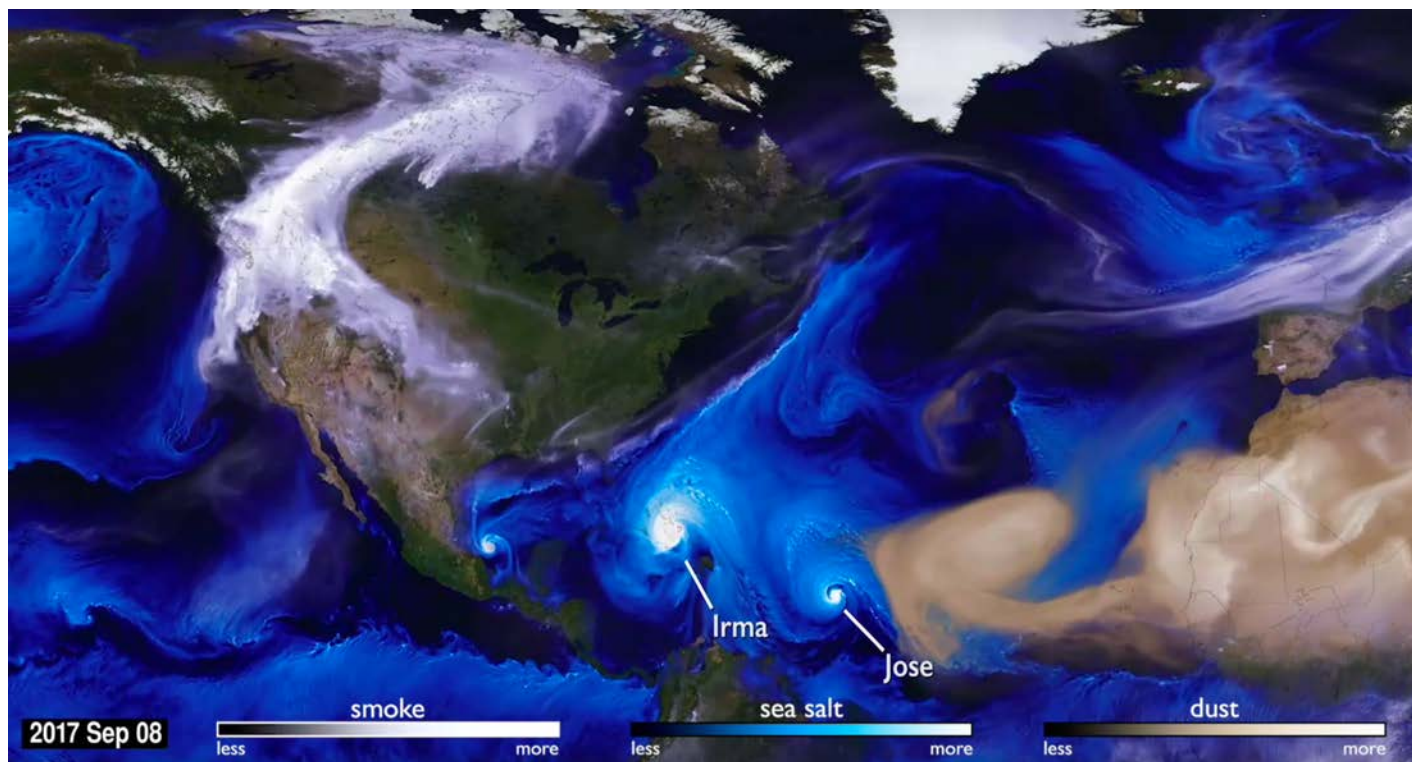




Summer 2017: Signals of Weather Extrema Shown in the Aerosol Fields



Goddard Earth Observing System (GEOS) models, combined with data from NASA's Earth observing satellites, enhance our scientific understanding of specific chemical, physical, and biological processes. In this still image from September 8, 2017, hurricanes and tropical storms are obvious from the large amounts of sea salt particles caught up in their swirling winds. The dust blowing off the Sahara, however, gets caught by water droplets and is rained out of the storm system. Smoke from the massive fires in the Pacific Northwest region of North America are blown across the Atlantic to the UK and Europe.

The full visualization at svs.gsfc.nasa.gov/12772 is a result of combining NASA satellite data with sophisticated mathematical models that describe the underlying physical processes.