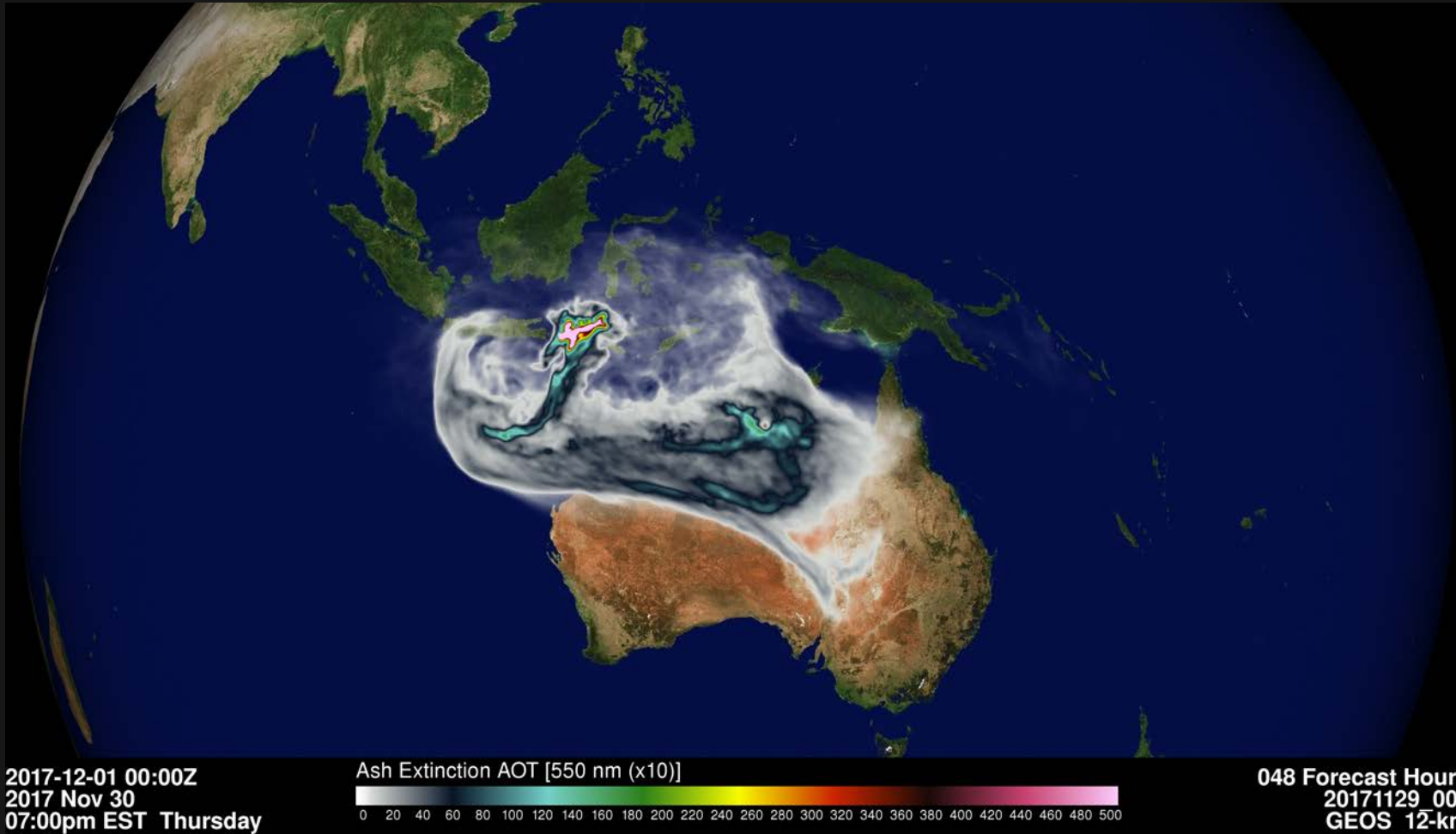


# Forecasting the Mt. Agung Ash Cloud Using GEOS



The Goddard Earth Observing System (GEOS) model combined with data from NASA's Earth observing satellites and best effort estimates of ash and sulfur dioxide emissions from the recent eruption of Mt Agung on the island of Bali, Indonesia. Data from Ozone Mapping and Profiling Suite (OMPS) Nadir-Mapper (NM) sensor on the Suomi-NPP satellite have been used for these estimates. This still image displays the forecast ash cloud from the recent eruption valid on December 1, 2017. Visualizations of the ash cloud, sulfur dioxide concentrations and sulfate aerosols beginning at the time of the eruption, through December 9, 2017 can be seen at:

[https://gmao.gsfc.nasa.gov/research/science\\_snapshots/2017/mt\\_agung\\_emissions.php](https://gmao.gsfc.nasa.gov/research/science_snapshots/2017/mt_agung_emissions.php)