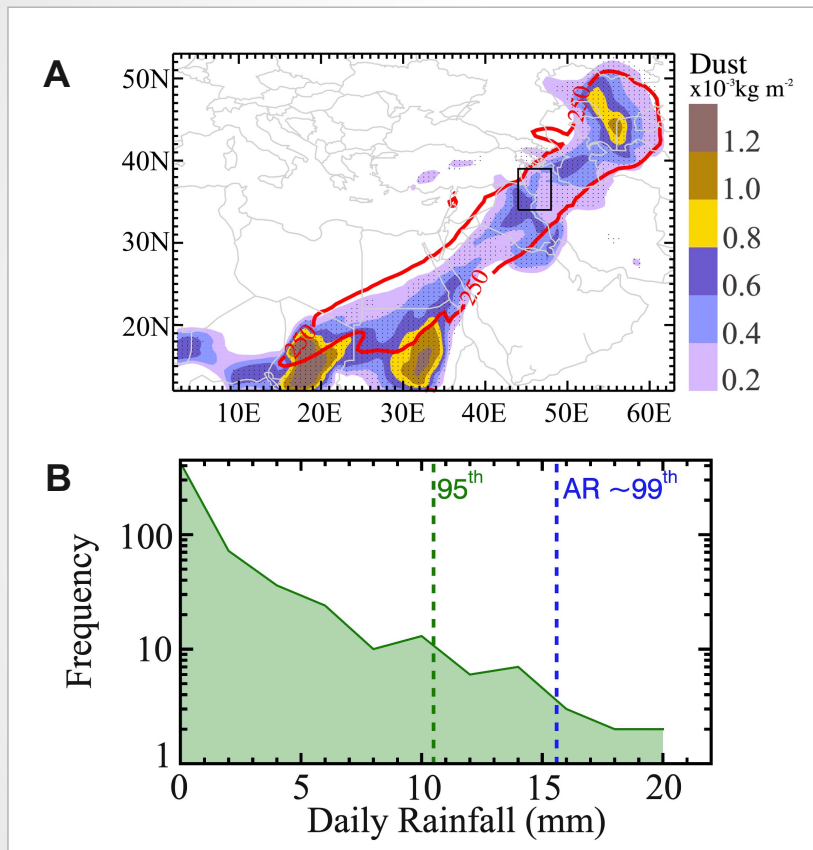
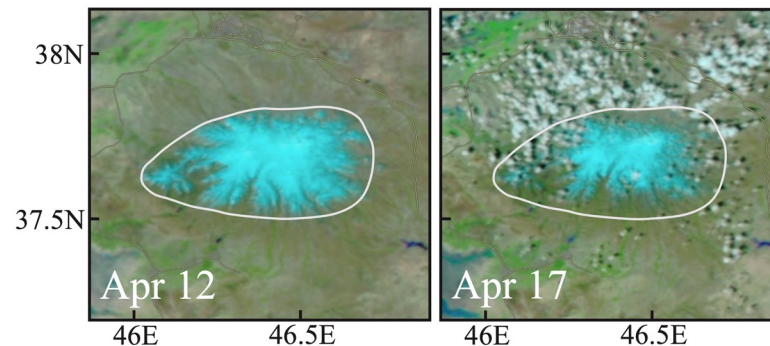


# A Dusty Atmospheric River Brings Floods to the Middle East



**C**

VIIRS Corrected Reflectance



- A:** Dust column mass density anomaly from MERRA-2 on April 14, 2017. Red line shows the atmospheric river extent detected by an IVT value of  $250 \text{ kg m}^{-1} \text{ s}^{-1}$ . Dotted area is where z-score of dust is greater than +1.28 ( $> 90^{\text{th}}$  percentile).
- B:** Histogram of daily rainfall in northwestern Iran, using IMERG data. Blue dashed line represents the rainfall for this event.
- C:** Area of thick ice and snow (vivid sky blue) before and after the event, using VIIRS images.