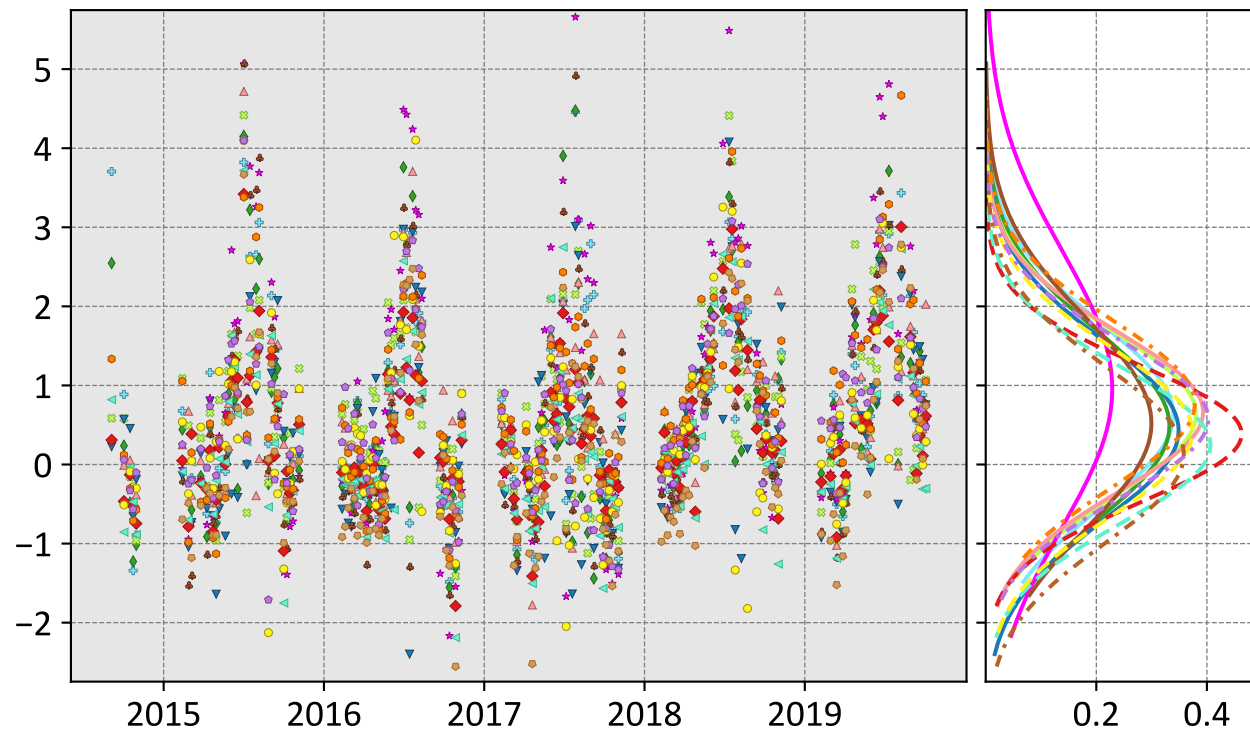


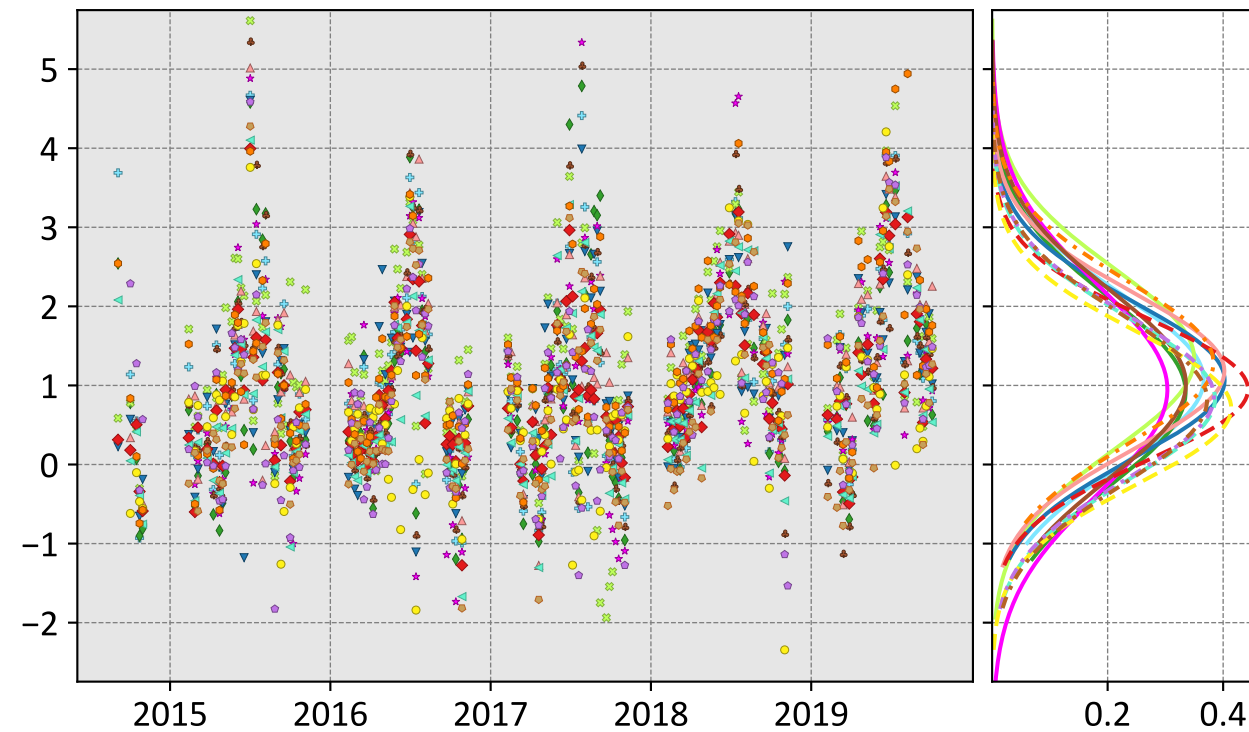
Rikubetsu, Hokkaido, Japan (7 day bins)

LNLGIS



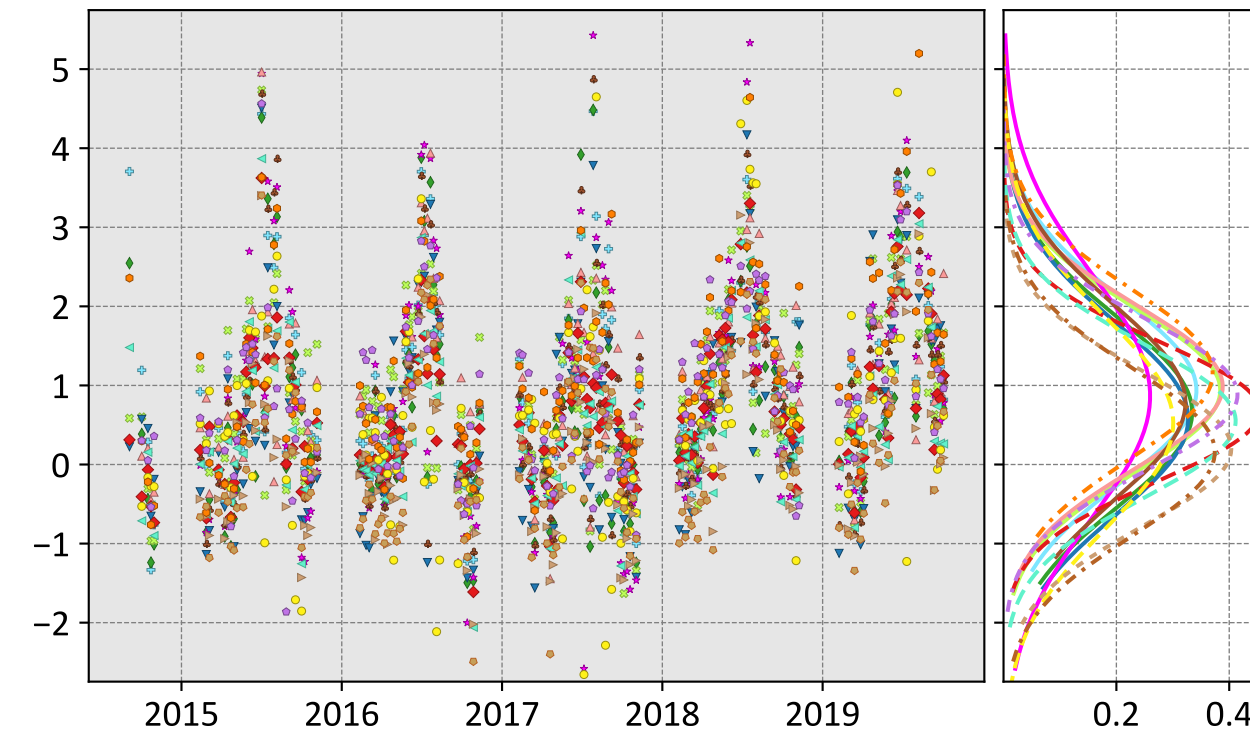
- CSU (0.62, 1.33, 0.12)
- Ames (0.49, 1.30, 0.15)
- COLA (0.64, 1.23, 0.10)
- UT (0.43, 1.22, 0.18)
- CMS-Flux (0.95, 1.99, 0.22)
- WOMBAT (0.66, 1.21, 0.16)
- JHU (0.52, 1.43, 0.15)
- TM5-4DVAR (0.39, 0.94, 0.15)
- OU (0.24, 1.01, 0.11)
- NIES (0.13, 1.12, 0.13)
- CT (0.41, 1.14, 0.07)
- CAMS (0.77, 1.31, 0.30)
- Baker (0.57, 1.15, 0.16)

OG



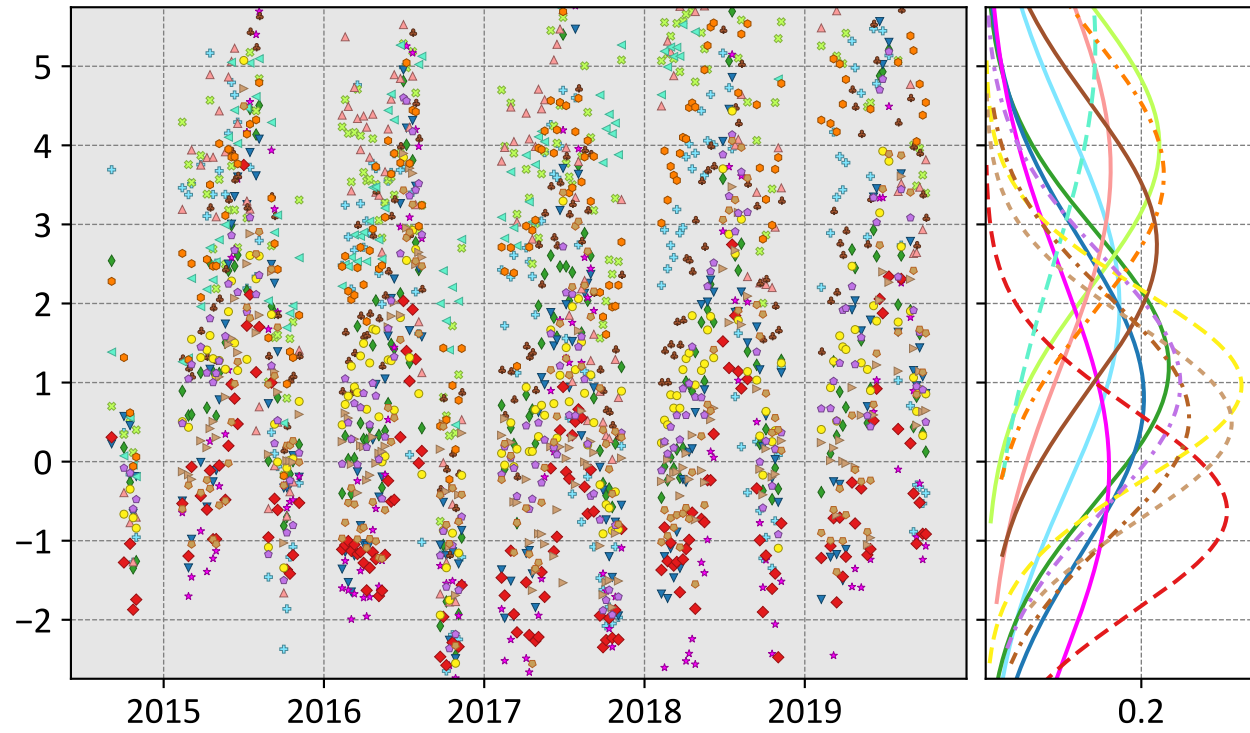
- CSU (1.07, 1.53, 0.12)
- Ames (0.92, 1.50, 0.14)
- COLA (1.33, 1.76, 0.13)
- UT (1.07, 1.46, 0.22)
- CMS-Flux (0.95, 1.62, 0.16)
- WOMBAT (1.18, 1.54, 0.19)
- JHU (1.02, 1.56, 0.08)
- TM5-4DVAR (0.95, 1.31, 0.19)
- OU (0.83, 1.33, 0.18)
- NIES (0.82, 1.35, 0.15)
- CT (0.71, 1.20, 0.15)
- CAMS (1.29, 1.66, 0.30)
- Baker (0.86, 1.35, 0.20)

LNLGGIS



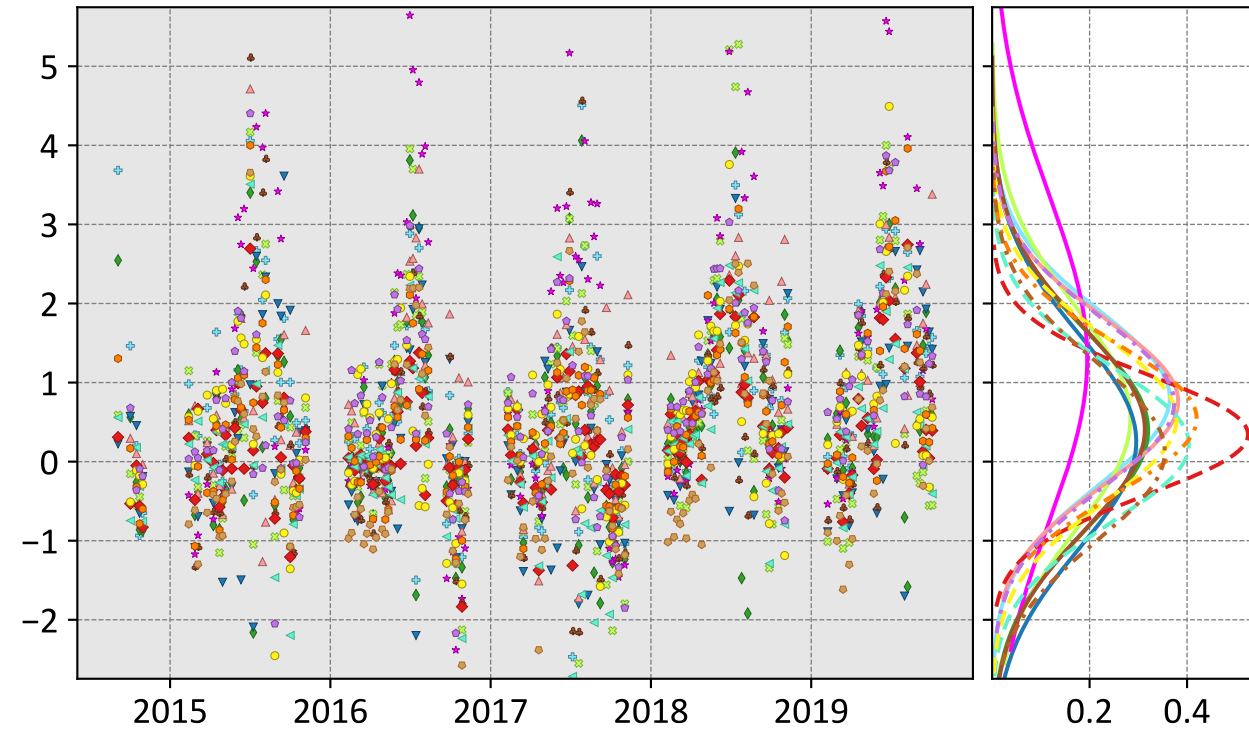
- CSU (0.94, 1.50, 0.14)
- Ames (0.66, 1.36, 0.15)
- COLA (0.94, 1.40, 0.13)
- UT (0.58, 1.35, 0.22)
- CMS-Flux (0.87, 1.76, 0.17)
- WOMBAT (0.99, 1.42, 0.19)
- JHU (0.78, 1.46, 0.16)
- TM5-4DVAR (0.67, 1.11, 0.19)
- OU (0.55, 1.12, 0.15)
- NIES (0.16, 1.08, 0.15)
- Weir (0.20, 1.01, 0.16)
- CAMS (1.15, 1.58, 0.30)
- Baker (0.88, 1.31, 0.19)
- CT (0.53, 1.43, 0.24)

prior



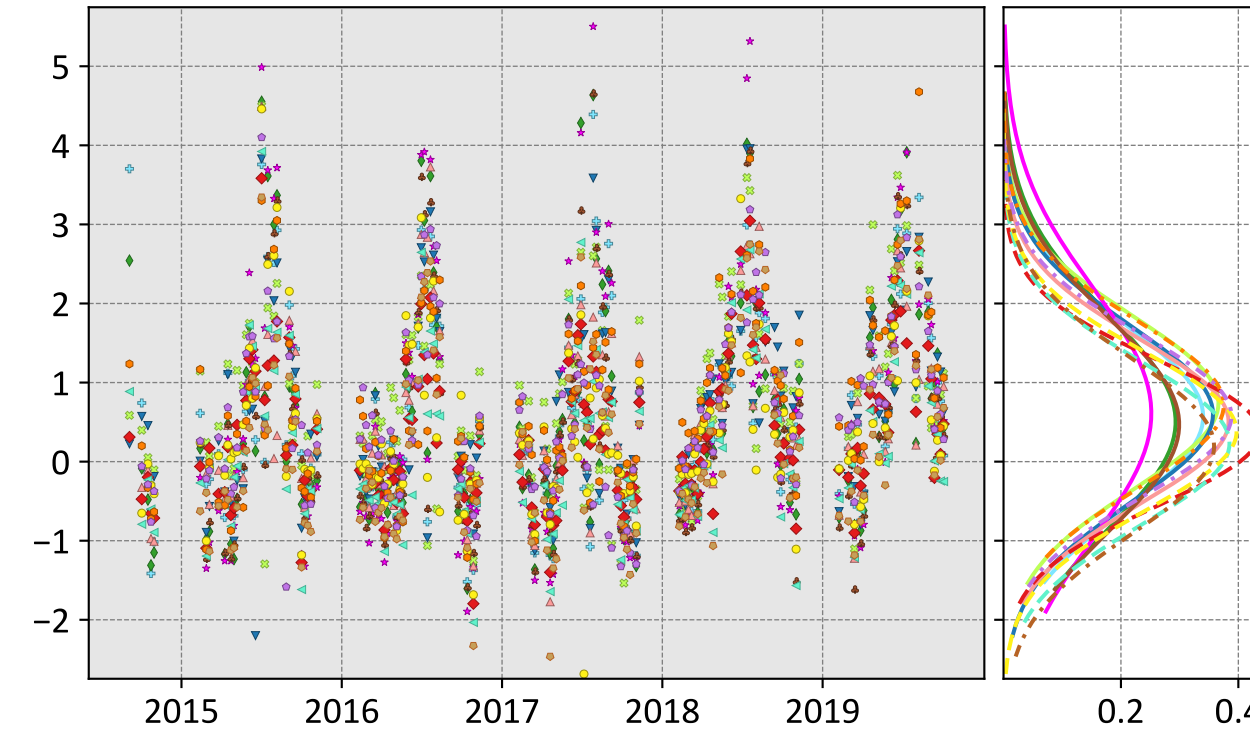
- CSU (1.97, 3.05, 0.07)
- Ames (1.20, 2.08, 0.12)
- COLA (3.99, 4.38, 0.73)
- UT (0.80, 2.12, 0.13)
- CMS-Flux (-0.10, 2.52, -0.41)
- WOMBAT (3.70, 4.46, 0.79)
- JHU (2.73, 3.28, 0.38)
- TM5-4DVAR (-0.62, 1.43, 0.03)
- OU (5.27, 5.99, 1.61)
- NIES (0.56, 1.63, 0.20)
- Weir (0.49, 1.35, -0.07)
- CAMS (3.63, 4.02, 0.76)
- Baker (0.99, 1.88, 0.18)
- CT (0.96, 1.55, 0.15)

IS



- CSU (0.81, 1.36, 0.14)
- Ames (0.40, 1.31, 0.13)
- COLA (0.55, 1.51, 0.12)
- UT (0.26, 1.37, 0.13)
- CMS-Flux (1.30, 2.42, 0.24)
- WOMBAT (0.76, 1.29, 0.22)
- JHU (0.41, 1.34, 0.09)
- TM5-4DVAR (0.34, 0.83, 0.16)
- OU (0.22, 1.01, 0.10)
- NIES (0.13, 1.13, 0.16)
- CT (0.54, 1.18, 0.16)
- CAMS (0.54, 1.10, 0.23)
- Baker (0.74, 1.30, 0.20)

LNLG



- CSU (0.57, 1.30, 0.12)
- Ames (0.50, 1.45, 0.15)
- COLA (0.74, 1.32, 0.14)
- UT (0.60, 1.27, 0.21)
- CMS-Flux (0.61, 1.70, 0.16)
- WOMBAT (0.51, 1.16, 0.13)
- JHU (0.47, 1.41, 0.13)
- TM5-4DVAR (0.36, 0.98, 0.15)
- OU (0.23, 1.06, 0.12)
- NIES (0.19, 1.13, 0.19)
- CT (0.38, 1.07, 0.06)
- CAMS (0.72, 1.28, 0.30)
- Baker (0.58, 1.18, 0.16)

Model - TCCON XCO₂ (ppm)