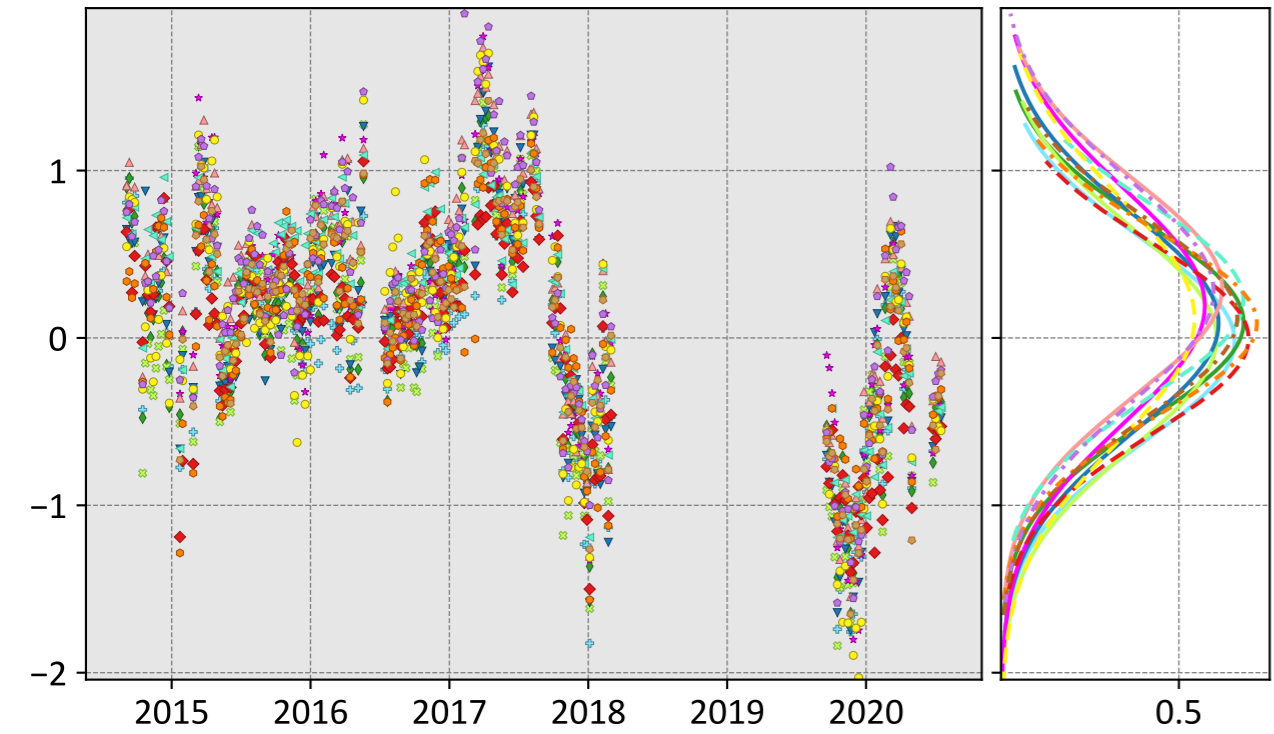


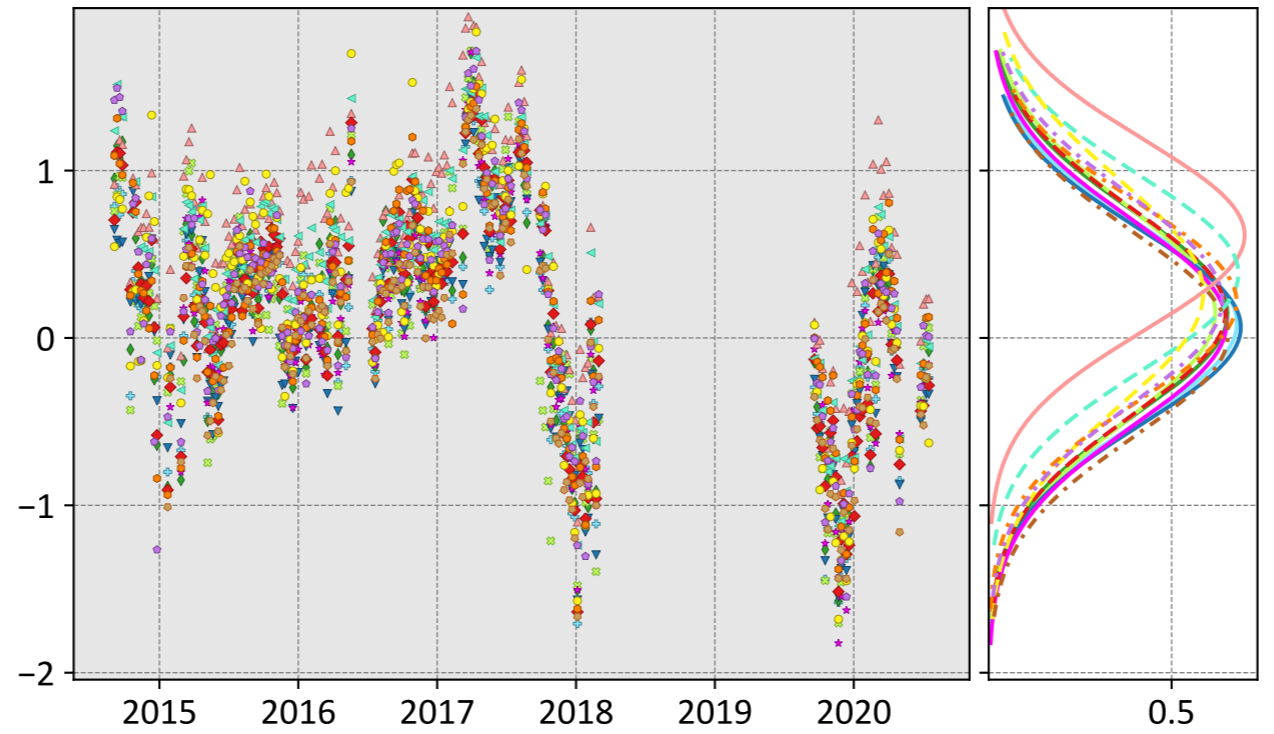
# Île de La Réunion, France (7 day bins)

## LNLGIS



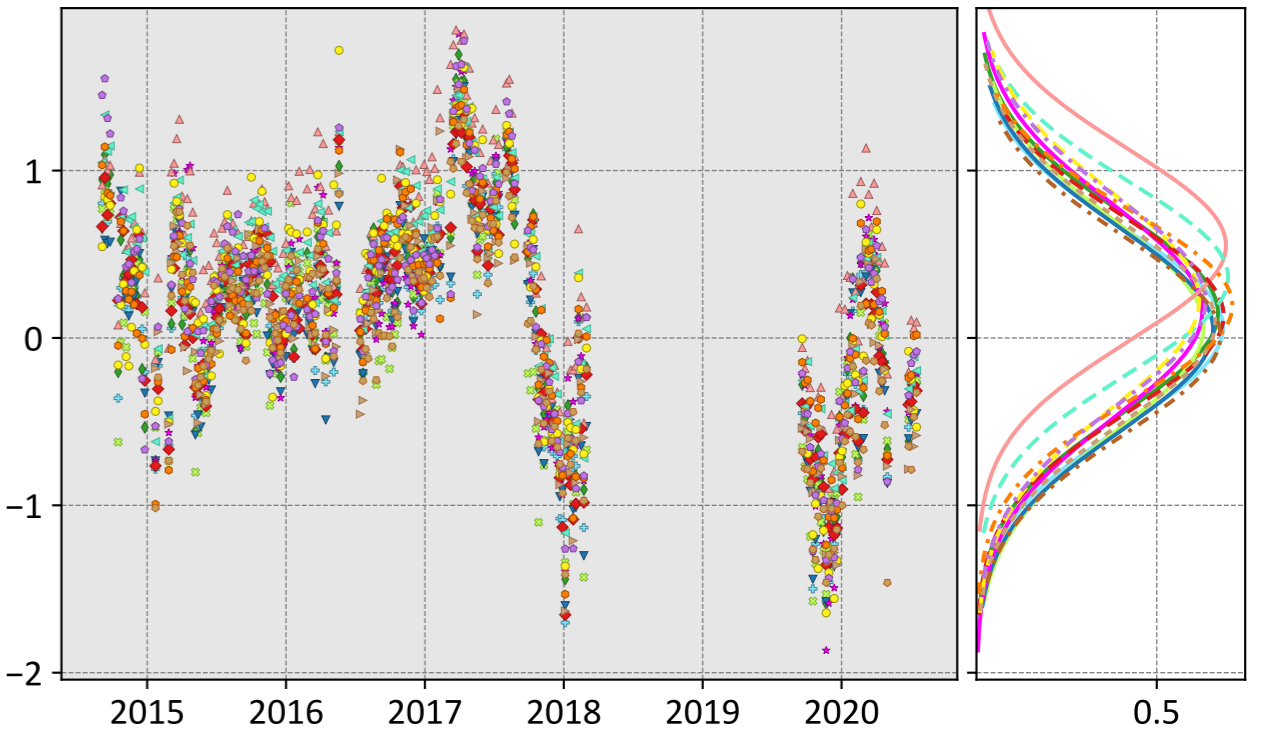
- CSU (0.02, 0.61, -0.18)
- Ames (0.09, 0.59, -0.17)
- COLA (-0.00, 0.66, -0.18)
- UT (0.09, 0.66, -0.18)
- CMS-Flux (0.19, 0.72, -0.23)
- WOMBAT (0.30, 0.71, -0.18)
- TM5-4DVAR (-0.00, 0.57, -0.20)
- OU (0.22, 0.63, -0.21)
- NIES (0.12, 0.61, -0.20)
- CT (0.12, 0.74, -0.21)
- CAMS (0.09, 0.56, -0.14)
- Baker (0.27, 0.72, -0.18)

## OG



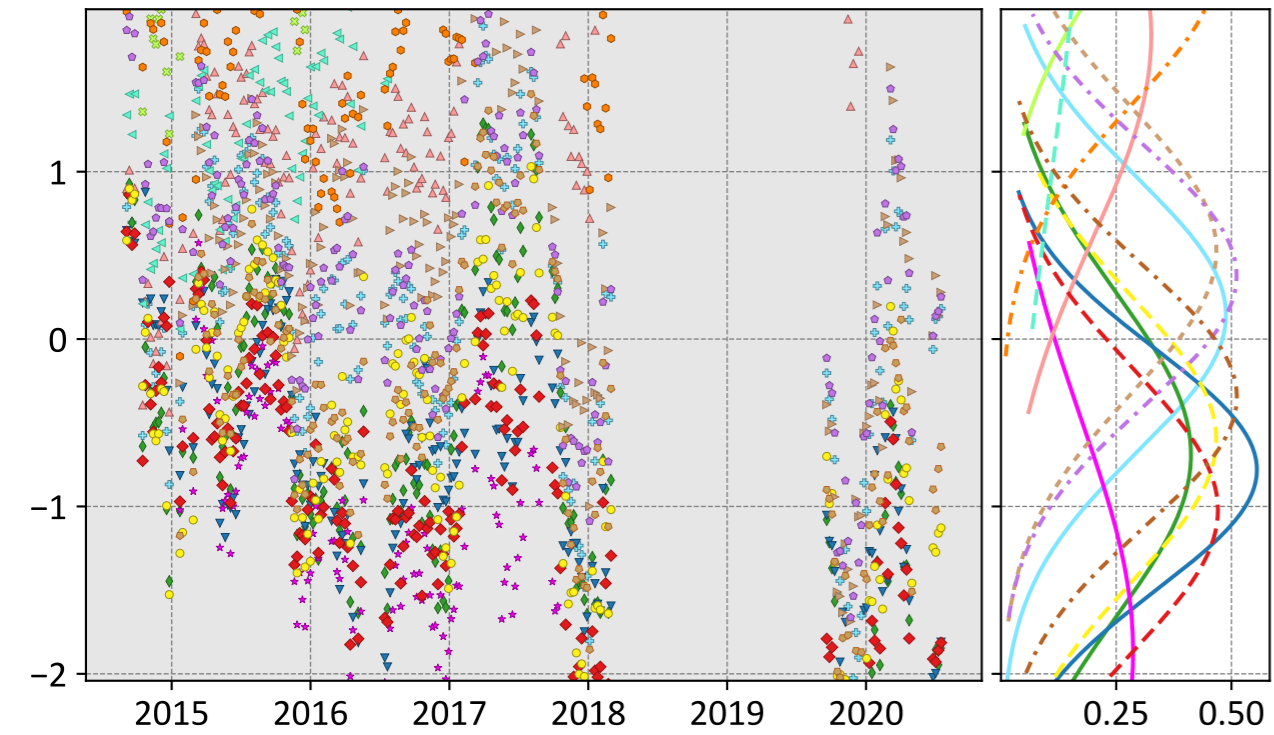
- CSU (0.09, 0.59, -0.14)
- Ames (0.15, 0.63, -0.14)
- COLA (0.15, 0.66, -0.14)
- UT (0.06, 0.58, -0.13)
- CMS-Flux (0.09, 0.62, -0.15)
- WOMBAT (0.61, 0.84, -0.12)
- TM5-4DVAR (0.15, 0.63, -0.16)
- OU (0.38, 0.70, -0.16)
- NIES (0.02, 0.61, -0.14)
- CT (0.27, 0.73, -0.18)
- CAMS (0.21, 0.63, -0.10)
- Baker (0.22, 0.66, -0.13)

## LNLGOGIS



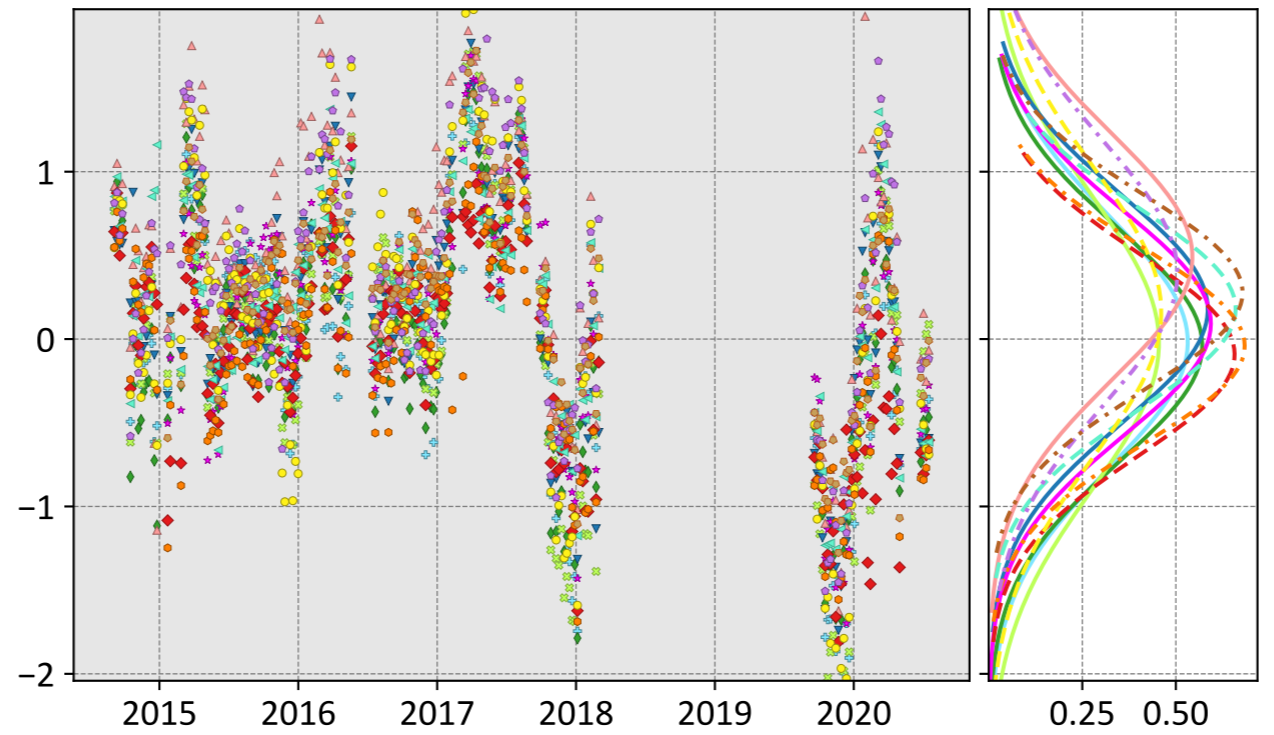
- CSU (0.06, 0.59, -0.15)
- Ames (0.15, 0.61, -0.13)
- COLA (0.07, 0.64, -0.15)
- UT (0.05, 0.61, -0.15)
- CMS-Flux (0.16, 0.66, -0.16)
- WOMBAT (0.55, 0.80, -0.13)
- TM5-4DVAR (0.13, 0.60, -0.15)
- OU (0.36, 0.68, -0.17)
- CT (0.23, 0.68, -0.16)
- Weir (0.09, 0.61, -0.16)
- CAMS (0.19, 0.59, -0.11)
- Baker (0.22, 0.66, -0.15)
- NIES (0.01, 0.59, -0.20)

## prior



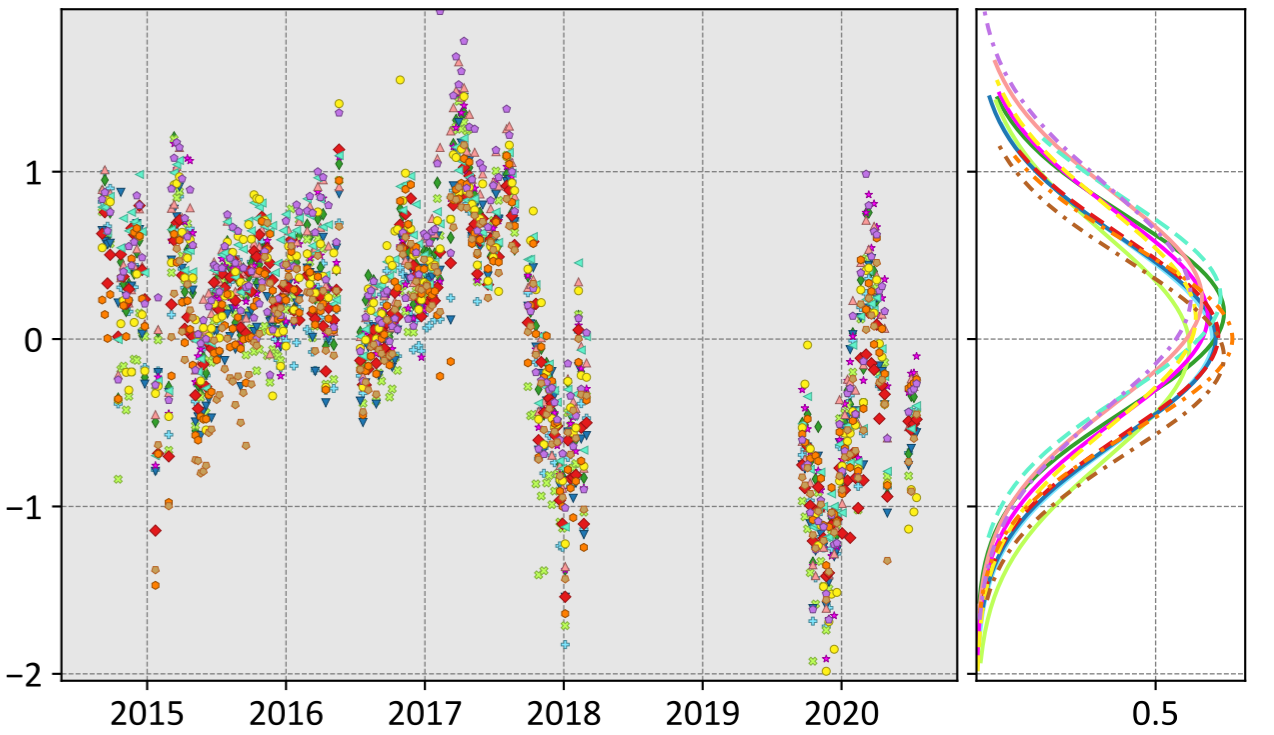
- CSU (0.14, 0.83, -0.17)
- Ames (-0.69, 1.19, -0.32)
- COLA (3.25, 3.40, 0.35)
- UT (-0.78, 1.06, -0.26)
- CMS-Flux (-1.87, 2.33, -0.75)
- WOMBAT (1.82, 2.19, 0.54)
- TM5-4DVAR (-1.02, 1.33, -0.34)
- OU (3.18, 3.90, 1.27)
- CT (-0.60, 1.04, -0.25)
- Weir (0.53, 1.00, -0.20)
- CAMS (2.25, 2.41, 0.32)
- Baker (0.38, 0.87, -0.20)
- NIES (-0.35, 0.85, -0.19)

## IS



- CSU (-0.02, 0.75, -0.19)
- Ames (-0.04, 0.70, -0.14)
- COLA (-0.02, 0.88, -0.21)
- UT (0.18, 0.70, -0.15)
- CMS-Flux (0.09, 0.68, -0.16)
- WOMBAT (0.49, 0.88, -0.15)
- TM5-4DVAR (-0.09, 0.61, -0.20)
- OU (0.18, 0.63, -0.13)
- NIES (0.28, 0.65, -0.15)
- CT (0.16, 0.88, -0.18)
- CAMS (-0.04, 0.58, -0.14)
- Baker (0.39, 0.88, -0.12)

## LNLG



- CSU (-0.00, 0.61, -0.18)
- Ames (0.16, 0.60, -0.17)
- COLA (-0.05, 0.67, -0.17)
- UT (0.01, 0.60, -0.17)
- CMS-Flux (0.14, 0.63, -0.17)
- WOMBAT (0.24, 0.68, -0.18)
- TM5-4DVAR (0.02, 0.59, -0.21)
- OU (0.25, 0.64, -0.22)
- CT (0.13, 0.66, -0.20)
- CAMS (0.00, 0.56, -0.12)
- Baker (0.25, 0.71, -0.19)
- NIES (-0.11, 0.59, -0.14)

Model - TCCON XCO<sub>2</sub> (ppm)