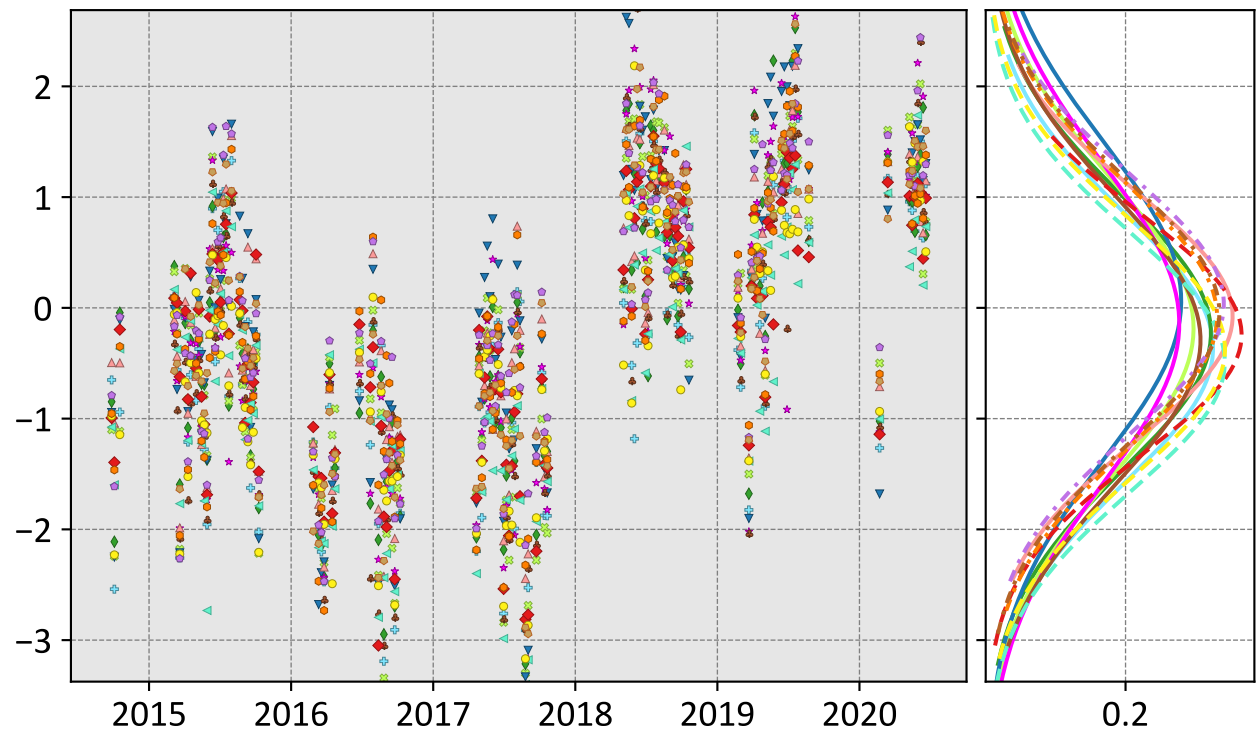


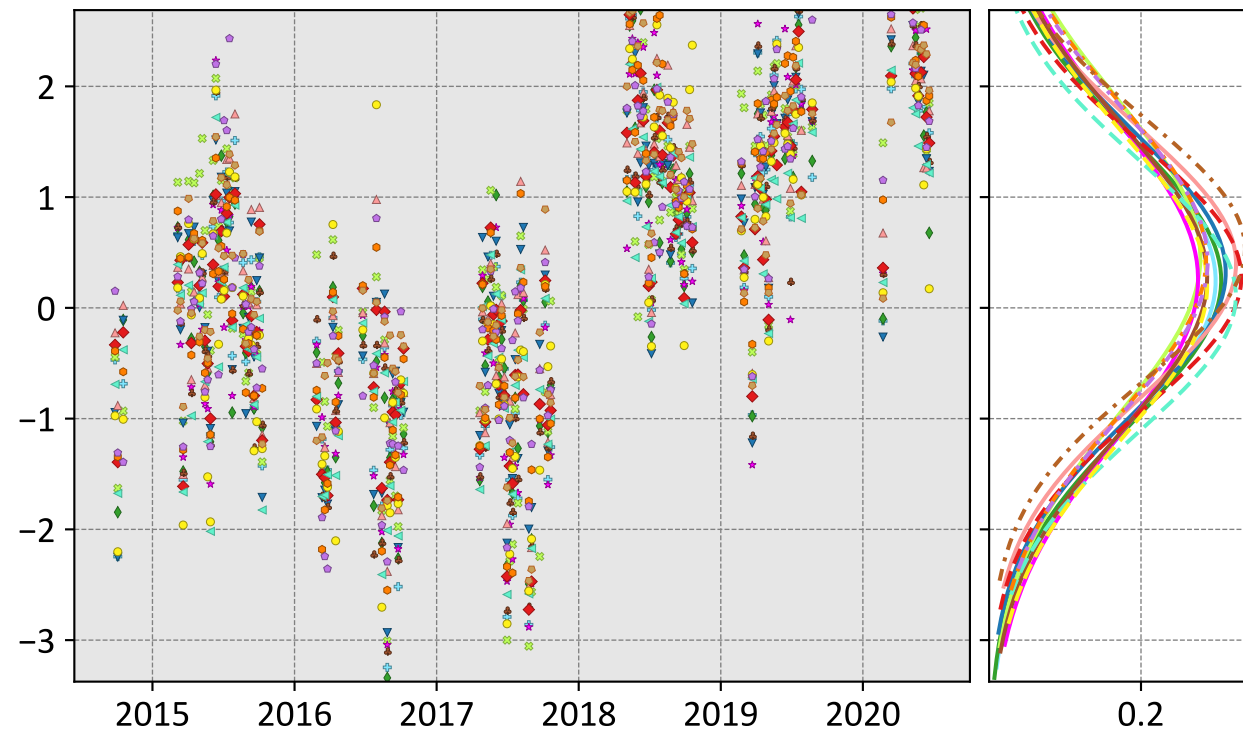
Paris, Île de France, France (7 day bins)

LNLGIS



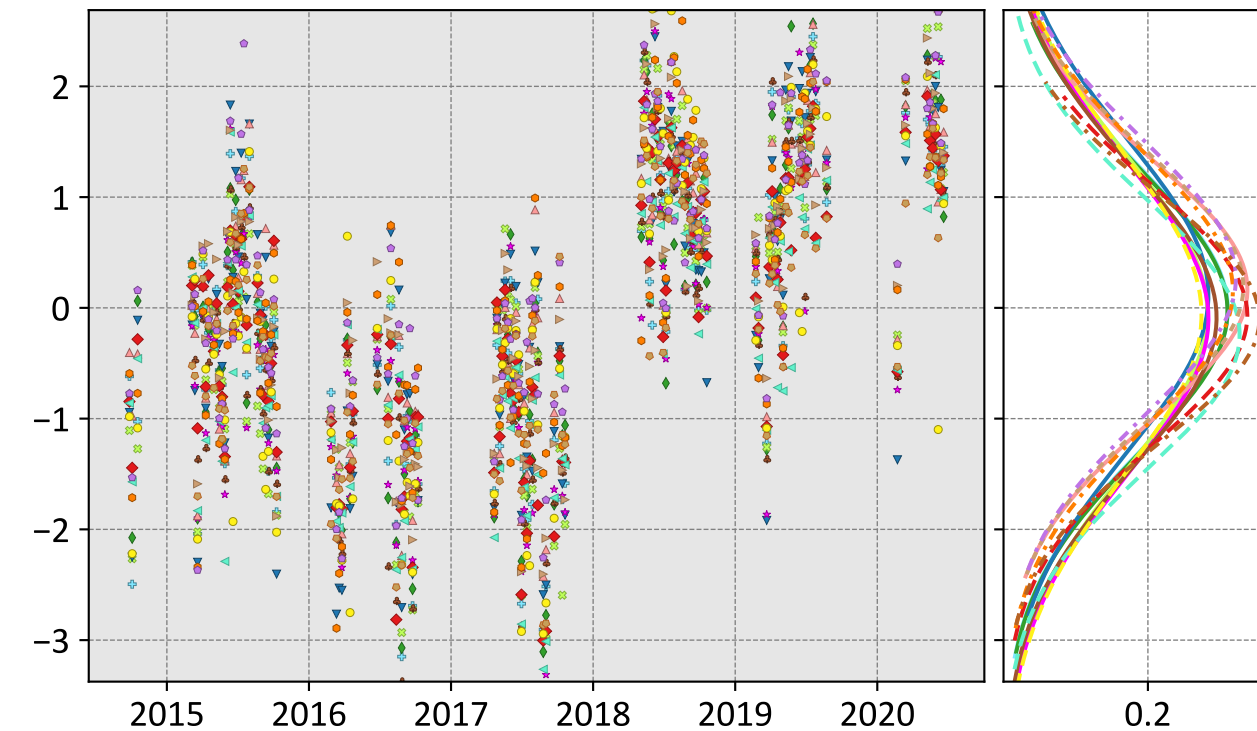
CSU (-0.36, 1.28, 0.37) WOMBAT (-0.07, 1.13, 0.37) CT (-0.37, 1.22, 0.40)
 Ames (-0.23, 1.26, 0.40) JHU (-0.29, 1.33, 0.44) CAMS (-0.08, 1.21, 0.42)
 COLA (-0.18, 1.35, 0.44) TM5-4DVAR (-0.24, 1.12, 0.31) Baker (0.03, 1.17, 0.41)
 UT (0.06, 1.43, 0.43) OU (-0.49, 1.27, 0.34) NIES (-0.04, 1.19, 0.38)
 CMS-Flux (-0.14, 1.45, 0.52)

OG



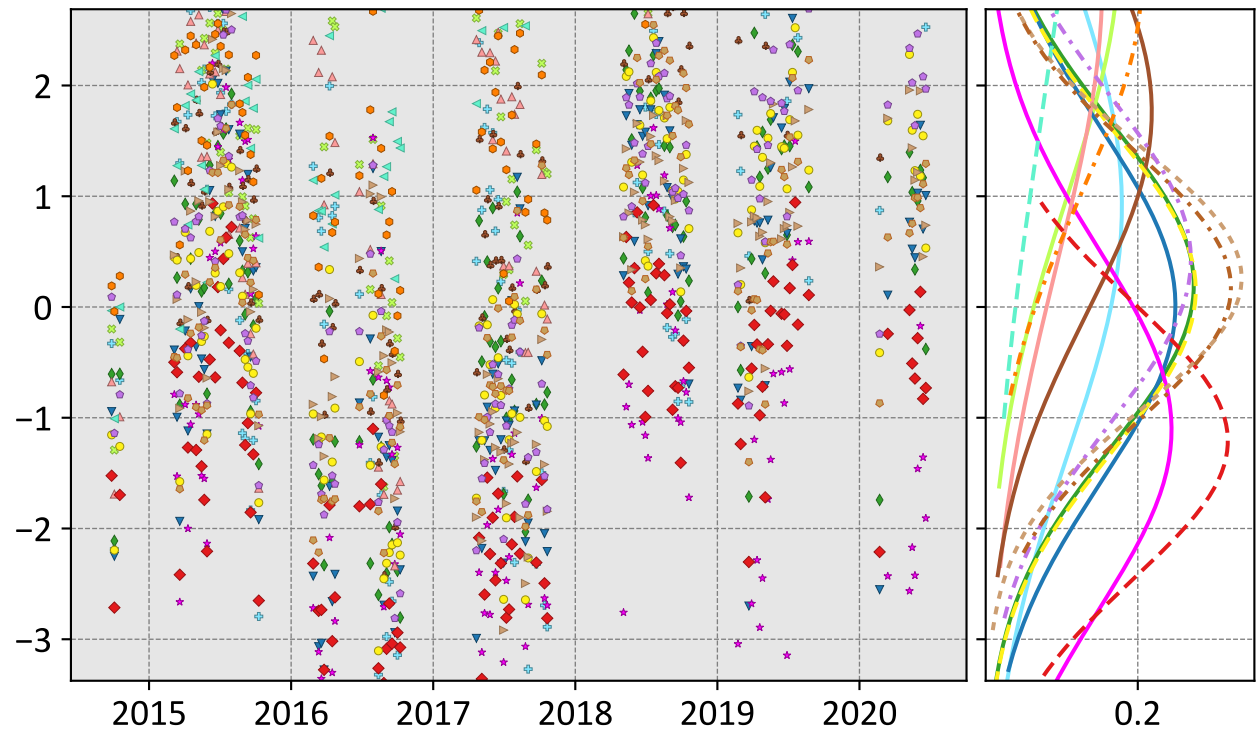
CSU (0.24, 1.36, 0.44) WOMBAT (0.40, 1.29, 0.44) CT (0.20, 1.40, 0.47)
 Ames (0.25, 1.33, 0.44) JHU (0.27, 1.42, 0.49) CAMS (0.44, 1.46, 0.54)
 COLA (0.45, 1.50, 0.45) TM5-4DVAR (0.28, 1.23, 0.42) Baker (0.42, 1.45, 0.50)
 UT (0.32, 1.32, 0.45) OU (0.11, 1.23, 0.45) NIES (0.53, 1.30, 0.40)
 CMS-Flux (0.26, 1.47, 0.52)

LNLGOGIS



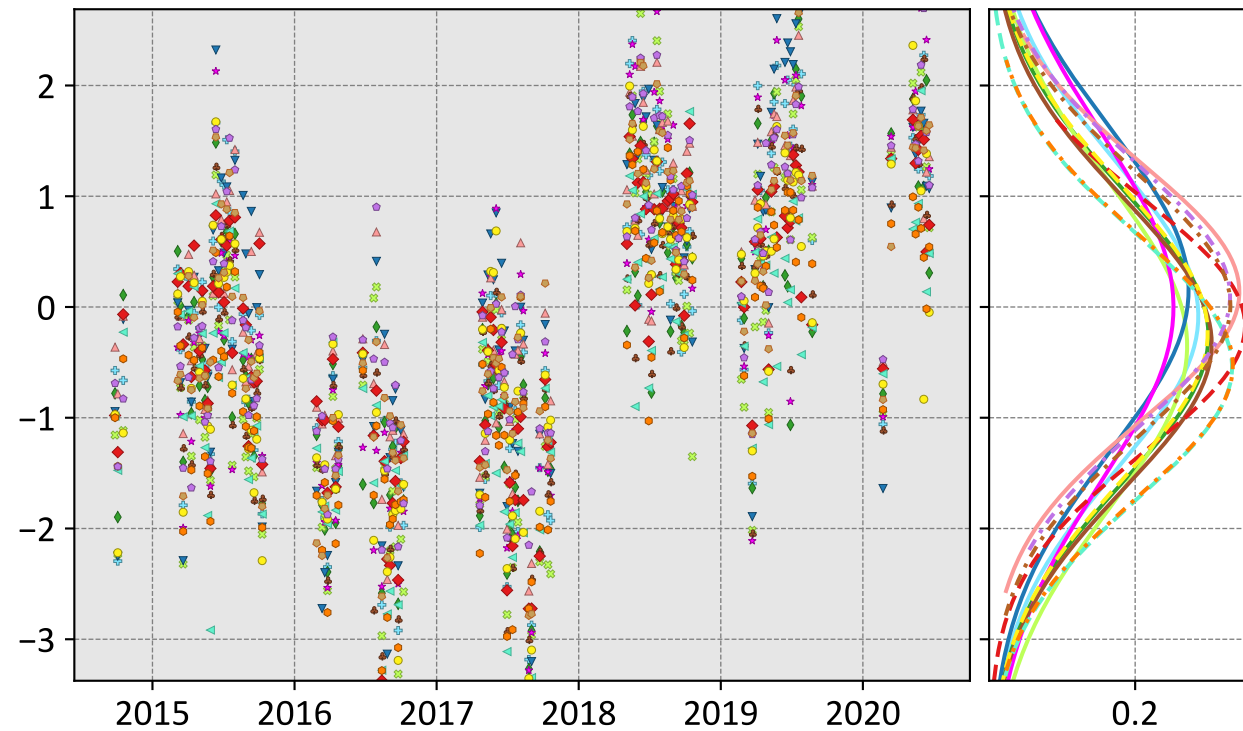
CSU (-0.01, 1.28, 0.42) WOMBAT (0.16, 1.19, 0.41) Weir (0.19, 1.22, 0.42)
 Ames (-0.03, 1.29, 0.44) JHU (-0.09, 1.35, 0.49) CAMS (0.16, 1.27, 0.47)
 COLA (-0.04, 1.41, 0.51) TM5-4DVAR (-0.07, 1.18, 0.37) Baker (0.27, 1.27, 0.45)
 UT (0.11, 1.41, 0.44) OU (-0.24, 1.24, 0.39) NIES (-0.10, 1.13, 0.37)
 CMS-Flux (-0.09, 1.41, 0.50) CT (-0.06, 1.46, 0.49)

prior



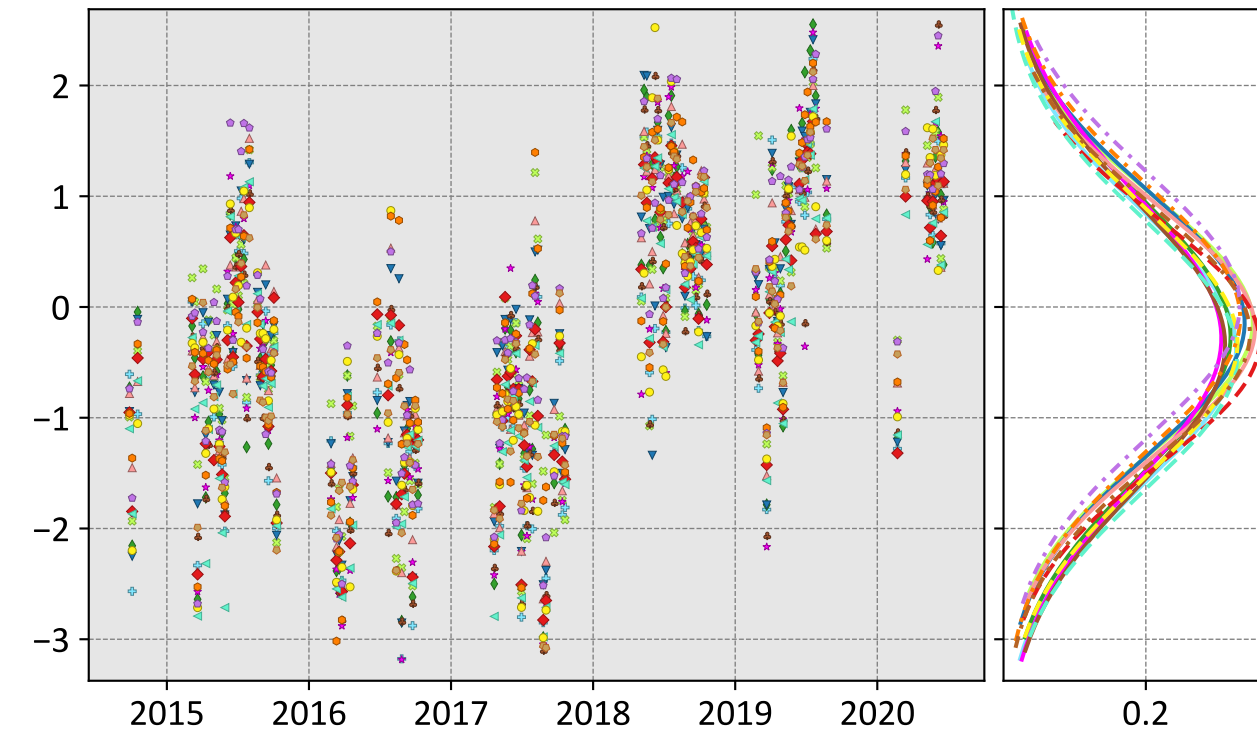
CSU (0.91, 2.41, 0.50) WOMBAT (2.97, 3.95, 1.21) Weir (0.26, 1.21, 0.18)
 Ames (0.20, 1.47, 0.33) JHU (1.76, 2.54, 0.73) CAMS (2.95, 3.53, 0.93)
 COLA (3.26, 3.98, 1.03) TM5-4DVAR (-1.21, 1.74, 0.25) Baker (0.43, 1.54, 0.42)
 UT (0.02, 1.60, 0.30) OU (5.00, 6.02, 1.88) NIES (0.17, 1.25, 0.33)
 CMS-Flux (-1.11, 1.97, -0.23) CT (0.15, 1.45, 0.46)

IS



CSU (-0.08, 1.39, 0.42) WOMBAT (0.14, 1.17, 0.39) CT (-0.23, 1.35, 0.40)
 Ames (-0.26, 1.35, 0.41) JHU (-0.33, 1.35, 0.43) CAMS (-0.53, 1.31, 0.39)
 COLA (-0.35, 1.51, 0.50) TM5-4DVAR (-0.17, 1.15, 0.33) Baker (0.10, 1.21, 0.45)
 UT (0.15, 1.47, 0.44) OU (-0.54, 1.32, 0.35) NIES (0.01, 1.21, 0.41)
 CMS-Flux (-0.00, 1.58, 0.57)

LNLG



CSU (-0.37, 1.28, 0.38) WOMBAT (-0.20, 1.15, 0.38) CT (-0.32, 1.26, 0.39)
 Ames (-0.27, 1.28, 0.43) JHU (-0.34, 1.33, 0.44) CAMS (-0.10, 1.20, 0.42)
 COLA (-0.15, 1.15, 0.38) TM5-4DVAR (-0.32, 1.15, 0.37) Baker (0.02, 1.20, 0.41)
 UT (-0.14, 1.19, 0.38) OU (-0.43, 1.29, 0.40) NIES (-0.24, 1.18, 0.45)
 CMS-Flux (-0.28, 1.33, 0.44)

Model - TCCON XCO₂ (ppm)