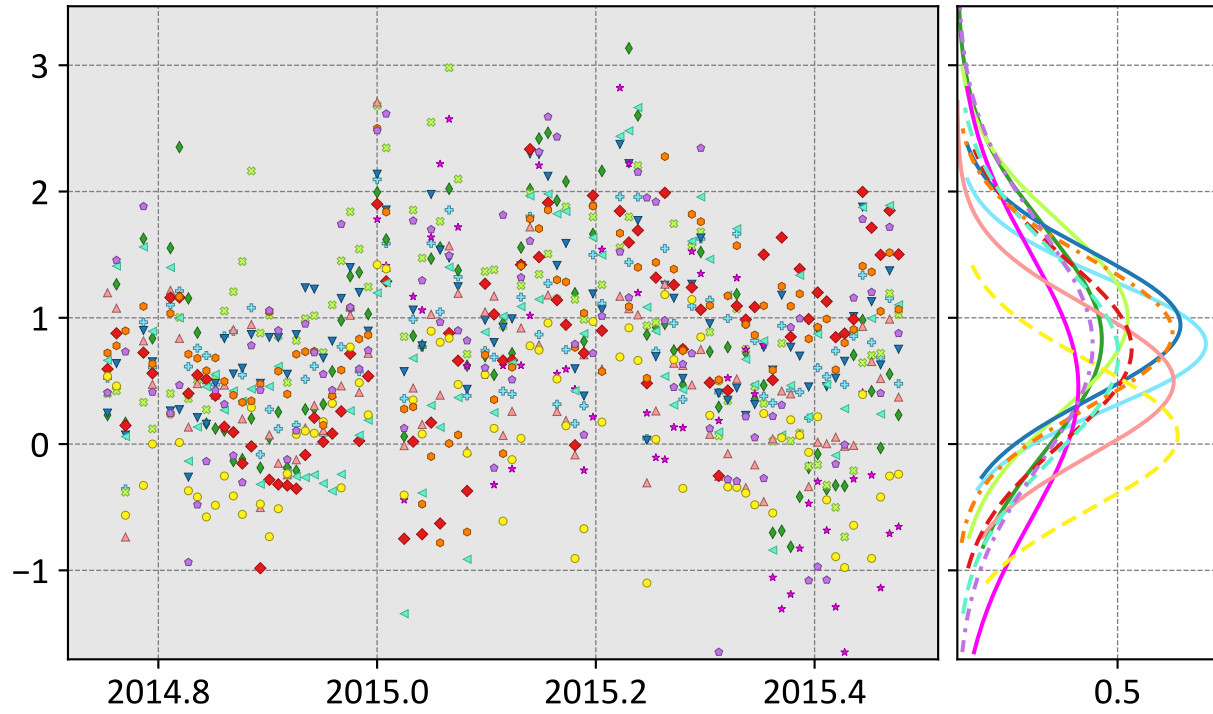


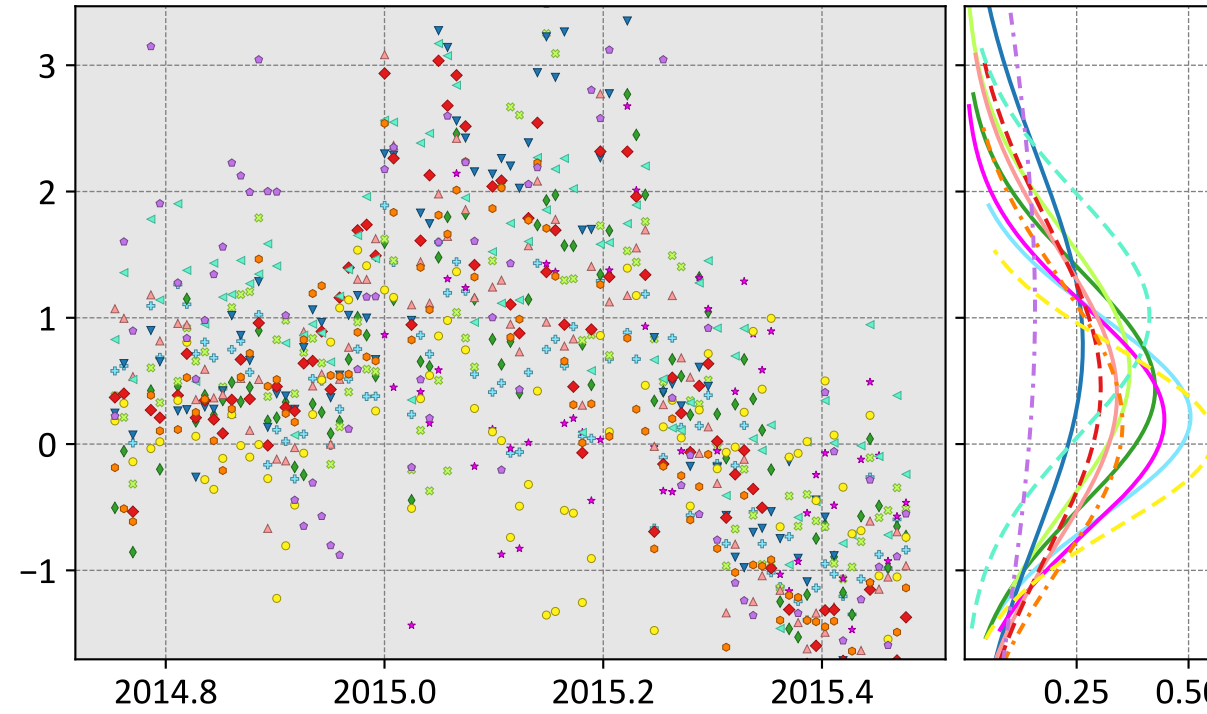
Manaus, Amazonas, Brazil (3 day bins)

prior



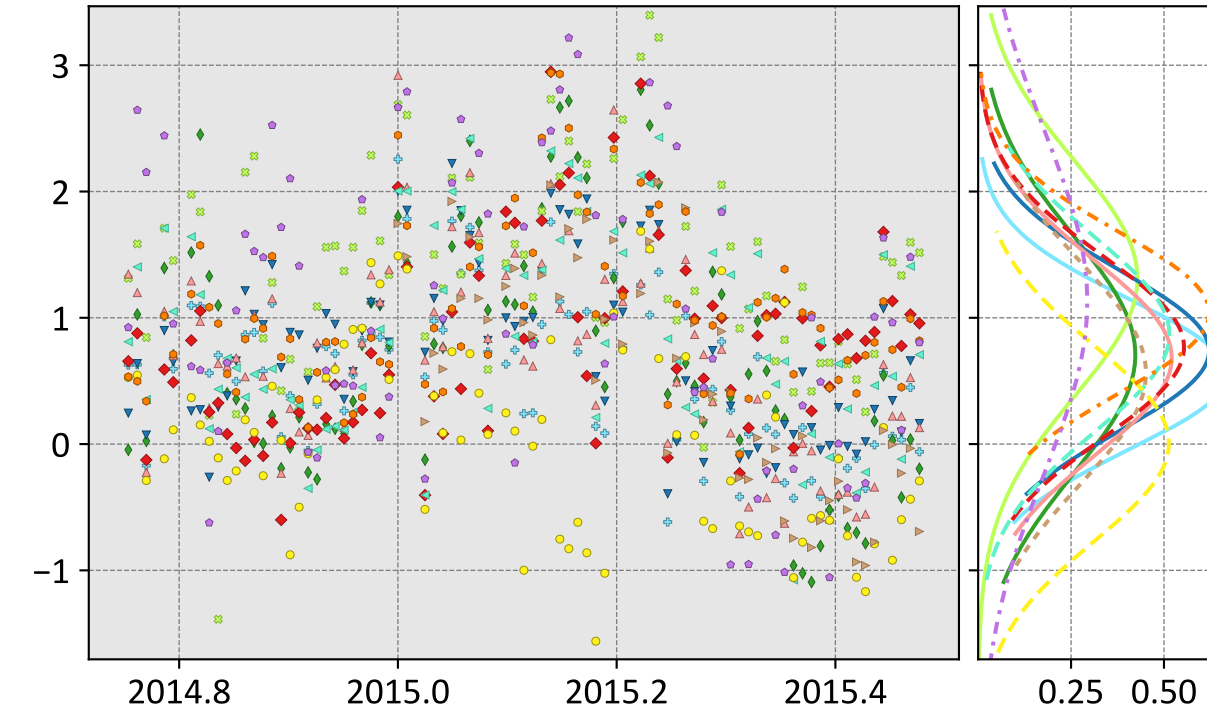
- CSU (0.79, 0.95, 0.38) CMS-Flux (0.45, 1.15, -4.68) CT (0.07, 0.58, -0.15)
- Ames (0.83, 1.21, -0.41) WOMBAT (0.49, 0.77, -0.38) CAMS (0.88, 1.06, 0.91)
- COLA (1.00, 1.25, -0.59) TM5-4DVAR (0.75, 1.05, 1.81) Baker (0.78, 1.23, -0.13)
- UT (0.94, 1.10, 0.45) OU (0.70, 1.06, 1.00)

IS



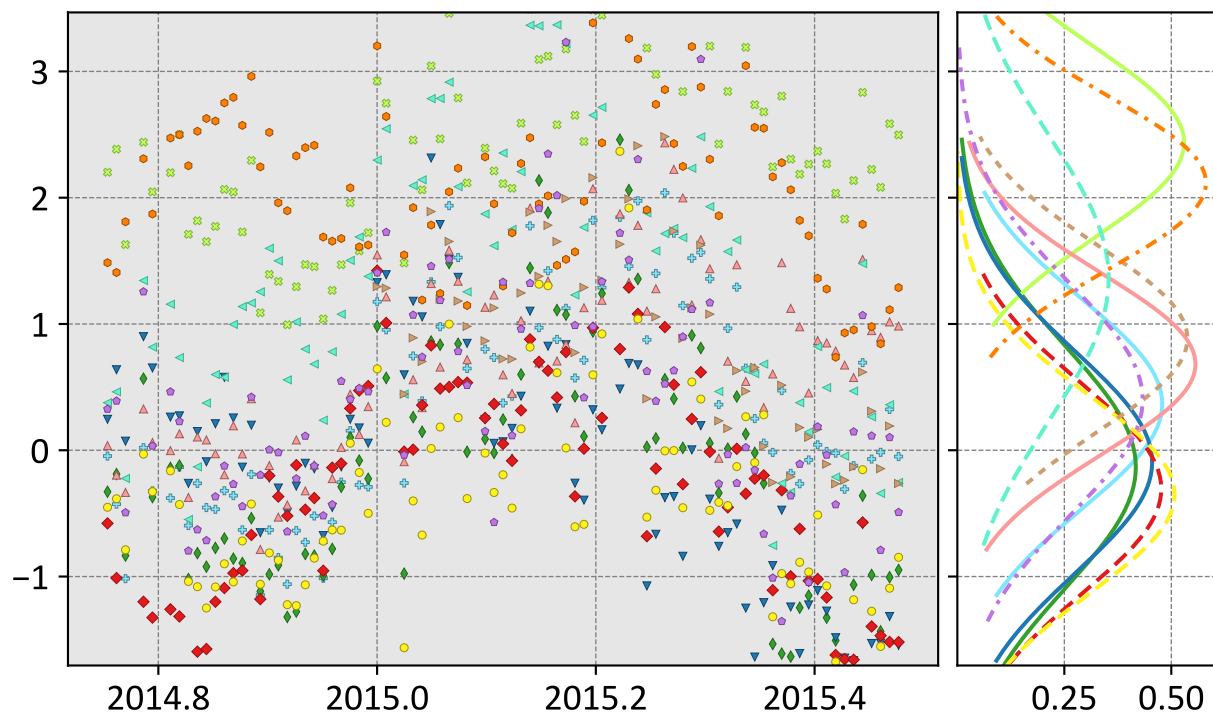
- CSU (0.22, 0.82, -2.44) CMS-Flux (0.20, 0.92, -2.11) CT (0.05, 0.72, -0.76)
- Ames (0.44, 1.03, -1.09) WOMBAT (0.39, 1.23, -3.03) CAMS (0.16, 1.14, -3.11)
- COLA (0.58, 1.23, -1.72) TM5-4DVAR (0.44, 1.39, -3.11) Baker (1.07, 2.76, -3.04)
- UT (0.78, 1.70, -2.56) OU (1.01, 1.40, -2.30)

LNLG

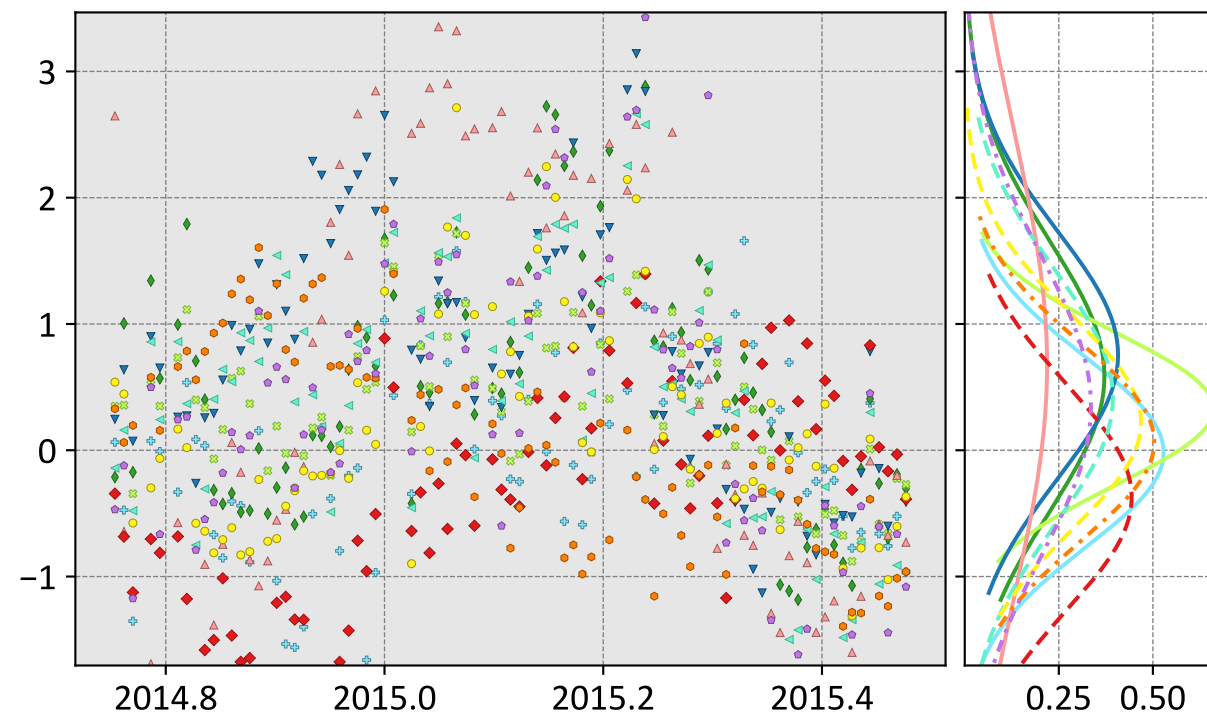


- CSU (0.55, 0.81, -1.22) WOMBAT (0.68, 1.03, -1.37) Weir (0.56, 1.05, -4.82)
- Ames (0.71, 1.18, -1.05) TM5-4DVAR (0.77, 1.05, 1.08) CAMS (1.04, 1.22, 0.19)
- COLA (1.31, 1.61, 0.14) OU (0.87, 1.16, -0.19) Baker (1.13, 1.77, -1.45)
- UT (0.74, 0.98, -0.82) CT (0.00, 0.78, -1.19)

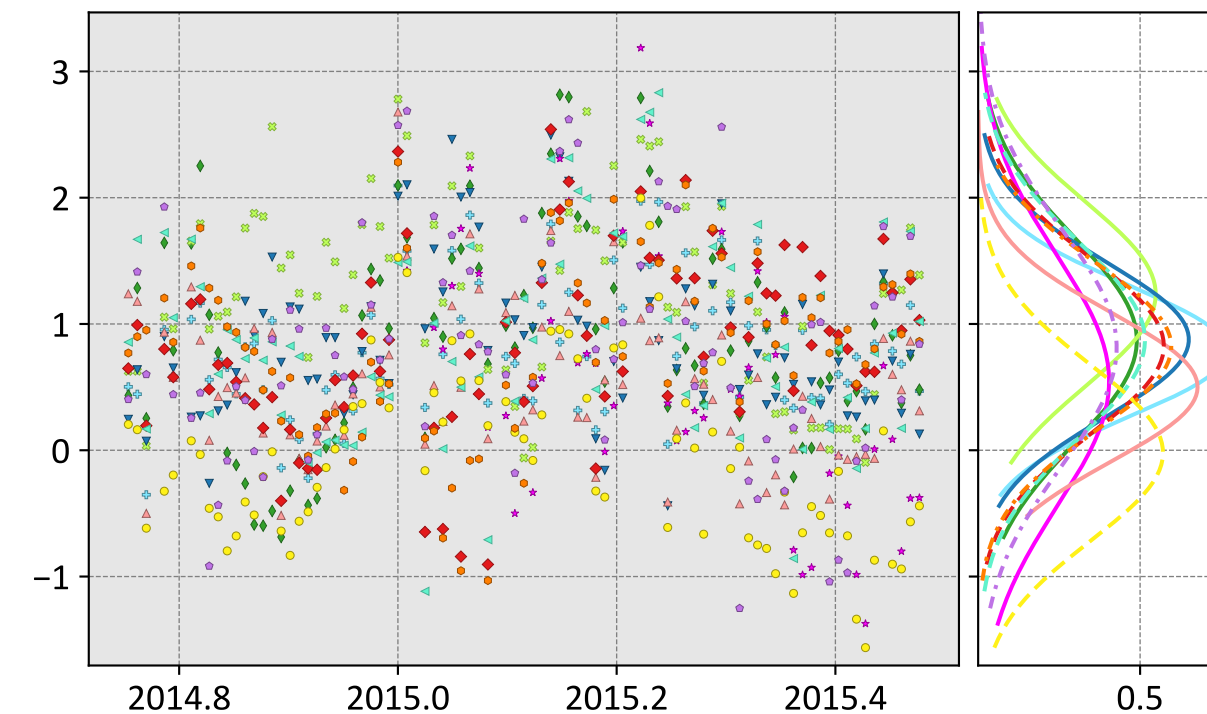
Model - TCCON XCO₂ (ppm)



- CSU (0.37, 0.91, 1.66) WOMBAT (0.68, 0.99, 2.04) Weir (0.88, 1.15, -3.20)
- Ames (-0.13, 0.97, -0.05) TM5-4DVAR (-0.31, 0.89, 0.20) CAMS (2.12, 2.23, -0.46)
- COLA (2.44, 2.55, 1.68) OU (1.36, 1.77, -0.04) Baker (0.40, 1.00, 0.09)
- UT (-0.10, 0.88, -2.40) CT (-0.35, 0.86, 0.14)



- CSU (-0.02, 0.76, 0.91) WOMBAT (0.68, 1.94, -0.75) CT (0.22, 0.88, 0.13)
- Ames (0.59, 1.22, -0.33) TM5-4DVAR (-0.37, 0.97, 2.80) CAMS (0.06, 0.79, -2.89)
- COLA (0.33, 0.69, -0.97) OU (0.42, 1.10, -1.76) Baker (0.35, 1.24, -0.90)
- UT (0.75, 1.24, -1.93)



- CSU (0.78, 0.94, 0.44) CMS-Flux (0.55, 1.13, -3.26) CT (-0.02, 0.70, -0.61)
- Ames (0.87, 1.19, 0.45) WOMBAT (0.50, 0.77, -0.63) CAMS (0.82, 1.06, 0.75)
- COLA (1.24, 1.44, -0.91) TM5-4DVAR (0.83, 1.08, 1.20) Baker (0.81, 1.24, -0.14)
- UT (0.88, 1.07, -0.17) OU (0.87, 1.17, 0.29)