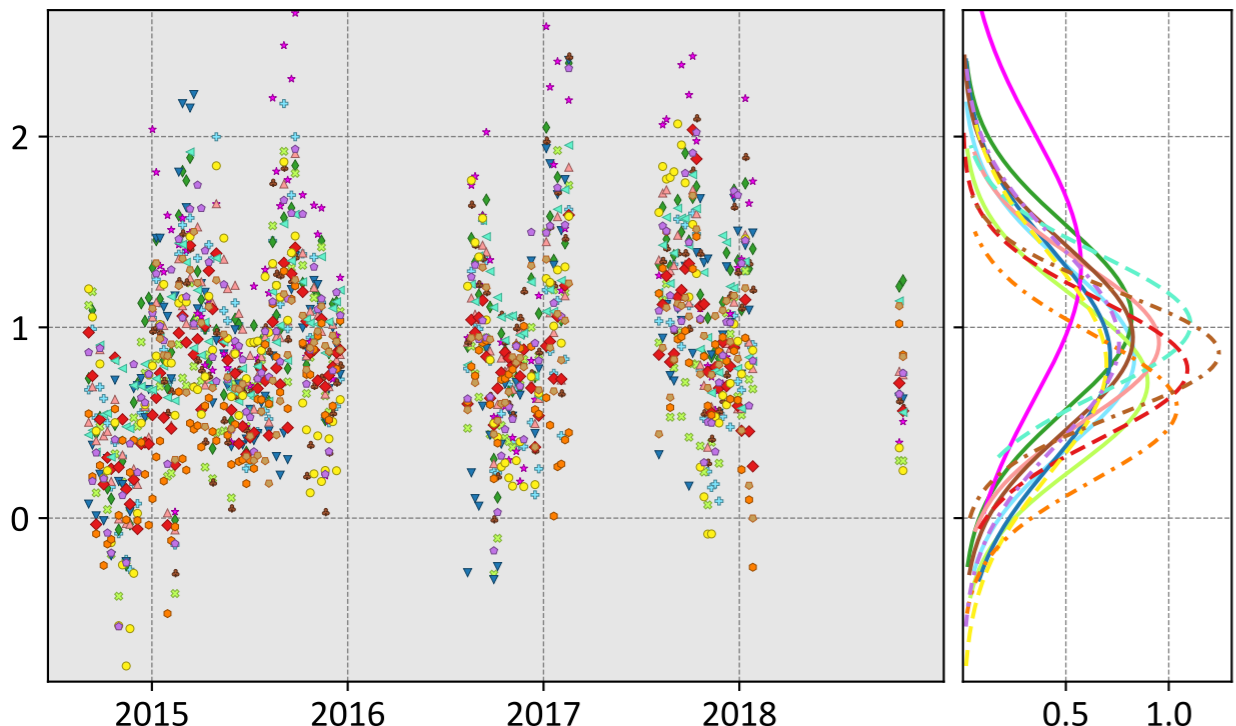


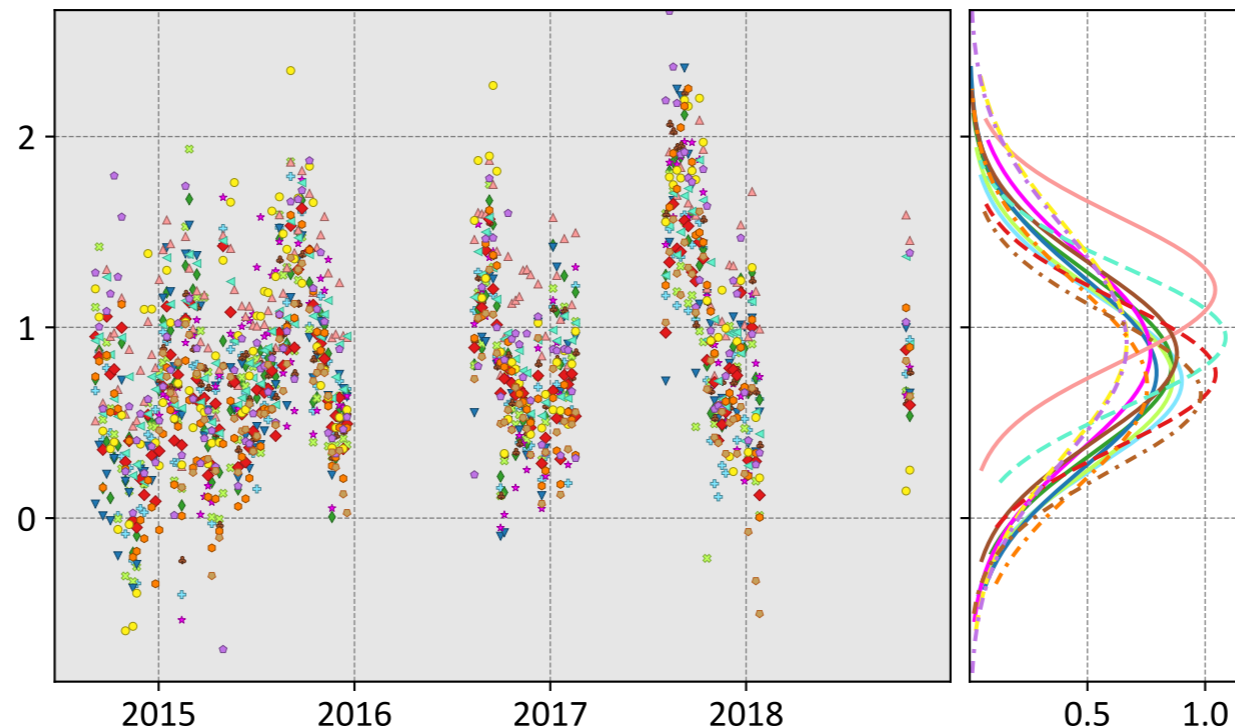
Ascension Island, UK (7 day bins)

LNLGIS



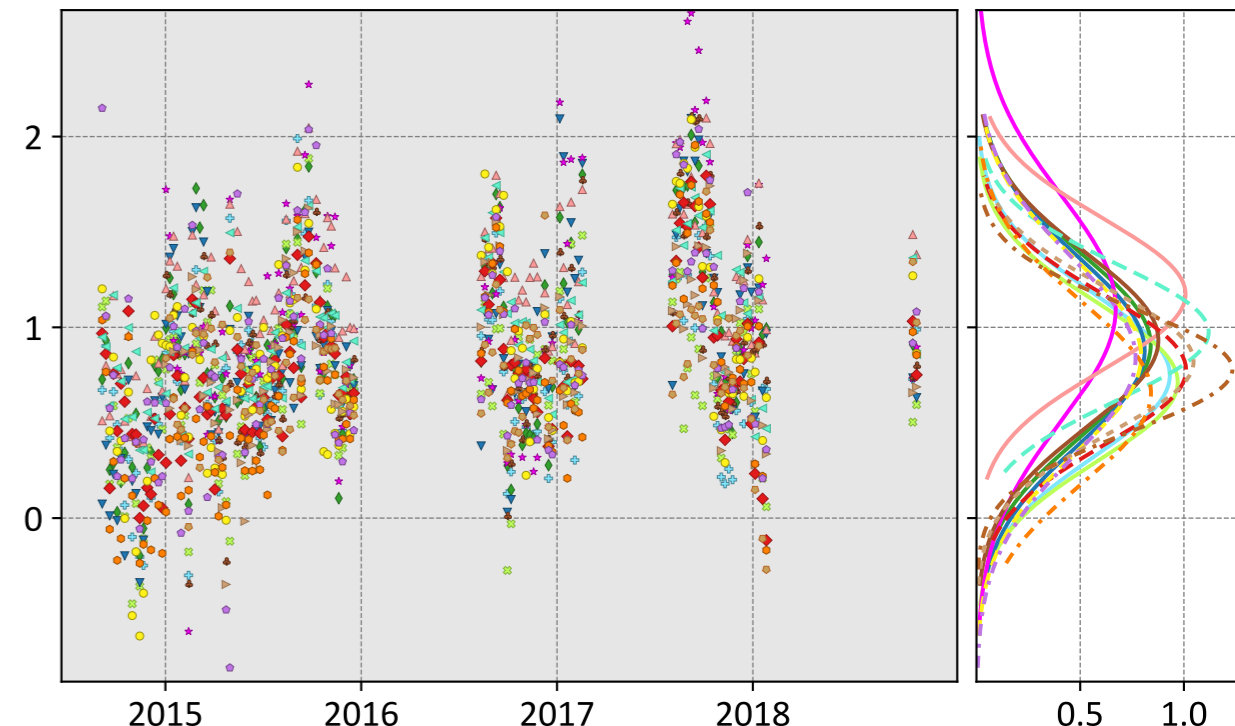
- CSU (0.84, 0.97, 0.02)
- Ames (1.05, 1.16, 0.19)
- COLA (0.71, 0.84, 0.06)
- UT (0.85, 1.01, 0.11)
- CMS-Flux (1.32, 1.49, 0.09)
- WOMBAT (0.92, 1.01, 0.10)
- JHU (0.95, 1.06, 0.12)
- TM5-4DVAR (0.78, 0.86, 0.11)
- OU (1.02, 1.08, 0.14)
- NIES (0.86, 0.92, 0.02)
- CT (0.81, 0.99, 0.11)
- CAMS (0.58, 0.69, 0.17)
- Baker (0.92, 1.06, 0.13)

OG



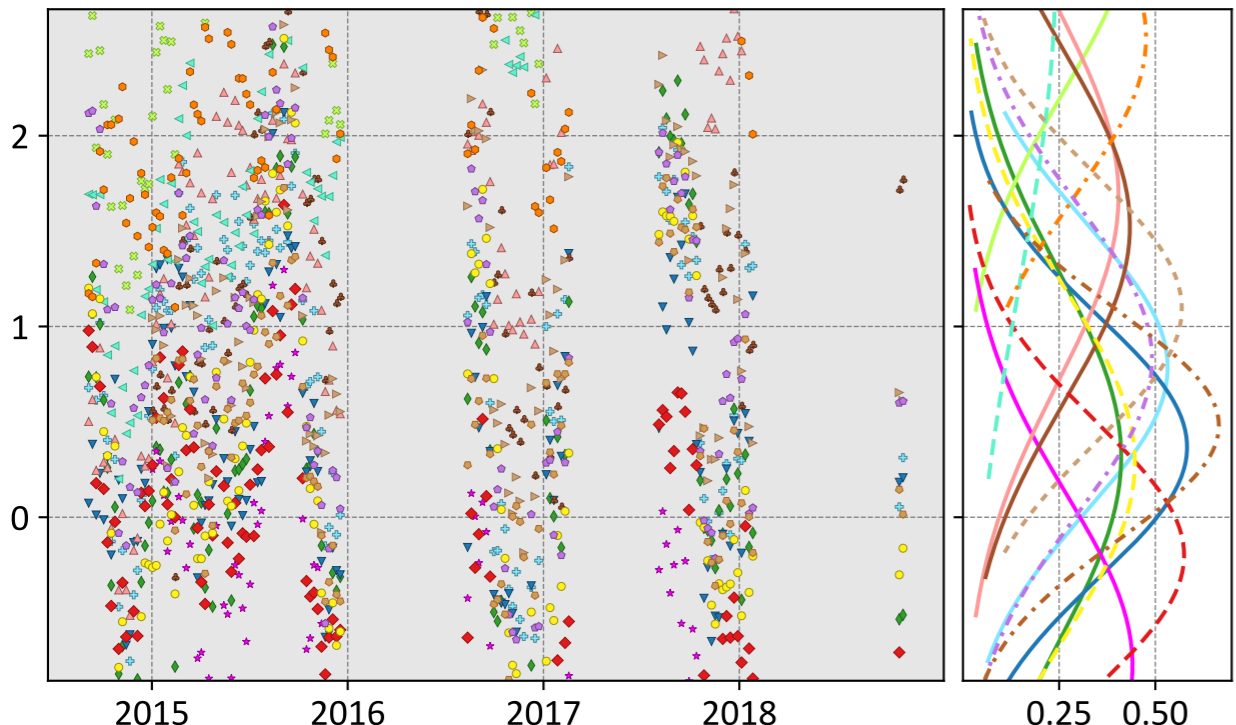
- CSU (0.72, 0.84, 0.09)
- Ames (0.80, 0.93, 0.14)
- COLA (0.73, 0.87, 0.06)
- UT (0.76, 0.91, 0.16)
- CMS-Flux (0.87, 1.01, 0.07)
- WOMBAT (1.20, 1.26, 0.15)
- JHU (0.86, 0.97, 0.11)
- TM5-4DVAR (0.76, 0.85, 0.09)
- OU (0.95, 1.02, 0.09)
- NIES (0.65, 0.77, 0.03)
- CT (0.93, 1.11, 0.12)
- CAMS (0.69, 0.87, 0.21)
- Baker (0.91, 1.09, 0.15)

LNLGOGIS



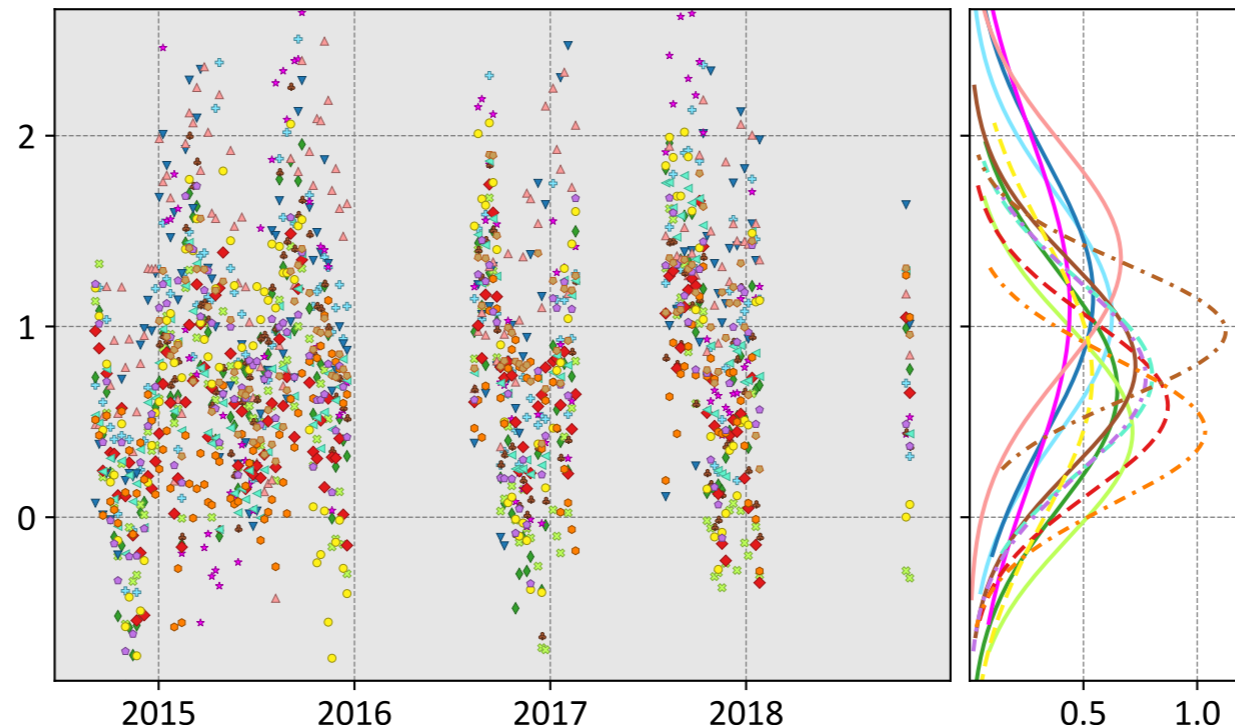
- CSU (0.75, 0.86, 0.08)
- Ames (0.91, 1.02, 0.15)
- COLA (0.71, 0.82, 0.07)
- UT (0.88, 1.00, 0.19)
- CMS-Flux (1.10, 1.25, 0.14)
- WOMBAT (1.17, 1.24, 0.15)
- JHU (0.93, 1.04, 0.12)
- TM5-4DVAR (0.78, 0.87, 0.12)
- OU (0.97, 1.04, 0.13)
- NIES (0.78, 0.84, 0.04)
- Weir (0.82, 0.91, 0.08)
- CAMS (0.66, 0.81, 0.22)
- Baker (0.84, 0.99, 0.13)

prior



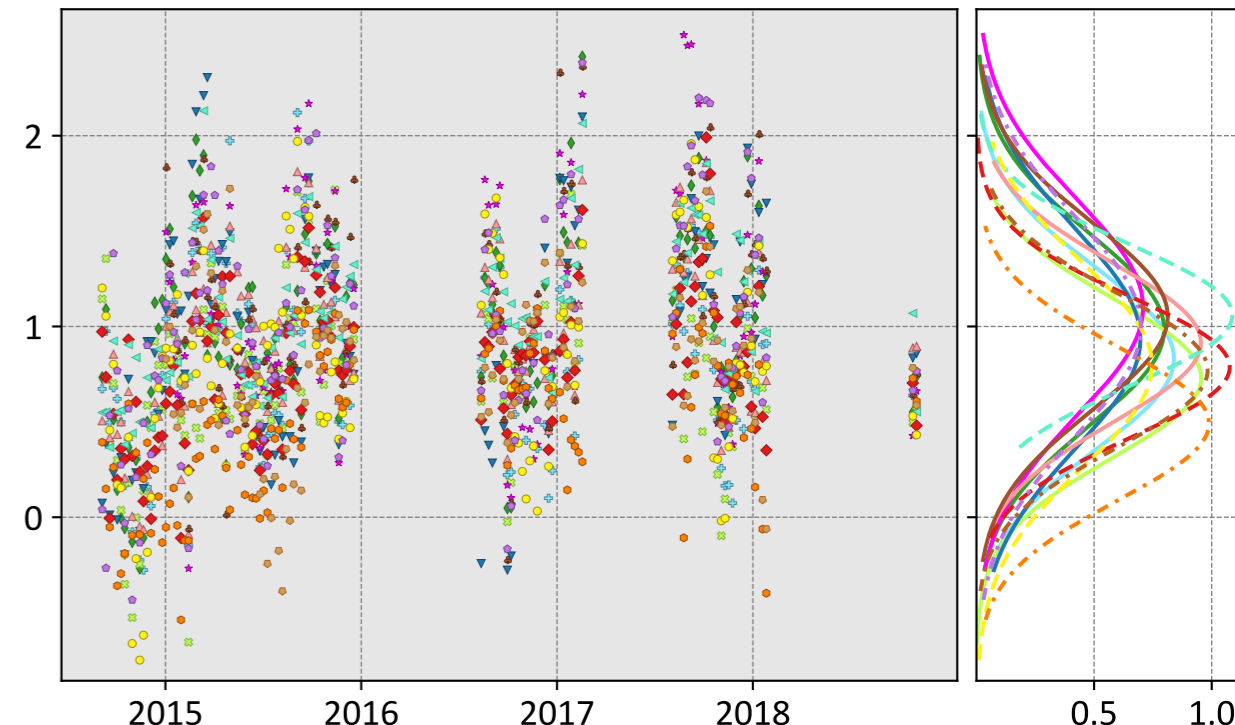
- CSU (0.79, 1.09, -0.06)
- Ames (0.32, 1.02, 0.06)
- COLA (3.16, 3.29, 0.53)
- UT (0.37, 0.78, -0.04)
- CMS-Flux (-0.78, 1.19, -0.53)
- WOMBAT (1.69, 1.95, 0.64)
- JHU (1.52, 1.78, 0.15)
- TM5-4DVAR (-0.20, 0.72, -0.25)
- OU (2.87, 3.31, 1.34)
- CT (0.29, 0.94, 0.01)
- Weir (1.09, 1.30, 0.03)
- CAMS (2.51, 2.65, 0.51)
- Baker (0.83, 1.16, -0.13)
- NIES (0.48, 0.77, -0.02)

IS



- CSU (1.06, 1.23, 0.07)
- Ames (0.67, 0.91, 0.08)
- COLA (0.45, 0.72, -0.08)
- UT (1.16, 1.37, 0.20)
- CMS-Flux (1.10, 1.43, 0.10)
- WOMBAT (1.36, 1.48, 0.09)
- JHU (0.79, 0.96, -0.14)
- TM5-4DVAR (0.58, 0.74, 0.08)
- OU (0.74, 0.89, 0.18)
- CT (0.74, 1.05, 0.06)
- CAMS (0.45, 0.60, 0.15)
- Baker (0.73, 0.90, 0.07)
- NIES (0.97, 1.04, 0.08)

LNLG



- CSU (0.83, 0.96, 0.02)
- Ames (0.98, 1.10, 0.14)
- COLA (0.73, 0.84, 0.06)
- UT (0.94, 1.10, 0.13)
- CMS-Flux (1.10, 1.24, 0.07)
- WOMBAT (0.91, 1.01, 0.11)
- JHU (1.05, 1.16, 0.08)
- TM5-4DVAR (0.79, 0.87, 0.10)
- OU (1.06, 1.12, 0.12)
- CT (0.80, 0.96, 0.12)
- CAMS (0.49, 0.64, 0.16)
- Baker (1.00, 1.15, 0.17)
- NIES (0.77, 0.87, 0.06)

Model - TCCON XCO₂ (ppm)