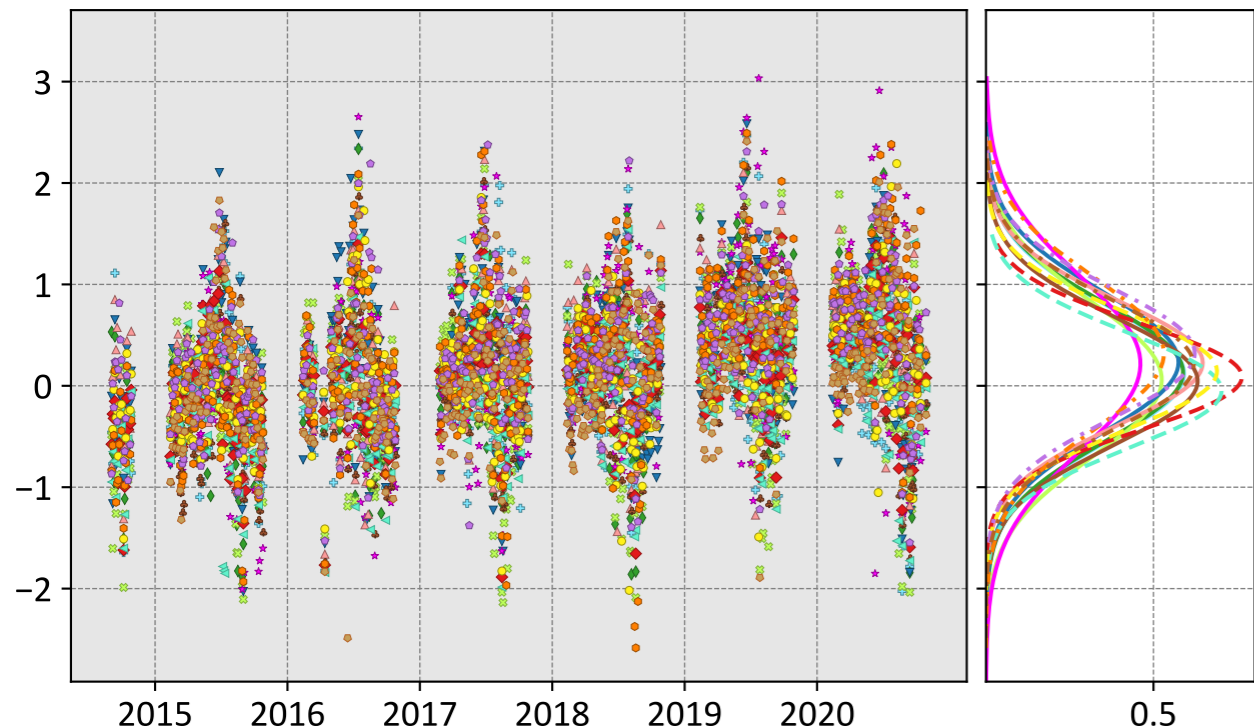


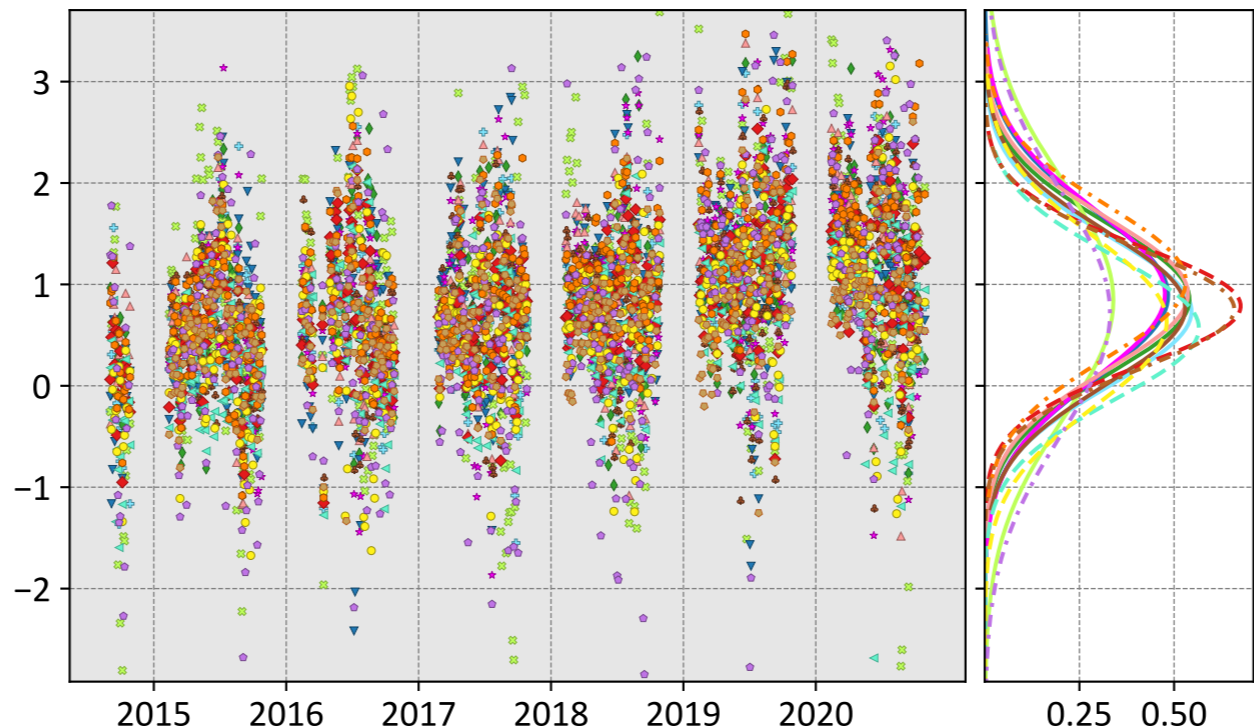
Park Falls, Wisconsin, USA (3 day bins)

LNLGIS



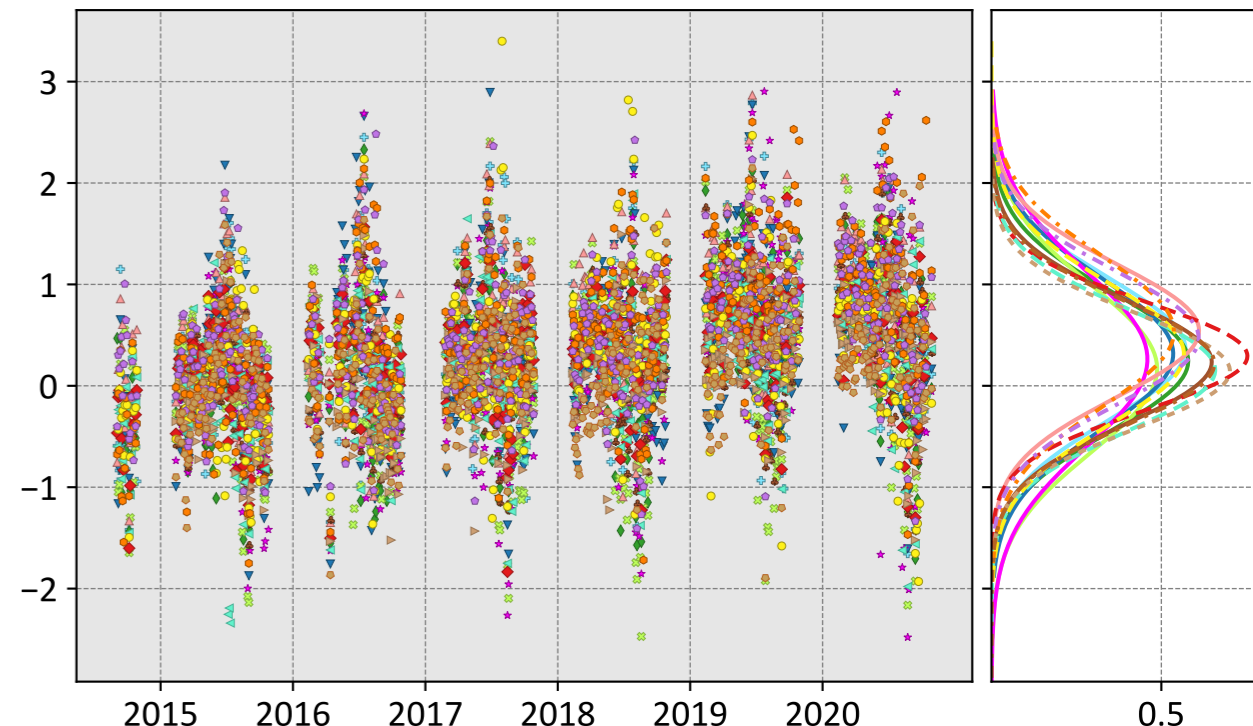
- CSU (0.12, 0.69, 0.08)
- Ames (0.13, 0.69, 0.15)
- COLA (0.06, 0.76, 0.09)
- UT (0.23, 0.73, 0.06)
- CMS-Flux (0.22, 0.89, 0.20)
- WOMBAT (0.23, 0.66, 0.09)
- JHU (0.05, 0.63, 0.12)
- TM5-4DVAR (0.09, 0.53, 0.11)
- OU (-0.05, 0.57, 0.10)
- NIES (0.20, 0.67, 0.11)
- CT (0.14, 0.60, 0.10)
- CAMS (0.32, 0.82, 0.20)
- Baker (0.32, 0.72, 0.12)

OG



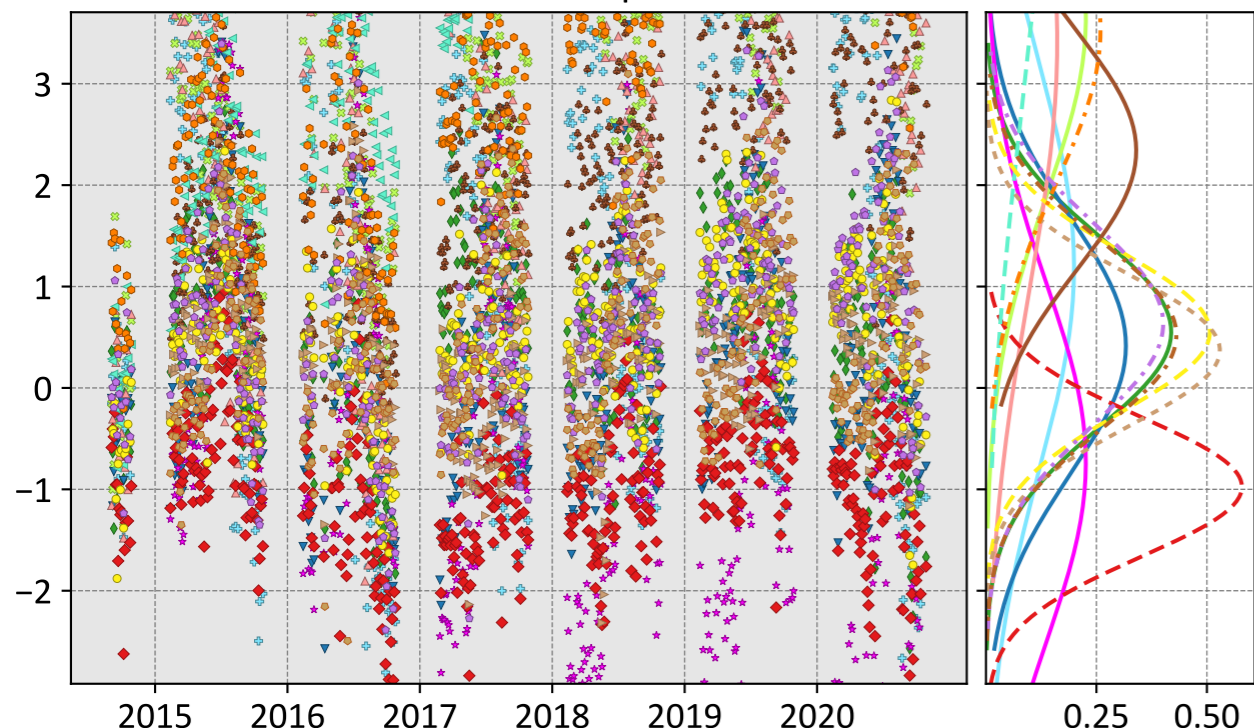
- CSU (0.74, 1.04, 0.13)
- Ames (0.85, 1.13, 0.15)
- COLA (0.84, 1.45, 0.13)
- UT (0.89, 1.21, 0.16)
- CMS-Flux (0.91, 1.24, 0.17)
- WOMBAT (0.90, 1.17, 0.17)
- JHU (0.77, 1.08, 0.17)
- TM5-4DVAR (0.79, 0.98, 0.15)
- OU (0.57, 0.91, 0.15)
- NIES (0.76, 0.97, 0.10)
- CT (0.63, 1.04, 0.16)
- CAMS (1.03, 1.27, 0.22)
- Baker (0.72, 1.40, 0.27)

LNLGOGIS



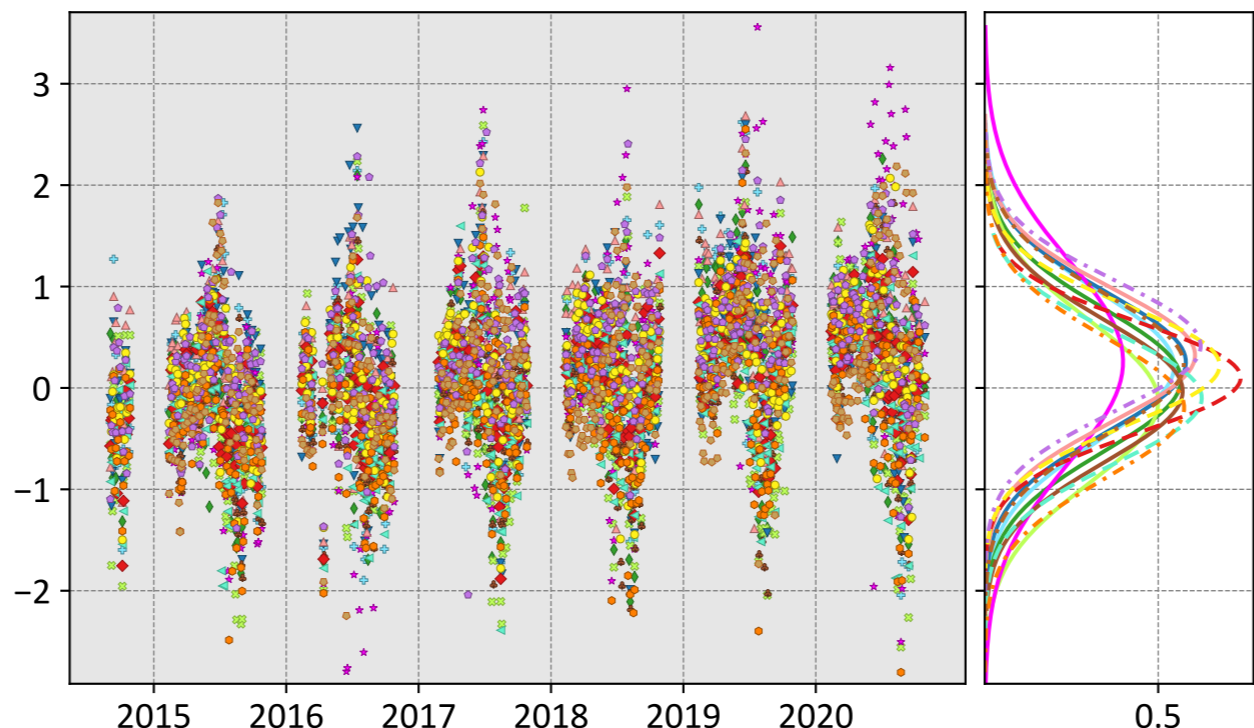
- CSU (0.36, 0.79, 0.12)
- Ames (0.24, 0.73, 0.16)
- COLA (0.17, 0.84, 0.10)
- UT (0.32, 0.81, 0.09)
- CMS-Flux (0.26, 0.91, 0.18)
- WOMBAT (0.54, 0.85, 0.14)
- JHU (0.23, 0.66, 0.12)
- TM5-4DVAR (0.29, 0.61, 0.12)
- OU (0.16, 0.63, 0.12)
- NIES (0.22, 0.65, 0.12)
- Weir (0.15, 0.59, 0.11)
- CAMS (0.53, 0.92, 0.22)
- Baker (0.47, 0.81, 0.14)

prior



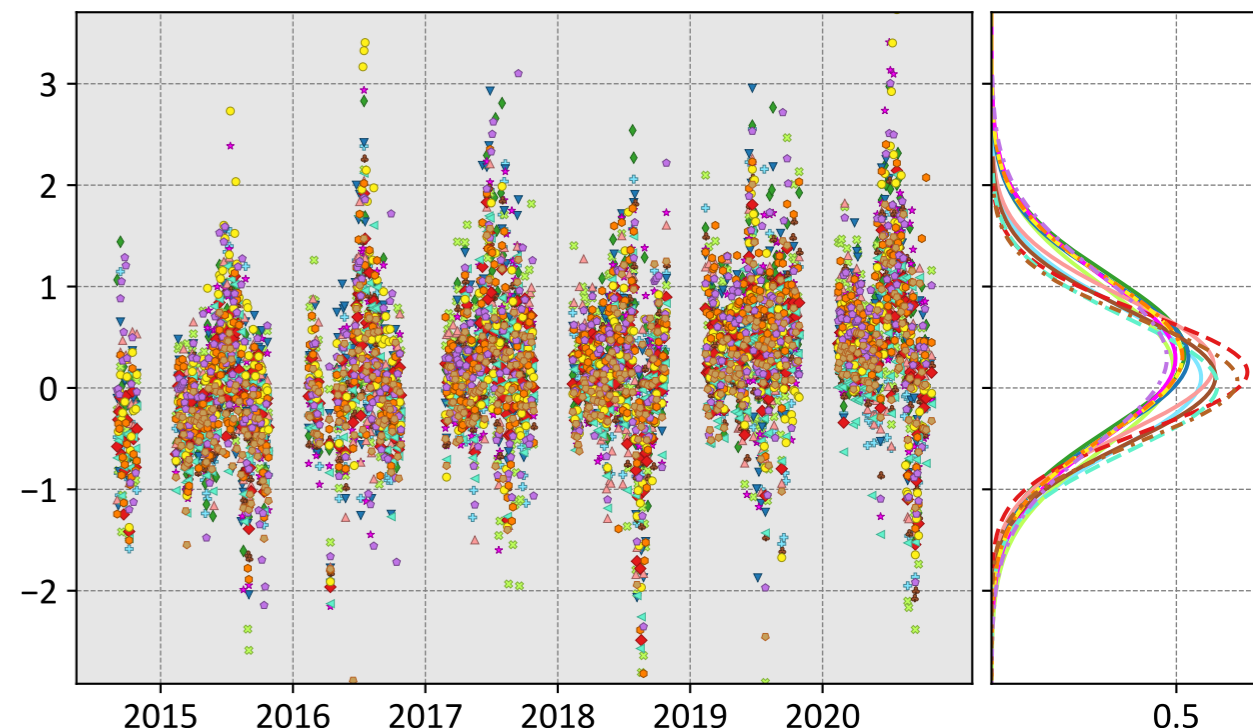
- CSU (1.19, 2.33, 0.07)
- Ames (0.55, 1.10, 0.02)
- COLA (3.66, 4.06, 0.66)
- UT (0.42, 1.33, 0.07)
- CMS-Flux (-0.74, 1.91, -0.47)
- WOMBAT (3.42, 4.22, 0.81)
- JHU (2.34, 2.62, 0.46)
- TM5-4DVAR (-0.98, 1.19, -0.01)
- OU (5.72, 6.48, 1.61)
- NIES (0.52, 1.06, 0.10)
- Weir (0.37, 0.84, -0.04)
- CAMS (3.54, 3.86, 0.68)
- Baker (0.63, 1.18, 0.19)
- CT (0.55, 0.96, 0.14)

IS



- CSU (0.22, 0.76, 0.10)
- Ames (0.08, 0.71, 0.14)
- COLA (-0.14, 0.81, 0.08)
- UT (0.25, 0.73, 0.05)
- CMS-Flux (0.26, 1.03, 0.26)
- WOMBAT (0.32, 0.73, 0.11)
- JHU (-0.03, 0.70, 0.12)
- TM5-4DVAR (0.10, 0.55, 0.11)
- OU (-0.10, 0.65, 0.08)
- NIES (0.23, 0.73, 0.13)
- CT (0.22, 0.63, 0.10)
- CAMS (-0.20, 0.72, 0.10)
- Baker (0.41, 0.76, 0.12)

LNLG



- CSU (0.10, 0.71, 0.08)
- Ames (0.35, 0.84, 0.16)
- COLA (0.20, 0.84, 0.09)
- UT (0.30, 0.81, 0.12)
- CMS-Flux (0.29, 0.85, 0.14)
- WOMBAT (0.22, 0.70, 0.09)
- JHU (0.11, 0.67, 0.12)
- TM5-4DVAR (0.16, 0.60, 0.12)
- OU (0.03, 0.65, 0.09)
- NIES (0.07, 0.60, 0.16)
- CT (0.30, 0.83, 0.07)
- CAMS (0.31, 0.83, 0.20)
- Baker (0.30, 0.89, 0.13)

Model - TCCON XCO₂ (ppm)