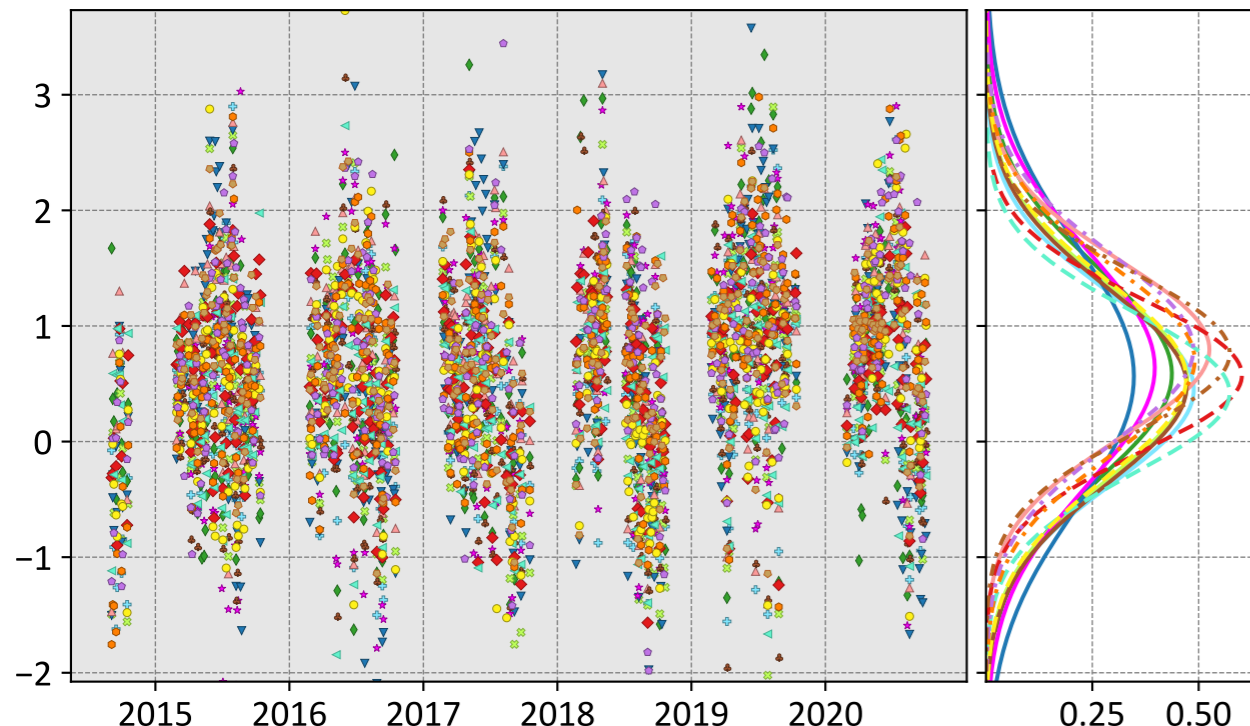


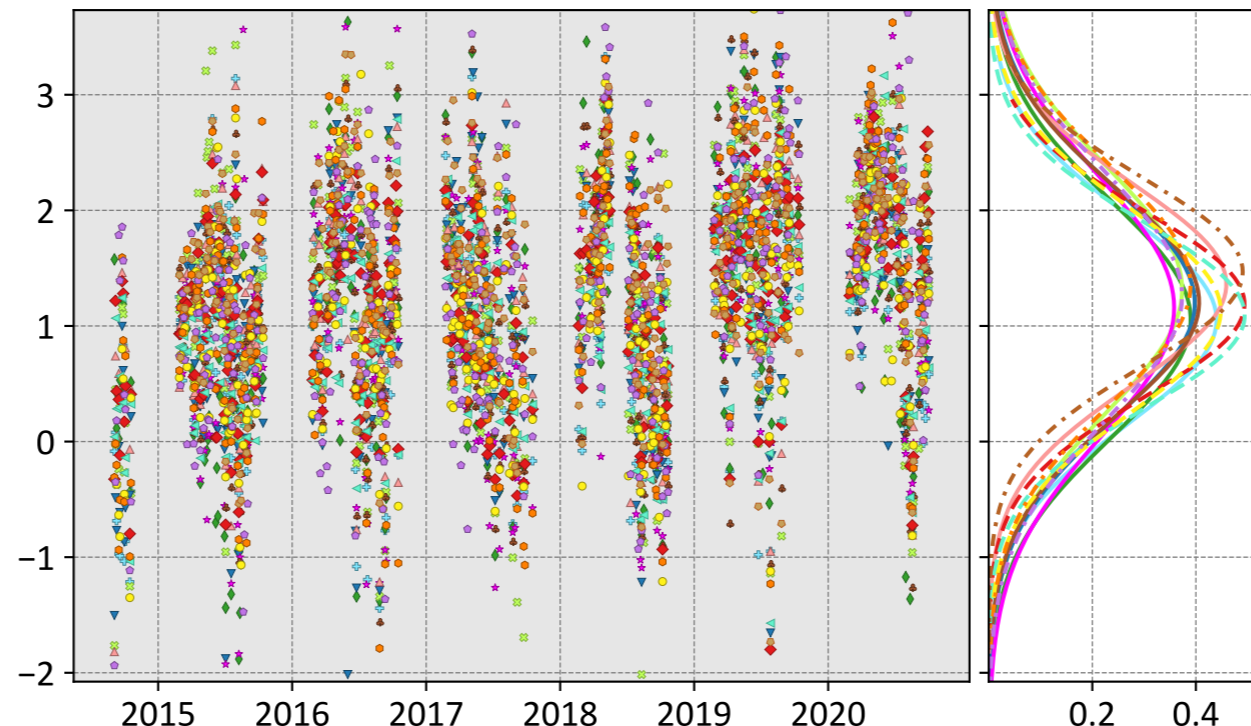
Karlsruhe, Baden-Württemberg, Germany (3 day bins)

LNLGIS



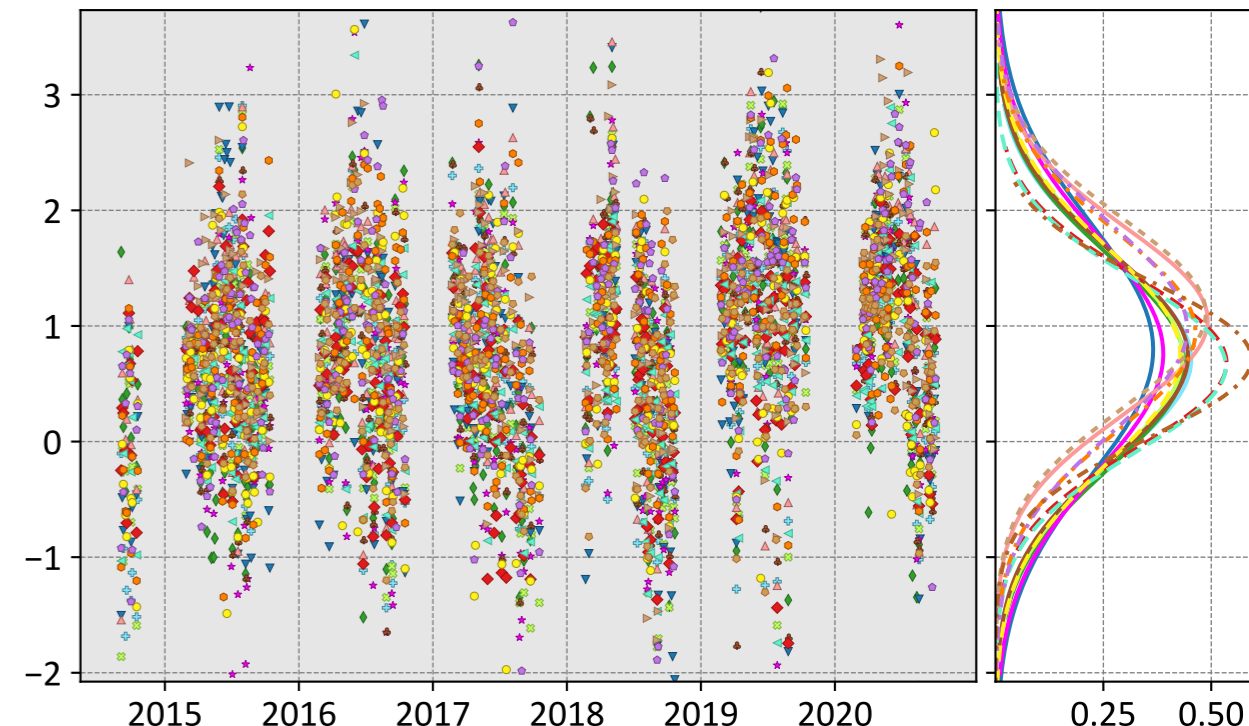
- CSU (0.45, 0.93, 0.06)
- Ames (0.58, 1.08, 0.09)
- COLA (0.52, 0.99, 0.06)
- UT (0.56, 1.28, 0.04)
- CMS-Flux (0.64, 1.19, 0.15)
- WOMBAT (0.80, 1.10, 0.05)
- JHU (0.48, 0.97, 0.07)
- TM5-4DVAR (0.57, 0.88, 0.03)
- OU (0.42, 0.81, 0.06)
- NIES (0.76, 1.03, 0.02)
- CT (0.54, 1.01, 0.09)
- CAMS (0.70, 1.07, 0.16)
- Baker (0.80, 1.14, 0.11)

OG



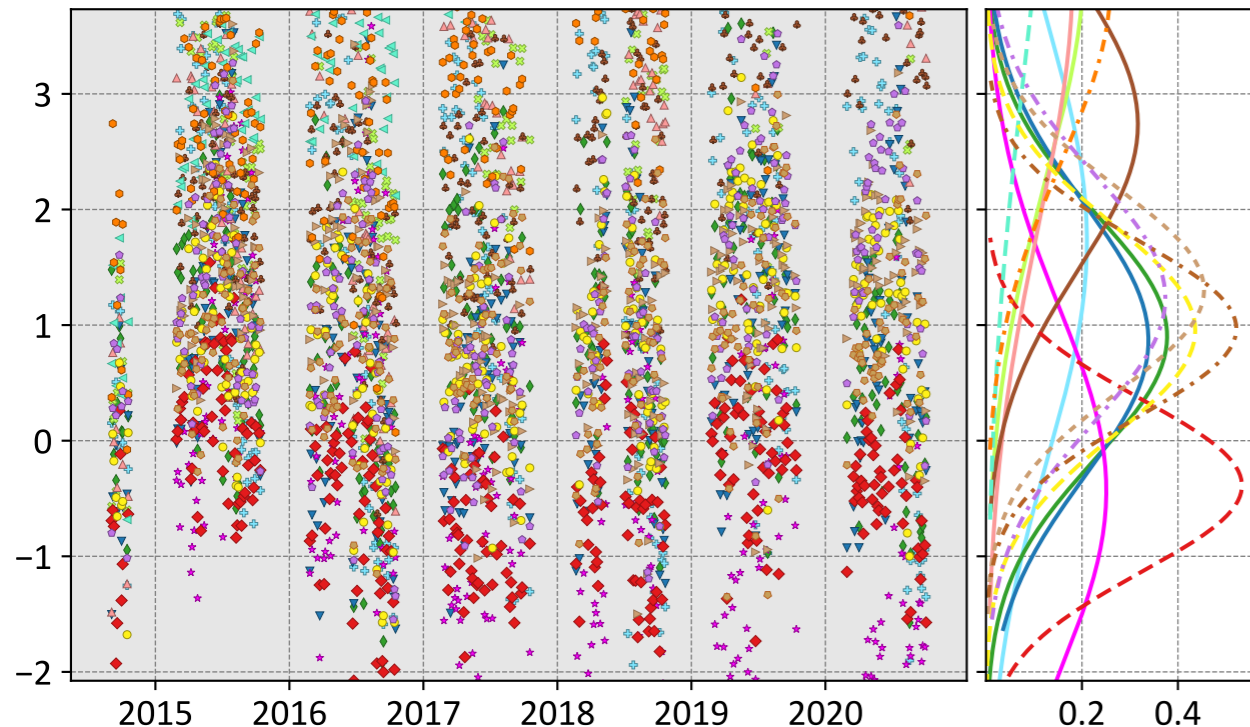
- CSU (1.05, 1.39, 0.12)
- Ames (1.06, 1.47, 0.15)
- COLA (1.32, 1.70, 0.11)
- UT (1.20, 1.56, 0.17)
- CMS-Flux (1.16, 1.61, 0.16)
- WOMBAT (1.36, 1.61, 0.14)
- JHU (1.21, 1.55, 0.14)
- TM5-4DVAR (1.19, 1.44, 0.14)
- OU (1.09, 1.36, 0.16)
- NIES (1.47, 1.68, 0.06)
- CT (1.13, 1.44, 0.14)
- CAMS (1.35, 1.70, 0.21)
- Baker (1.25, 1.65, 0.22)

LNLGOGIS



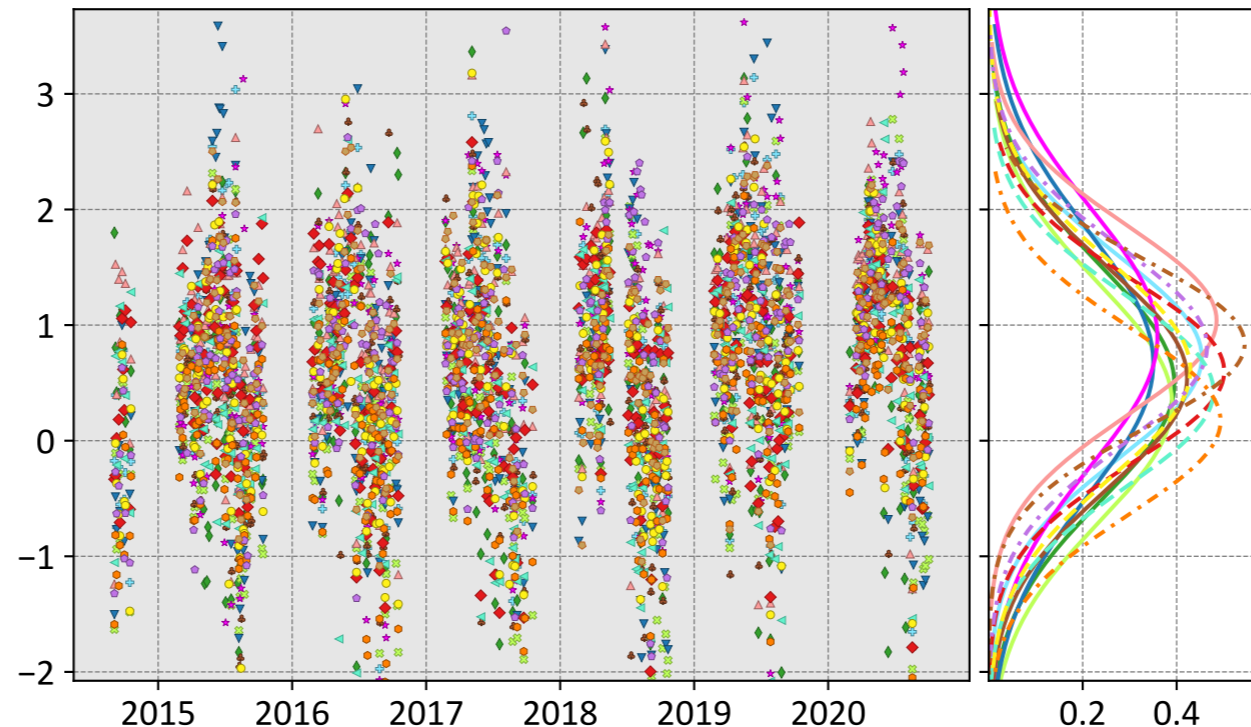
- CSU (0.71, 1.13, 0.10)
- Ames (0.69, 1.14, 0.10)
- COLA (0.73, 1.18, 0.11)
- UT (0.80, 1.35, 0.11)
- CMS-Flux (0.76, 1.28, 0.14)
- WOMBAT (1.05, 1.33, 0.10)
- JHU (0.74, 1.16, 0.11)
- TM5-4DVAR (0.68, 1.01, 0.05)
- OU (0.65, 0.99, 0.08)
- NIES (0.71, 0.98, 0.02)
- Weir (1.11, 1.38, 0.05)
- CAMS (0.95, 1.28, 0.15)
- Baker (0.98, 1.33, 0.12)

prior



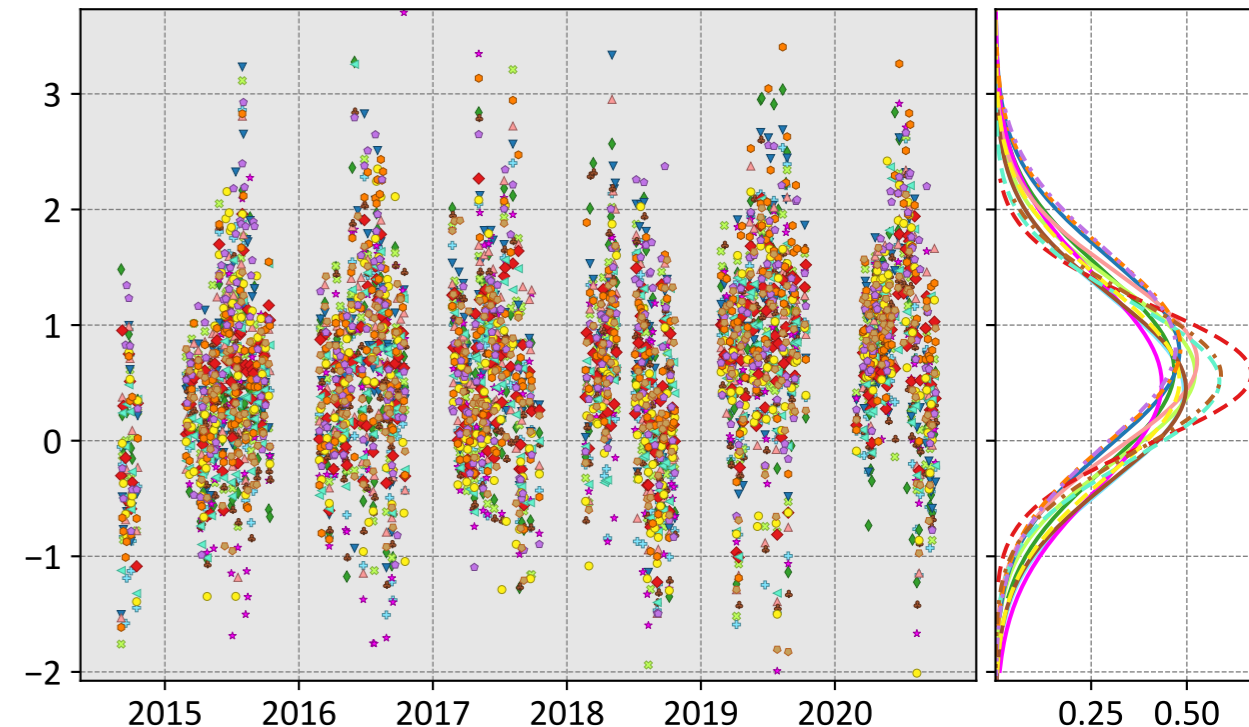
- CSU (1.73, 2.56, 0.04)
- Ames (0.90, 1.39, -0.05)
- COLA (4.20, 4.63, 0.63)
- UT (0.87, 1.46, 0.04)
- CMS-Flux (-0.43, 1.65, -0.48)
- WOMBAT (4.07, 4.63, 0.79)
- JHU (2.74, 3.01, 0.42)
- TM5-4DVAR (-0.39, 0.84, -0.04)
- OU (6.24, 6.90, 1.57)
- NIES (0.97, 1.23, 0.03)
- Weir (1.30, 1.57, -0.10)
- CAMS (3.95, 4.24, 0.67)
- Baker (1.23, 1.63, 0.14)
- CT (0.95, 1.32, 0.11)

IS



- CSU (0.72, 1.14, 0.08)
- Ames (0.49, 1.12, 0.06)
- COLA (0.33, 1.07, 0.11)
- UT (0.67, 1.32, 0.02)
- CMS-Flux (0.90, 1.43, 0.22)
- WOMBAT (1.04, 1.33, 0.06)
- JHU (0.54, 1.09, 0.11)
- TM5-4DVAR (0.60, 1.00, 0.01)
- OU (0.43, 0.94, 0.07)
- NIES (0.84, 1.11, 0.05)
- CT (0.61, 1.11, 0.09)
- CAMS (0.17, 0.83, 0.09)
- Baker (0.81, 1.18, 0.16)

LNLG



- CSU (0.44, 0.92, 0.06)
- Ames (0.61, 1.05, 0.09)
- COLA (0.59, 0.97, 0.07)
- UT (0.77, 1.13, 0.08)
- CMS-Flux (0.49, 1.04, 0.11)
- WOMBAT (0.69, 1.02, 0.07)
- JHU (0.45, 0.92, 0.06)
- TM5-4DVAR (0.58, 0.83, 0.08)
- OU (0.52, 0.86, 0.11)
- NIES (0.57, 0.88, 0.09)
- CT (0.52, 0.98, 0.05)
- CAMS (0.81, 1.15, 0.16)
- Baker (0.81, 1.17, 0.09)

Model - TCCON XCO₂ (ppm)