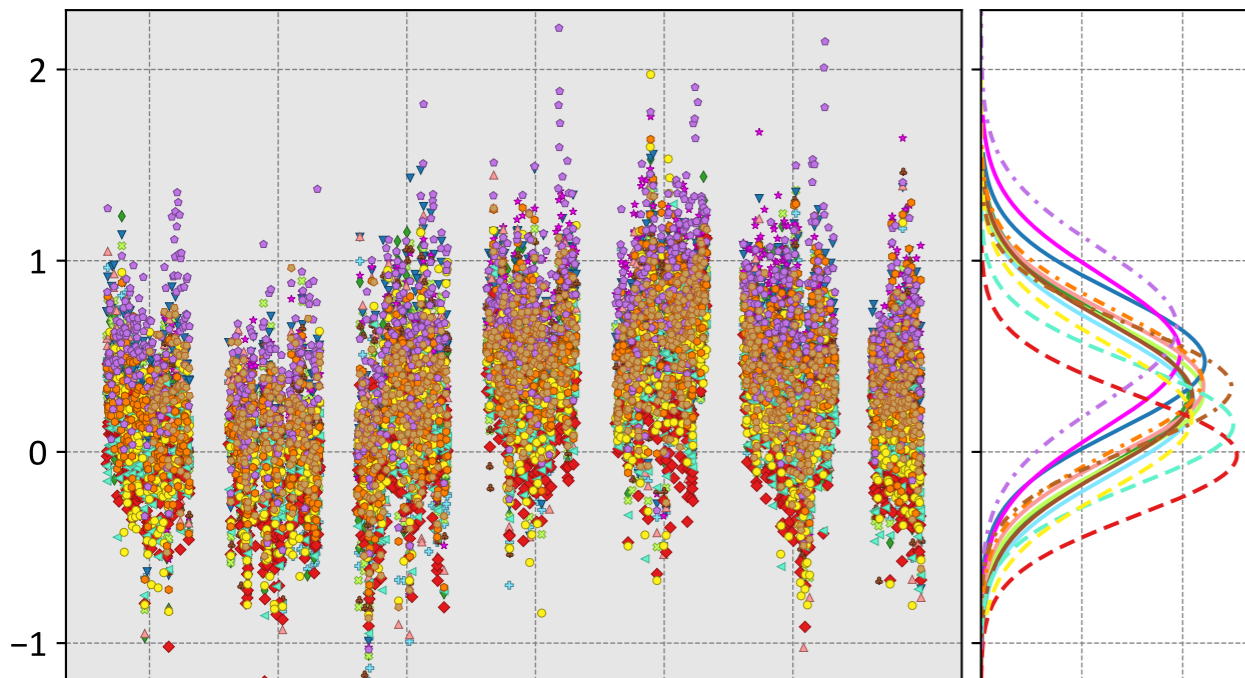


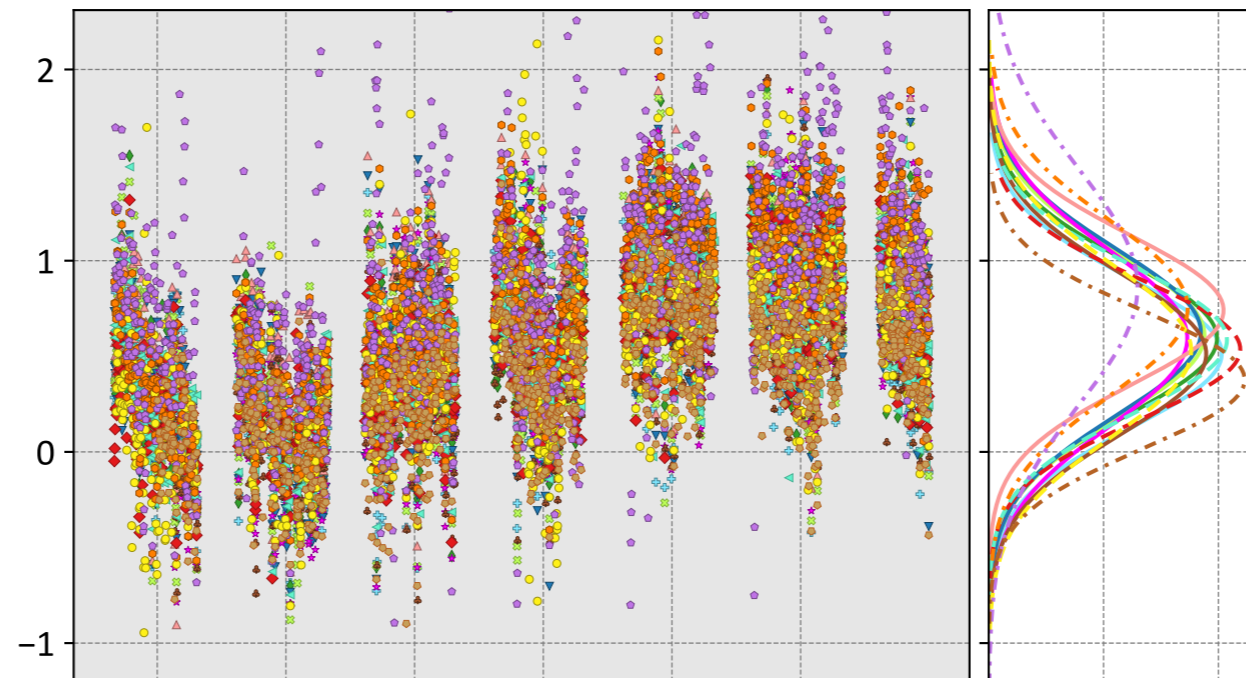
Lauder, Otago, New Zealand (125HR) (1 day bins)

LNLGIS



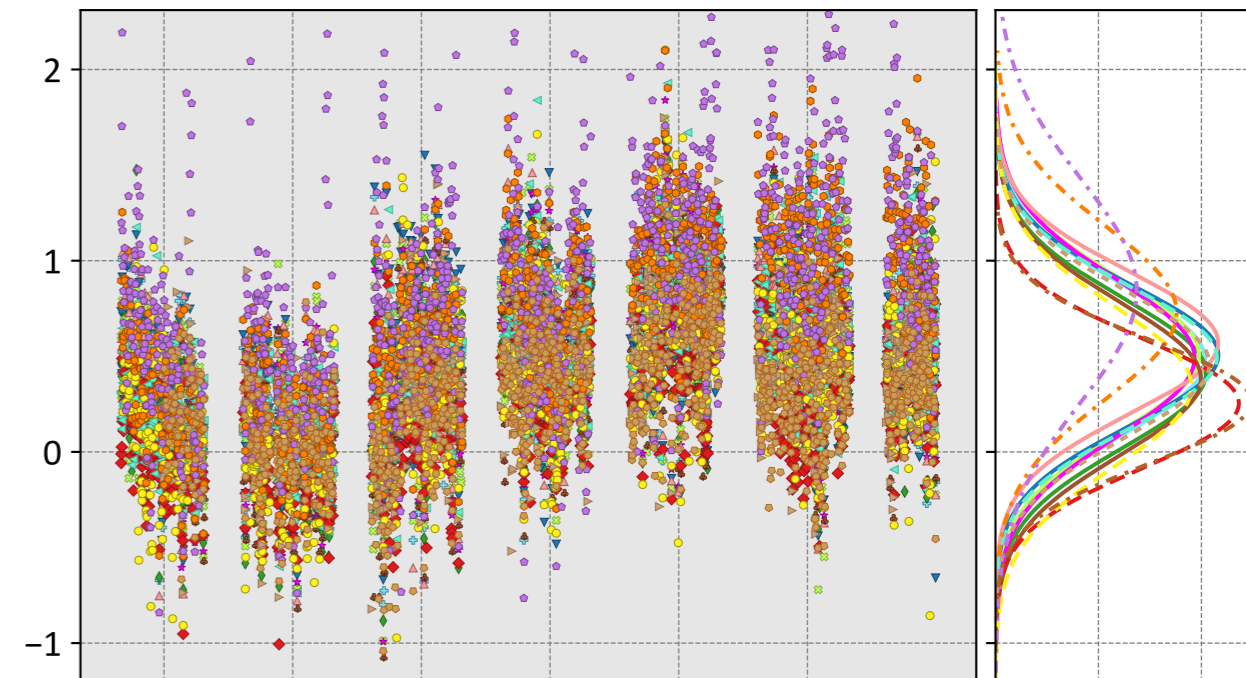
- CSU (0.25, 0.46, 0.06)
- Ames (0.31, 0.50, 0.08)
- COLA (0.30, 0.47, 0.04)
- UT (0.47, 0.59, 0.05)
- CMS-Flux (0.52, 0.66, 0.11)
- WOMBAT (0.35, 0.50, 0.04)
- JHU (0.29, 0.48, 0.07)
- TM5-4DVAR (-0.02, 0.31, 0.05)
- OU (0.14, 0.35, 0.06)
- NIES (0.34, 0.47, 0.04)
- CT (0.18, 0.42, 0.04)
- CAMS (0.38, 0.52, 0.09)
- Baker (0.65, 0.77, 0.05)
- NIES (0.34, 0.47, 0.04)

OG



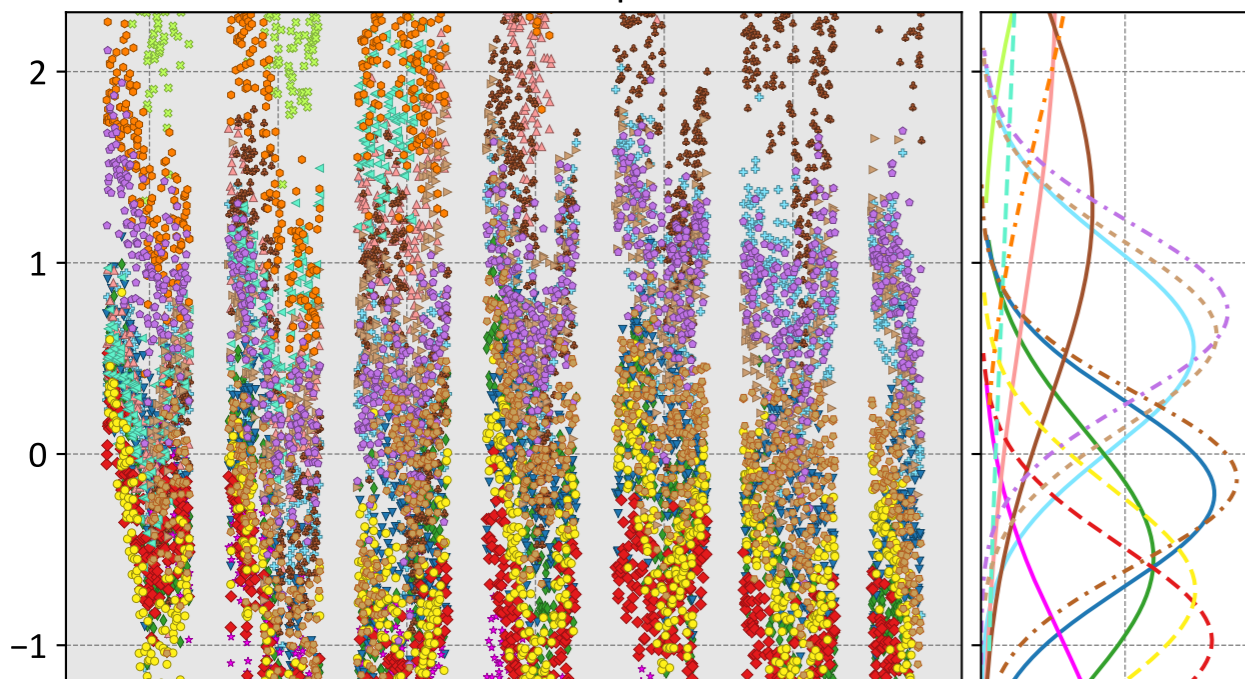
- CSU (0.51, 0.65, 0.09)
- Ames (0.59, 0.72, 0.12)
- COLA (0.61, 0.74, 0.11)
- UT (0.63, 0.76, 0.12)
- CMS-Flux (0.59, 0.75, 0.16)
- WOMBAT (0.74, 0.84, 0.11)
- JHU (0.51, 0.66, 0.15)
- TM5-4DVAR (0.54, 0.65, 0.12)
- OU (0.59, 0.70, 0.12)
- NIES (0.38, 0.52, 0.11)
- CT (0.53, 0.70, 0.12)
- CAMS (0.75, 0.88, 0.16)
- Baker (0.86, 1.06, 0.14)
- NIES (0.38, 0.52, 0.11)

LNLGOGIS



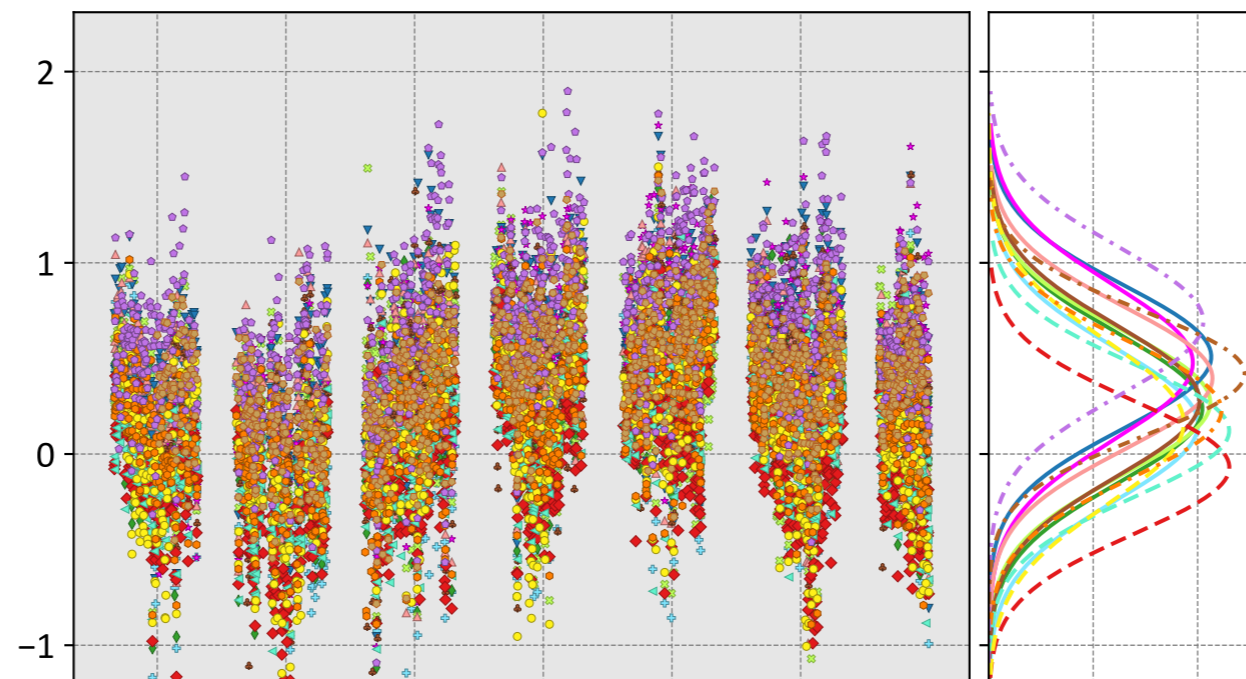
- CSU (0.48, 0.62, 0.09)
- Ames (0.41, 0.57, 0.10)
- COLA (0.51, 0.65, 0.10)
- UT (0.51, 0.63, 0.06)
- CMS-Flux (0.49, 0.64, 0.12)
- WOMBAT (0.57, 0.68, 0.08)
- JHU (0.38, 0.55, 0.11)
- TM5-4DVAR (0.25, 0.42, 0.09)
- OU (0.49, 0.62, 0.11)
- NIES (0.26, 0.41, 0.06)
- Weir (0.46, 0.60, 0.10)
- CAMS (0.73, 0.86, 0.17)
- Baker (0.84, 1.03, 0.14)
- NIES (0.26, 0.41, 0.06)

prior



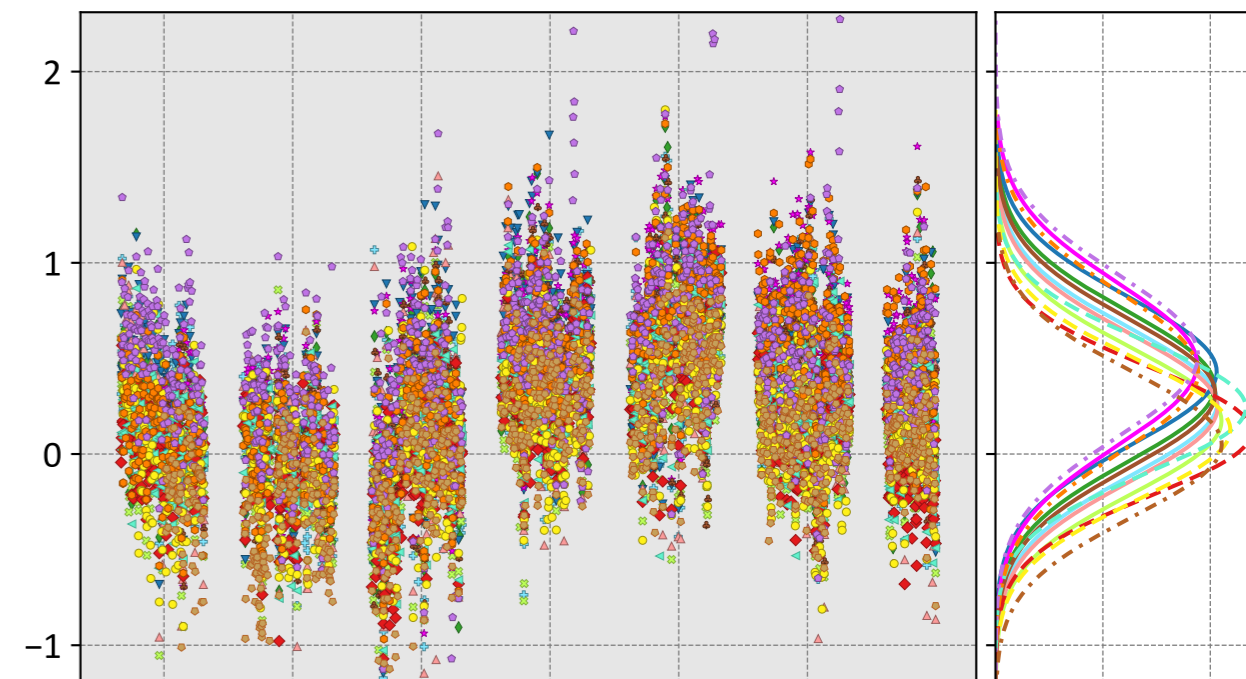
- CSU (0.56, 0.78, 0.10)
- Ames (-0.55, 0.86, -0.10)
- COLA (4.02, 4.17, 0.52)
- UT (-0.21, 0.53, -0.02)
- CMS-Flux (-1.83, 2.03, -0.45)
- WOMBAT (2.38, 2.84, 0.76)
- JHU (1.29, 1.65, 0.43)
- TM5-4DVAR (-0.98, 1.10, -0.10)
- OU (4.04, 4.94, 1.47)
- NIES (-0.13, 0.47, 0.04)
- Weir (0.62, 0.79, 0.03)
- CAMS (2.93, 3.17, 0.57)
- Baker (0.74, 0.88, 0.03)
- NIES (-0.13, 0.47, 0.04)

IS



- CSU (0.16, 0.43, 0.05)
- Ames (0.24, 0.46, 0.08)
- COLA (0.27, 0.46, 0.01)
- UT (0.51, 0.63, 0.05)
- CMS-Flux (0.48, 0.63, 0.12)
- WOMBAT (0.40, 0.54, 0.04)
- JHU (0.28, 0.48, 0.06)
- TM5-4DVAR (-0.07, 0.35, 0.03)
- OU (0.12, 0.37, 0.07)
- NIES (0.42, 0.53, 0.06)
- CT (0.16, 0.46, 0.04)
- CAMS (0.23, 0.42, 0.05)
- Baker (0.69, 0.79, 0.05)
- NIES (0.42, 0.53, 0.06)

LNLG



- CSU (0.27, 0.47, 0.06)
- Ames (0.35, 0.53, 0.07)
- COLA (0.17, 0.42, 0.05)
- UT (0.43, 0.58, 0.06)
- CMS-Flux (0.47, 0.63, 0.13)
- WOMBAT (0.24, 0.46, 0.04)
- JHU (0.32, 0.50, 0.07)
- TM5-4DVAR (0.12, 0.35, 0.05)
- OU (0.24, 0.42, 0.07)
- NIES (0.05, 0.38, 0.10)
- CT (0.13, 0.39, 0.05)
- CAMS (0.43, 0.60, 0.13)
- Baker (0.51, 0.67, 0.04)
- NIES (0.05, 0.38, 0.10)

Model - TCCON XCO₂ (ppm)