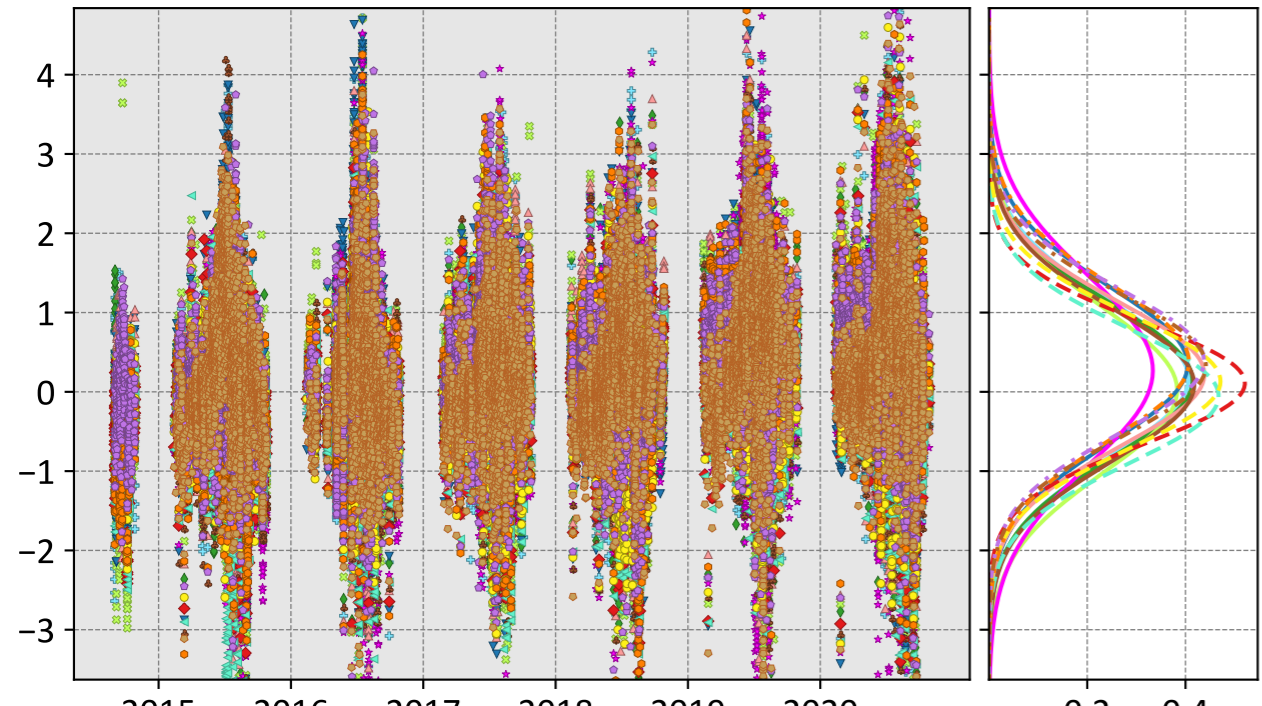


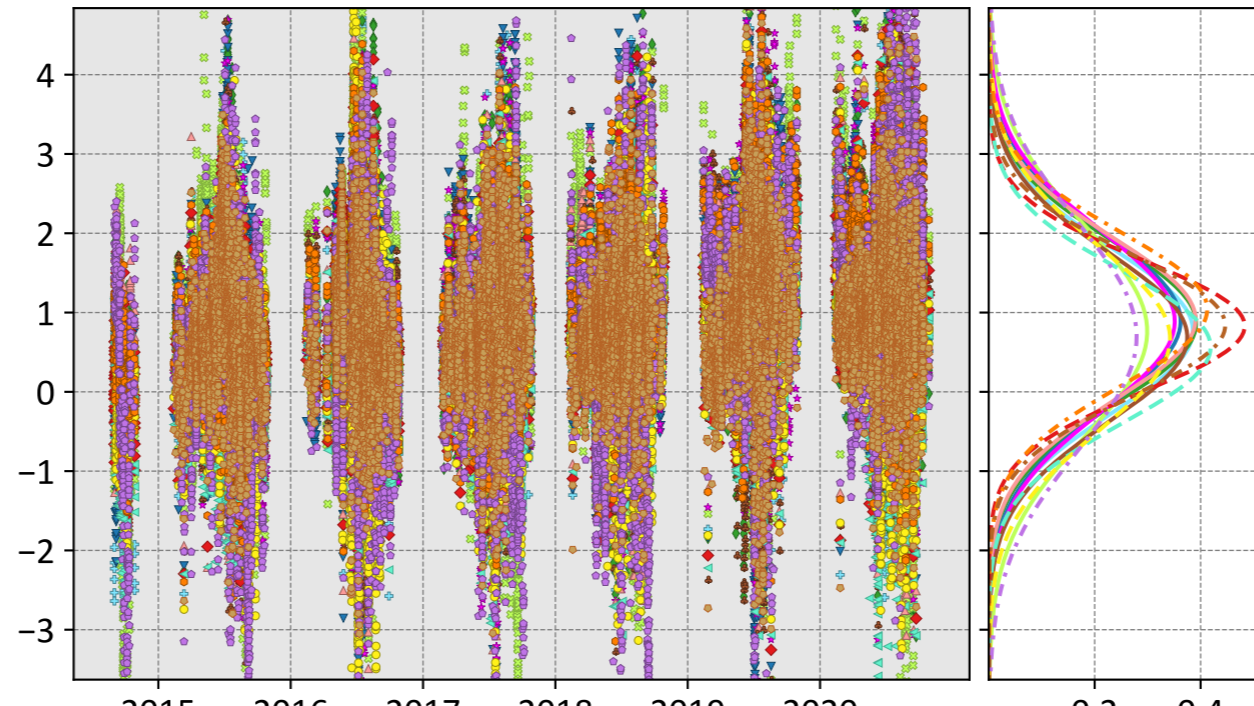
Park Falls, Wisconsin, USA

LNLGIS



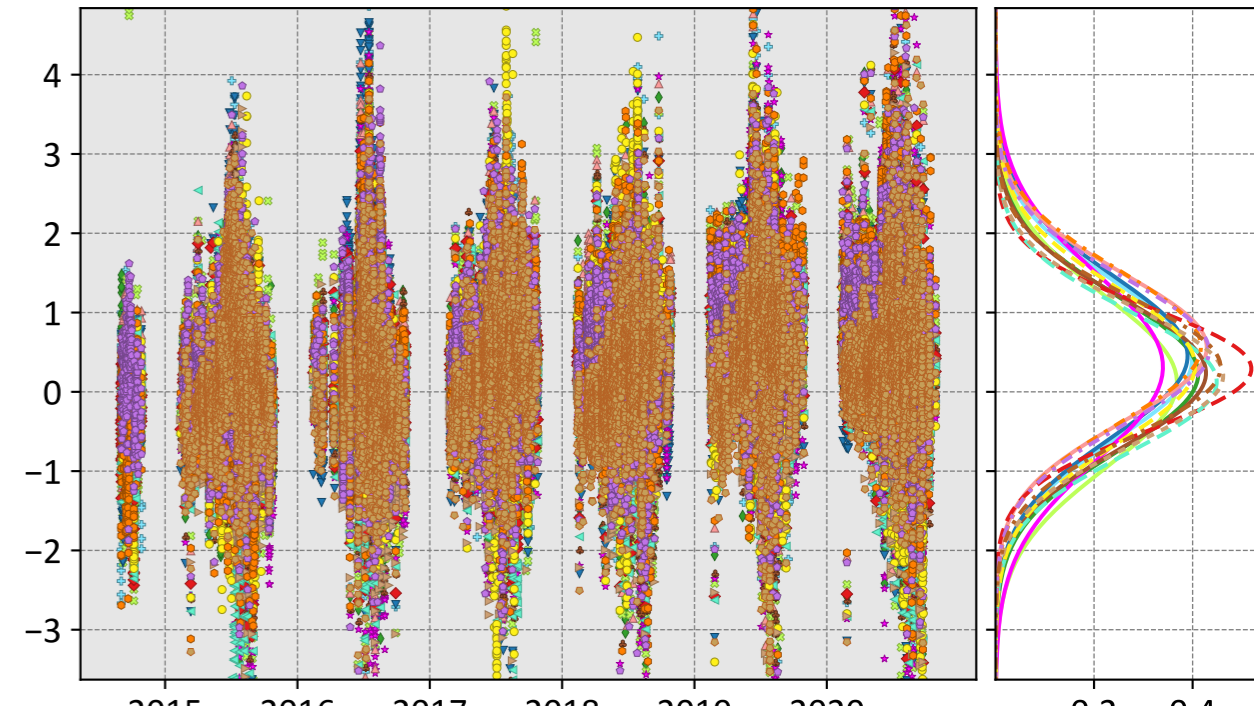
- CSU (0.16, 1.00, 0.05)
- Ames (0.14, 0.97, 0.14)
- COLA (0.02, 1.04, 0.07)
- UT (0.34, 1.04, 0.04)
- CMS-Flux (0.27, 1.23, 0.19)
- WOMBAT (0.22, 0.94, 0.07)
- JHU (0.09, 0.96, 0.09)
- TM5-4DVAR (0.11, 0.77, 0.09)
- OU (-0.05, 0.86, 0.09)
- NIES (0.33, 0.96, 0.09)
- CT (0.13, 0.86, 0.08)
- CAMS (0.38, 1.05, 0.18)
- Baker (0.39, 0.99, 0.09)

OG



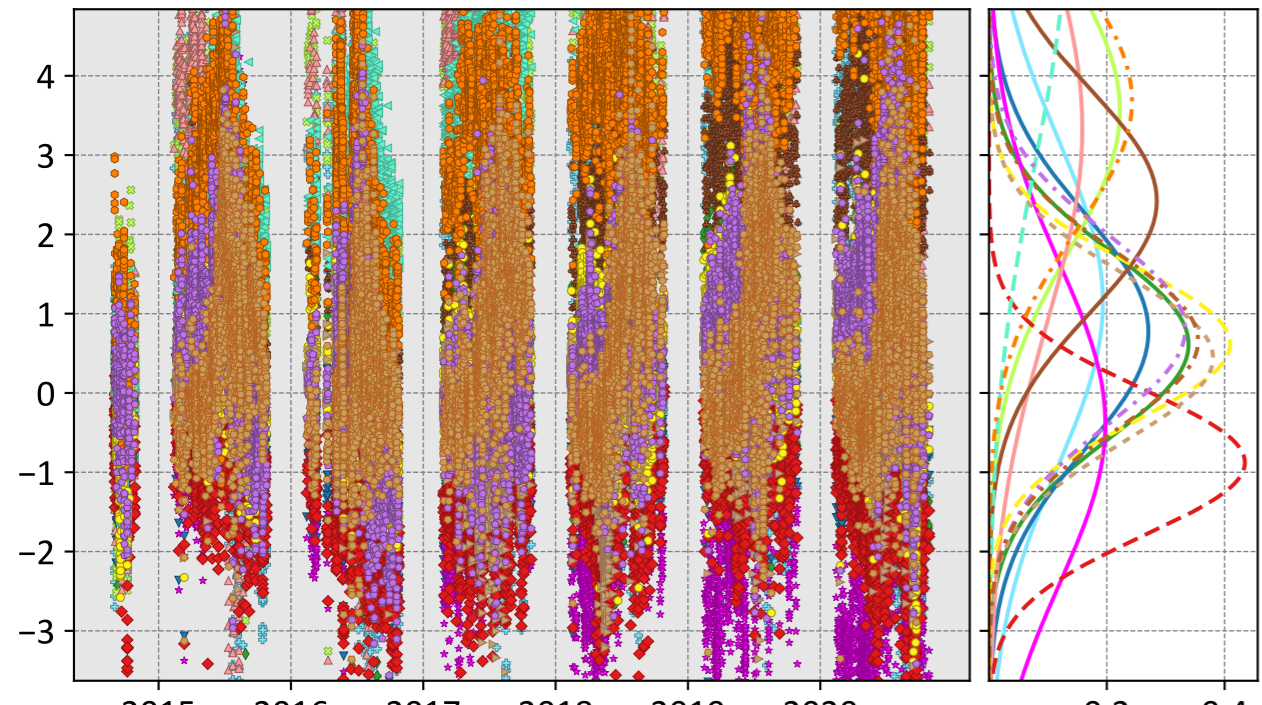
- CSU (0.77, 1.29, 0.09)
- Ames (0.86, 1.34, 0.11)
- COLA (0.76, 1.54, 0.06)
- UT (0.89, 1.42, 0.11)
- CMS-Flux (0.89, 1.44, 0.15)
- WOMBAT (0.91, 1.37, 0.13)
- JHU (0.69, 1.27, 0.15)
- TM5-4DVAR (0.83, 1.17, 0.12)
- OU (0.56, 1.11, 0.12)
- NIES (0.84, 1.22, 0.07)
- CT (0.67, 1.34, 0.14)
- CAMS (1.04, 1.42, 0.18)
- Baker (0.70, 1.59, 0.21)

LNLGOGIS



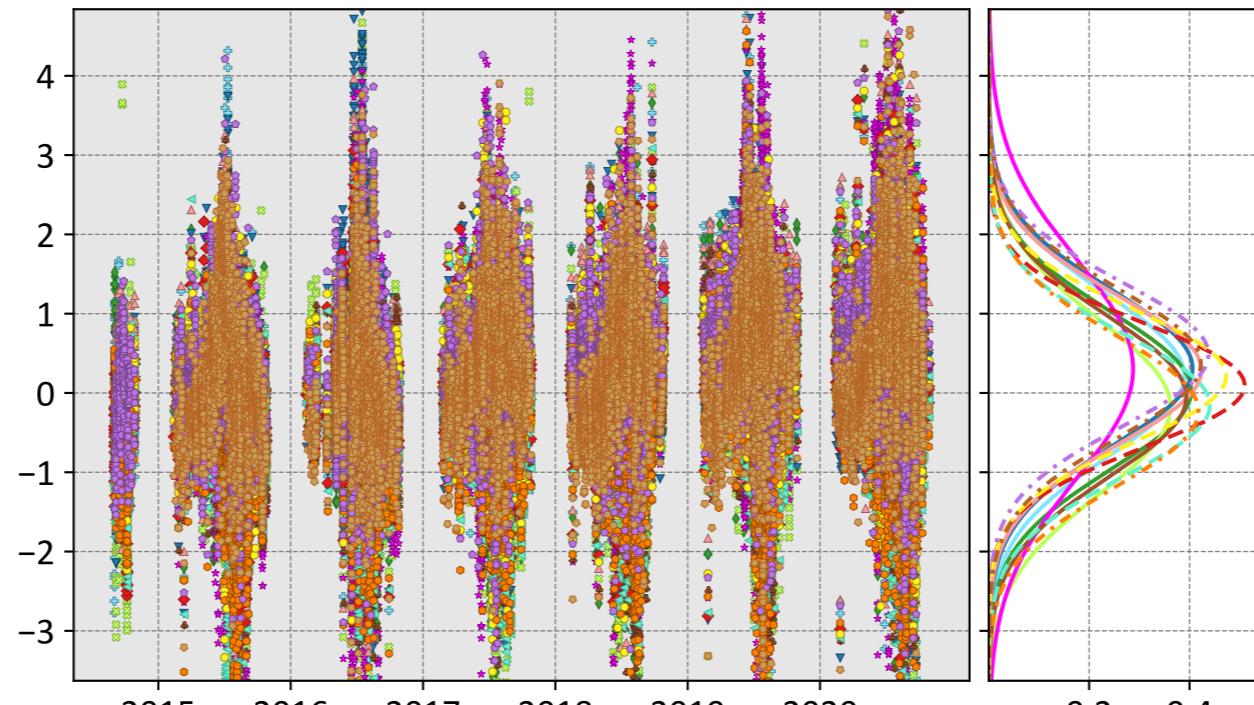
- CSU (0.39, 1.08, 0.08)
- Ames (0.23, 1.00, 0.14)
- COLA (0.12, 1.09, 0.07)
- UT (0.45, 1.12, 0.06)
- CMS-Flux (0.31, 1.22, 0.16)
- WOMBAT (0.56, 1.09, 0.11)
- JHU (0.24, 0.96, 0.10)
- TM5-4DVAR (0.29, 0.82, 0.11)
- OU (0.13, 0.90, 0.12)
- NIES (0.31, 0.93, 0.08)
- Weir (0.20, 0.89, 0.09)
- CAMS (0.57, 1.11, 0.18)
- Baker (0.51, 1.05, 0.10)

prior



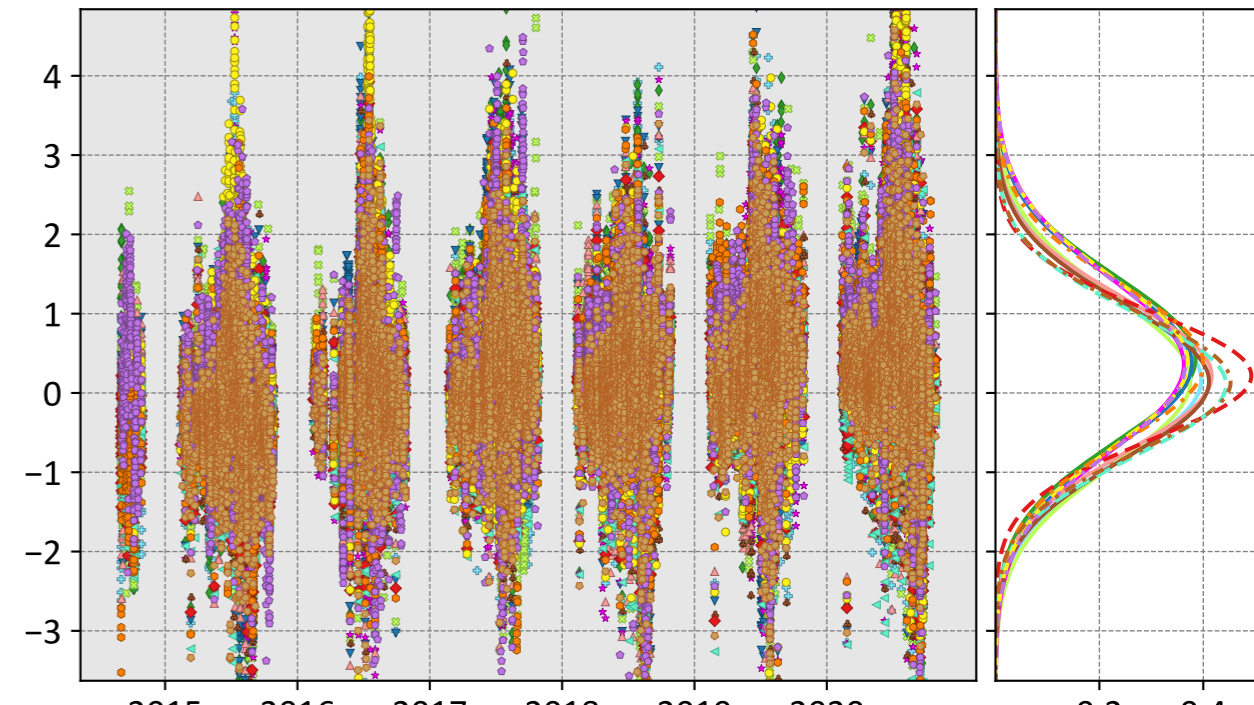
- CSU (1.14, 2.36, 0.07)
- Ames (0.61, 1.33, -0.01)
- COLA (3.56, 3.99, 0.64)
- UT (0.77, 1.66, 0.03)
- CMS-Flux (-0.39, 2.06, -0.55)
- WOMBAT (3.33, 4.18, 0.80)
- JHU (2.42, 2.80, 0.44)
- TM5-4DVAR (-0.88, 1.27, -0.04)
- OU (5.98, 6.72, 1.58)
- NIES (0.66, 1.30, 0.05)
- Weir (0.44, 1.14, -0.11)
- CAMS (3.68, 4.03, 0.64)
- Baker (0.80, 1.44, 0.16)
- CT (0.62, 1.15, 0.12)

IS



- CSU (0.21, 1.05, 0.07)
- Ames (0.03, 0.99, 0.13)
- COLA (-0.18, 1.12, 0.07)
- UT (0.31, 1.03, 0.03)
- CMS-Flux (0.30, 1.42, 0.27)
- WOMBAT (0.29, 0.98, 0.08)
- JHU (-0.05, 1.02, 0.09)
- TM5-4DVAR (0.10, 0.79, 0.10)
- OU (-0.15, 0.92, 0.07)
- NIES (0.37, 1.02, 0.11)
- CT (0.21, 0.87, 0.09)
- CAMS (-0.23, 0.98, 0.07)
- Baker (0.49, 1.03, 0.10)

LNLG



- CSU (0.17, 1.02, 0.05)
- Ames (0.43, 1.12, 0.15)
- COLA (0.16, 1.08, 0.05)
- UT (0.36, 1.12, 0.10)
- CMS-Flux (0.36, 1.16, 0.12)
- WOMBAT (0.21, 0.98, 0.06)
- JHU (0.15, 0.98, 0.10)
- TM5-4DVAR (0.22, 0.84, 0.10)
- OU (0.11, 0.91, 0.06)
- NIES (0.14, 0.89, 0.13)
- CT (0.38, 1.14, 0.05)
- CAMS (0.37, 1.06, 0.17)
- Baker (0.35, 1.15, 0.11)

Model - TCCON XCO<sub>2</sub> (ppm)