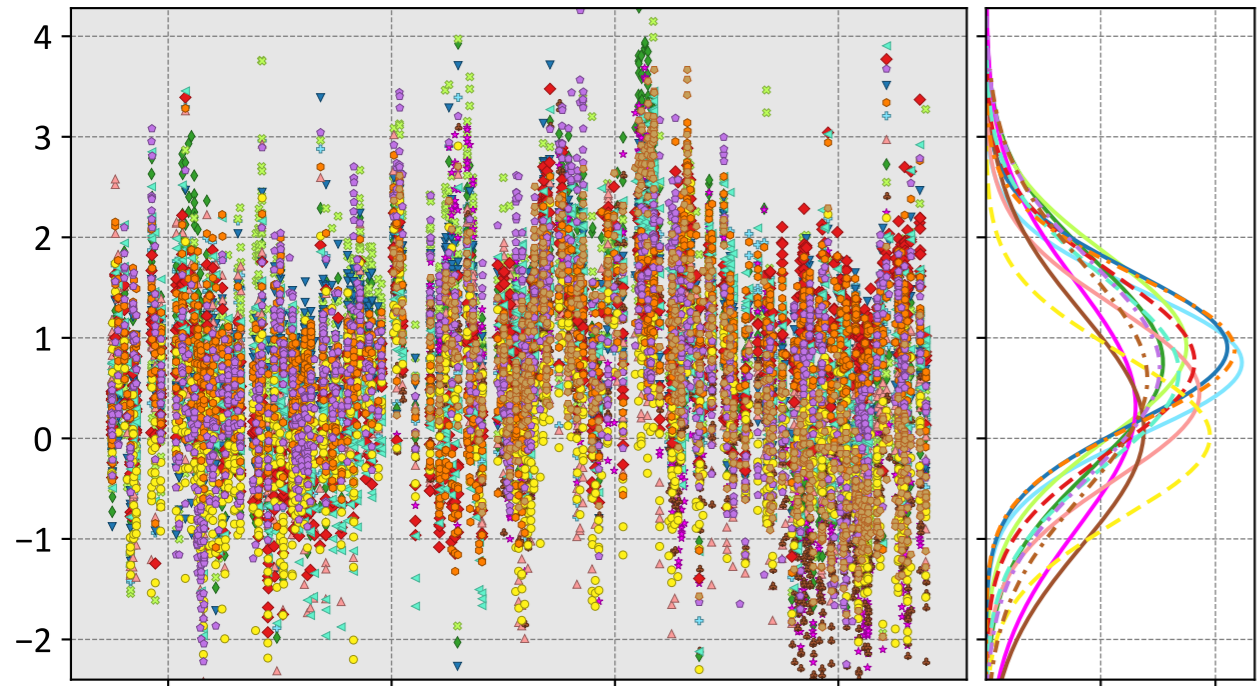


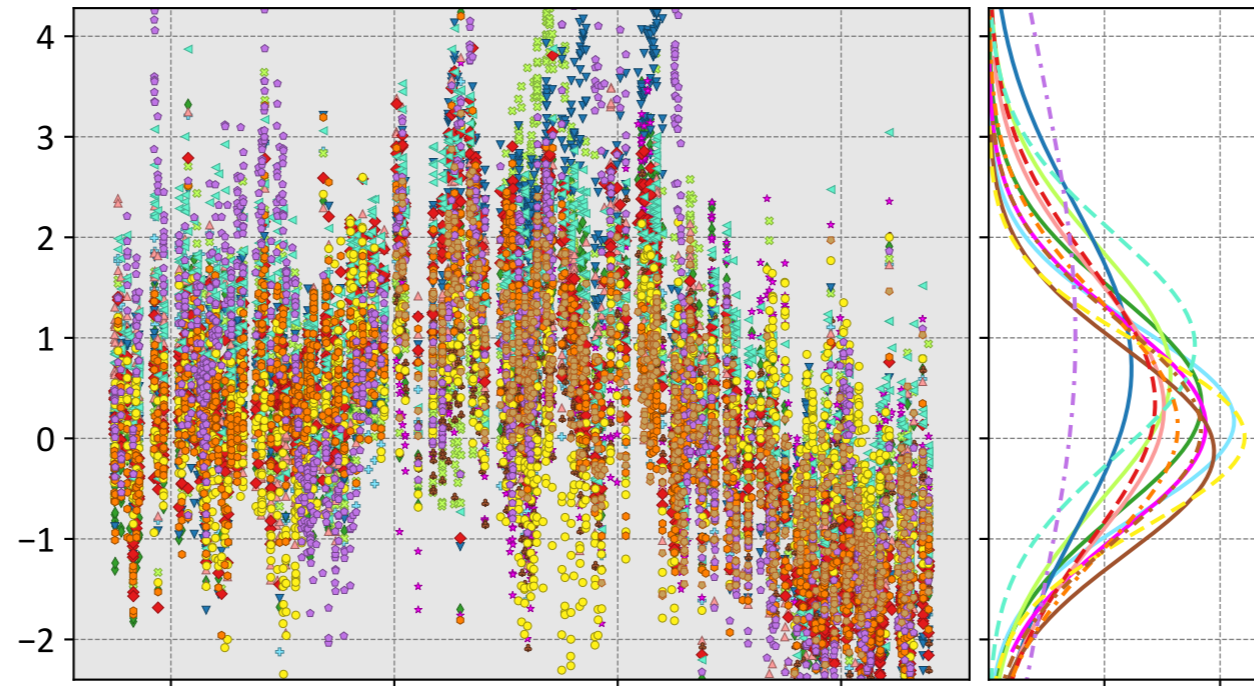
Manaus, Amazonas, Brazil

LNLGIS



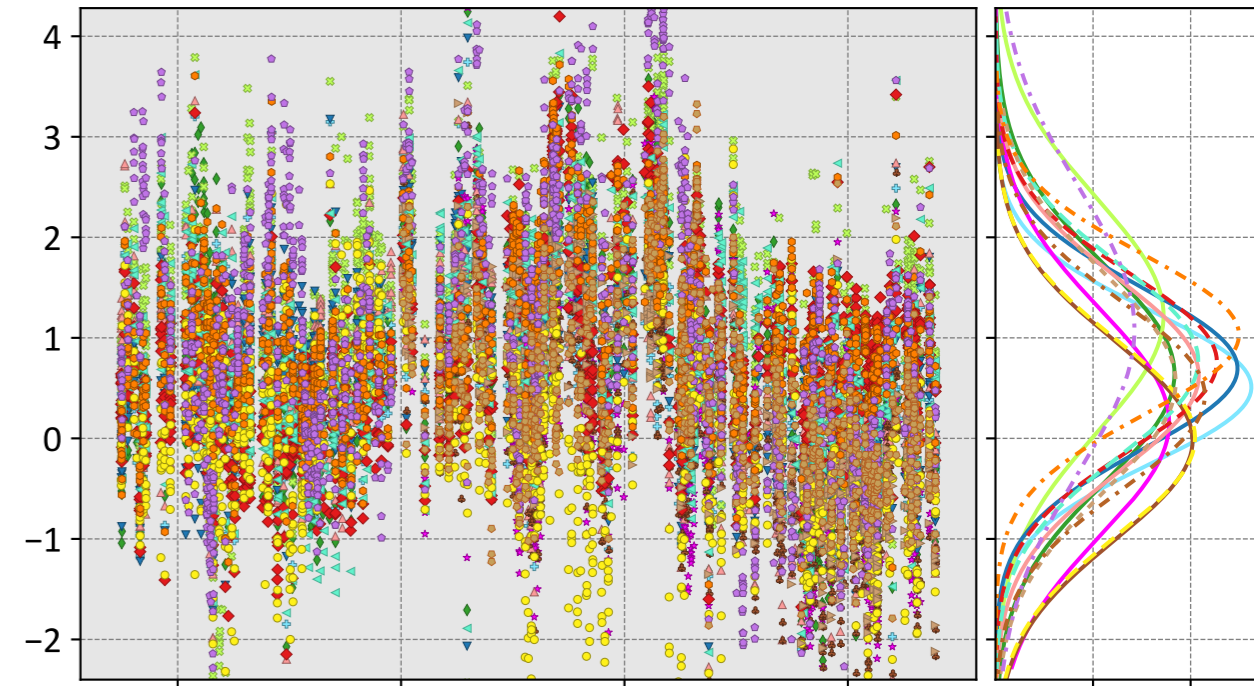
- CSU (0.75, 1.04, 0.50)
- Ames (0.75, 1.28, -0.39)
- COLA (0.91, 1.29, -0.42)
- UT (0.90, 1.18, 0.66)
- CMS-Flux (0.32, 1.26, -5.42)
- WOMBAT (0.45, 0.97, -0.18)
- JHU (0.09, 1.16, -5.09)
- TM5-4DVAR (0.76, 1.16, 1.88)
- OU (0.66, 1.16, 0.87)
- NIES (0.59, 1.28, -4.61)
- CT (0.02, 0.82, -0.05)
- CAMS (0.88, 1.15, 0.84)
- Baker (0.70, 1.27, 0.19)

OG



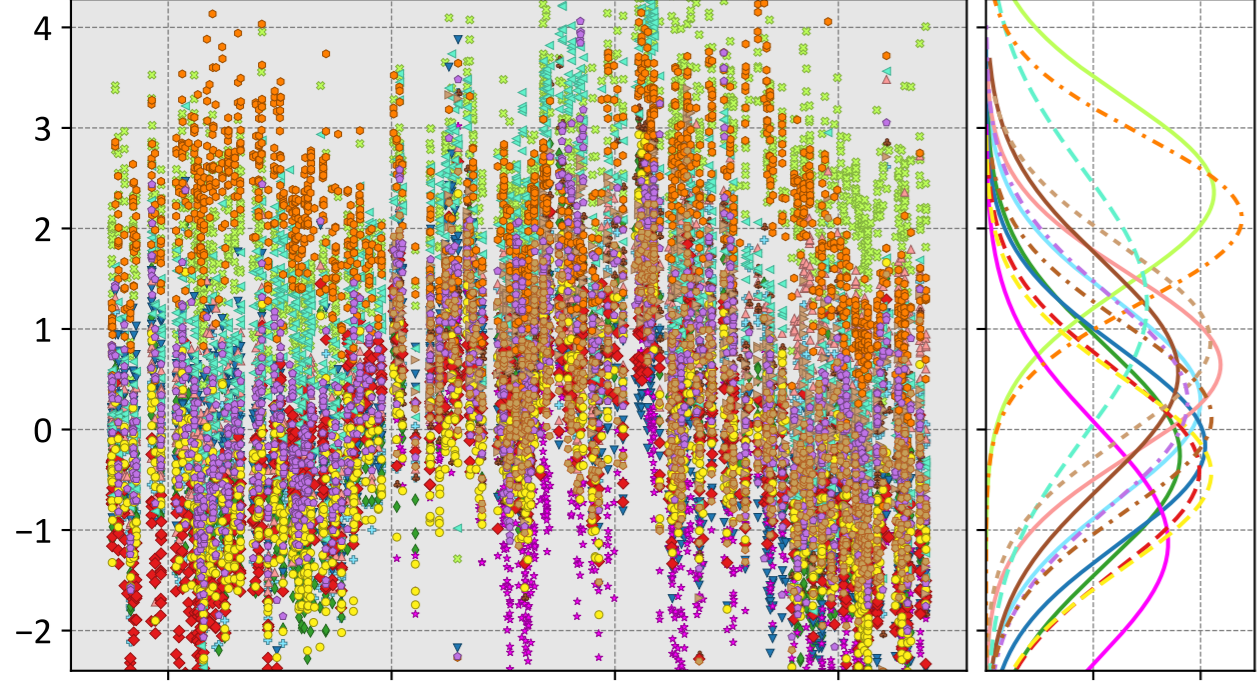
- CSU (0.17, 0.96, -2.32)
- Ames (0.35, 1.14, -1.06)
- COLA (0.63, 1.42, -1.59)
- UT (0.69, 1.76, -2.19)
- CMS-Flux (0.13, 1.07, -2.72)
- WOMBAT (0.30, 1.35, -2.84)
- JHU (-0.13, 1.03, -4.63)
- TM5-4DVAR (0.35, 1.43, -2.79)
- OU (0.92, 1.45, -2.17)
- NIES (0.09, 1.09, -6.30)
- CT (0.01, 0.90, -0.60)
- CAMS (0.12, 1.23, -2.90)
- Baker (1.01, 2.85, -2.62)

LNLGOGIS



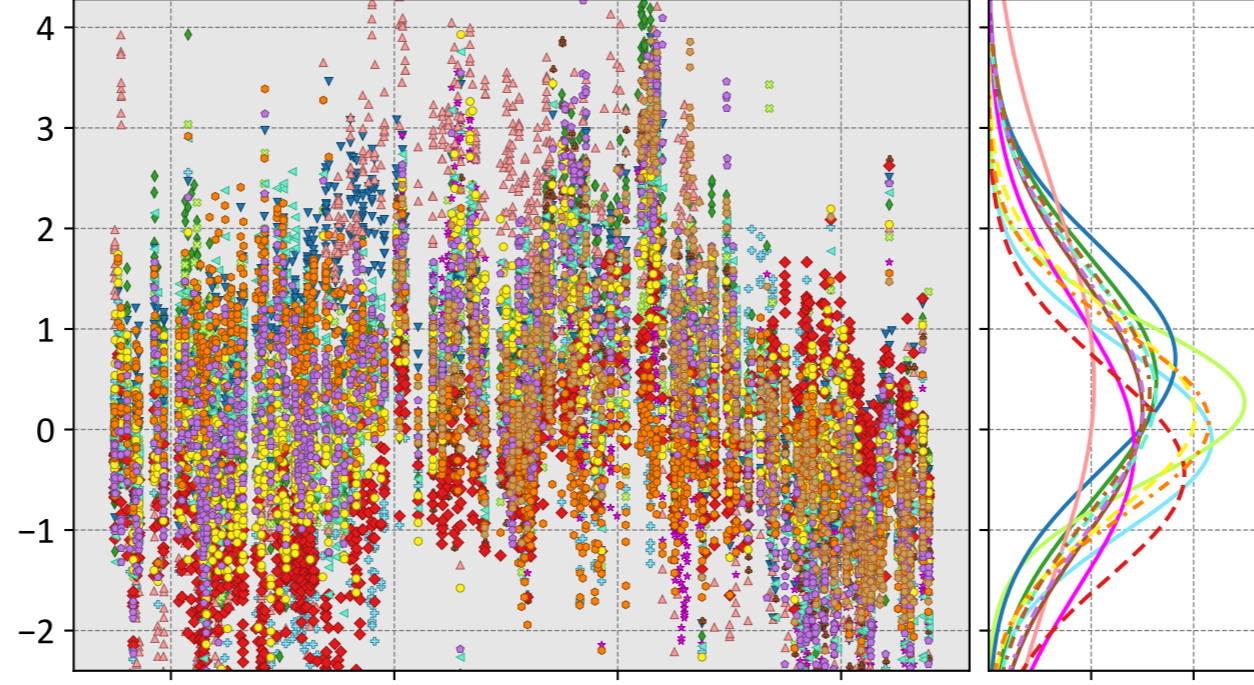
- CSU (0.51, 0.92, -1.03)
- Ames (0.64, 1.26, -1.06)
- COLA (1.22, 1.68, 0.54)
- UT (0.69, 1.06, -0.56)
- CMS-Flux (0.16, 1.13, -4.16)
- WOMBAT (0.62, 1.14, -1.14)
- JHU (-0.02, 0.99, -4.41)
- TM5-4DVAR (0.76, 1.16, 1.23)
- OU (0.77, 1.23, -0.19)
- NIES (0.43, 1.02, -2.59)
- Weir (0.56, 1.22, -5.51)
- CAMS (1.03, 1.30, 0.25)
- Baker (1.08, 1.77, -0.97)
- CT (0.00, 0.98, -1.03)

prior



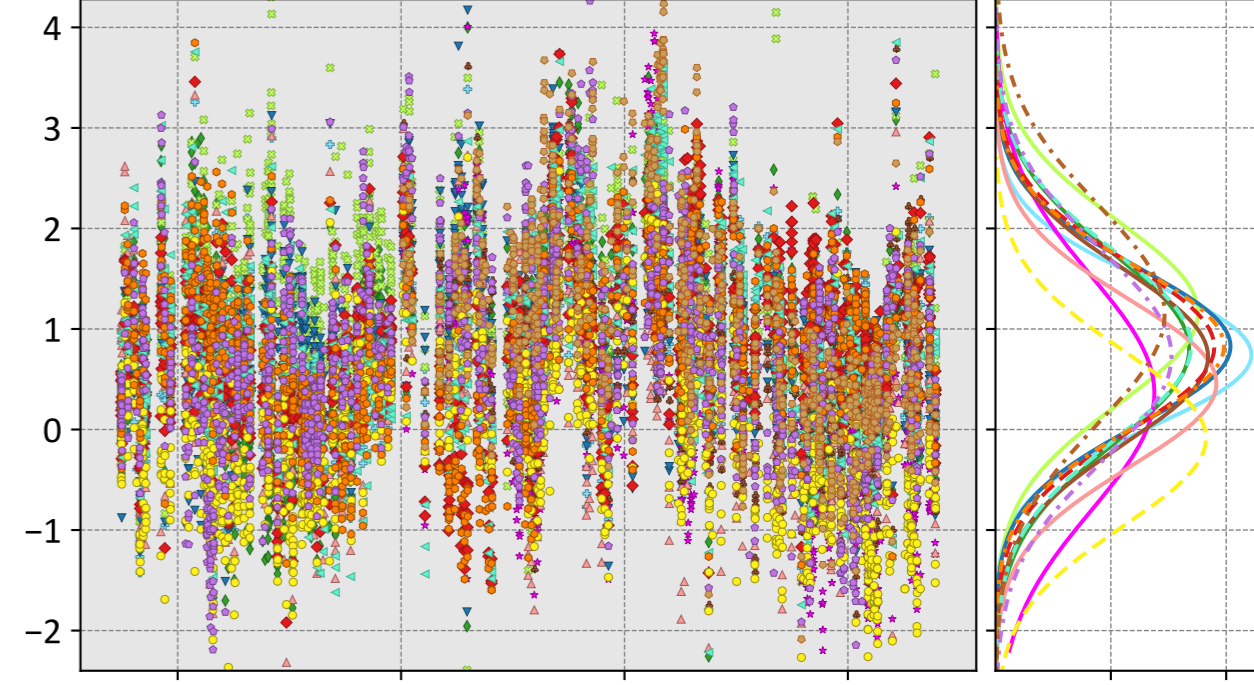
- CSU (0.29, 1.04, 1.74)
- Ames (-0.26, 1.13, -0.01)
- COLA (2.36, 2.54, 1.68)
- UT (-0.16, 0.99, -2.15)
- CMS-Flux (-1.13, 1.63, -5.04)
- WOMBAT (0.64, 1.12, 2.16)
- JHU (0.56, 1.25, -3.84)
- TM5-4DVAR (-0.41, 1.08, 0.38)
- OU (1.25, 1.82, 0.12)
- NIES (0.12, 0.96, -4.26)
- Weir (0.87, 1.29, -3.78)
- CAMS (2.10, 2.26, -0.74)
- Baker (0.28, 1.10, 0.17)
- CT (-0.43, 1.04, 0.11)

IS



- CSU (-0.11, 0.92, 0.86)
- Ames (0.49, 1.31, -0.31)
- COLA (0.27, 0.84, -0.88)
- UT (0.70, 1.30, -1.61)
- CMS-Flux (-0.19, 1.42, -7.50)
- WOMBAT (0.45, 1.99, -0.24)
- JHU (0.20, 1.34, -5.11)
- TM5-4DVAR (-0.44, 1.13, 2.91)
- OU (0.35, 1.27, -1.73)
- NIES (0.38, 1.33, -4.75)
- CT (0.14, 1.00, 0.19)
- CAMS (0.06, 0.93, -2.96)
- Baker (0.24, 1.34, -0.78)

LNLG



- CSU (0.74, 1.03, 0.57)
- Ames (0.80, 1.24, 0.54)
- COLA (1.16, 1.48, -0.77)
- UT (0.83, 1.14, 0.06)
- CMS-Flux (0.36, 1.21, -4.01)
- WOMBAT (0.46, 0.95, -0.40)
- JHU (0.72, 1.13, -2.43)
- TM5-4DVAR (0.82, 1.17, 1.24)
- OU (0.83, 1.26, 0.18)
- NIES (1.15, 1.58, -3.94)
- CT (-0.09, 0.88, -0.48)
- CAMS (0.83, 1.16, 0.62)
- Baker (0.73, 1.28, 0.18)

Model - TCCON XCO₂ (ppm)