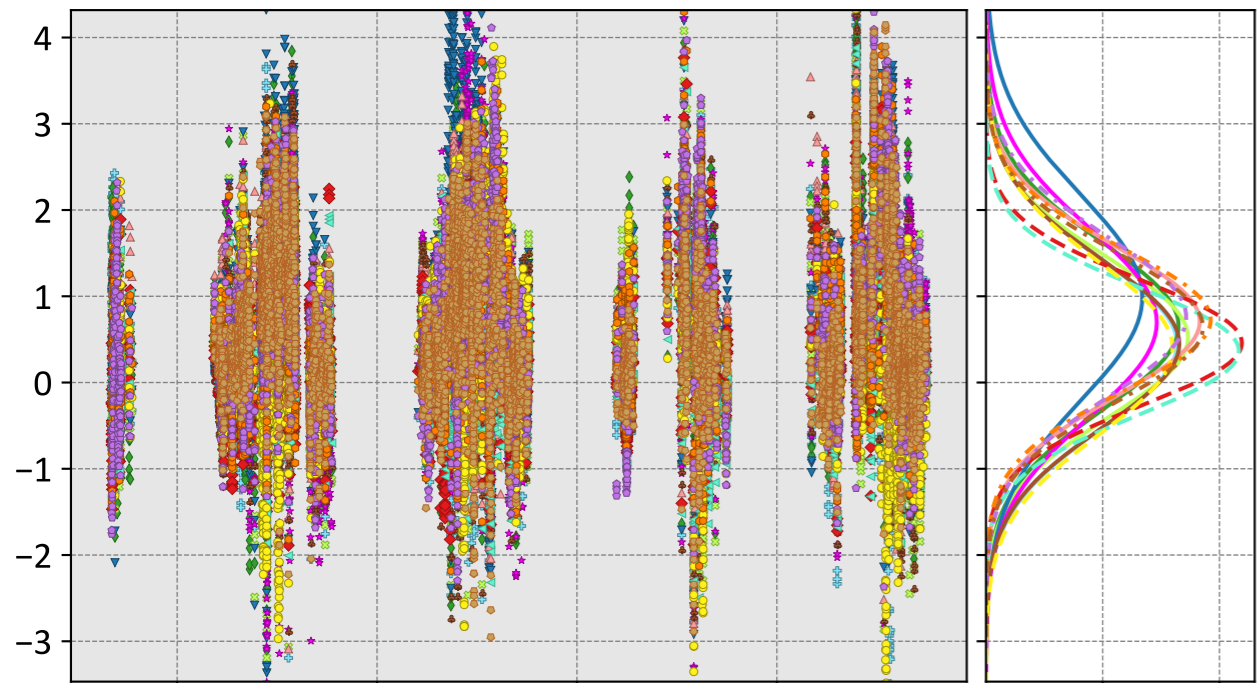


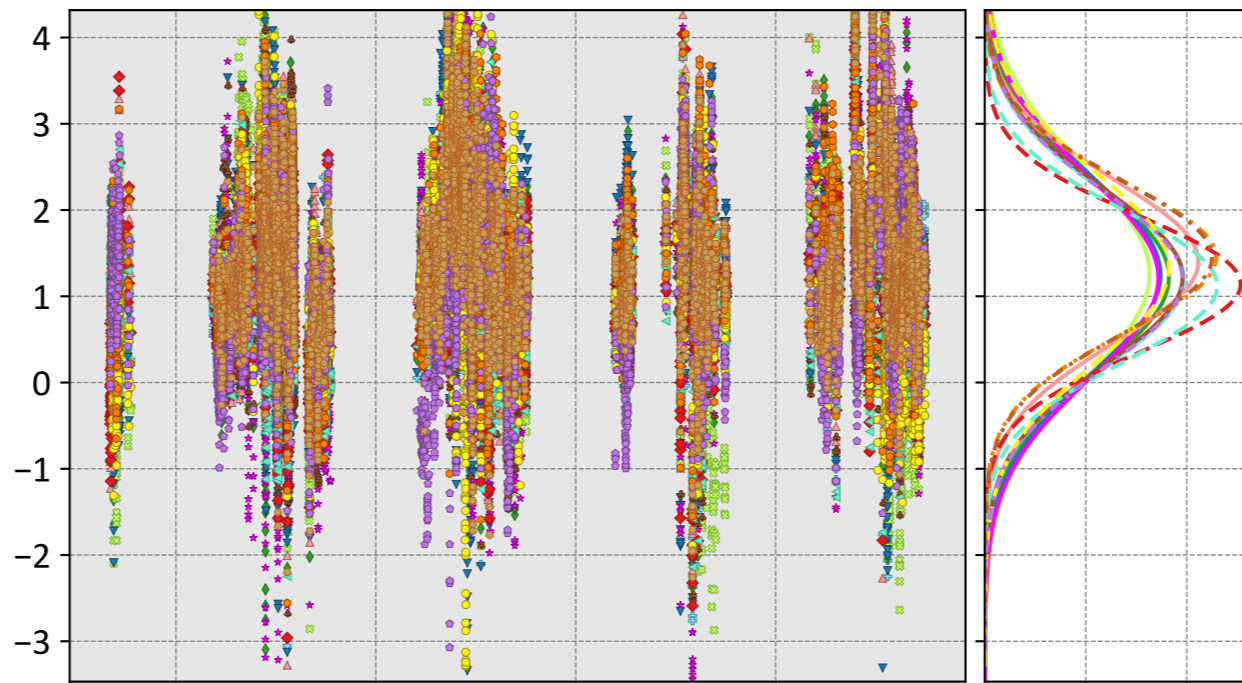
Białystok, Podlasie, Poland

LNLGIS



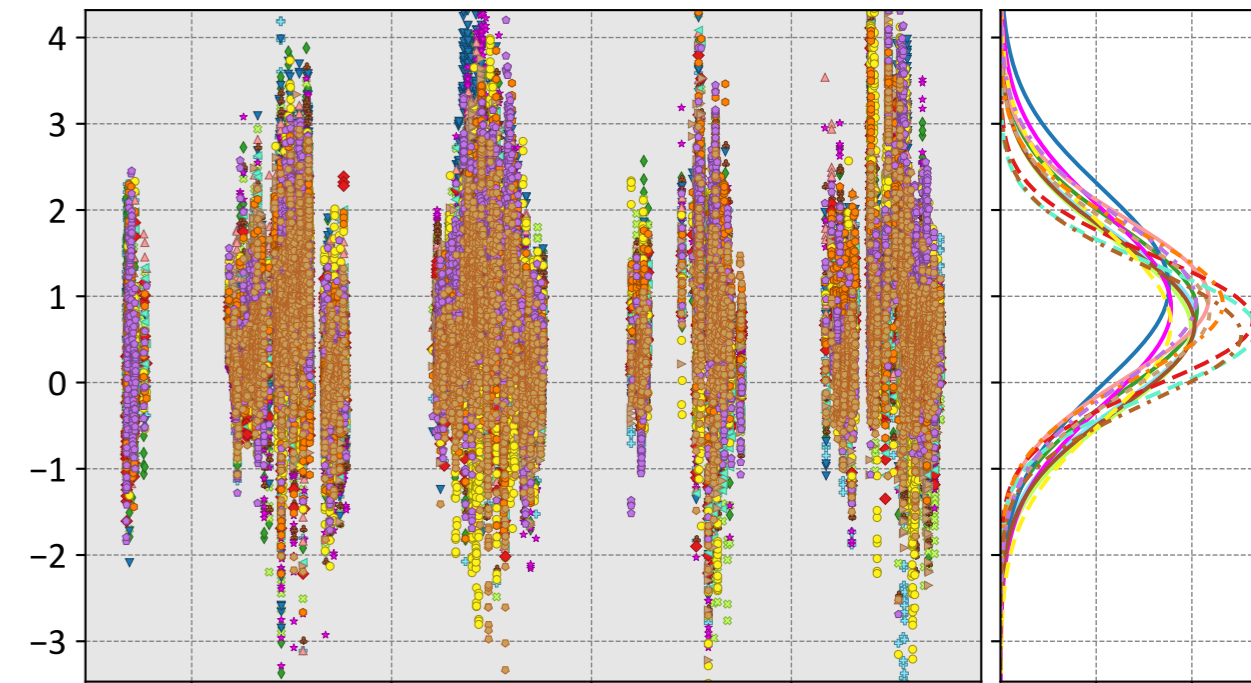
- CSU (0.45, 1.07, -0.06)
- Ames (0.65, 1.17, 0.01)
- COLA (0.52, 1.06, -0.03)
- UT (0.98, 1.55, -0.17)
- CMS-Flux (0.70, 1.29, 0.09)
- WOMBAT (0.71, 1.12, -0.05)
- JHU (0.45, 1.06, -0.05)
- TM5-4DVAR (0.46, 0.86, -0.03)
- OU (0.37, 0.82, -0.05)
- NIES (0.64, 1.07, -0.08)
- CT (0.40, 1.07, -0.13)
- CAMS (0.73, 1.10, 0.08)
- Baker (0.76, 1.20, 0.07)

OG



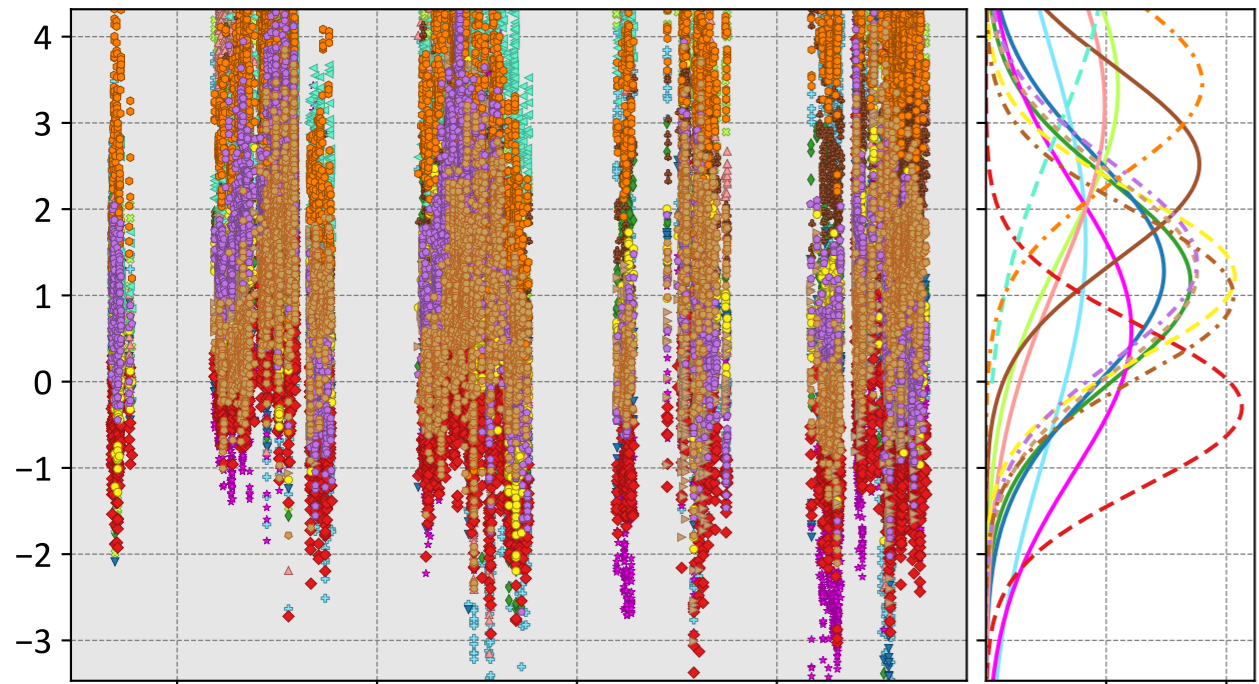
- CSU (1.19, 1.56, -0.01)
- Ames (1.22, 1.64, -0.00)
- COLA (1.26, 1.75, -0.20)
- UT (1.25, 1.69, 0.05)
- CMS-Flux (1.21, 1.68, 0.13)
- WOMBAT (1.41, 1.69, 0.05)
- JHU (1.22, 1.59, 0.00)
- TM5-4DVAR (1.14, 1.39, 0.01)
- OU (1.12, 1.42, 0.03)
- NIES (1.45, 1.70, 0.02)
- CT (1.34, 1.73, -0.11)
- CAMS (1.45, 1.69, 0.11)
- Baker (1.19, 1.57, 0.11)

LNLGOGIS



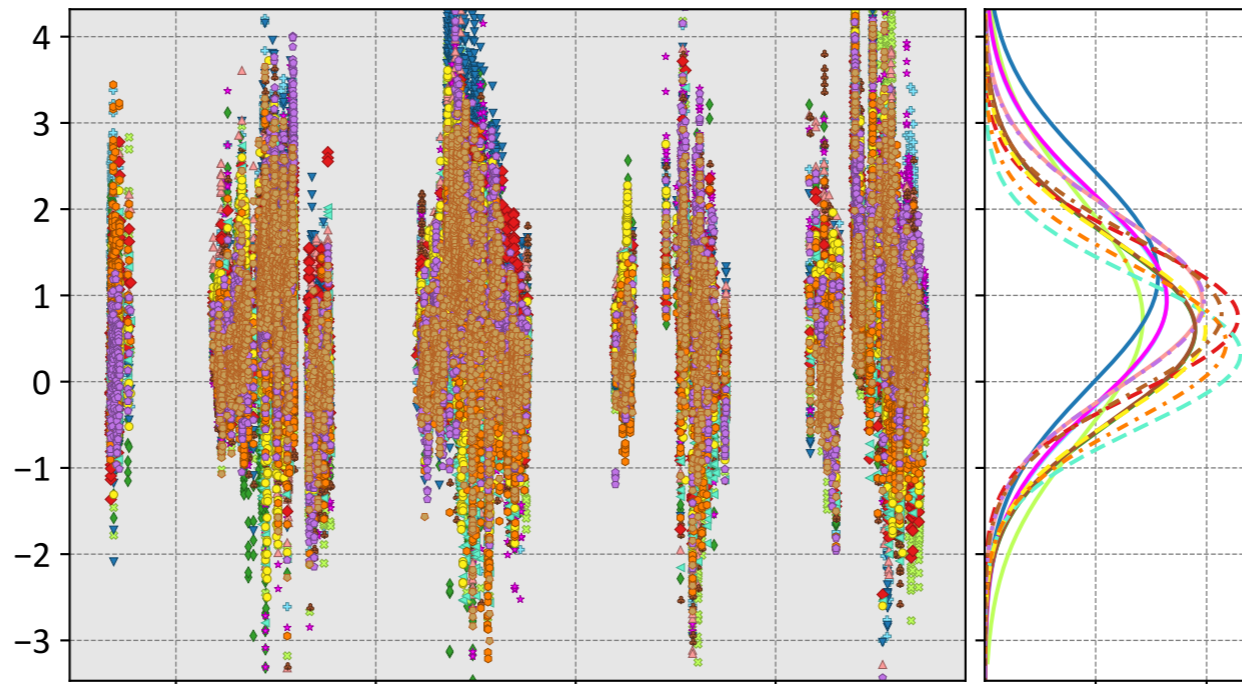
- CSU (0.71, 1.21, -0.06)
- Ames (0.84, 1.29, -0.02)
- COLA (0.63, 1.18, -0.12)
- UT (1.11, 1.59, -0.06)
- CMS-Flux (0.87, 1.42, 0.05)
- WOMBAT (0.97, 1.34, 0.00)
- JHU (0.67, 1.19, -0.05)
- TM5-4DVAR (0.72, 1.04, 0.02)
- OU (0.61, 0.97, -0.07)
- NIES (0.55, 0.97, -0.02)
- Weir (0.81, 1.22, -0.15)
- CAMS (0.91, 1.25, 0.13)
- Baker (0.94, 1.36, 0.12)

prior



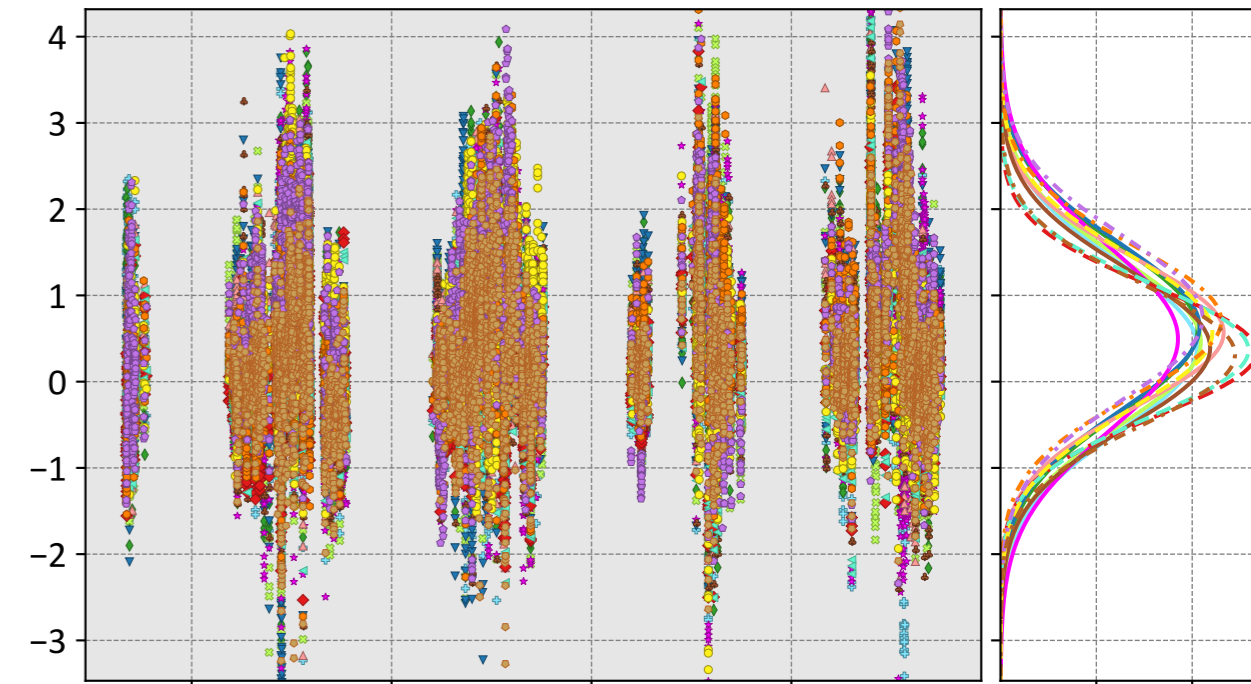
- CSU (1.62, 2.90, -0.53)
- Ames (1.16, 1.65, -0.13)
- COLA (3.40, 3.86, 0.21)
- UT (1.28, 1.86, -0.09)
- CMS-Flux (0.60, 1.75, -0.50)
- WOMBAT (3.20, 3.79, 0.31)
- JHU (2.52, 2.76, 0.04)
- TM5-4DVAR (-0.30, 0.98, -0.29)
- OU (4.93, 5.34, 1.34)
- NIES (1.00, 1.39, 0.07)
- Weir (1.25, 1.69, -0.53)
- CAMS (3.46, 3.63, 0.27)
- Baker (1.38, 1.79, -0.25)
- CT (1.22, 1.55, -0.12)

IS



- CSU (0.93, 1.53, -0.14)
- Ames (0.59, 1.21, 0.02)
- COLA (0.73, 1.58, 0.12)
- UT (1.22, 1.77, -0.19)
- CMS-Flux (0.94, 1.54, 0.22)
- WOMBAT (0.93, 1.38, -0.04)
- JHU (0.61, 1.21, -0.02)
- TM5-4DVAR (0.74, 1.15, -0.17)
- OU (0.33, 0.92, -0.08)
- NIES (0.78, 1.22, -0.01)
- CT (0.60, 1.17, -0.07)
- CAMS (0.45, 1.02, -0.02)
- Baker (0.93, 1.37, 0.10)

LNLG



- CSU (0.40, 1.05, -0.05)
- Ames (0.60, 1.14, 0.04)
- COLA (0.46, 1.06, 0.02)
- UT (0.63, 1.15, 0.10)
- CMS-Flux (0.50, 1.19, -0.03)
- WOMBAT (0.57, 1.03, -0.01)
- JHU (0.39, 0.99, 0.01)
- TM5-4DVAR (0.34, 0.82, 0.03)
- OU (0.37, 0.85, -0.01)
- NIES (0.31, 0.87, 0.11)
- CT (0.57, 1.07, -0.20)
- CAMS (0.71, 1.12, 0.15)
- Baker (0.74, 1.20, 0.02)

Model - TCCON XCO<sub>2</sub> (ppm)