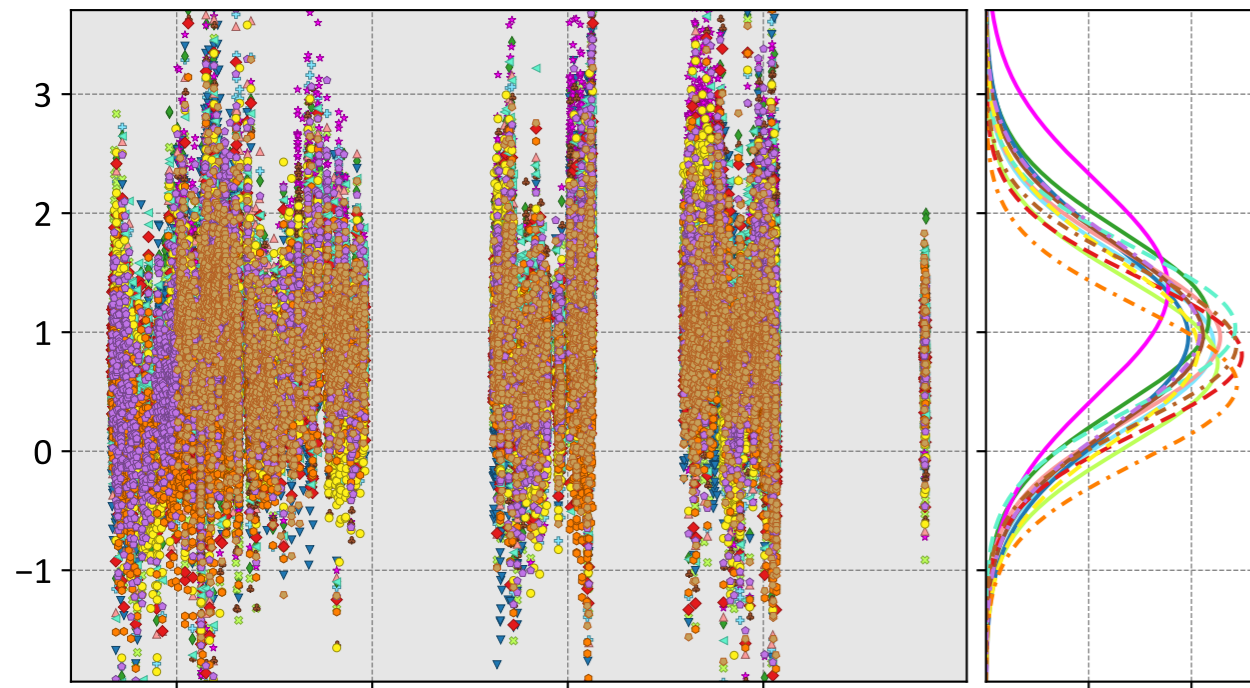


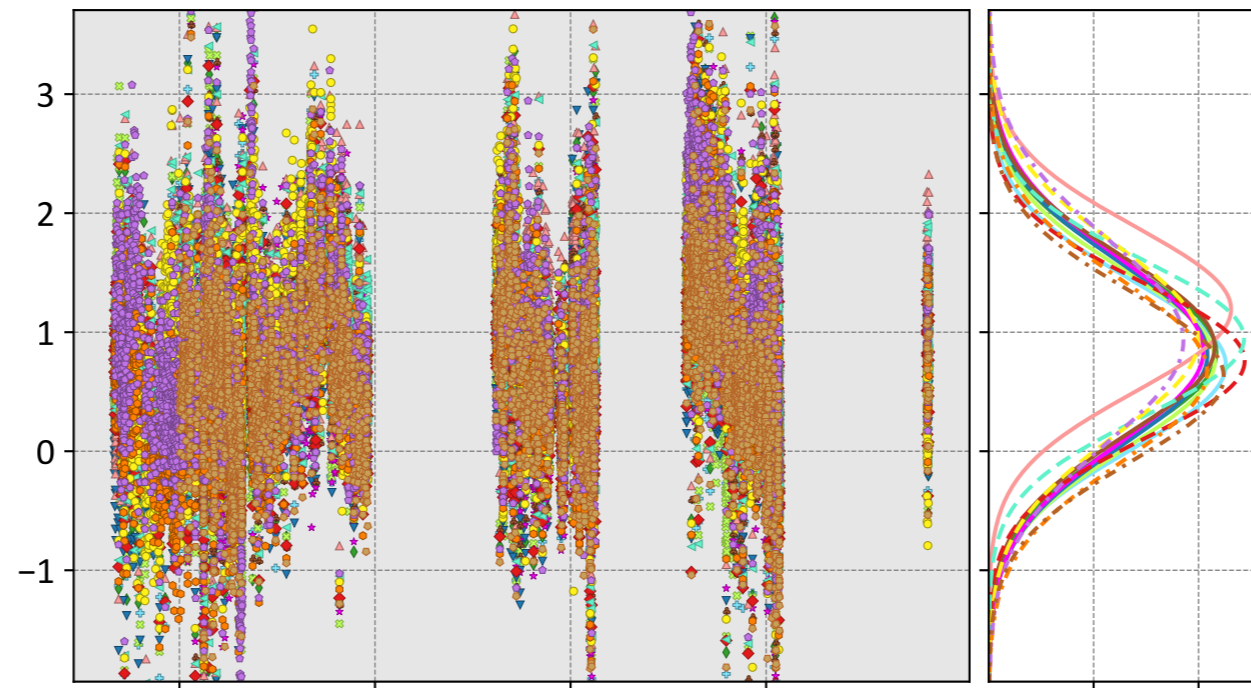
# Ascension Island, UK

## LNLGIS



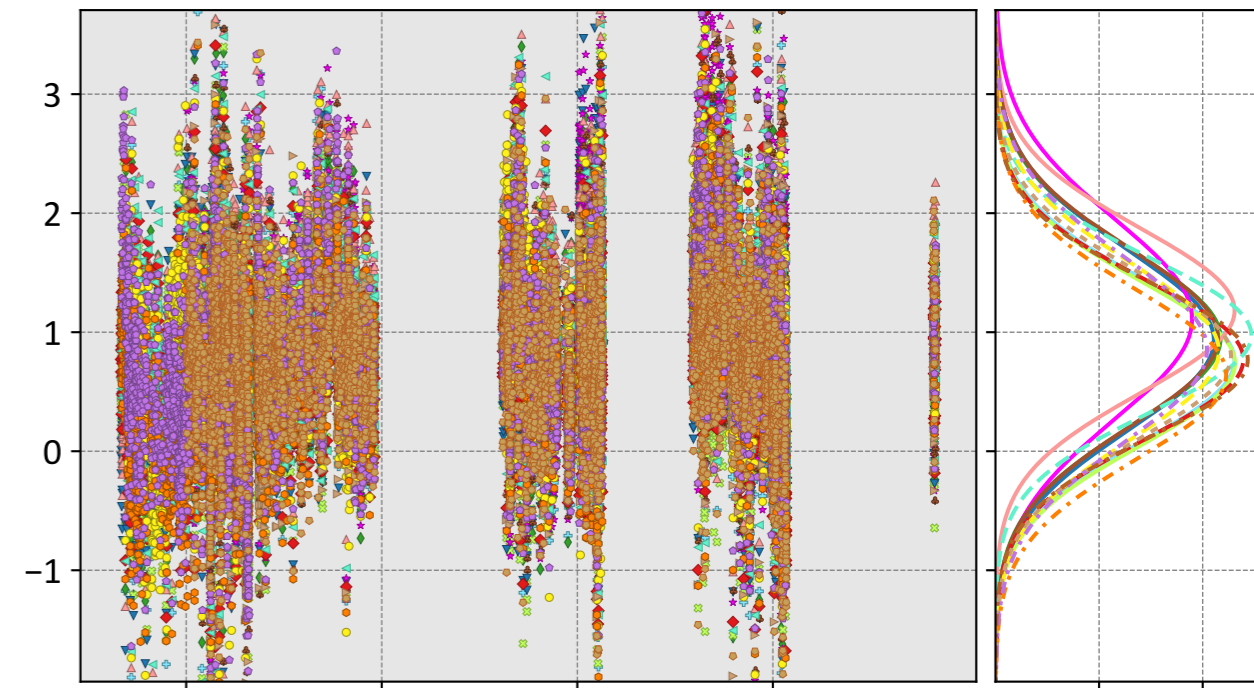
- CSU (0.90, 1.15, -0.01)
- Ames (1.11, 1.33, 0.16)
- COLA (0.74, 1.03, 0.06)
- UT (0.96, 1.26, 0.08)
- CMS-Flux (1.37, 1.64, 0.16)
- WOMBAT (0.96, 1.19, 0.08)
- JHU (0.97, 1.23, 0.15)
- TM5-4DVAR (0.81, 1.03, 0.10)
- OU (1.04, 1.23, 0.13)
- NIES (0.89, 1.10, -0.01)
- CT (0.86, 1.16, 0.10)
- CAMS (0.56, 0.86, 0.15)
- Baker (1.00, 1.26, 0.11)

## OG



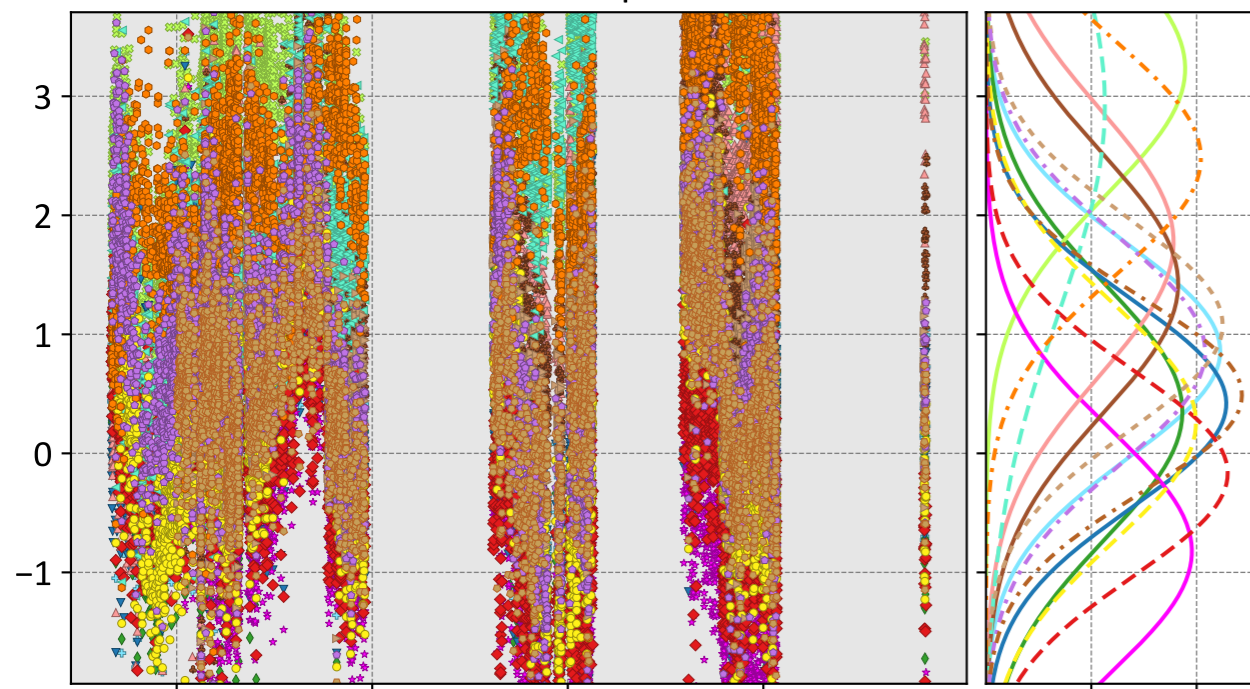
- CSU (0.73, 1.01, 0.07)
- Ames (0.83, 1.11, 0.15)
- COLA (0.77, 1.07, 0.03)
- UT (0.81, 1.12, 0.16)
- CMS-Flux (0.84, 1.15, 0.12)
- WOMBAT (1.19, 1.38, 0.15)
- JHU (0.88, 1.15, 0.13)
- TM5-4DVAR (0.76, 1.00, 0.09)
- OU (0.95, 1.15, 0.08)
- NIES (0.63, 0.95, 0.04)
- CT (0.94, 1.23, 0.14)
- CAMS (0.67, 1.02, 0.22)
- Baker (0.93, 1.27, 0.16)

## LNLGOGIS



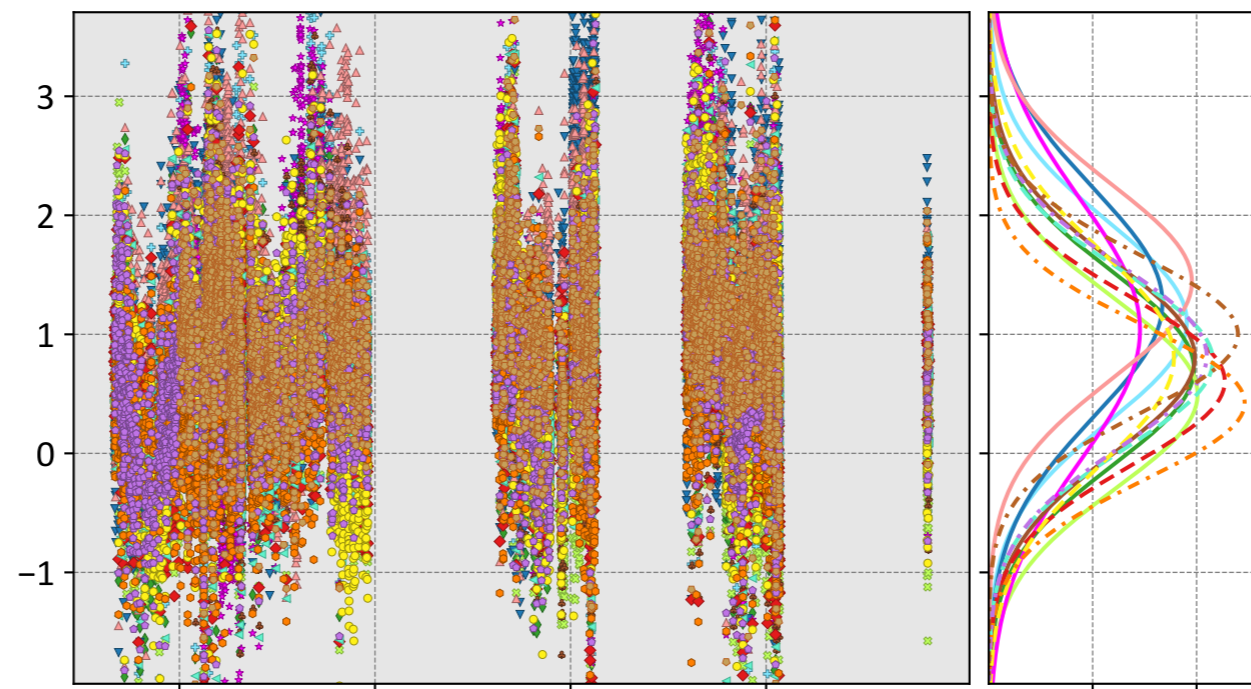
- CSU (0.76, 1.03, 0.06)
- Ames (0.95, 1.20, 0.14)
- COLA (0.74, 1.01, 0.05)
- UT (0.93, 1.20, 0.18)
- CMS-Flux (1.11, 1.39, 0.20)
- WOMBAT (1.18, 1.37, 0.14)
- JHU (0.95, 1.21, 0.14)
- TM5-4DVAR (0.77, 1.02, 0.12)
- OU (0.97, 1.17, 0.12)
- NIES (0.77, 1.01, 0.01)
- Weir (0.80, 1.07, 0.11)
- CAMS (0.65, 0.96, 0.22)
- Baker (0.85, 1.16, 0.13)

## prior



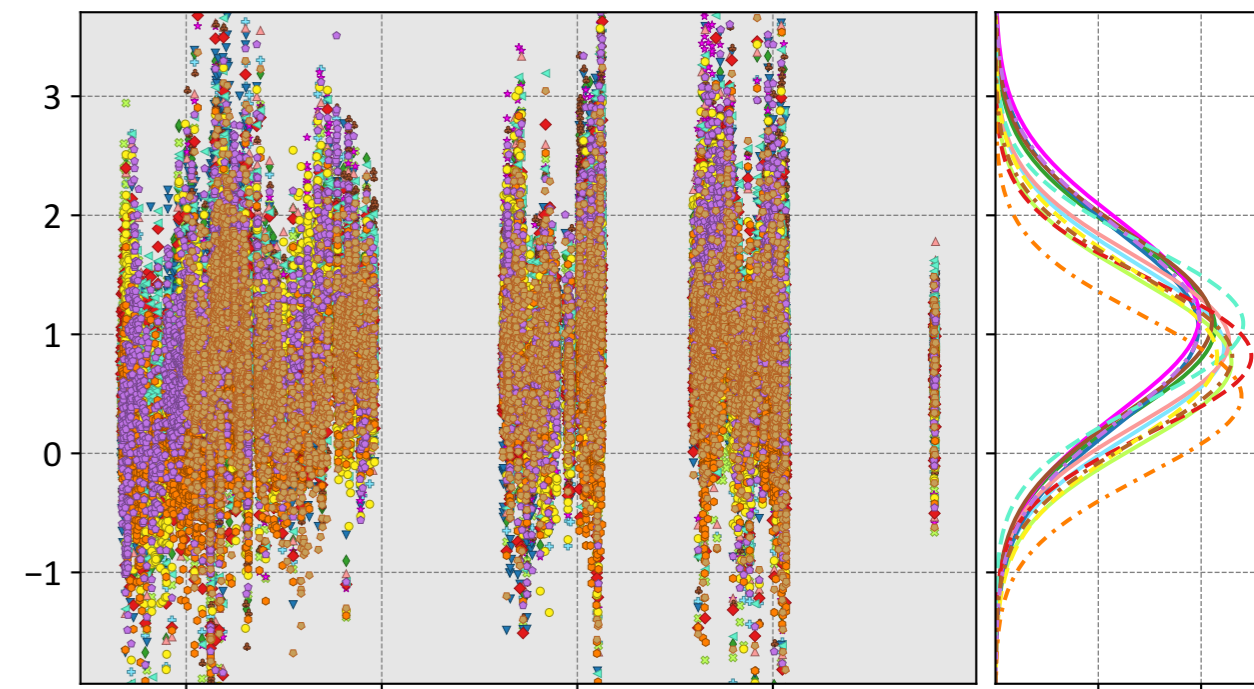
- CSU (0.86, 1.24, -0.07)
- Ames (0.35, 1.13, 0.10)
- COLA (3.23, 3.40, 0.52)
- UT (0.42, 0.97, -0.03)
- CMS-Flux (-0.82, 1.31, -0.45)
- WOMBAT (1.77, 2.10, 0.62)
- JHU (1.42, 1.80, 0.22)
- TM5-4DVAR (-0.17, 0.89, -0.26)
- OU (2.93, 3.42, 1.33)
- NIES (0.49, 0.96, 0.03)
- Weir (1.08, 1.40, 0.09)
- CAMS (2.48, 2.67, 0.47)
- Baker (0.85, 1.28, -0.13)
- CT (0.26, 1.03, 0.03)

## IS



- CSU (1.10, 1.39, 0.04)
- Ames (0.71, 1.08, 0.04)
- COLA (0.50, 0.94, -0.10)
- UT (1.26, 1.58, 0.18)
- CMS-Flux (1.04, 1.51, 0.22)
- WOMBAT (1.44, 1.66, 0.04)
- JHU (0.81, 1.14, -0.13)
- TM5-4DVAR (0.61, 0.93, 0.03)
- OU (0.78, 1.08, 0.17)
- NIES (1.00, 1.20, 0.05)
- CT (0.80, 1.20, 0.04)
- CAMS (0.42, 0.77, 0.12)
- Baker (0.82, 1.12, 0.04)

## LNLG



- CSU (0.89, 1.14, -0.02)
- Ames (1.06, 1.30, 0.13)
- COLA (0.76, 1.03, 0.03)
- UT (1.05, 1.33, 0.09)
- CMS-Flux (1.15, 1.41, 0.10)
- WOMBAT (0.94, 1.18, 0.09)
- JHU (1.11, 1.34, 0.09)
- TM5-4DVAR (0.82, 1.04, 0.08)
- OU (1.09, 1.28, 0.11)
- NIES (0.81, 1.07, 0.02)
- CT (0.82, 1.10, 0.12)
- CAMS (0.48, 0.82, 0.14)
- Baker (1.08, 1.35, 0.16)

Model - TCCON XCO<sub>2</sub> (ppm)