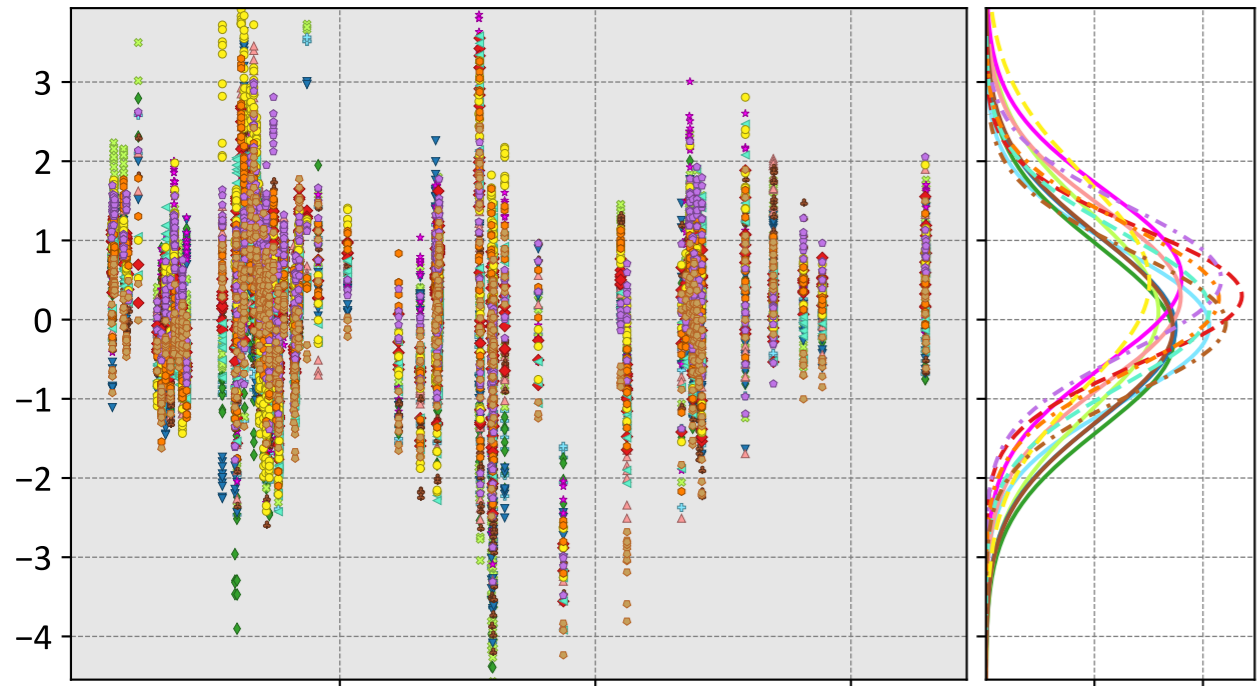


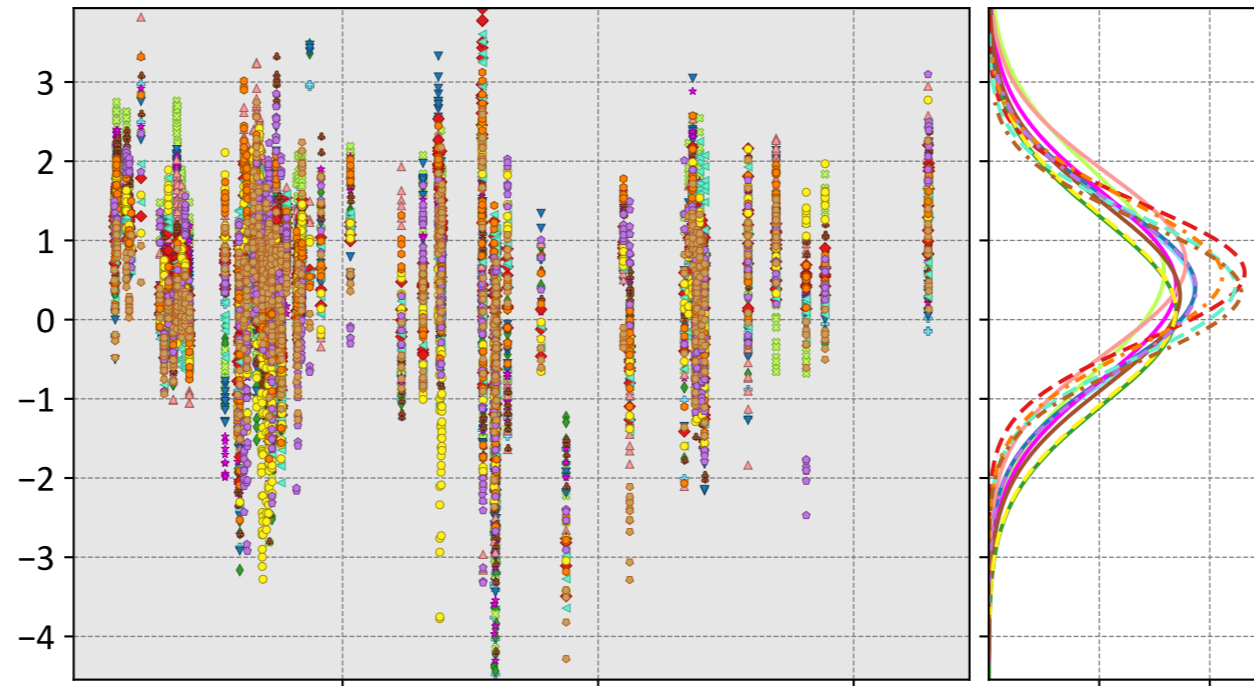
Anmyeondo, Chungnam, Republic of Korea

LNLGIS



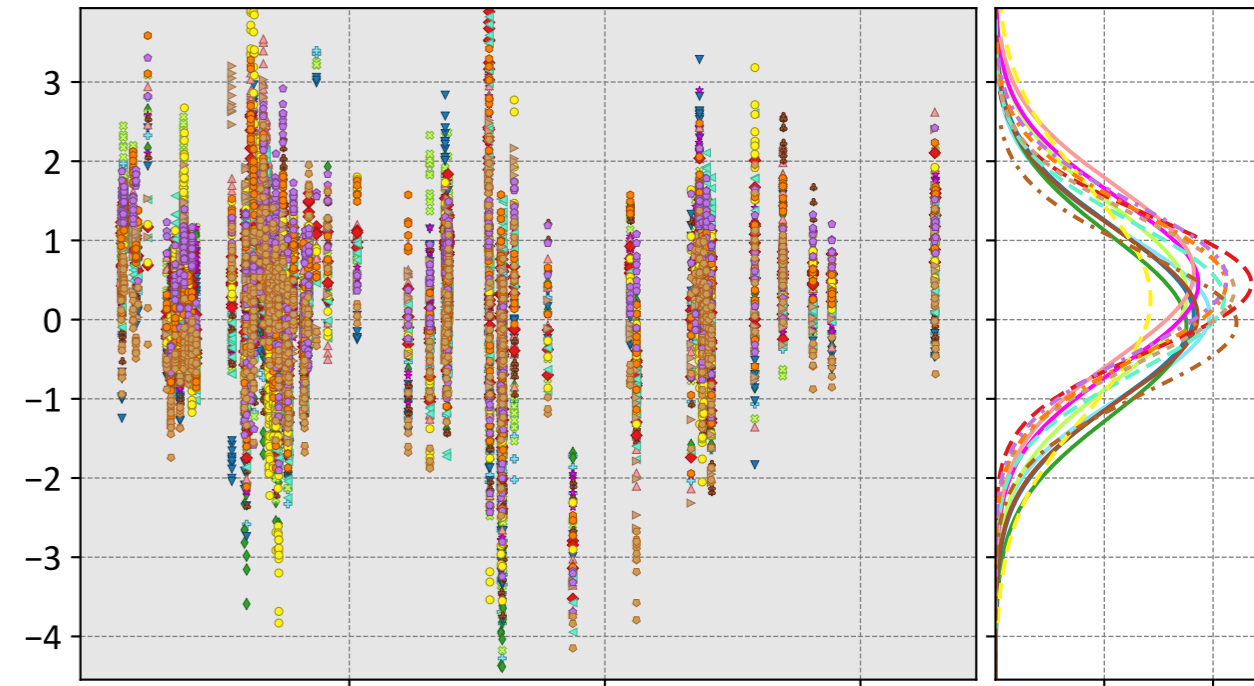
- CSU (-0.08, 0.97, -0.21)
- Ames (-0.23, 1.17, -0.20)
- COLA (0.10, 1.26, -0.12)
- UT (-0.11, 1.15, -0.31)
- CMS-Flux (0.53, 1.23, 0.03)
- WOMBAT (0.29, 1.15, -0.18)
- JHU (-0.10, 1.16, -0.19)
- TM5-4DVAR (0.30, 0.90, -0.10)
- OU (0.13, 0.98, 0.01)
- NIES (-0.04, 0.90, -0.16)
- CT (0.47, 1.40, -0.10)
- CAMS (0.27, 0.97, -0.06)
- Baker (0.51, 1.05, -0.15)

OG



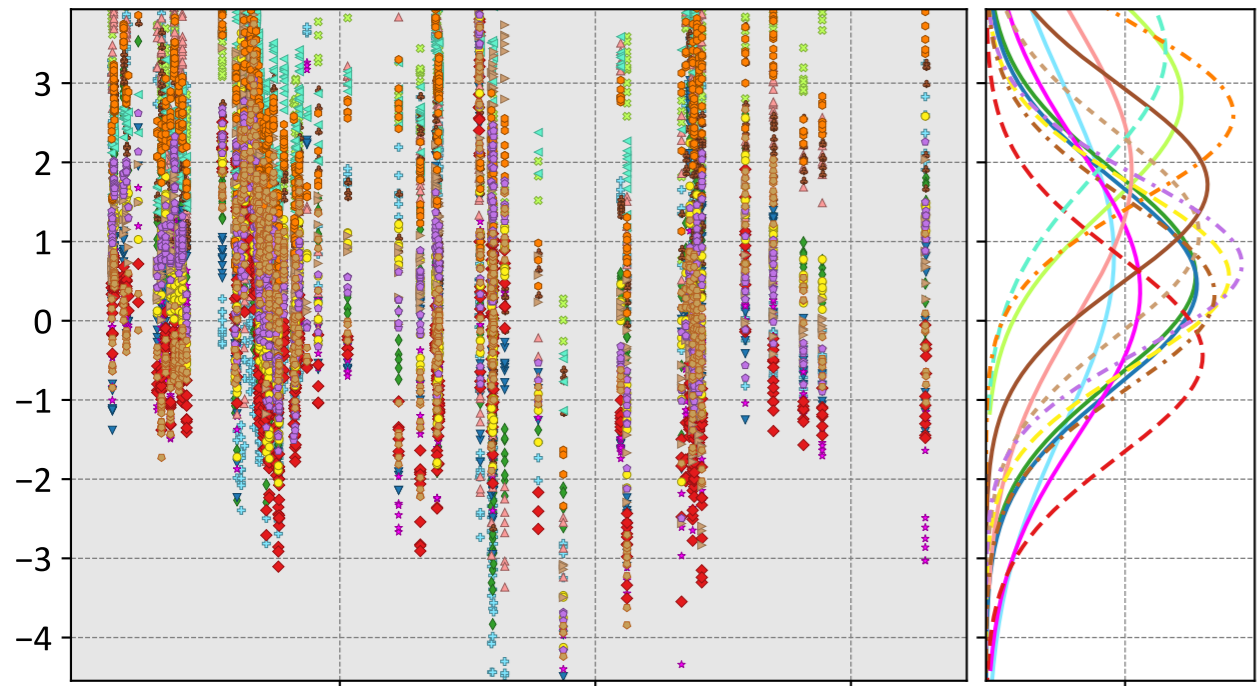
- CSU (0.36, 1.13, -0.31)
- Ames (0.10, 1.18, -0.20)
- COLA (0.60, 1.39, -0.14)
- UT (0.41, 1.14, -0.22)
- CMS-Flux (0.43, 1.25, -0.12)
- WOMBAT (0.72, 1.33, -0.22)
- JHU (0.30, 1.19, -0.28)
- TM5-4DVAR (0.59, 1.04, 0.03)
- OU (0.42, 0.99, 0.06)
- NIES (0.36, 0.94, -0.07)
- CT (0.13, 1.19, -0.07)
- CAMS (0.55, 1.09, -0.05)
- Baker (0.39, 1.13, -0.16)

LNLGOGIS



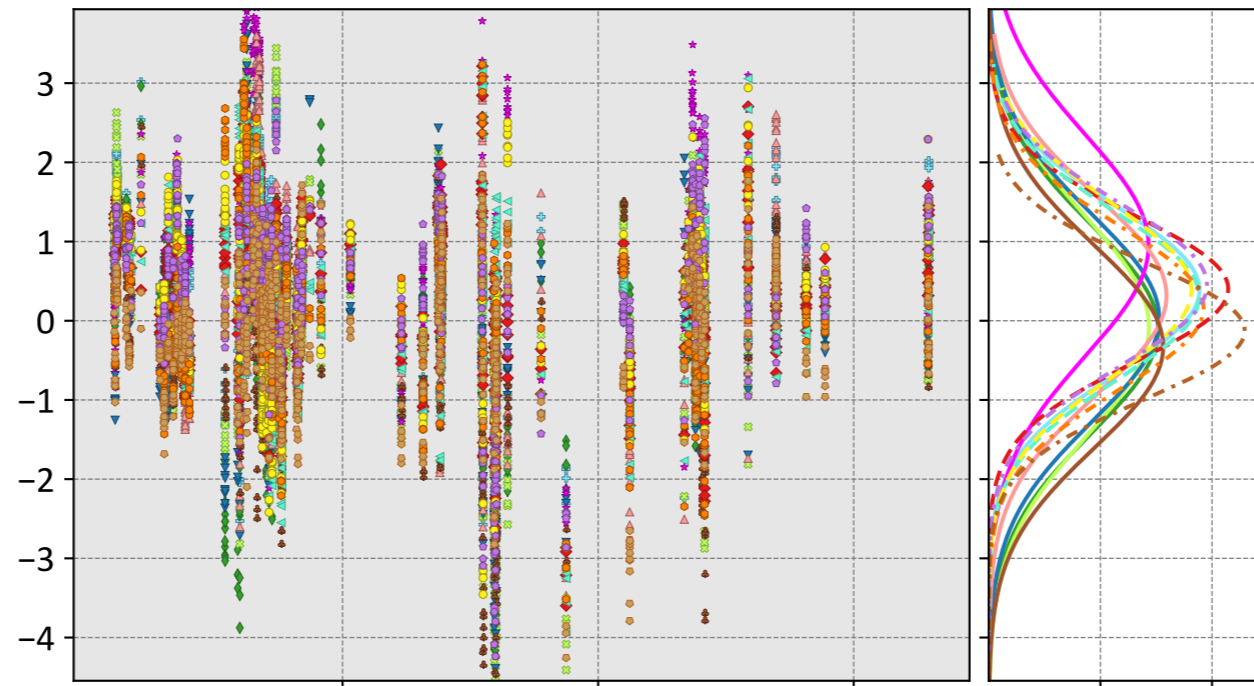
- CSU (0.07, 1.02, -0.24)
- Ames (-0.08, 1.14, -0.18)
- COLA (0.32, 1.18, -0.19)
- UT (0.05, 1.10, 0.01)
- CMS-Flux (0.46, 1.16, -0.02)
- WOMBAT (0.59, 1.24, -0.14)
- JHU (0.05, 1.07, -0.11)
- TM5-4DVAR (0.46, 0.96, -0.03)
- OU (0.27, 0.99, 0.08)
- NIES (-0.04, 0.90, -0.07)
- Weir (0.38, 0.98, -0.20)
- CAMS (0.45, 1.04, -0.02)
- Baker (0.52, 1.07, -0.12)
- CT (0.26, 1.42, -0.24)

prior



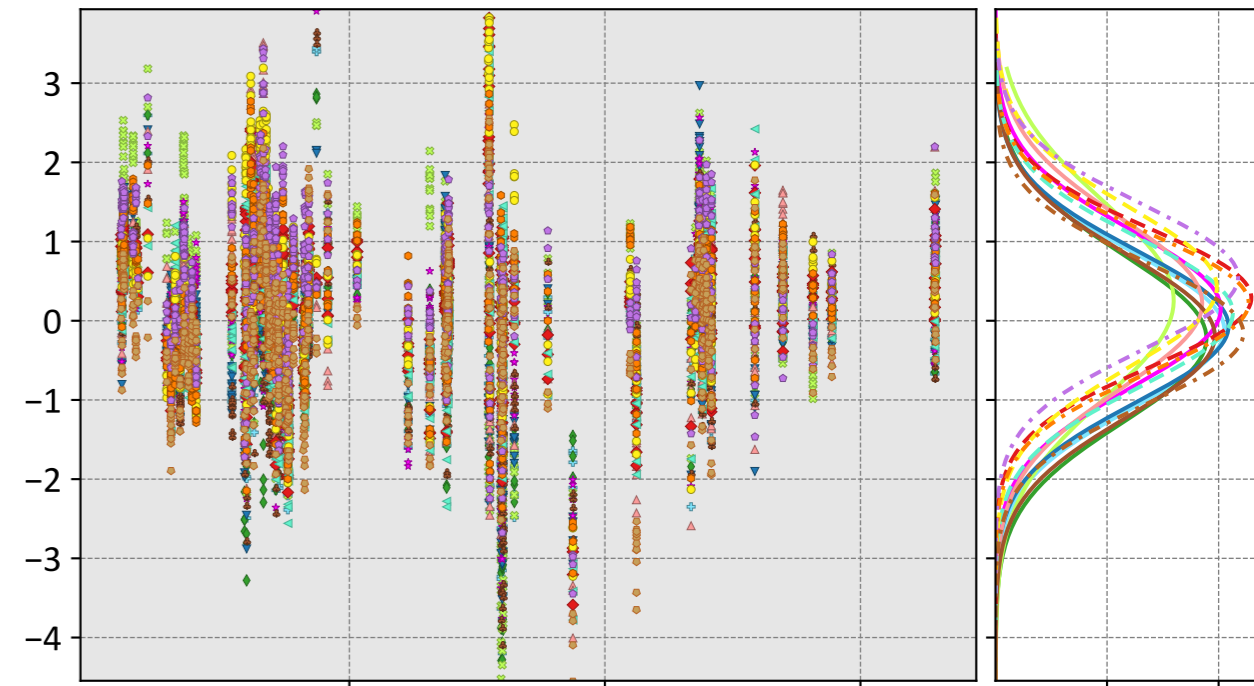
- CSU (0.81, 2.32, -0.16)
- Ames (0.57, 1.44, -0.29)
- COLA (2.82, 3.16, 0.34)
- UT (0.46, 1.39, -0.42)
- CMS-Flux (0.37, 1.84, -0.89)
- WOMBAT (1.89, 2.68, 0.50)
- JHU (1.71, 2.12, -0.17)
- TM5-4DVAR (-0.44, 1.35, -0.52)
- OU (3.40, 3.73, 1.16)
- NIES (0.33, 1.26, -0.25)
- Weir (1.09, 1.70, -0.68)
- CAMS (2.61, 2.84, 0.19)
- Baker (0.71, 1.30, -0.41)
- CT (0.57, 1.27, -0.22)

IS



- CSU (0.39, 1.13, -0.33)
- Ames (-0.10, 1.32, -0.33)
- COLA (-0.08, 1.39, -0.35)
- UT (0.03, 1.31, -0.40)
- CMS-Flux (0.95, 1.69, 0.04)
- WOMBAT (0.32, 1.29, -0.21)
- JHU (-0.33, 1.32, -0.25)
- TM5-4DVAR (0.40, 1.01, -0.20)
- OU (0.31, 1.10, -0.02)
- NIES (-0.13, 0.88, -0.01)
- CT (0.38, 1.16, -0.07)
- CAMS (0.16, 1.05, -0.23)
- Baker (0.45, 1.12, -0.13)

LNLG



- CSU (-0.12, 0.98, -0.18)
- Ames (-0.22, 1.08, -0.11)
- COLA (0.26, 1.27, -0.23)
- UT (-0.07, 0.96, -0.15)
- CMS-Flux (0.15, 1.00, 0.04)
- WOMBAT (0.22, 1.10, -0.18)
- JHU (-0.19, 1.03, -0.04)
- TM5-4DVAR (0.29, 0.92, -0.01)
- OU (0.10, 0.94, 0.06)
- NIES (-0.16, 0.91, 0.02)
- CT (0.42, 1.09, -0.13)
- CAMS (0.23, 0.91, -0.01)
- Baker (0.55, 1.07, -0.15)

Model - TCCON XCO₂ (ppm)