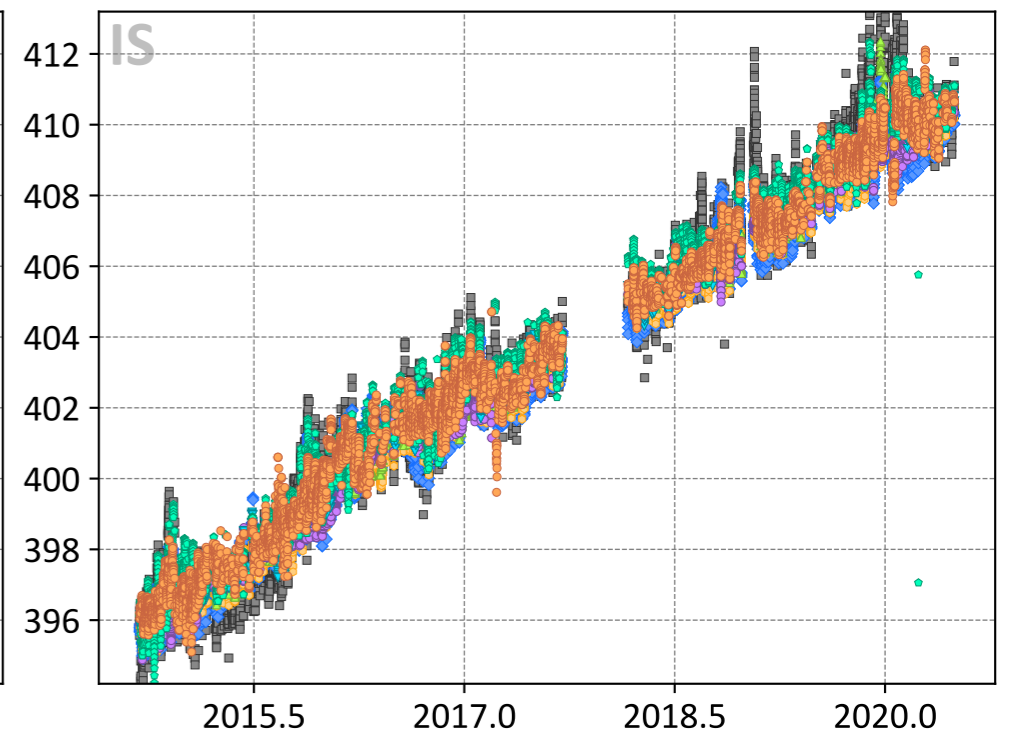
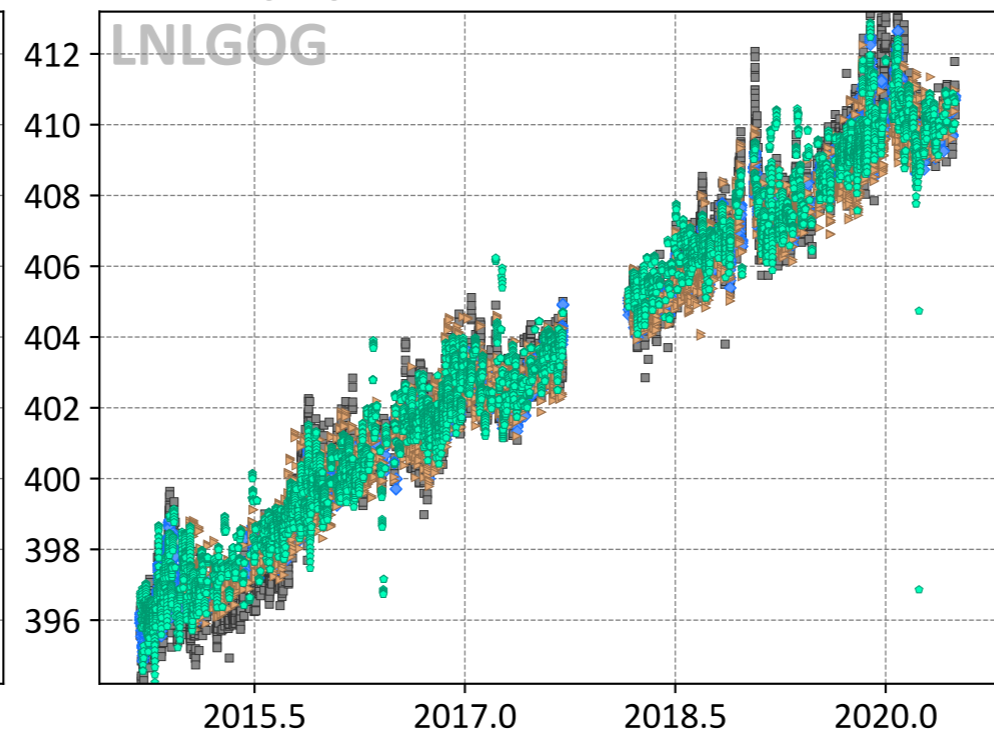
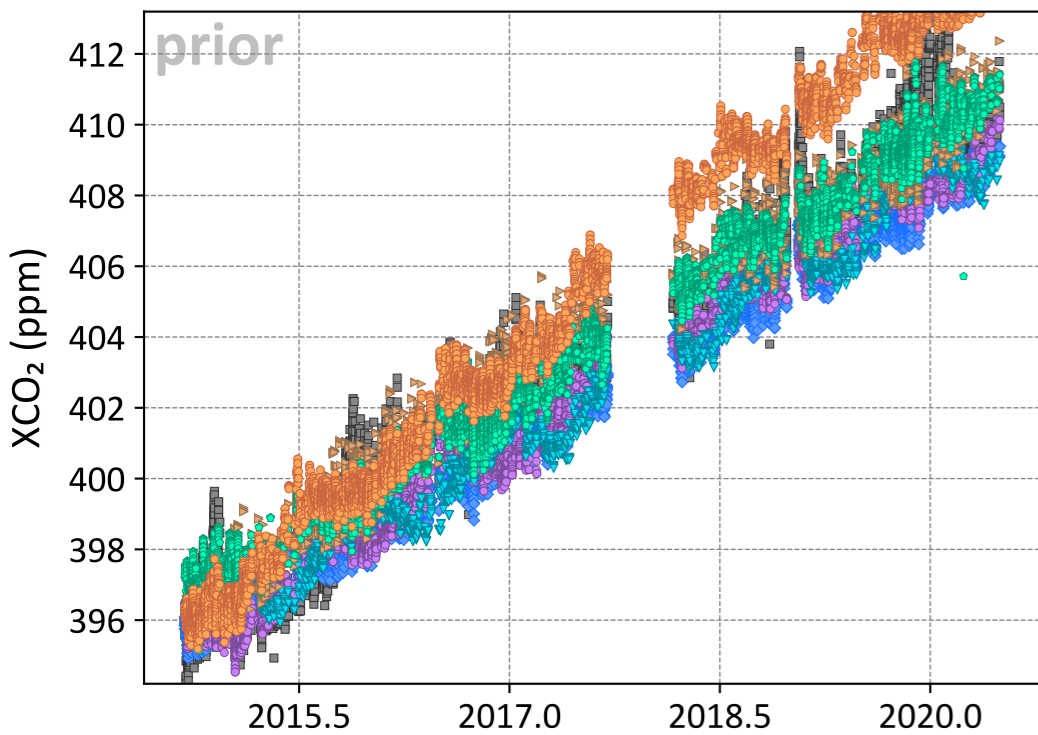


# Wollongong, New South Wales, Australia



- TCCON
- ◆ TM5-4DVAR (-1.27, 1.55)
- CT (-1.04, 1.38)
- ▼ UT (-1.04, 1.38)
- ▲ LoFI (0.33, 0.96)
- WOMBAT (1.72, 2.27)
- Baker (0.24, 0.86)

- TCCON
- ◆ TM5-4DVAR (-0.04, 0.58)
- ▲ LoFI (-0.09, 0.73)
- Baker (0.21, 0.80)

- TCCON
- ◆ TM5-4DVAR (-0.34, 0.75)
- CAMS (-0.37, 0.83)
- ▲ CSU (-0.20, 0.73)
- CT (-0.29, 0.89)
- ▼ UT (-0.03, 0.74)
- Baker (0.26, 0.73)
- WOMBAT (0.08, 0.77)