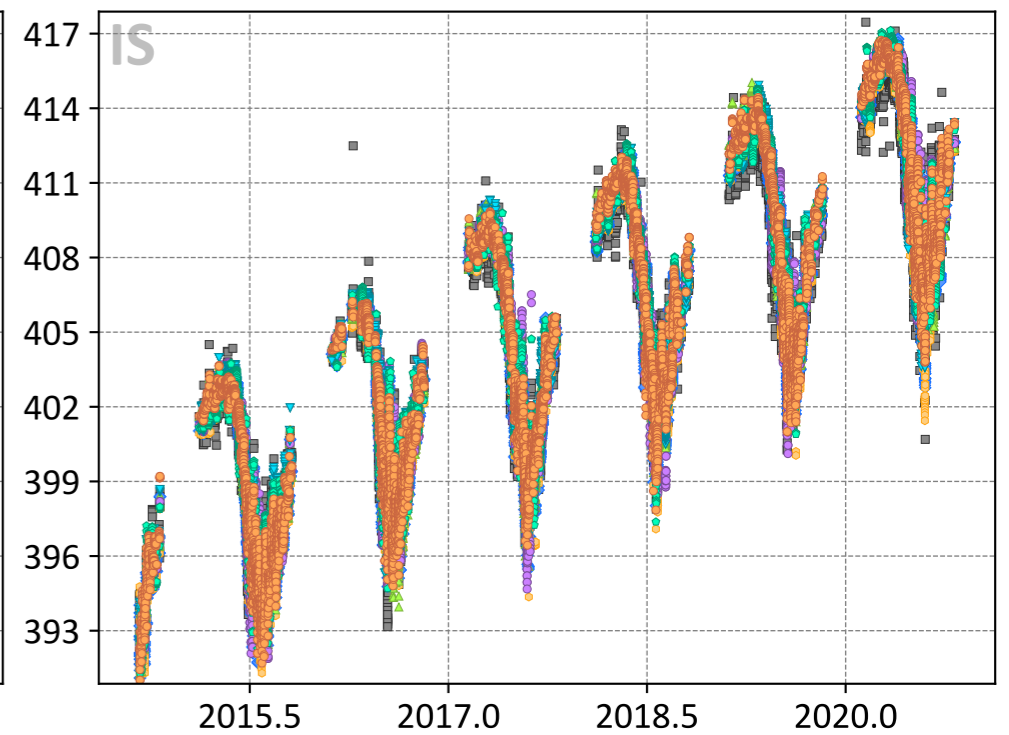
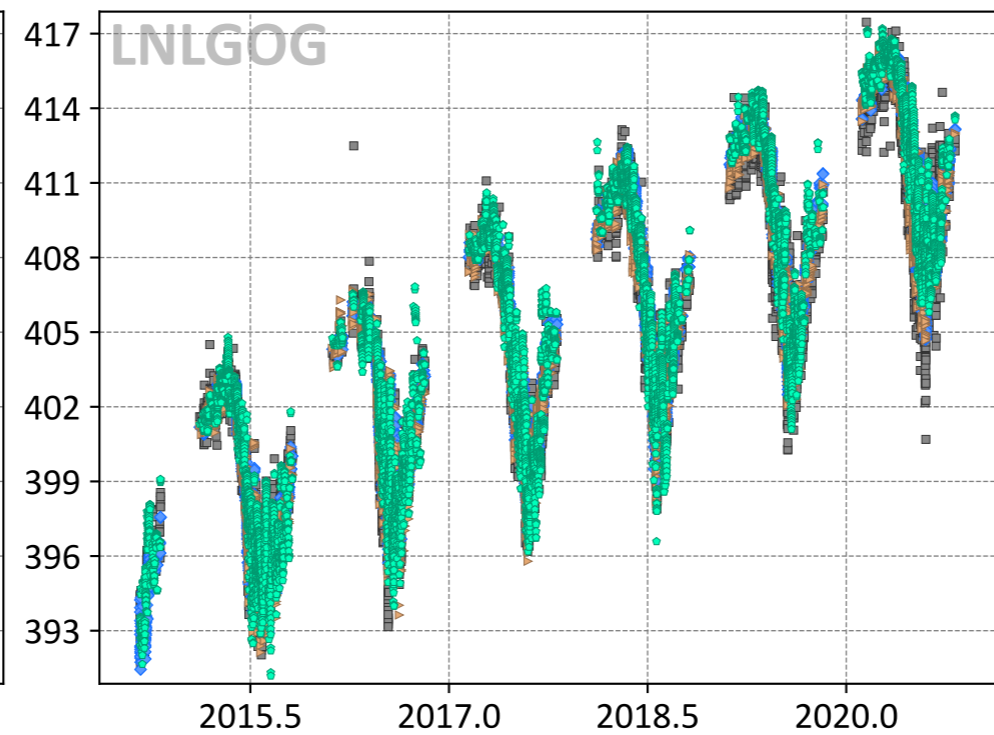
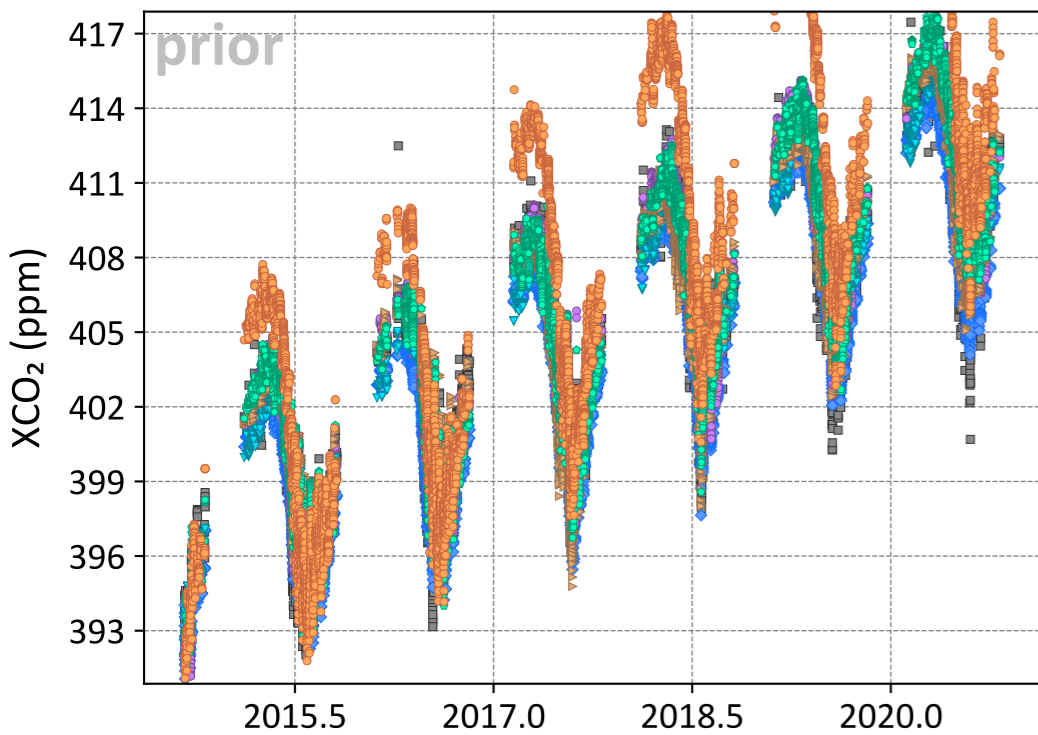


# Park Falls, Wisconsin, USA



- TCCON
- ◆ TM5-4DVAR (-0.85, 1.26)
- ▼ UT (0.54, 1.56)
- Baker (0.80, 1.44)
- WOMBAT (3.33, 4.18)
- CT (0.62, 1.16)
- ▶ LoFI (0.44, 1.14)

- TCCON
- ◆ TM5-4DVAR (0.43, 0.90)
- ▶ LoFI (0.20, 0.89)
- Baker (0.50, 1.29)

- TCCON
- ◆ TM5-4DVAR (0.12, 0.80)
- CAMS (-0.23, 0.98)
- ▲ CSU (0.17, 1.07)
- CT (0.21, 0.87)
- Baker (0.49, 1.03)
- WOMBAT (0.29, 0.98)
- ▼ UT (0.48, 1.14)