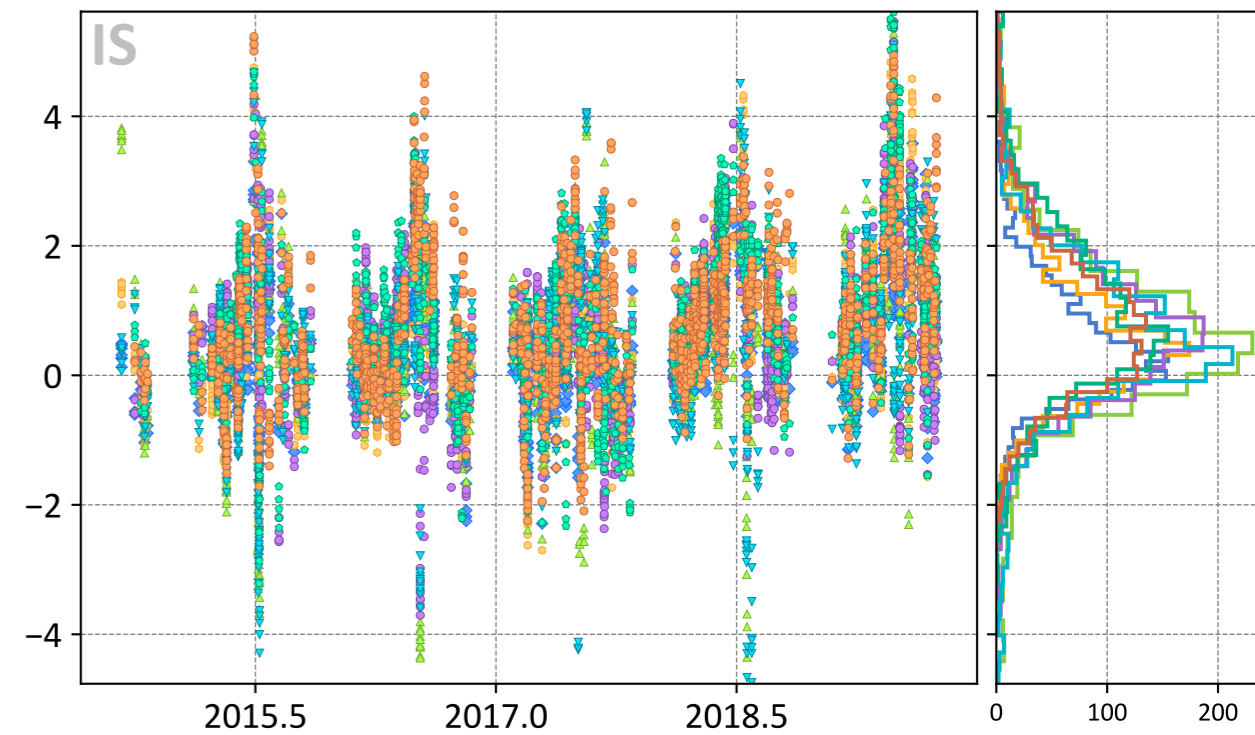
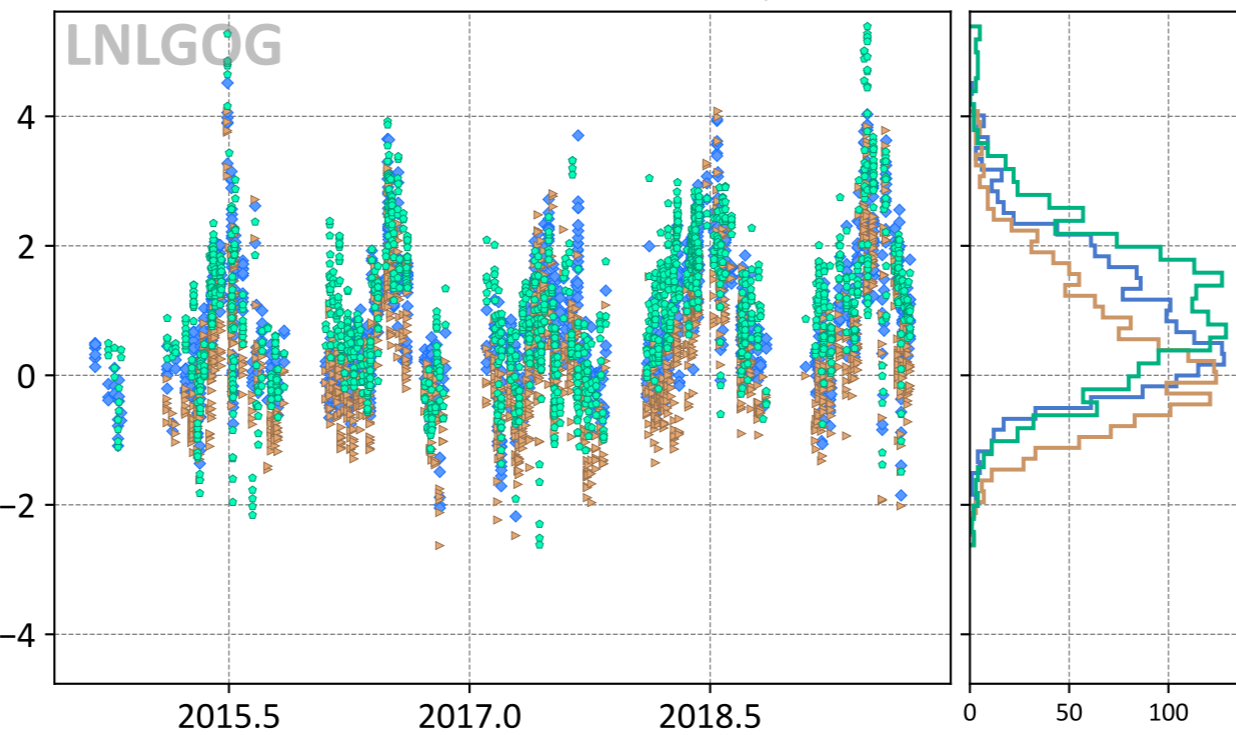
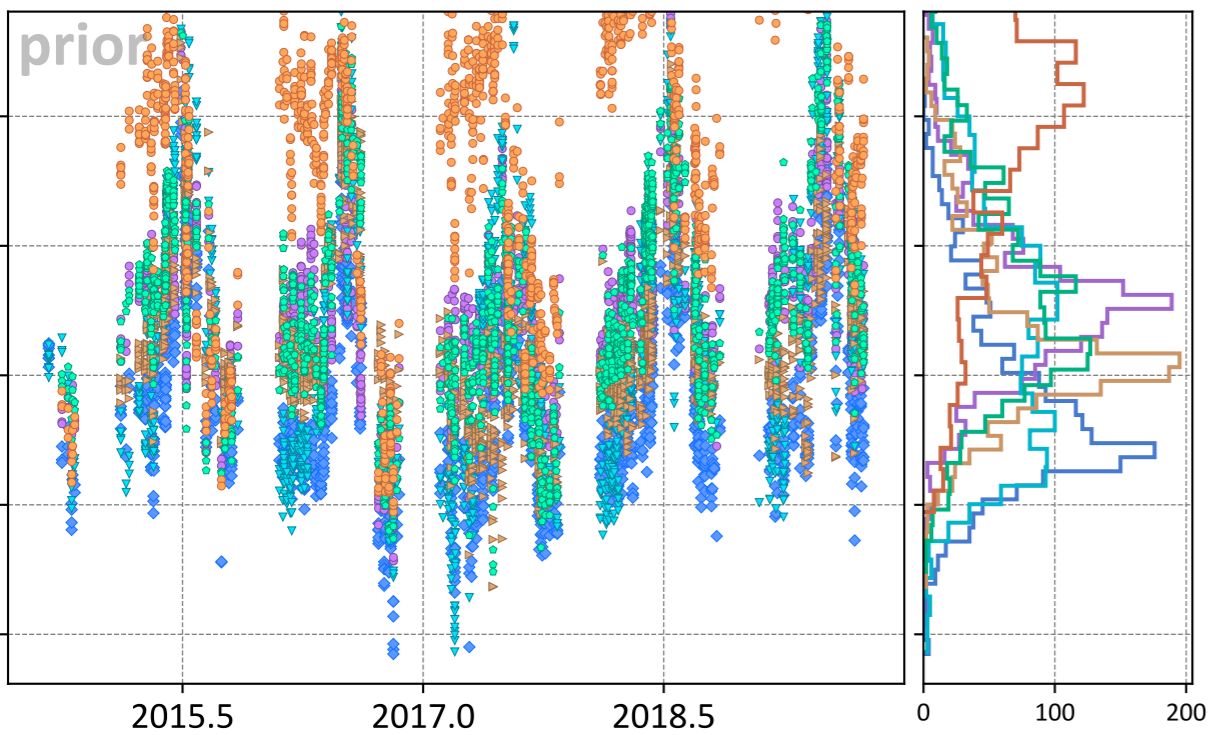


Rikubetsu, Hokkaido, Japan

Model - TCCON XCO₂ (ppm)



- ◆ TM5-4DVAR (-0.41, 1.42)
- ▼ UT (0.83, 2.18)
- Baker (1.27, 2.11)
- CT (1.16, 1.71)
- ▶ LoFI (0.62, 1.49)
- WOMBAT (4.17, 4.82)

- ◆ TM5-4DVAR (0.85, 1.30)
- ▶ LoFI (0.35, 1.12)
- Baker (1.06, 1.54)

- ◆ TM5-4DVAR (0.50, 0.99)
- CT (0.71, 1.38)
- Baker (0.94, 1.56)
- CAMS (0.67, 1.27)
- ▼ UT (0.54, 1.42)
- WOMBAT (0.83, 1.39)
- ▲ CSU (0.54, 1.45)