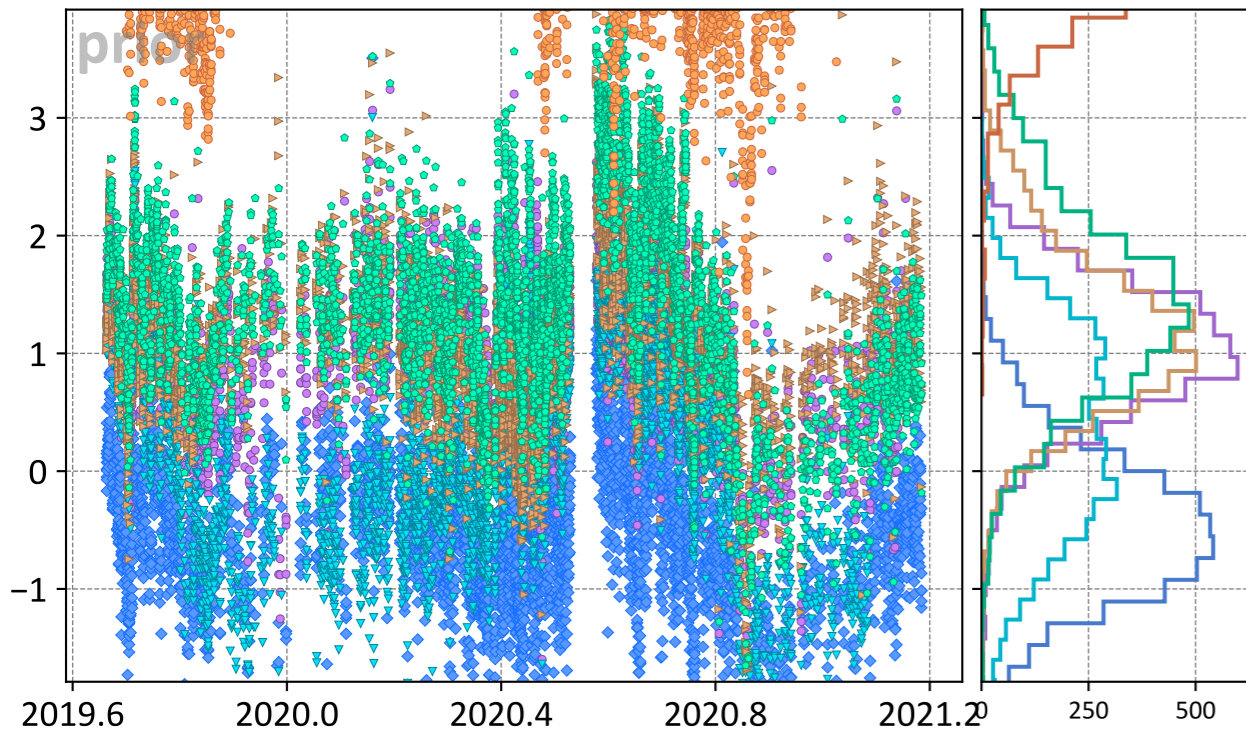
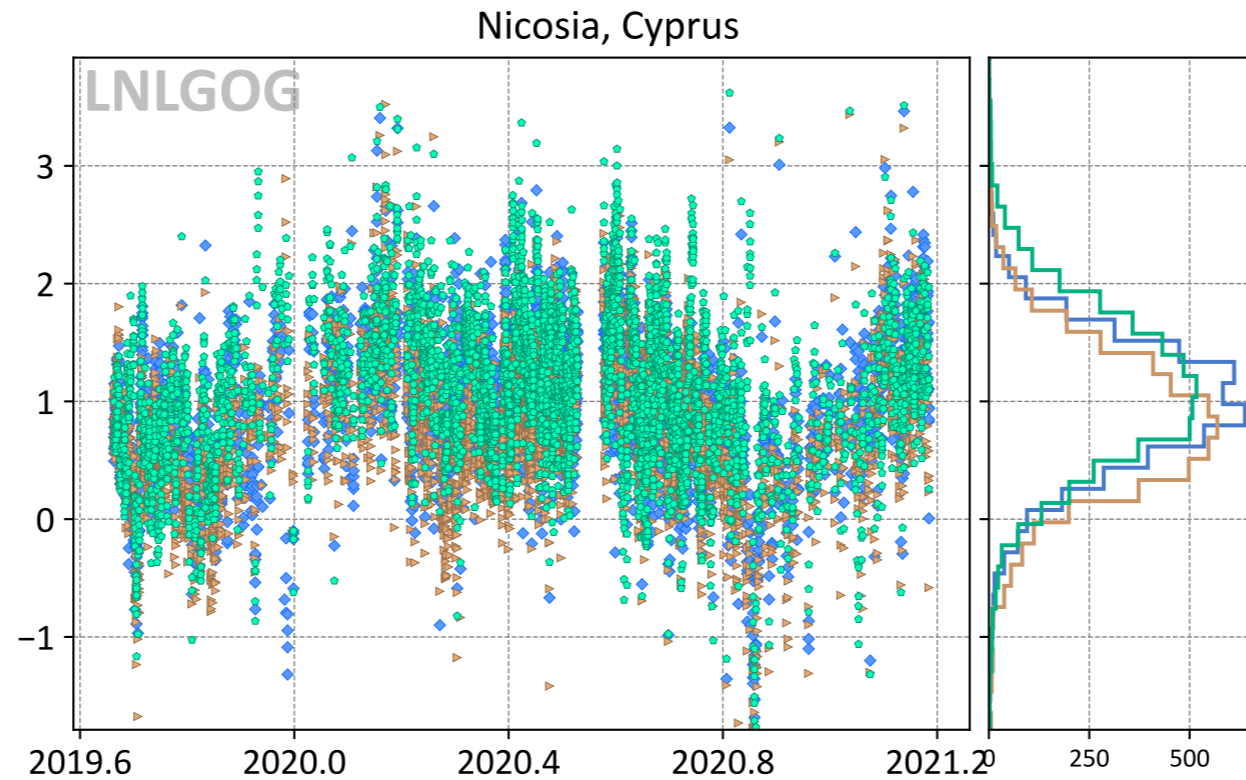


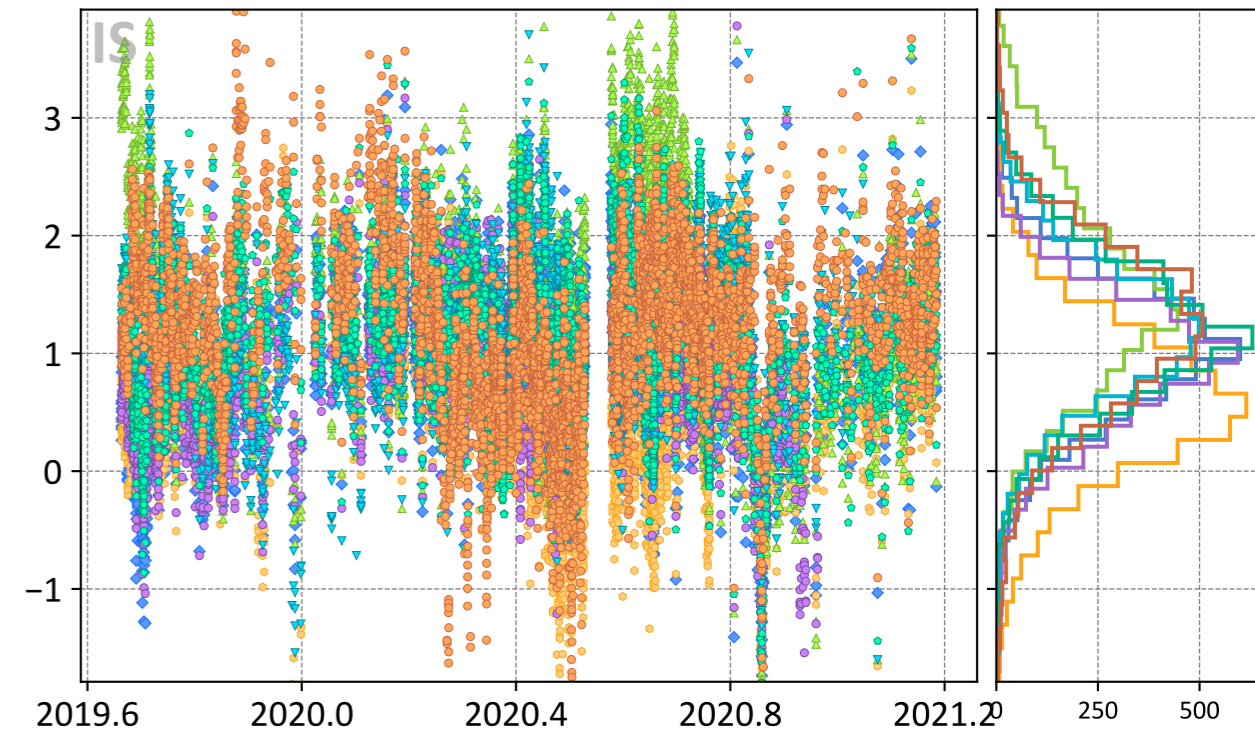
Model - TCCON XCO₂ (ppm)



◆ TM5-4DVAR (-0.49, 0.83) ▼ UT (0.25, 0.95) ● Baker (1.40, 1.64)
● CT (1.00, 1.17) ▶ LoFi (1.17, 1.36) ● WOMBAT (5.29, 5.44)



◆ TM5-4DVAR (0.97, 1.12) ▶ LoFi (0.81, 1.03) ● Baker (1.10, 1.29)



◆ TM5-4DVAR (1.01, 1.19) ● CT (0.90, 1.08) ● Baker (1.18, 1.35)
● CAMS (0.58, 0.90) ▼ UT (1.18, 1.34) ● WOMBAT (1.18, 1.41)
▲ CSU (1.50, 1.72)