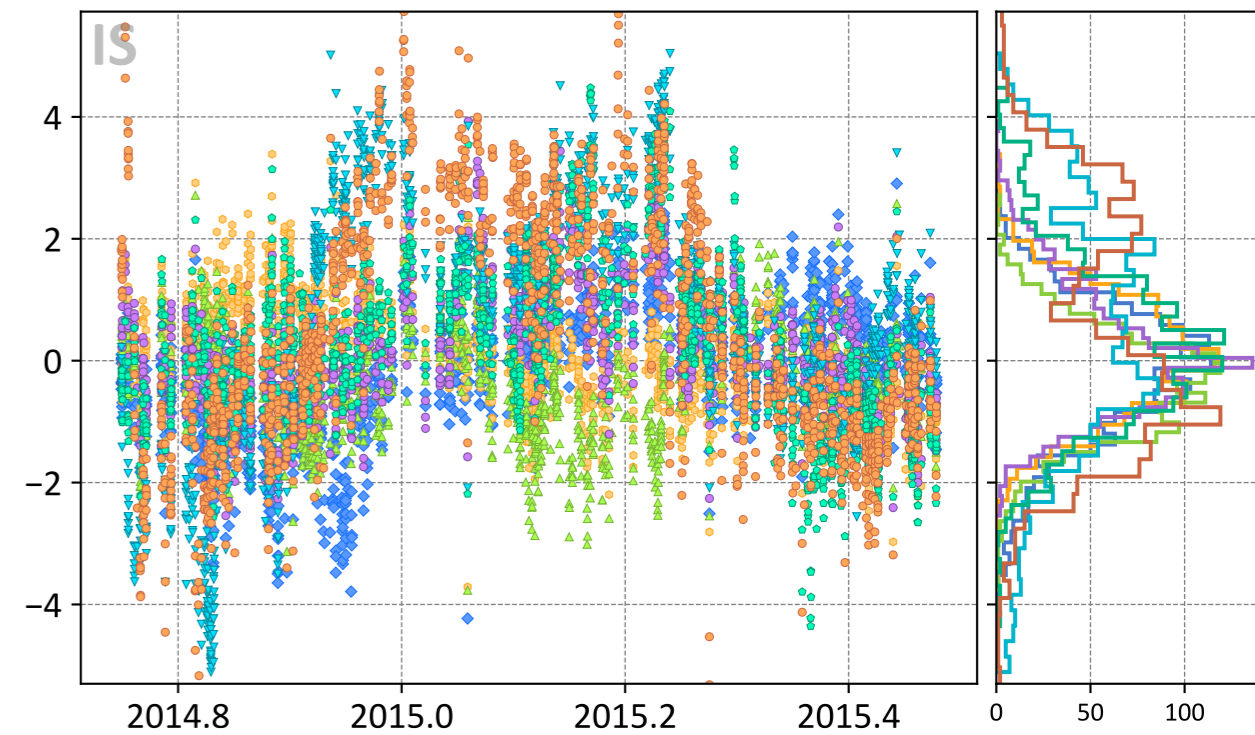
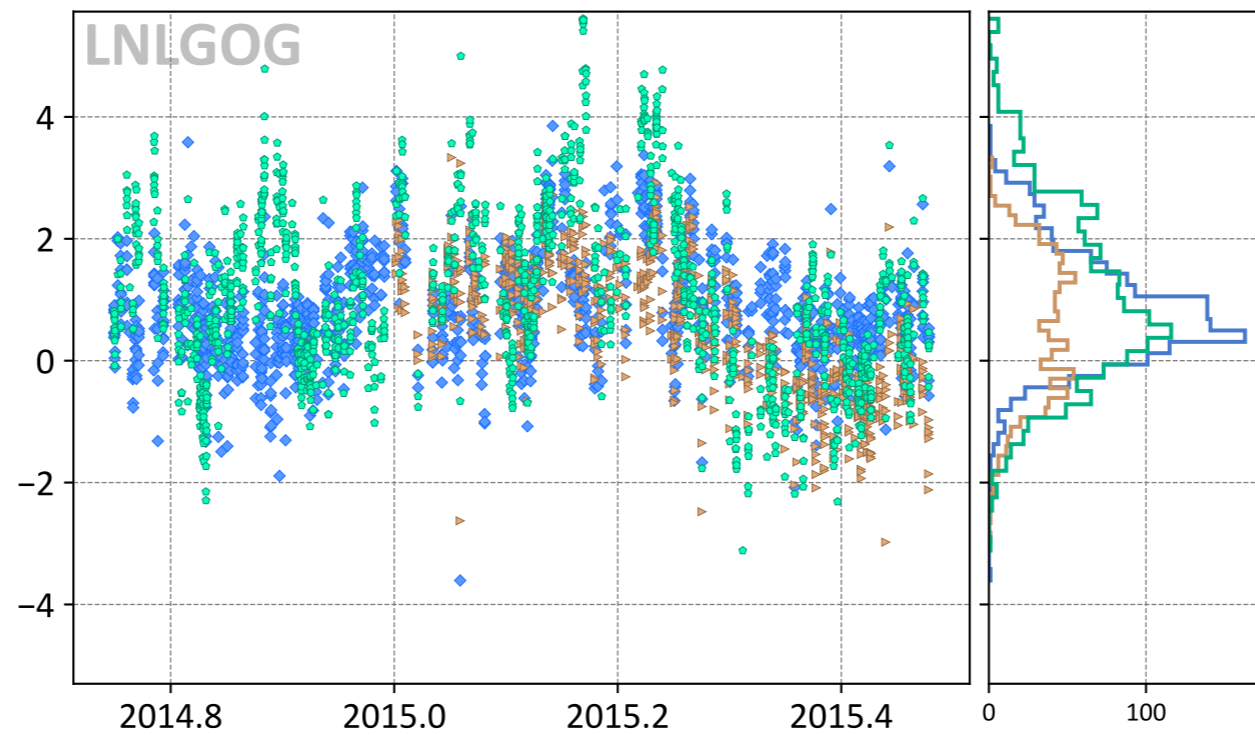
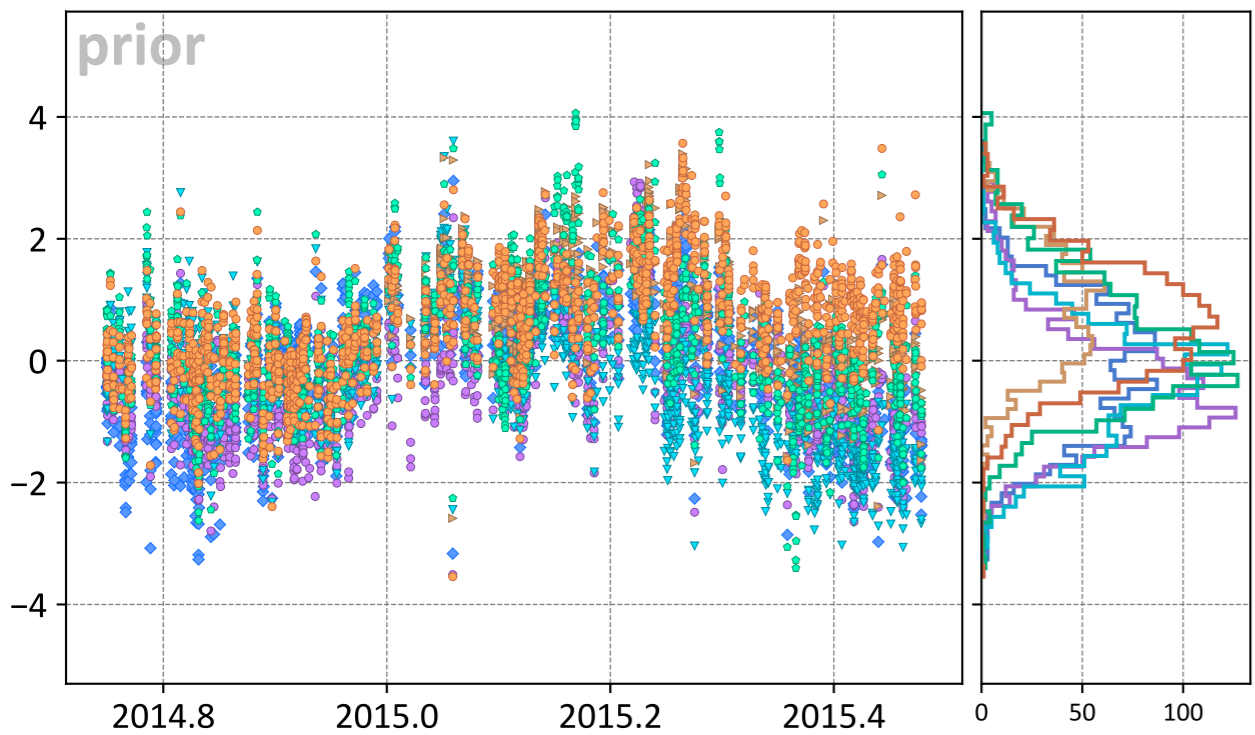


Manaus, Amazonas, Brazil

Model - TCCON XCO₂ (ppm)



- ◆ TM5-4DVAR (-0.17, 1.06)
- ▼ UT (-0.38, 1.05)
- Baker (0.28, 1.10)
- CT (-0.44, 1.05)
- ▶ LoFi (0.87, 1.29)
- WOMBAT (0.64, 1.12)

- ◆ TM5-4DVAR (0.85, 1.22)
- ▶ LoFi (0.56, 1.22)
- Baker (1.05, 1.73)

- ◆ TM5-4DVAR (-0.20, 1.09)
- CT (0.14, 1.00)
- Baker (0.24, 1.34)
- CAMS (0.06, 0.93)
- ▼ UT (0.51, 2.08)
- WOMBAT (0.45, 1.99)
- ▲ CSU (-0.37, 0.94)