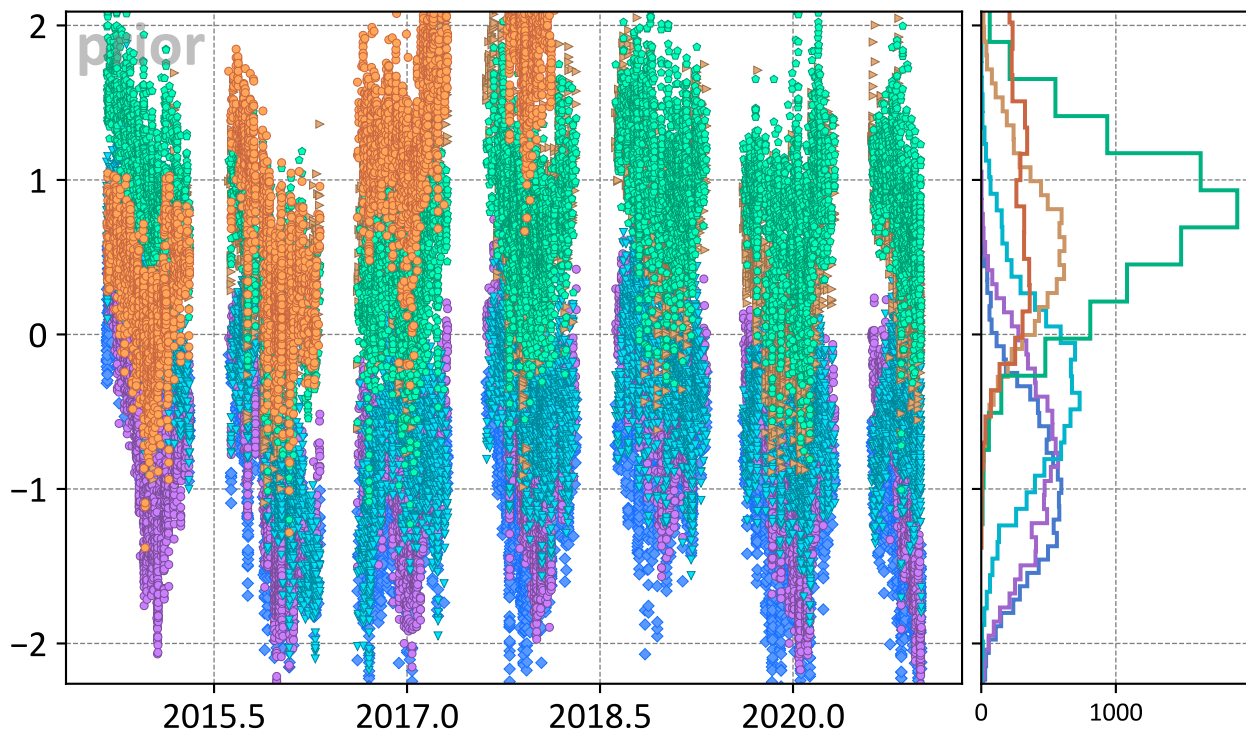
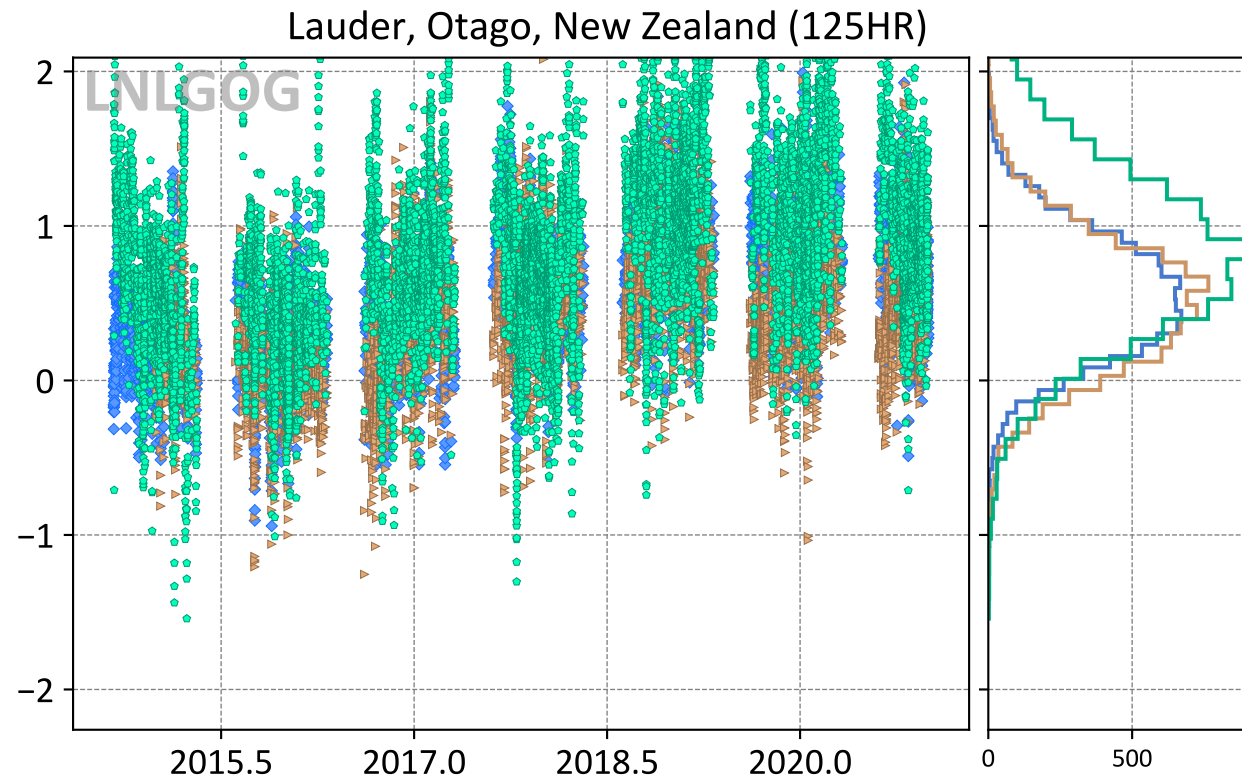


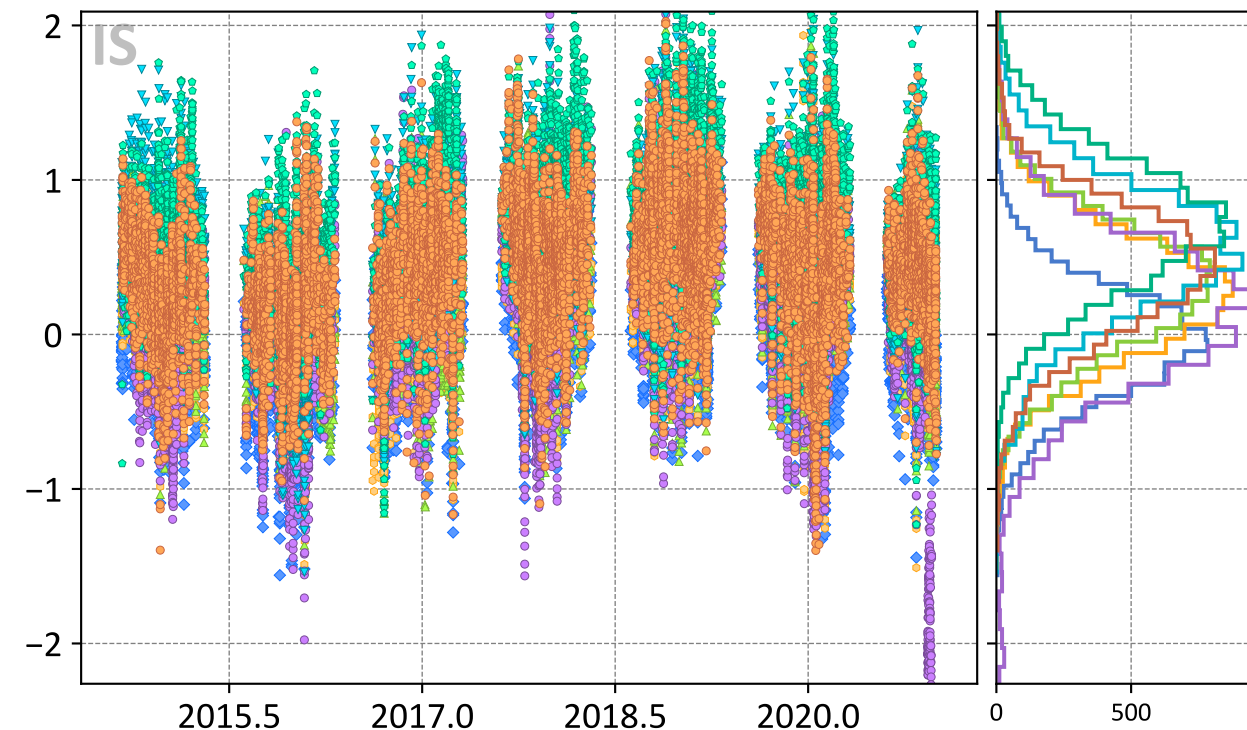
Model - TCCON XCO<sub>2</sub> (ppm)



- ◆ TM5-4DVAR (-0.97, 1.10)
- ▼ UT (-0.34, 0.67)
- Baker (0.74, 0.90)
- CT (-0.79, 0.97)
- ▶ LoFI (0.58, 0.78)
- WOMBAT (2.35, 2.81)



- ◆ TM5-4DVAR (0.55, 0.67)
- ▶ LoFI (0.50, 0.66)
- Baker (0.84, 1.04)



- ◆ TM5-4DVAR (-0.06, 0.38)
- CT (0.11, 0.56)
- Baker (0.72, 0.84)
- CAMS (0.25, 0.48)
- ▼ UT (0.53, 0.71)
- WOMBAT (0.41, 0.59)
- ▲ CSU (0.30, 0.51)