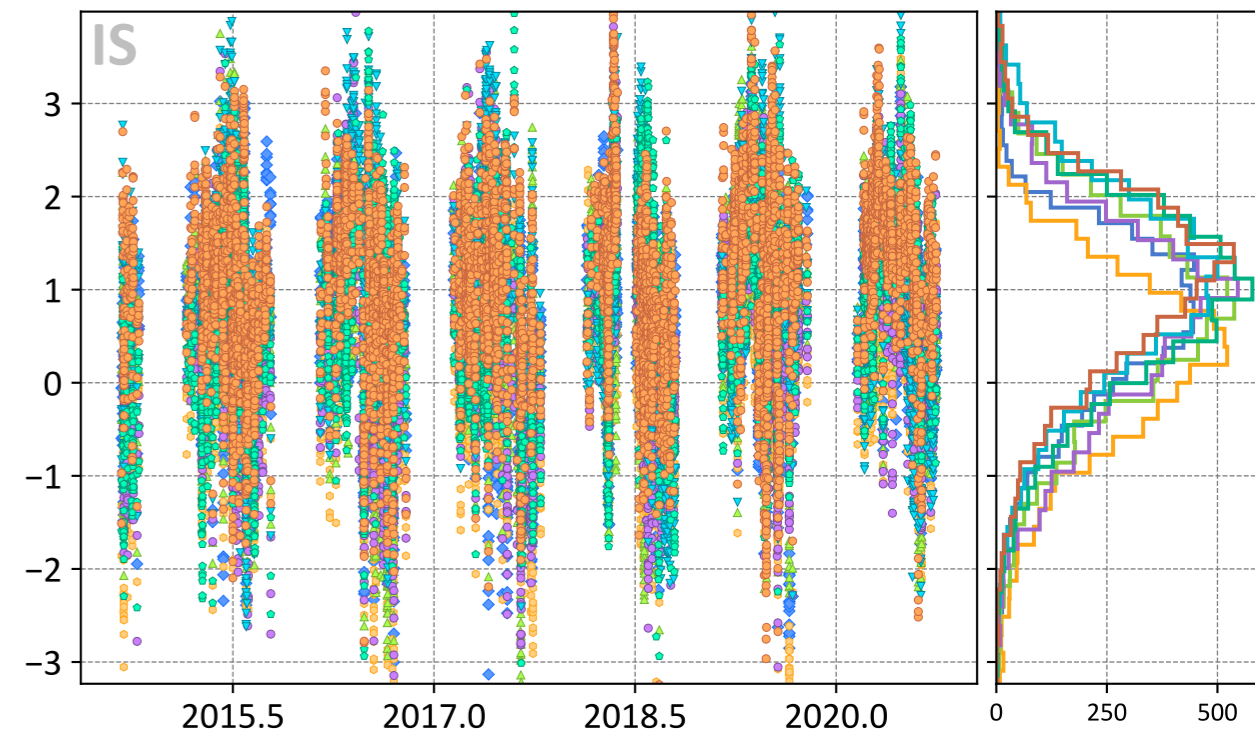
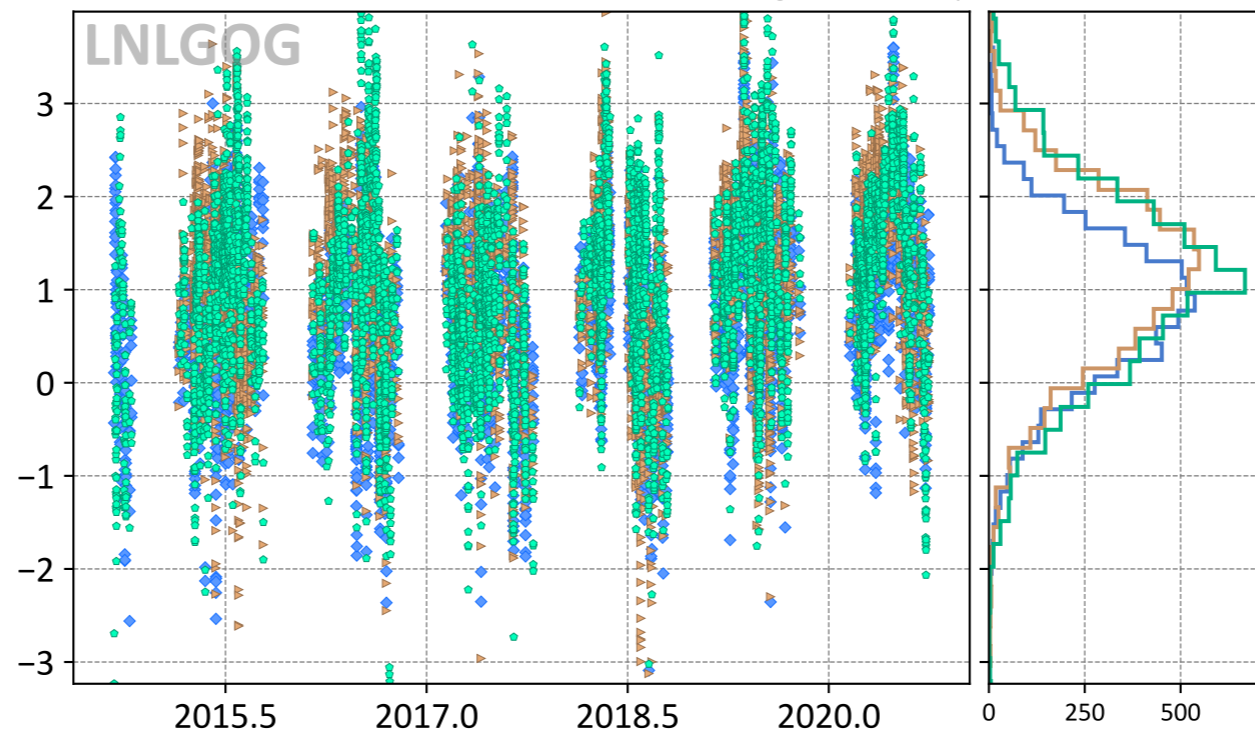
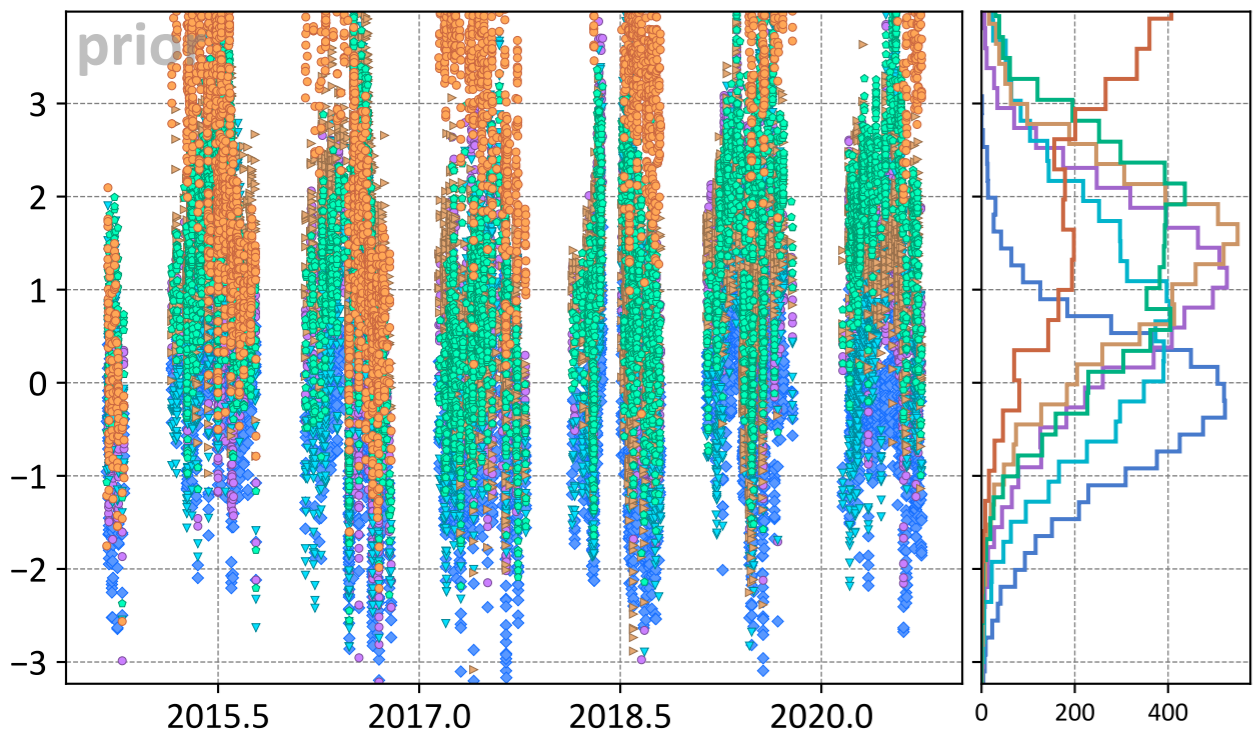


Karlsruhe, Baden-Württemberg, Germany

Model - TCCON XCO₂ (ppm)



- ◆ TM5-4DVAR (-0.30, 0.93)
- ▼ UT (0.74, 1.49)
- Baker (1.31, 1.74)
- CT (0.96, 1.41)
- ▶ LoFI (1.28, 1.64)
- WOMBAT (4.14, 4.71)

- ◆ TM5-4DVAR (0.78, 1.13)
- ▶ LoFI (1.09, 1.44)
- Baker (1.03, 1.48)

- ◆ TM5-4DVAR (0.64, 1.10)
- CAMS (0.20, 0.99)
- ▲ CSU (0.71, 1.29)
- CT (0.62, 1.22)
- ▼ UT (1.04, 1.47)
- Baker (0.87, 1.32)
- WOMBAT (1.05, 1.44)