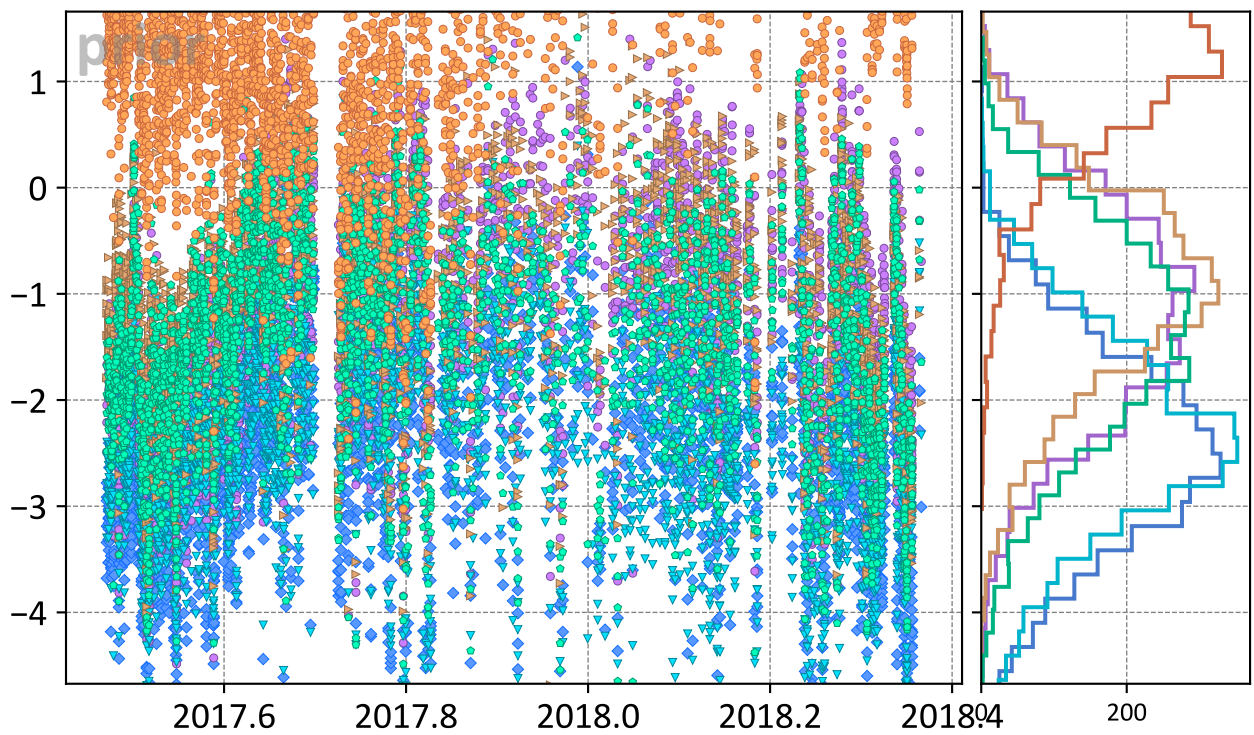
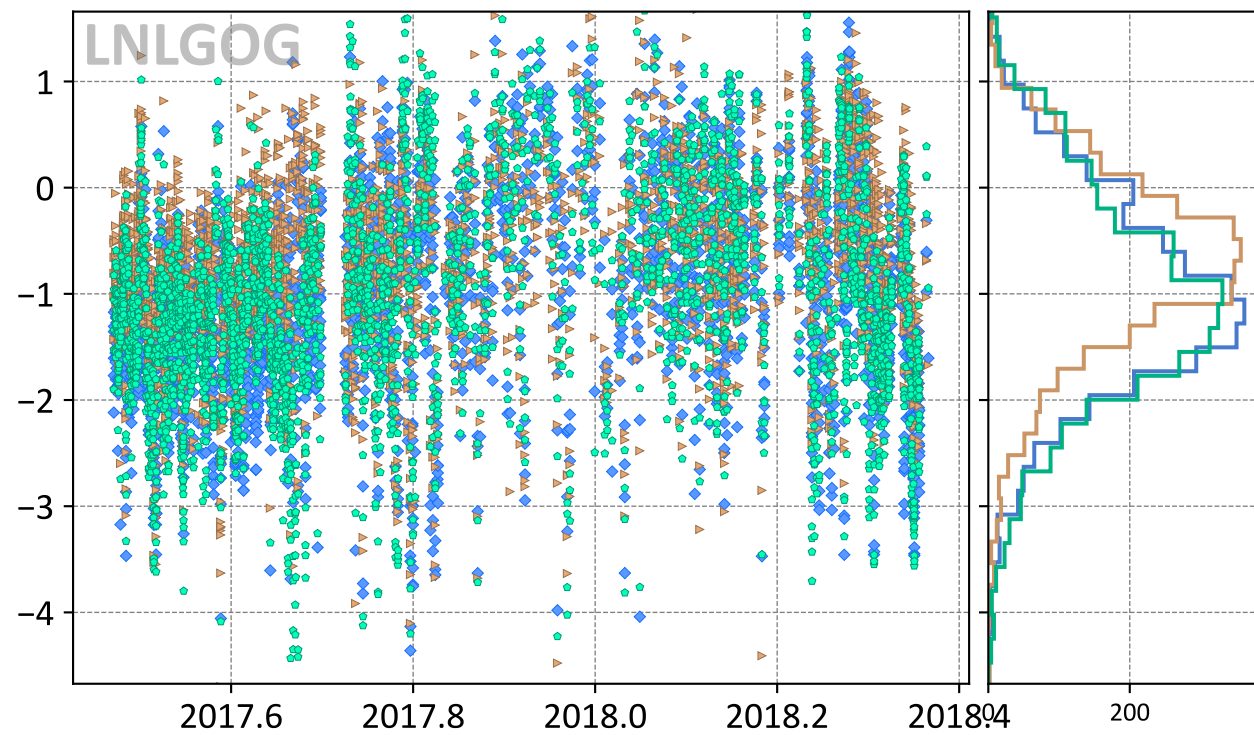


Model - TCCON XCO₂ (ppm)

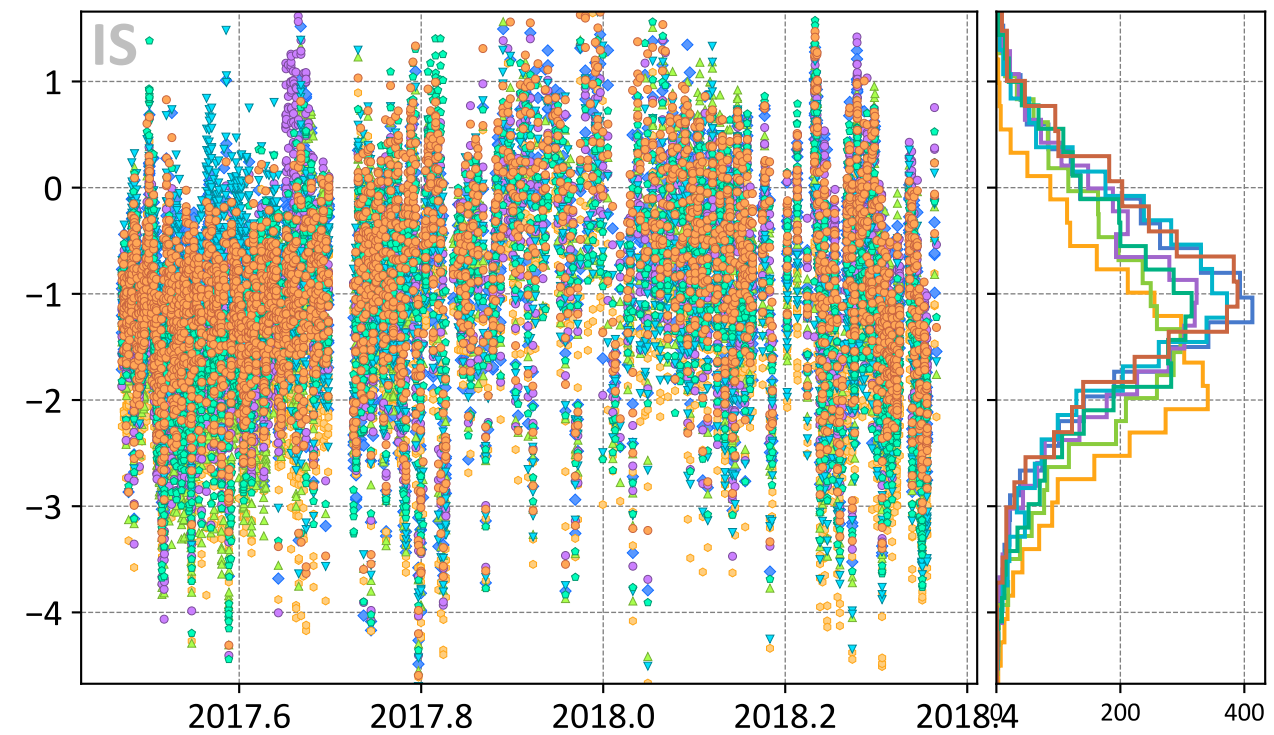


- ◆ TM5-4DVAR (-2.52, 2.70)
- ▼ UT (-2.38, 2.58)
- Baker (-1.44, 1.75)
- CT (-1.18, 1.56)
- ▲ LoFI (-0.99, 1.37)
- WOMBAT (1.66, 2.13)

JPL, California, USA



- ◆ TM5-4DVAR (-1.02, 1.37)
- ▲ LoFI (-0.72, 1.12)
- Baker (-1.04, 1.46)



- ◆ TM5-4DVAR (-1.02, 1.36)
- CAMS (-1.66, 1.91)
- ▲ CSU (-1.29, 1.66)
- CT (-1.08, 1.44)
- ▼ UT (-1.04, 1.40)
- Baker (-1.15, 1.53)
- WOMBAT (-0.92, 1.30)