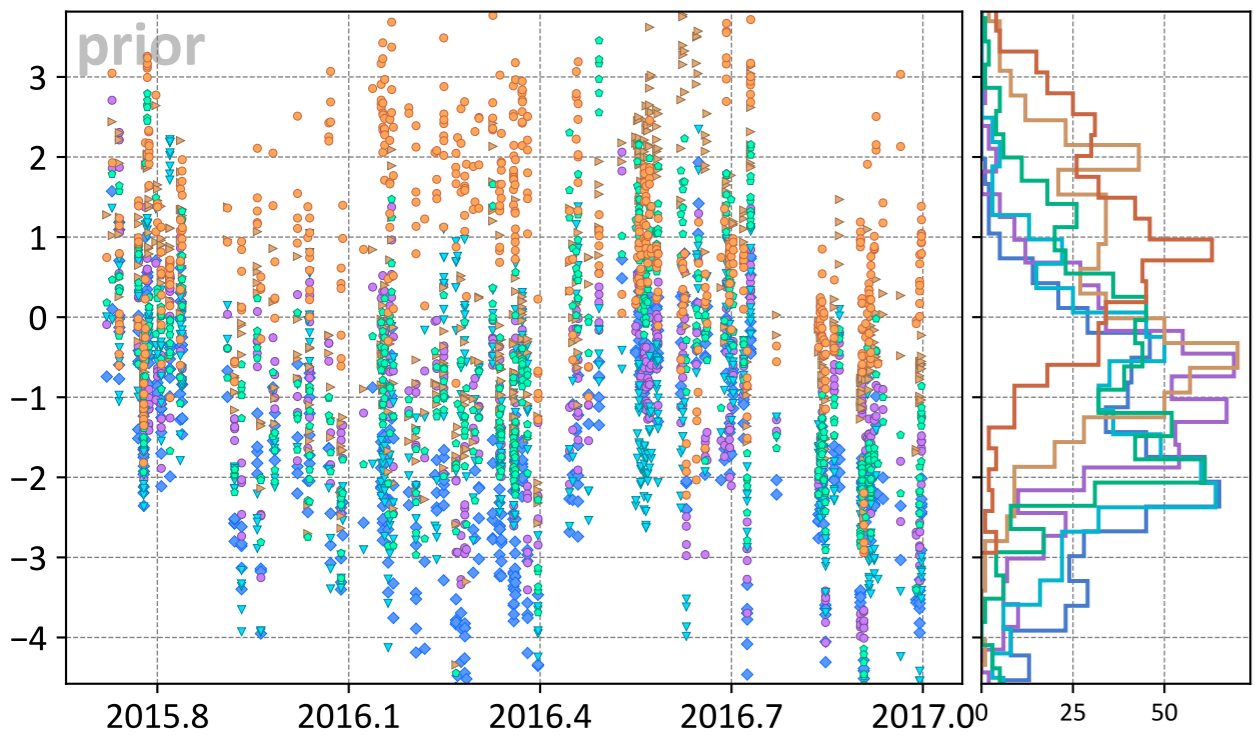
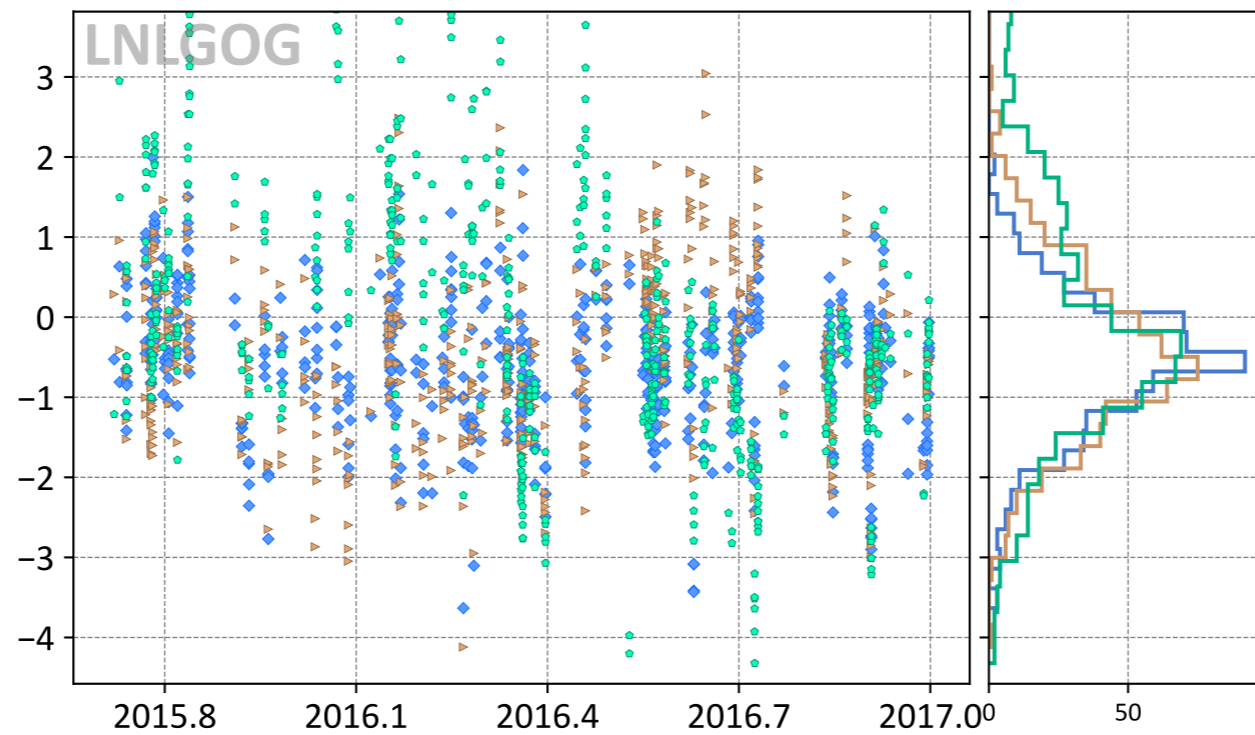


# Hefei, Anhui, China

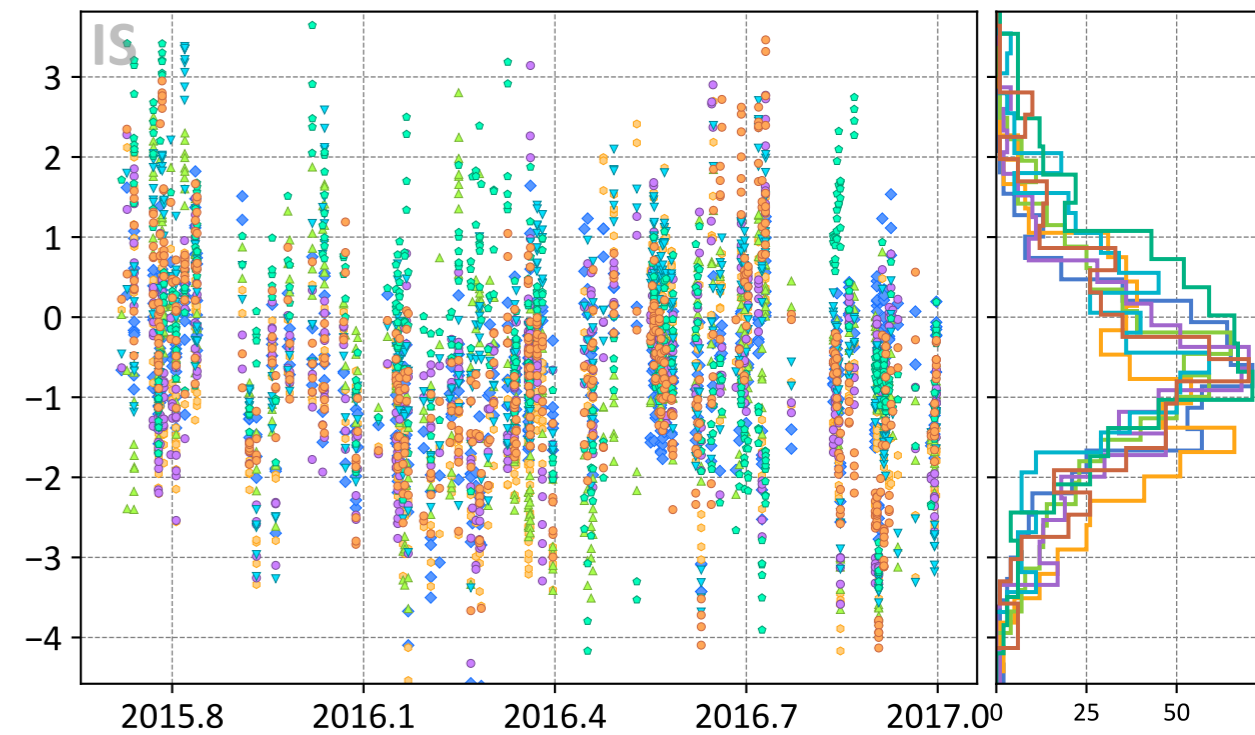
Model - TCCON XCO<sub>2</sub> (ppm)



- ◆ TM5-4DVAR (-1.74, 2.22)
- ▼ UT (-1.36, 2.01)
- Baker (-0.62, 1.57)
- CT (-1.00, 1.56)
- ▶ LoFi (0.22, 1.47)
- WOMBAT (1.02, 1.67)



- ◆ TM5-4DVAR (-0.59, 1.07)
- ▶ LoFi (-0.45, 1.17)
- Baker (-0.00, 1.74)



- ◆ TM5-4DVAR (-0.73, 1.24)
- CAMS (-0.98, 1.68)
- ▲ CSU (-0.67, 1.45)
- CT (-0.72, 1.45)
- ▼ UT (-0.29, 1.37)
- Baker (-0.18, 1.43)
- WOMBAT (-0.64, 1.50)