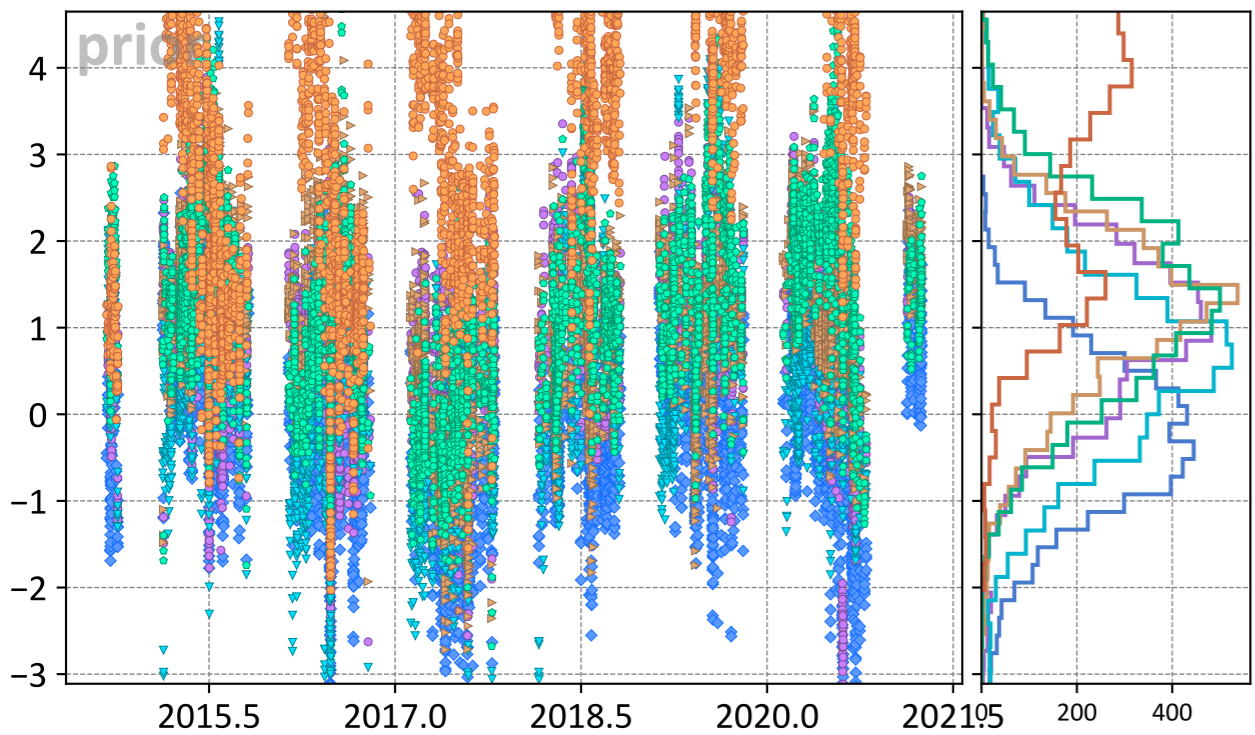
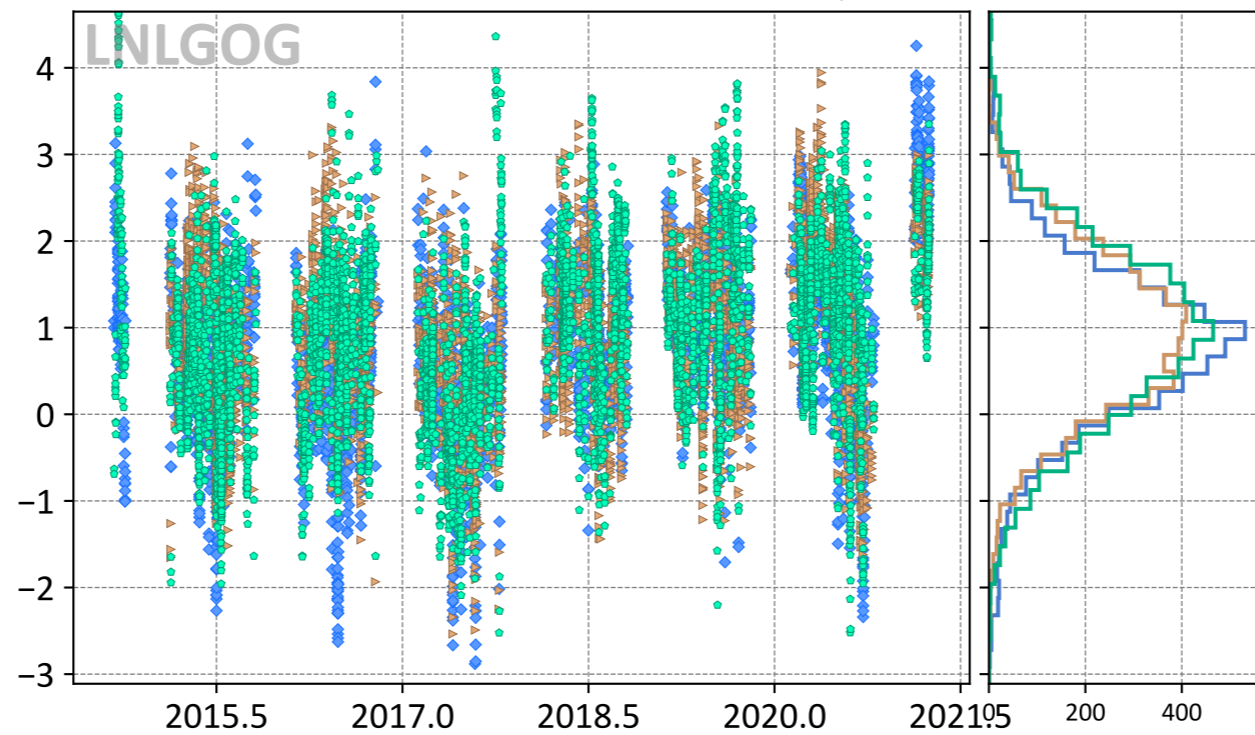


Garmisch, Bavaria, Germany

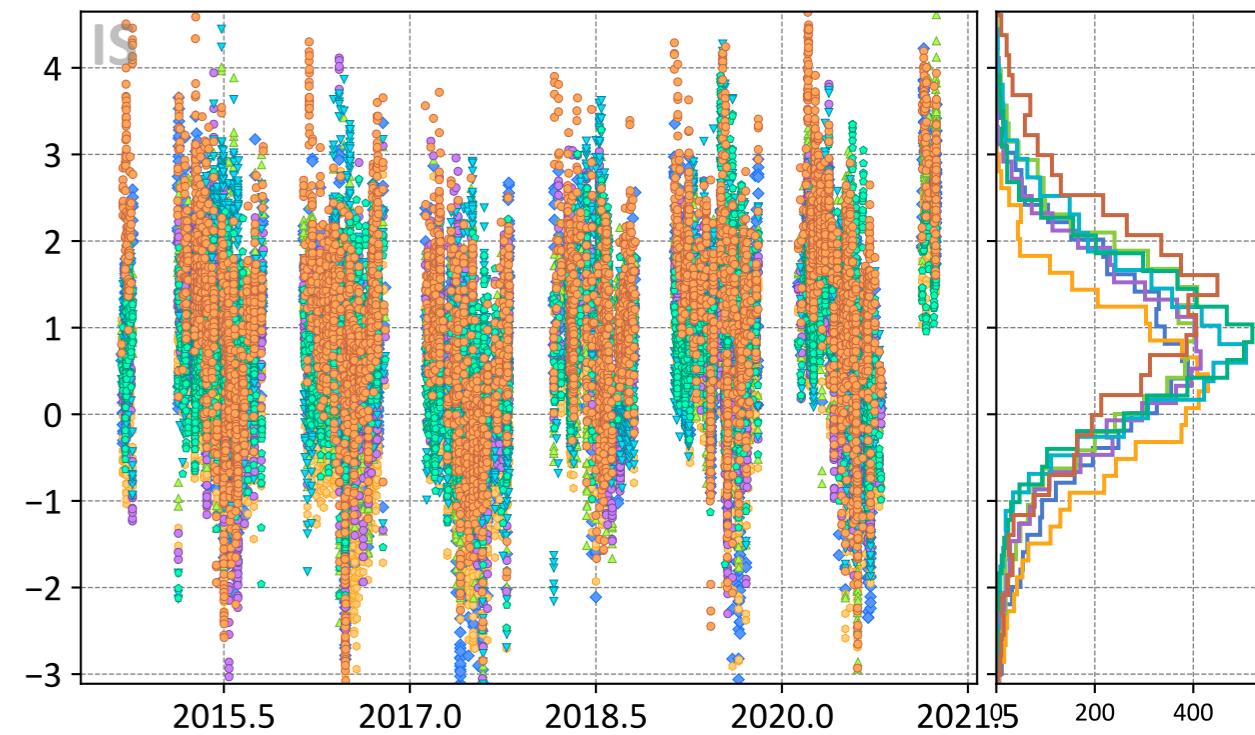
Model - TCCON XCO₂ (ppm)



- ◆ TM5-4DVAR (-0.28, 1.00)
- ▼ UT (0.59, 1.33)
- Baker (1.27, 1.67)
- CT (0.94, 1.38)
- ▶ LoFi (1.16, 1.52)
- WOMBAT (4.19, 4.82)



- ◆ TM5-4DVAR (0.78, 1.22)
- ▶ LoFi (0.92, 1.30)
- Baker (0.92, 1.37)



- ◆ TM5-4DVAR (0.59, 1.27)
- CT (0.67, 1.19)
- Baker (0.87, 1.22)
- CAMS (0.18, 1.01)
- ▼ UT (0.90, 1.32)
- WOMBAT (1.13, 1.67)
- ▲ CSU (0.86, 1.38)