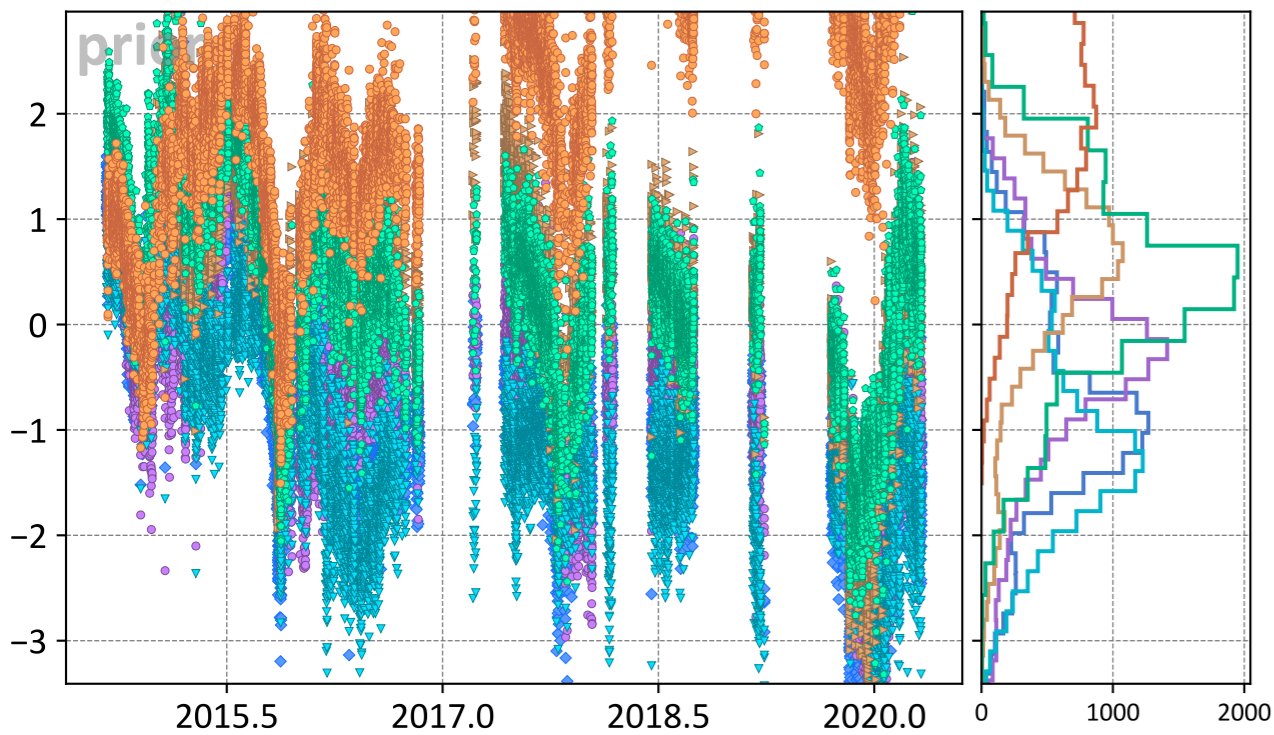
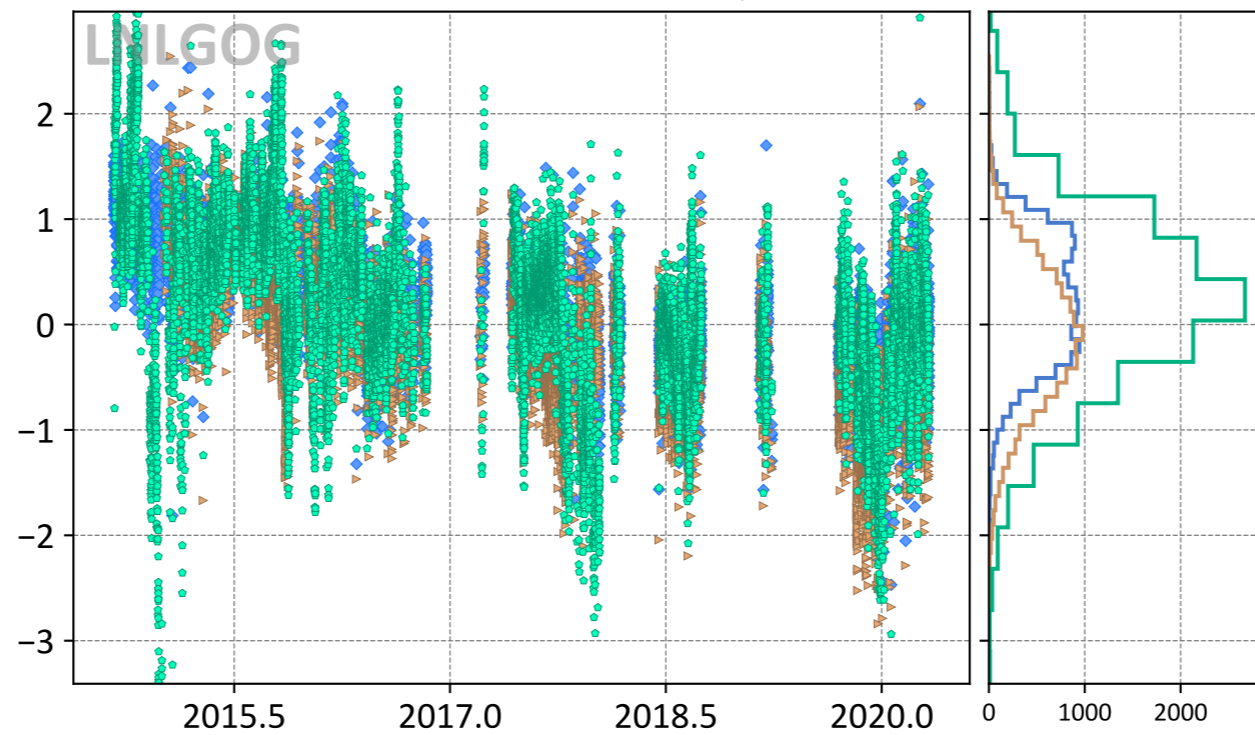


### Darwin, Northern Territory, Australia

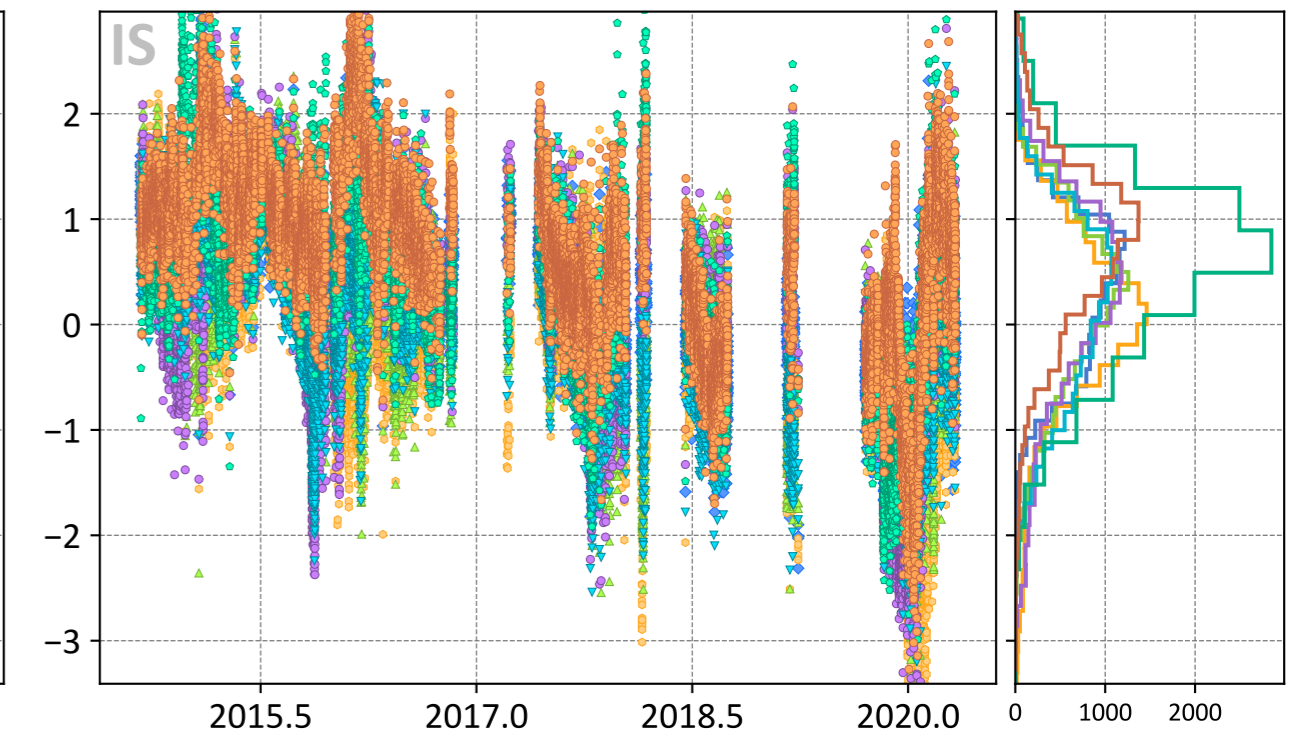
Model - TCCON XCO<sub>2</sub> (ppm)



- ◆ TM5-4DVAR (-0.75, 1.27)
- ▼ UT (-0.99, 1.40)
- Baker (0.39, 1.03)
- CT (-0.46, 1.11)
- ▶ LoFI (0.39, 1.08)
- WOMBAT (2.23, 2.54)



- ◆ TM5-4DVAR (0.22, 0.63)
- ▶ LoFI (-0.13, 0.68)
- Baker (0.20, 0.92)



- ◆ TM5-4DVAR (0.31, 0.77)
- CT (0.22, 0.99)
- Baker (0.52, 1.00)
- CAMS (0.00, 0.87)
- ▼ UT (0.13, 0.84)
- WOMBAT (0.70, 1.08)
- ▲ CSU (0.18, 0.84)