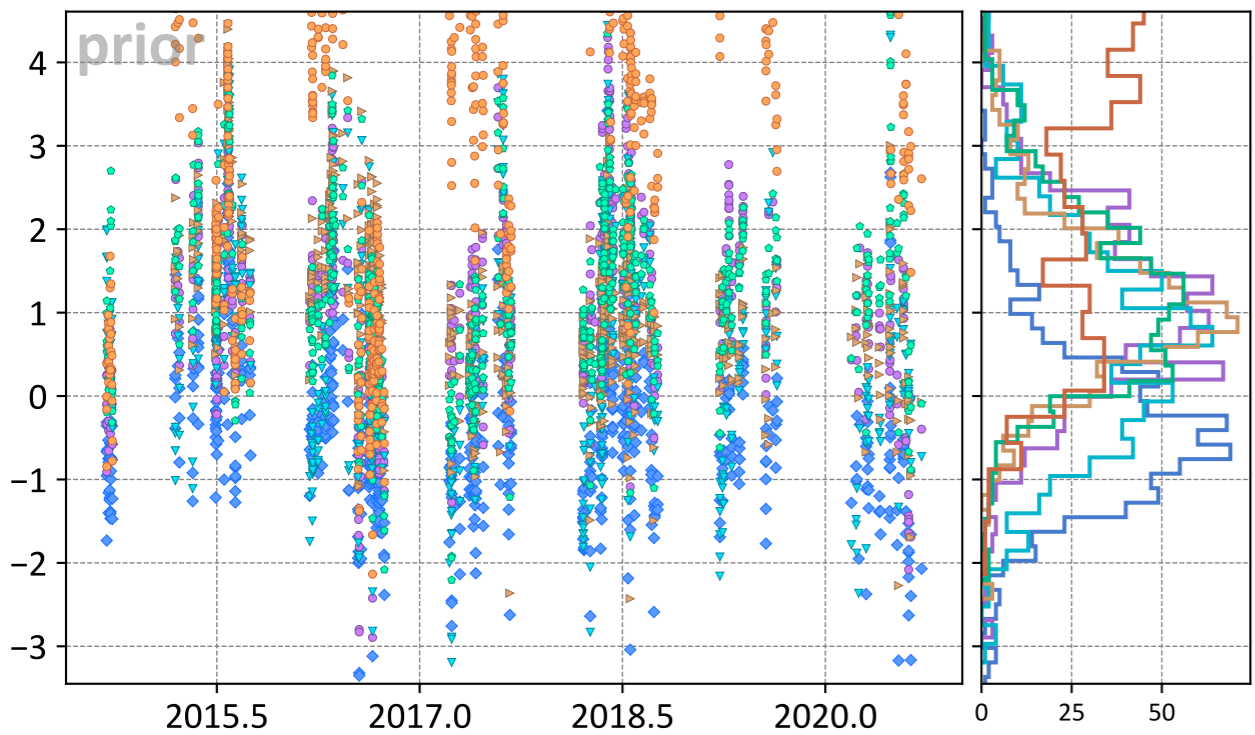
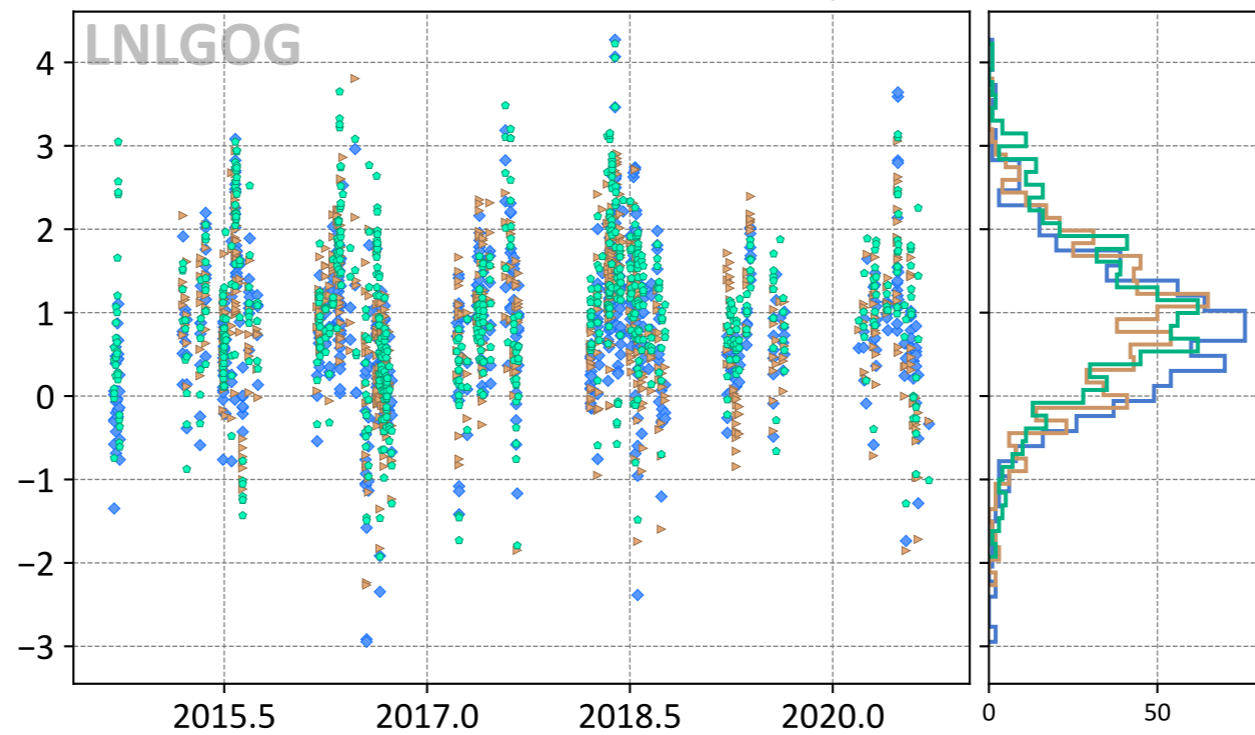


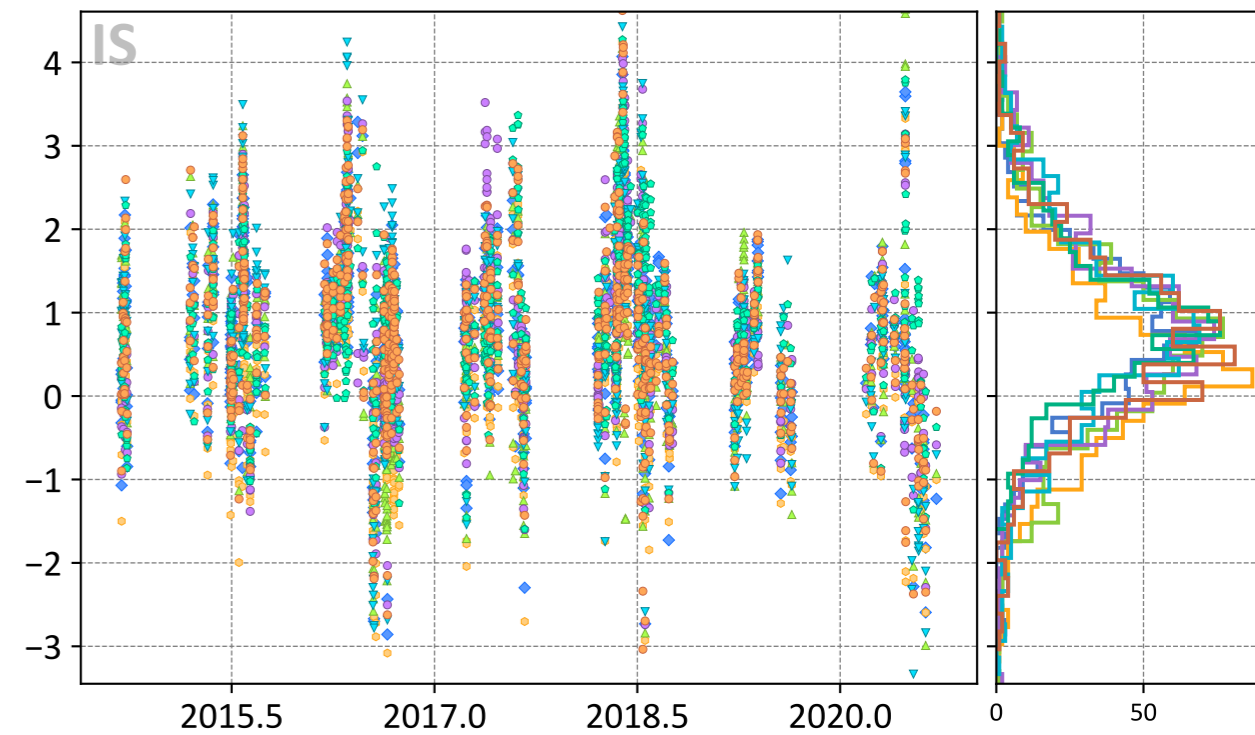
Model - TCCON XCO₂ (ppm)



- ◆ TM5-4DVAR (-0.37, 1.05)
- ▼ UT (0.75, 1.61)
- Baker (1.23, 1.63)
- CT (1.11, 1.60)
- ▶ LoFi (1.12, 1.50)
- WOMBAT (3.56, 4.25)



- ◆ TM5-4DVAR (0.77, 1.15)
- ▶ LoFi (0.88, 1.25)
- Baker (1.01, 1.38)



- ◆ TM5-4DVAR (0.73, 1.20)
- CT (0.81, 1.36)
- Baker (0.93, 1.31)
- CAMS (0.32, 1.11)
- ▼ UT (0.82, 1.44)
- WOMBAT (0.75, 1.30)
- ▲ CSU (0.61, 1.35)