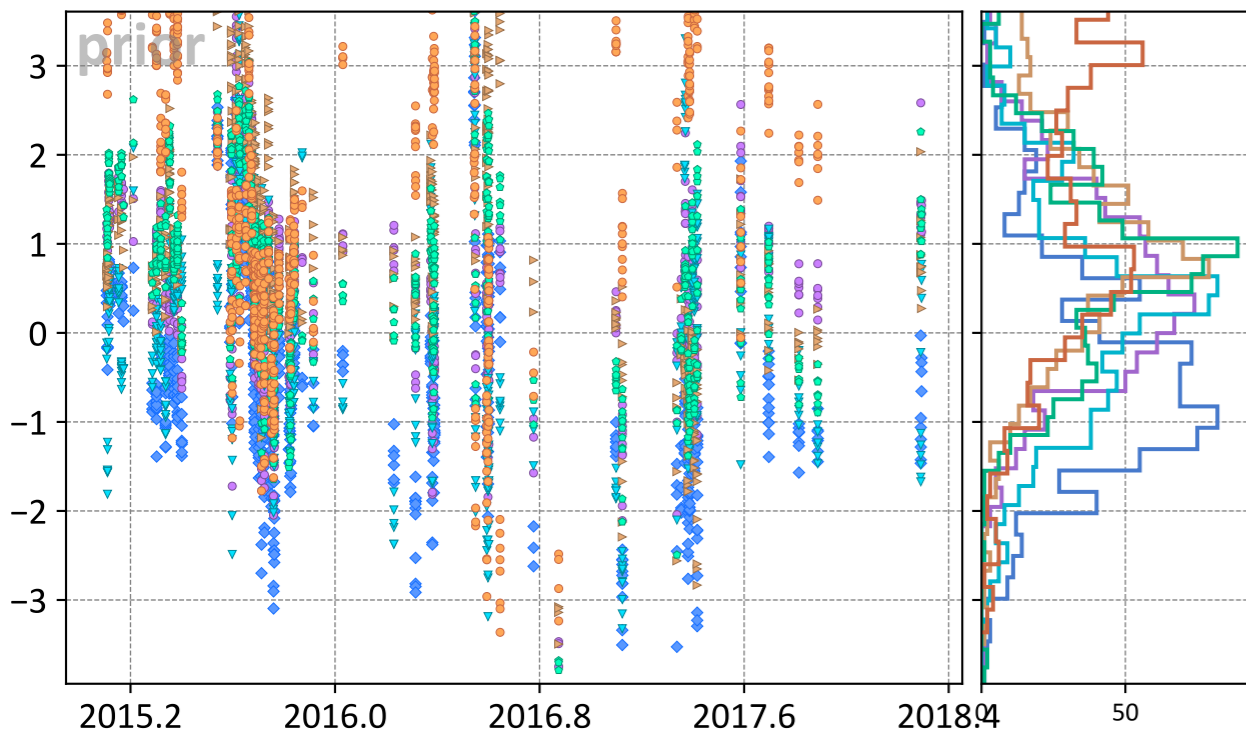
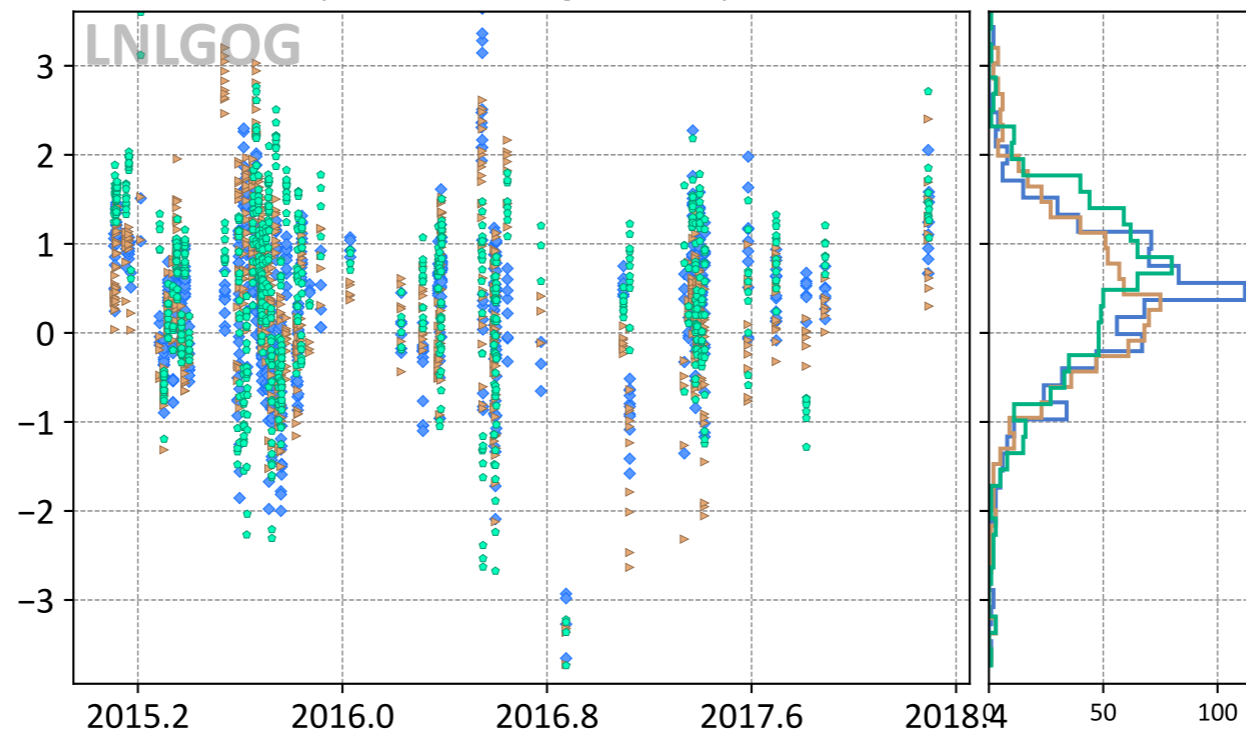


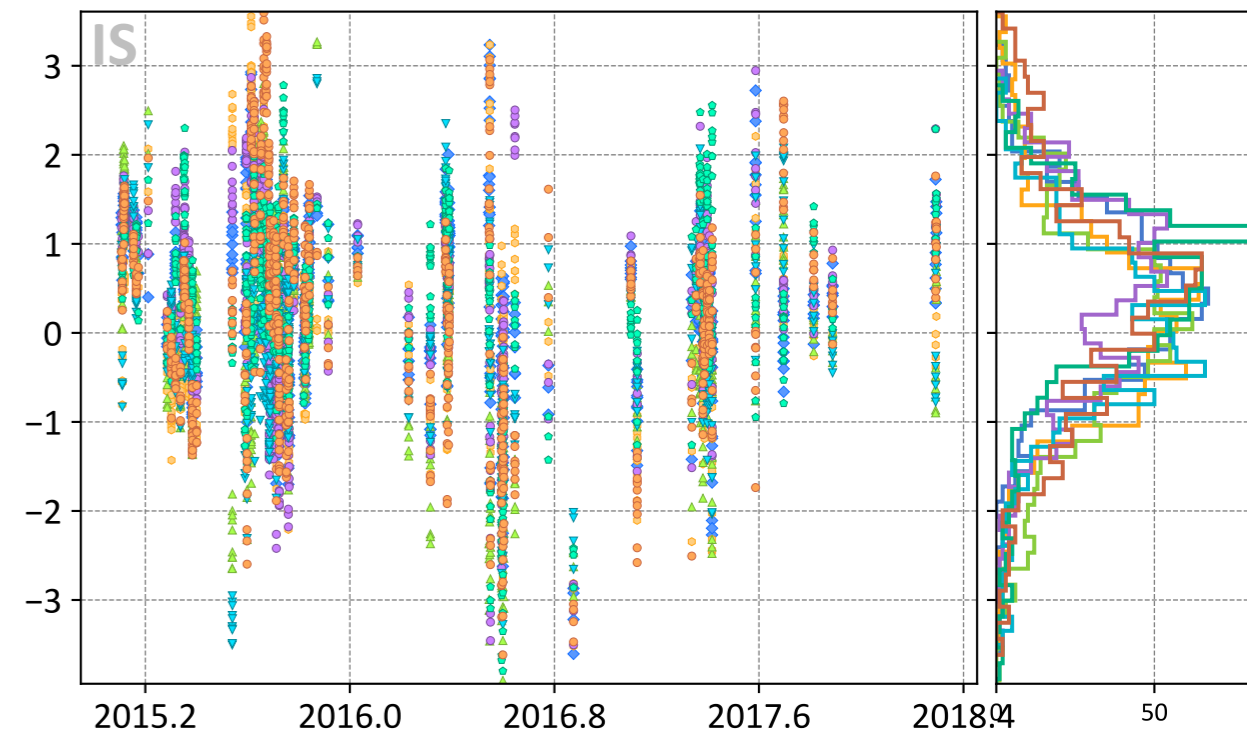
Model - TCCON XCO₂ (ppm)



- ◆ TM5-4DVAR (-0.43, 1.35)
- ▼ UT (0.19, 1.32)
- Baker (0.71, 1.30)
- CT (0.57, 1.28)
- ▶ LoFi (1.09, 1.70)
- WOMBAT (1.89, 2.68)



- ◆ TM5-4DVAR (0.37, 0.93)
- ▶ LoFi (0.38, 0.98)
- Baker (0.50, 1.08)



- ◆ TM5-4DVAR (0.42, 1.02)
- CAMS (0.16, 1.05)
- ▲ CSU (-0.02, 1.17)
- CT (0.39, 1.16)
- ▼ UT (0.03, 0.99)
- Baker (0.45, 1.12)
- WOMBAT (0.32, 1.29)