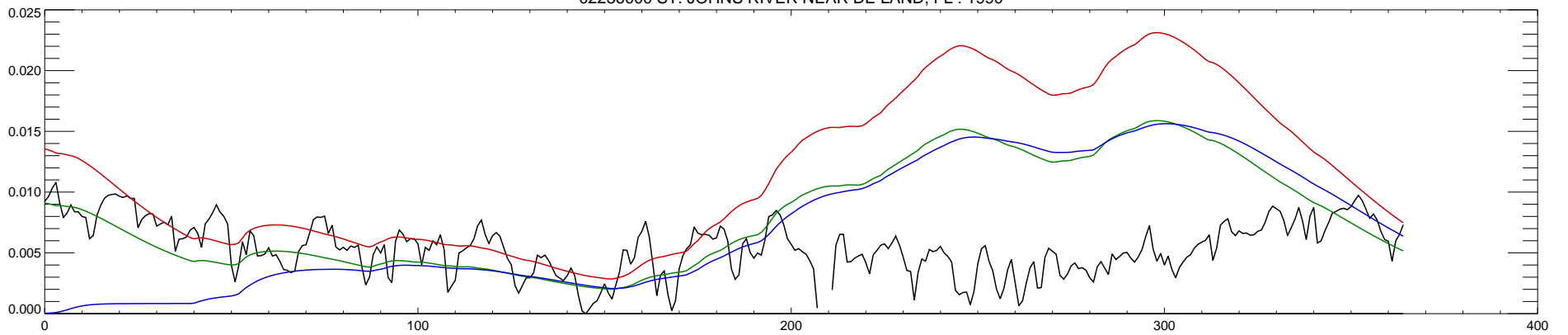
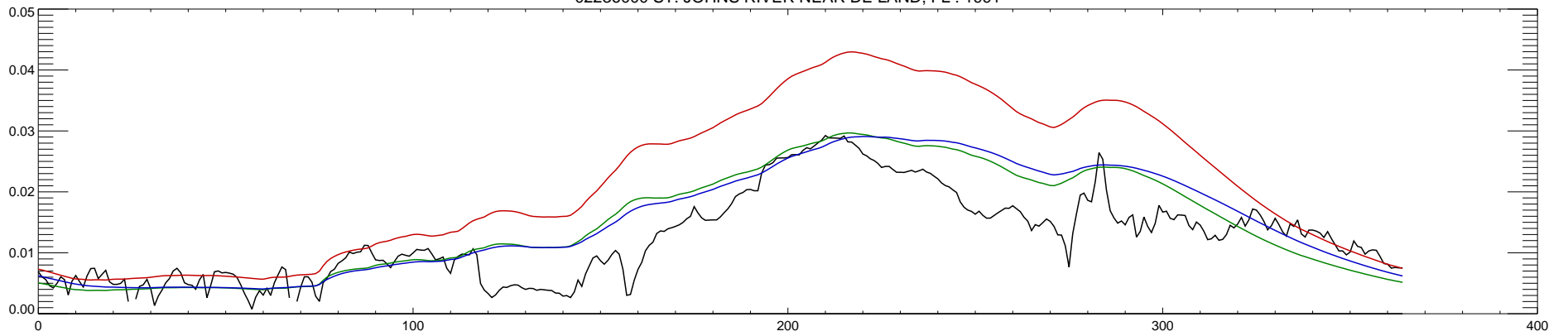


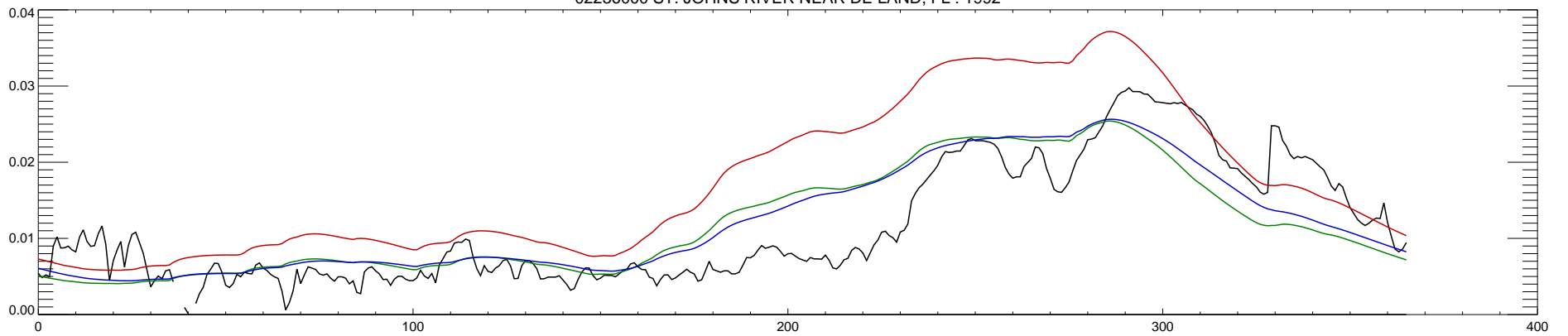
02236000 ST. JOHNS RIVER NEAR DE LAND, FL : 1990



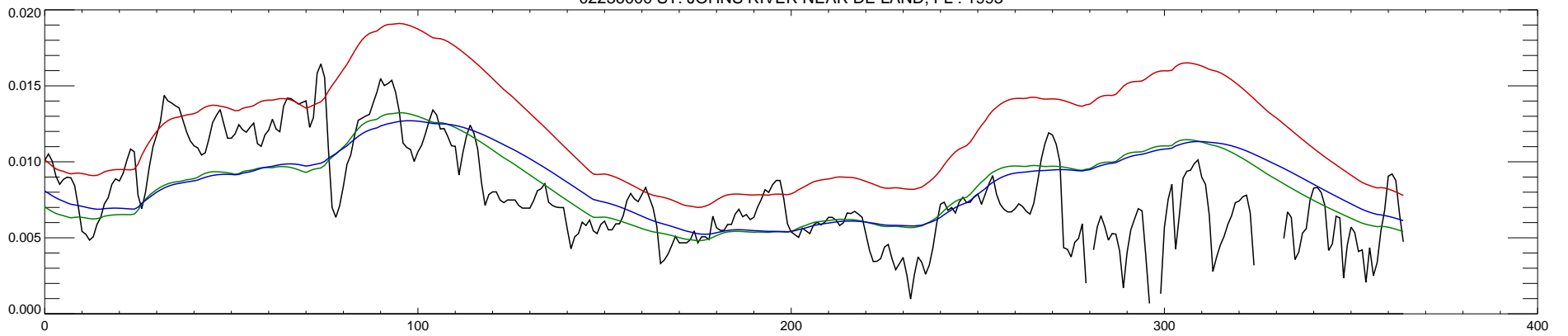
02236000 ST. JOHNS RIVER NEAR DE LAND, FL : 1991



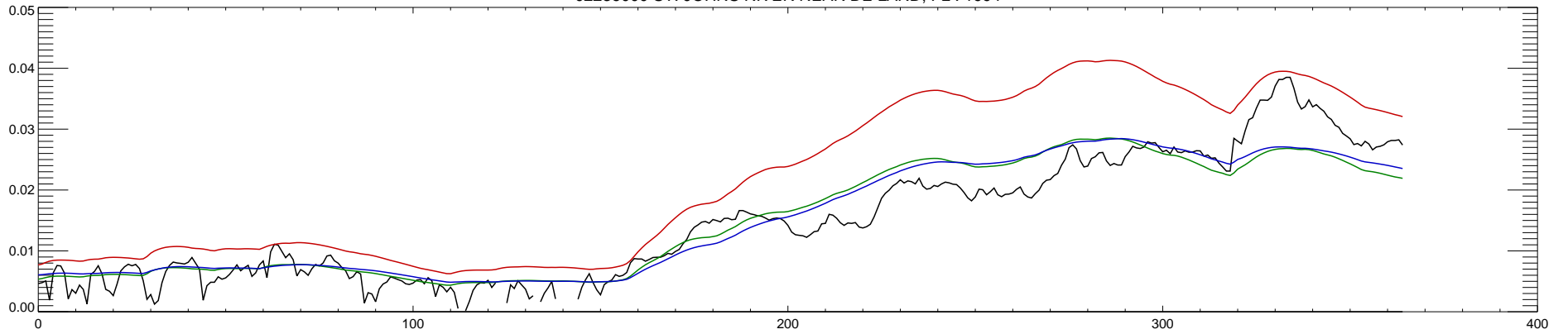
02236000 ST. JOHNS RIVER NEAR DE LAND, FL : 1992



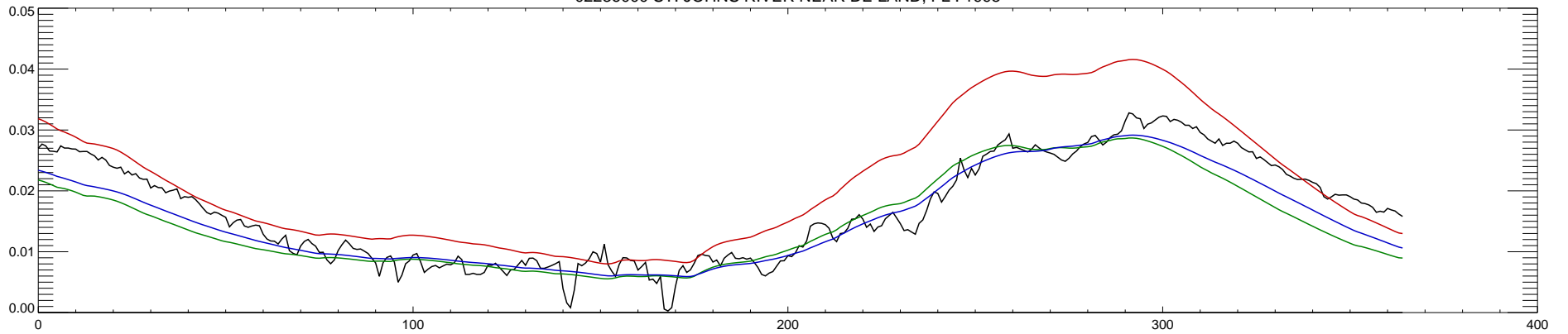
02236000 ST. JOHNS RIVER NEAR DE LAND, FL : 1993



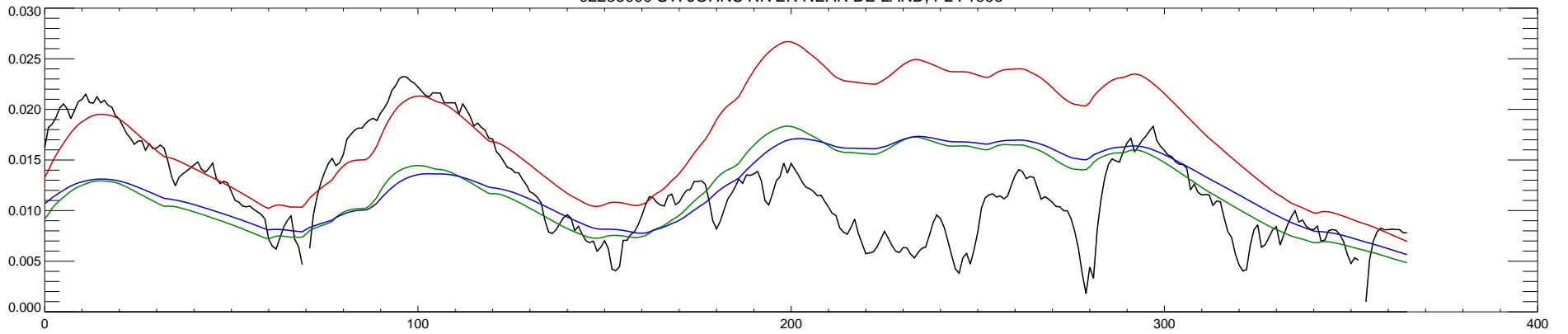
02236000 ST. JOHNS RIVER NEAR DE LAND, FL : 1994



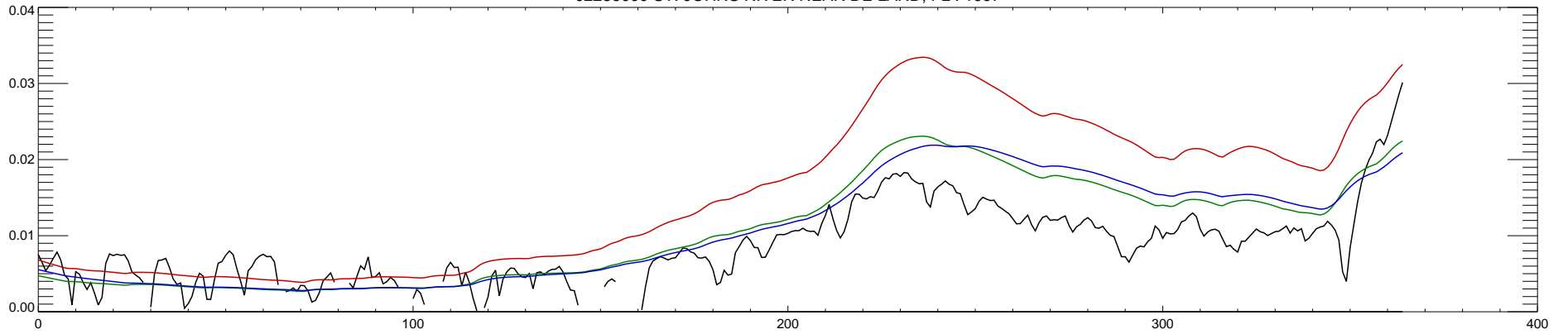
02236000 ST. JOHNS RIVER NEAR DE LAND, FL : 1995



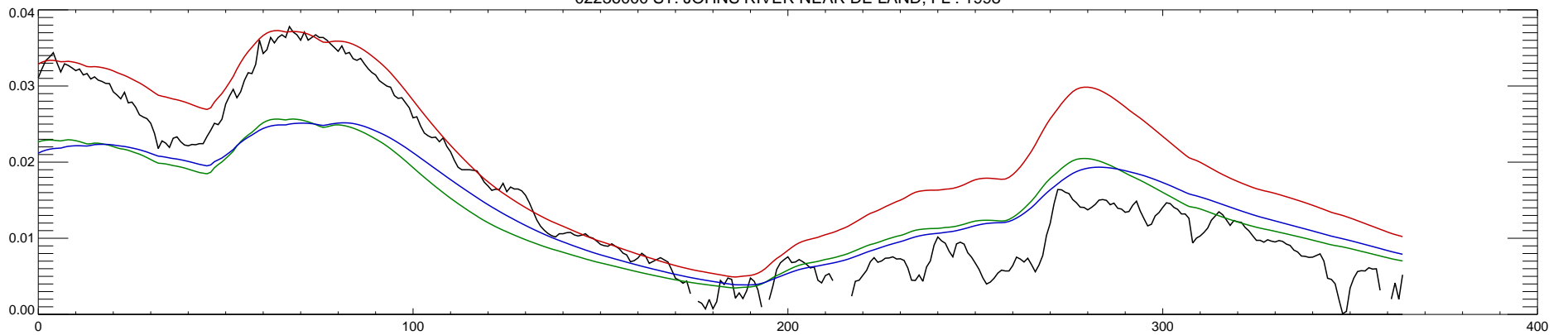
02236000 ST. JOHNS RIVER NEAR DE LAND, FL : 1996



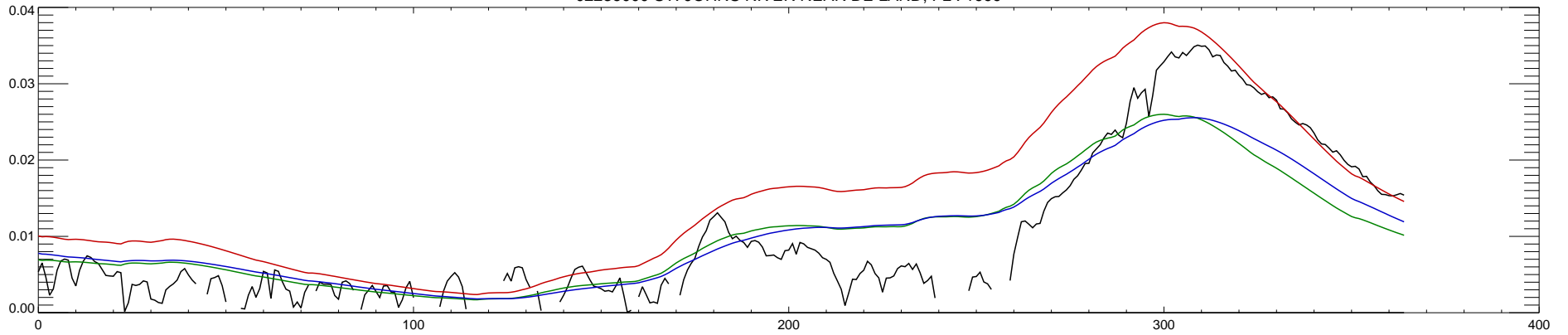
02236000 ST. JOHNS RIVER NEAR DE LAND, FL : 1997



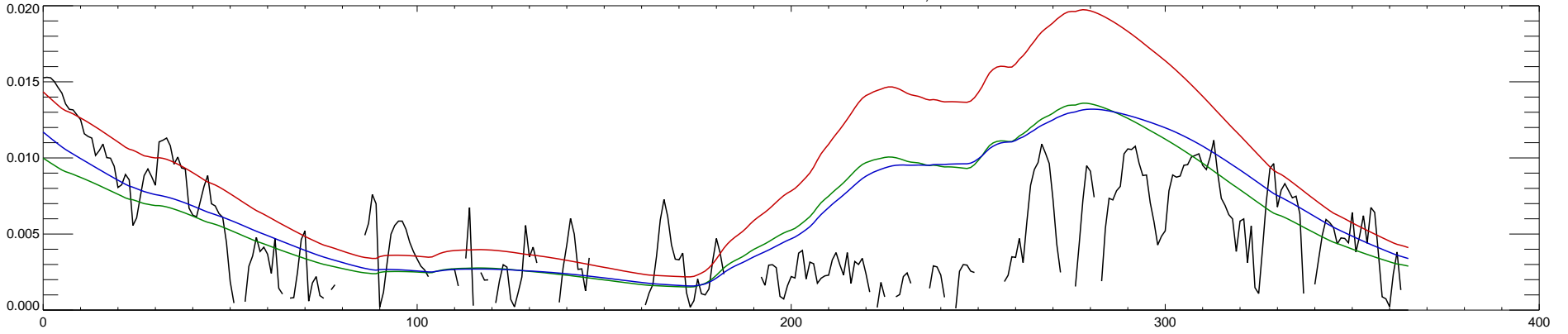
02236000 ST. JOHNS RIVER NEAR DE LAND, FL : 1998



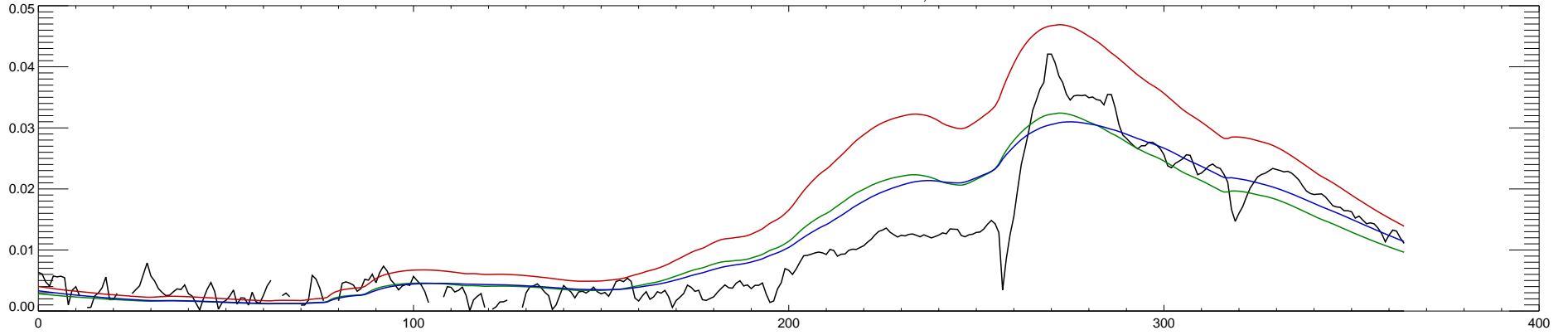
02236000 ST. JOHNS RIVER NEAR DE LAND, FL : 1999



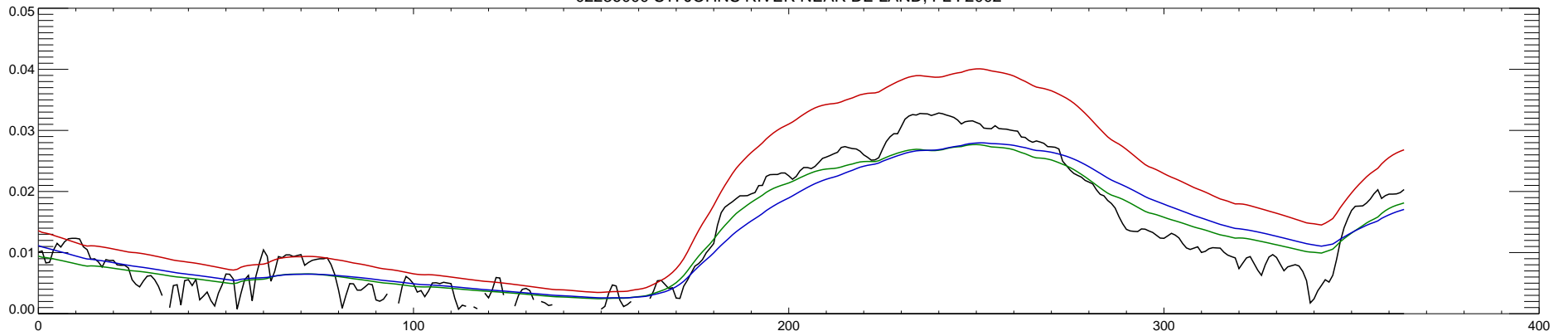
02236000 ST. JOHNS RIVER NEAR DE LAND, FL : 2000



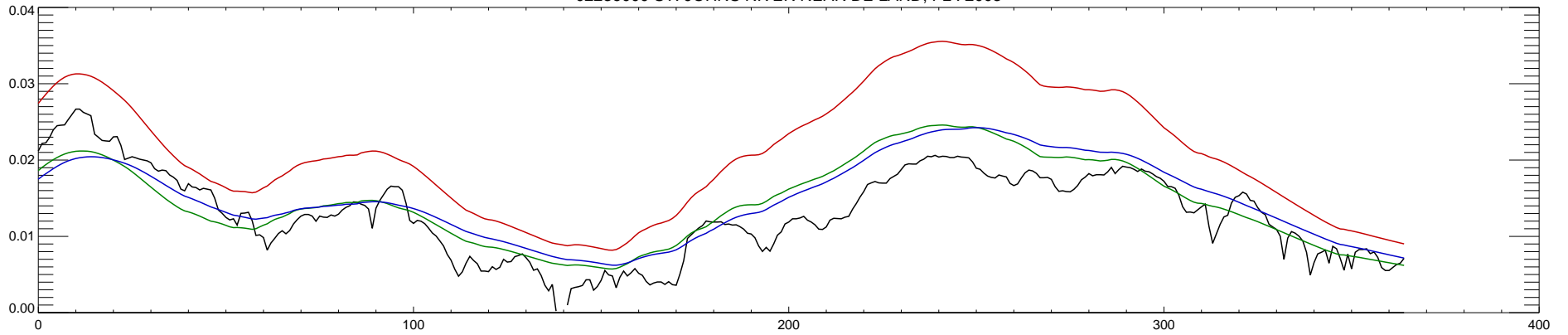
02236000 ST. JOHNS RIVER NEAR DE LAND, FL : 2001



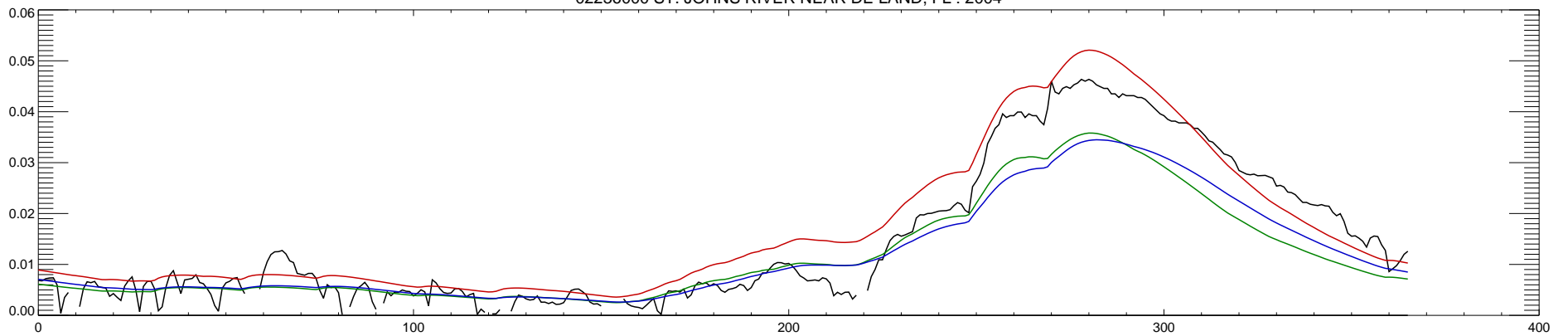
02236000 ST. JOHNS RIVER NEAR DE LAND, FL : 2002



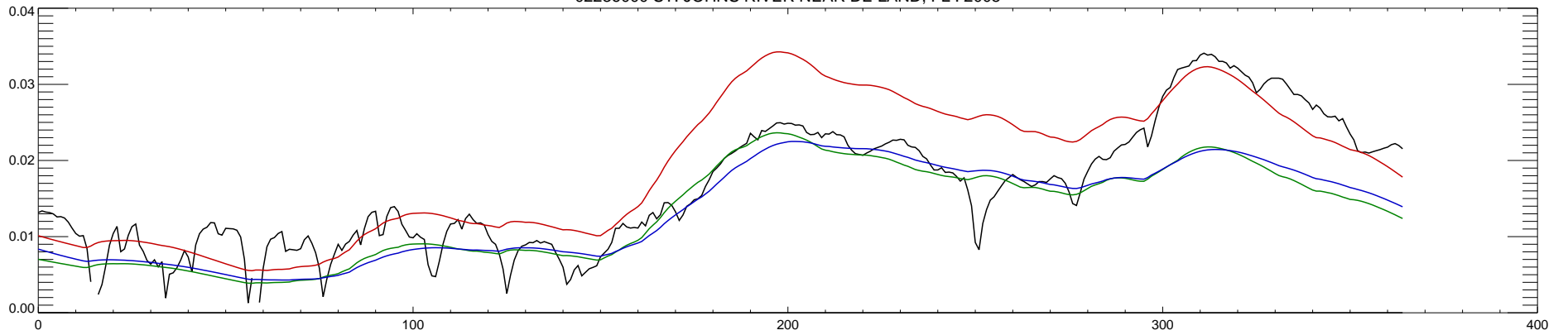
02236000 ST. JOHNS RIVER NEAR DE LAND, FL : 2003



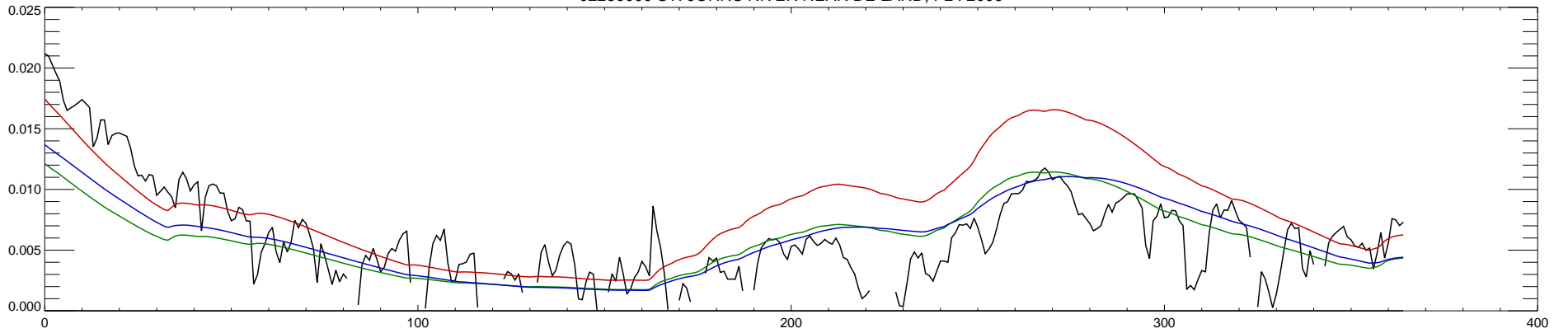
02236000 ST. JOHNS RIVER NEAR DE LAND, FL : 2004



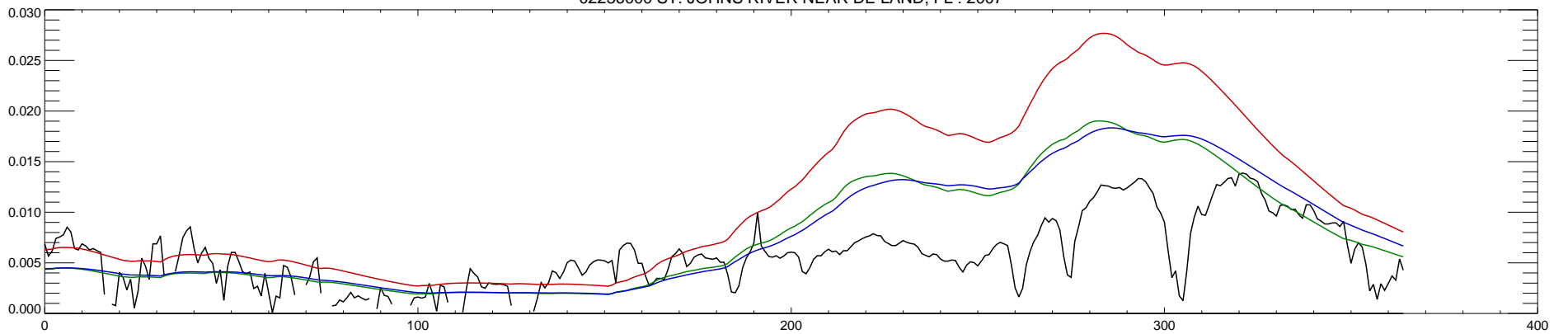
02236000 ST. JOHNS RIVER NEAR DE LAND, FL : 2005



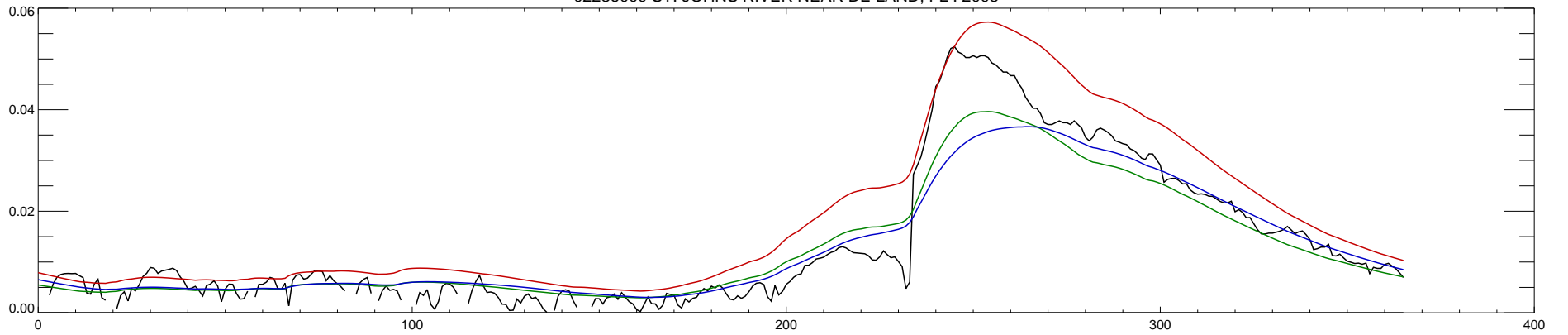
02236000 ST. JOHNS RIVER NEAR DE LAND, FL : 2006



02236000 ST. JOHNS RIVER NEAR DE LAND, FL : 2007



02236000 ST. JOHNS RIVER NEAR DE LAND, FL : 2008



02236000 ST. JOHNS RIVER NEAR DE LAND, FL : 2009

