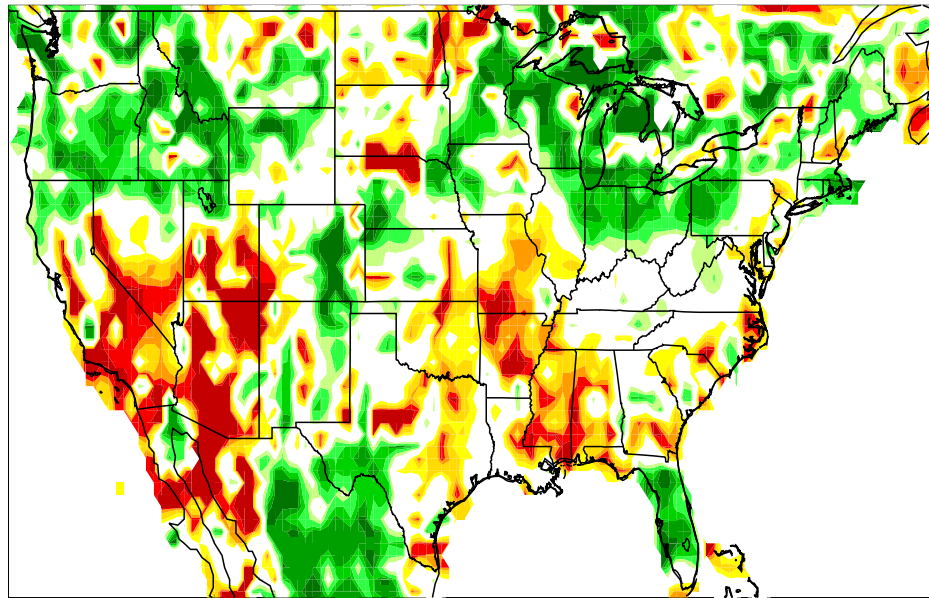
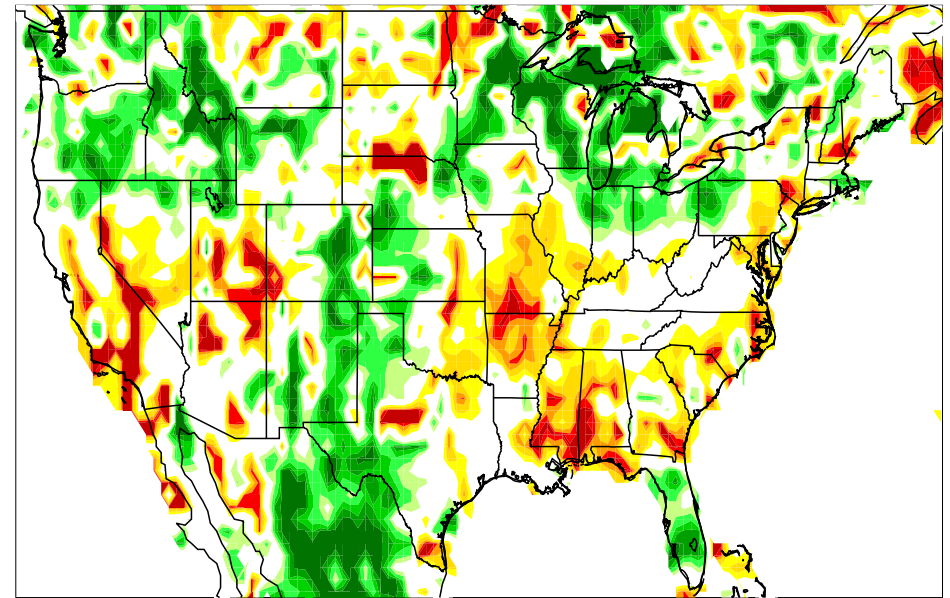


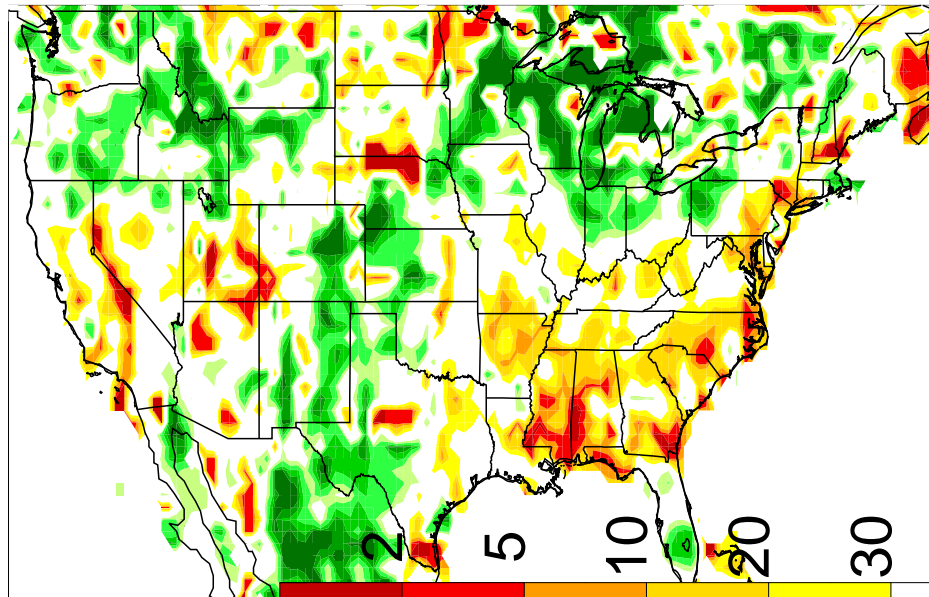
Soil moisture percentile from NASA GEOS-5 S2S-2_1 forecast system
Initial Conditions: 27 Nov 2017



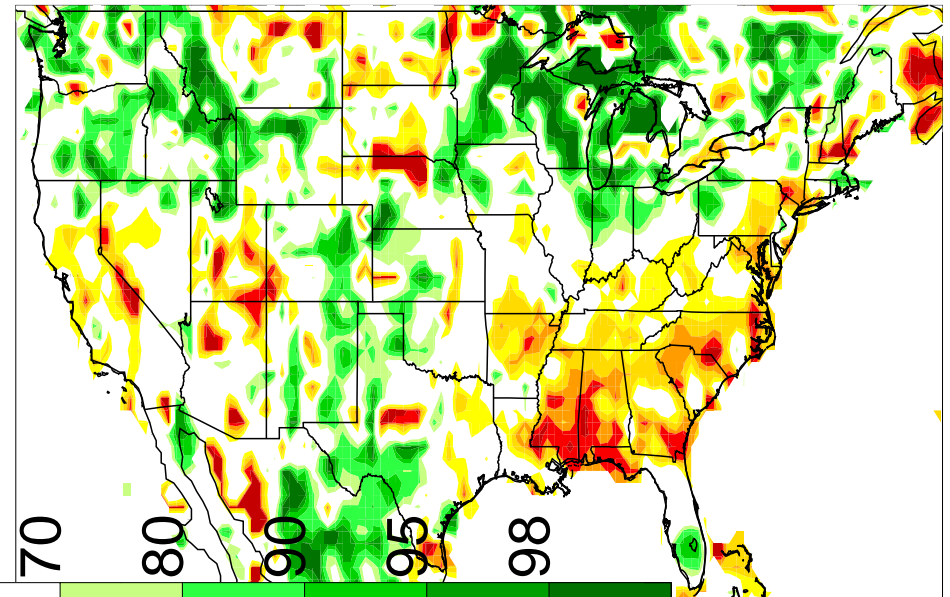
Forecast: 01 Jan 2018



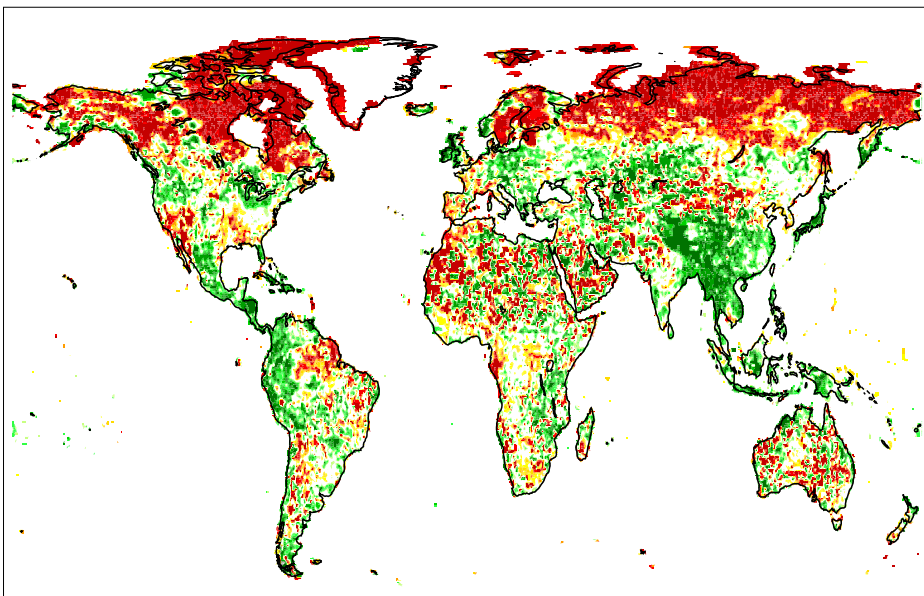
Forecast: 01 Feb 2018



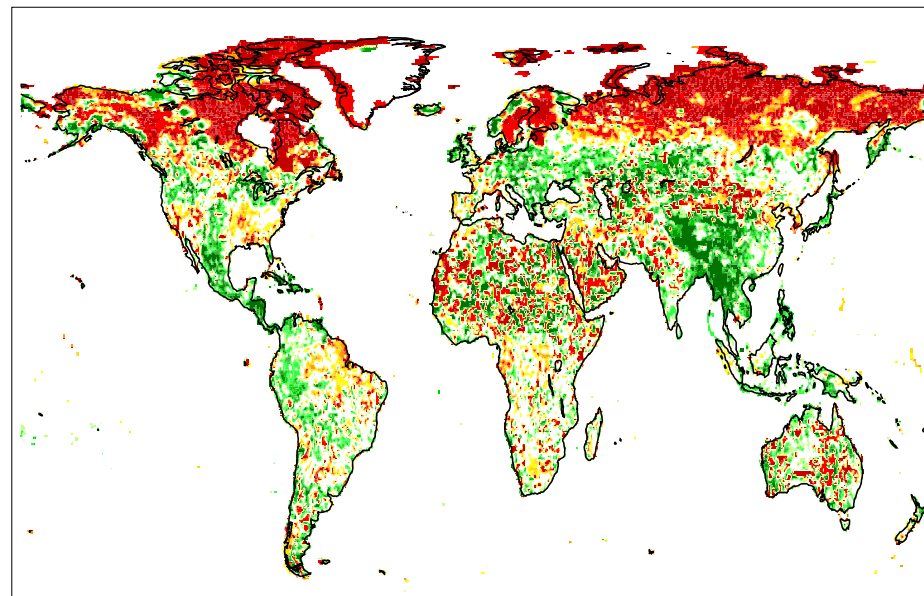
Forecast: 01 Mar 2018



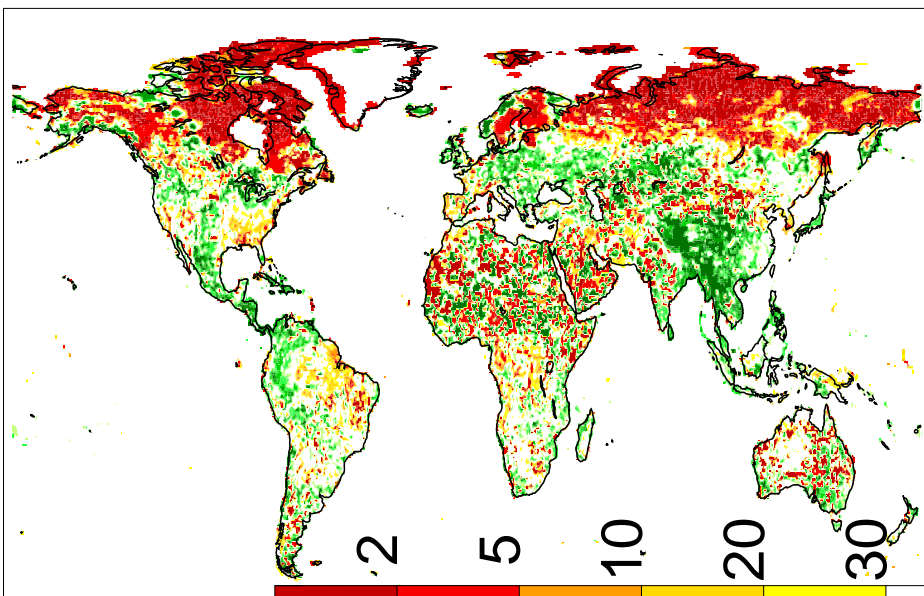
Initial Conditions: 27 Nov 2017



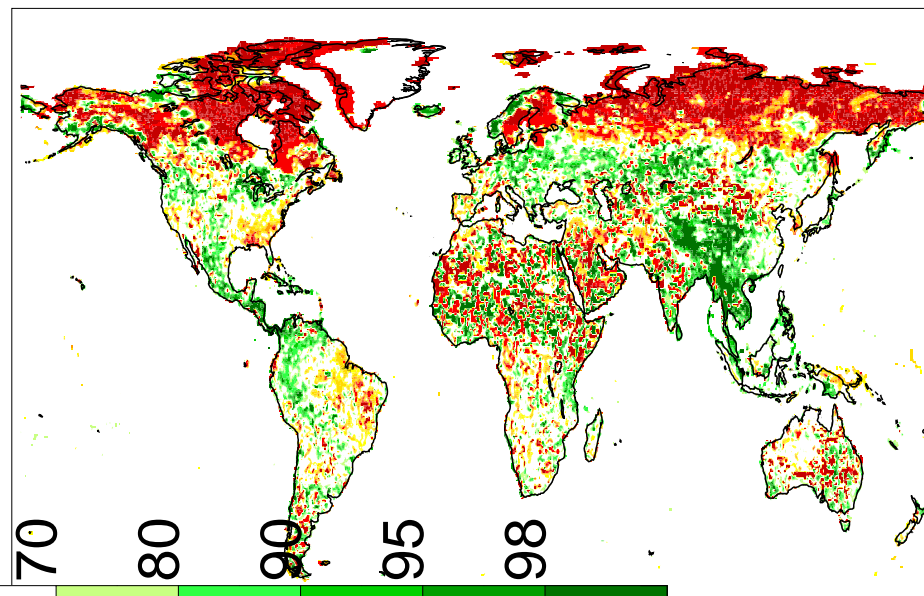
Forecast: 01 Jan 2018



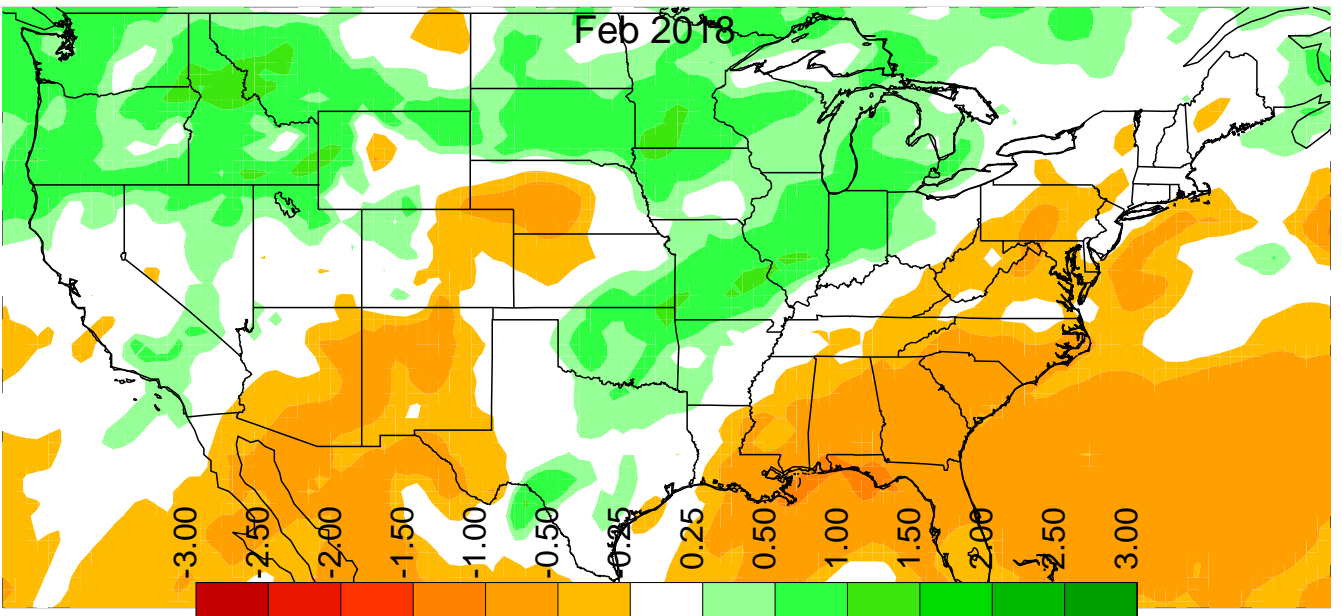
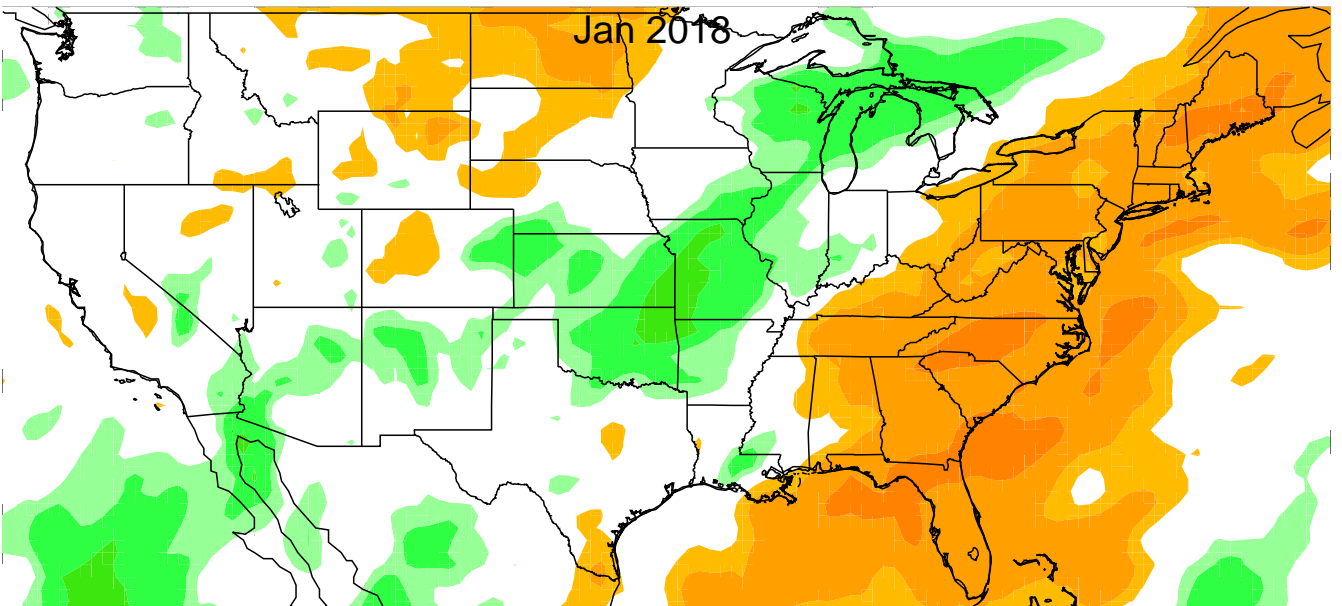
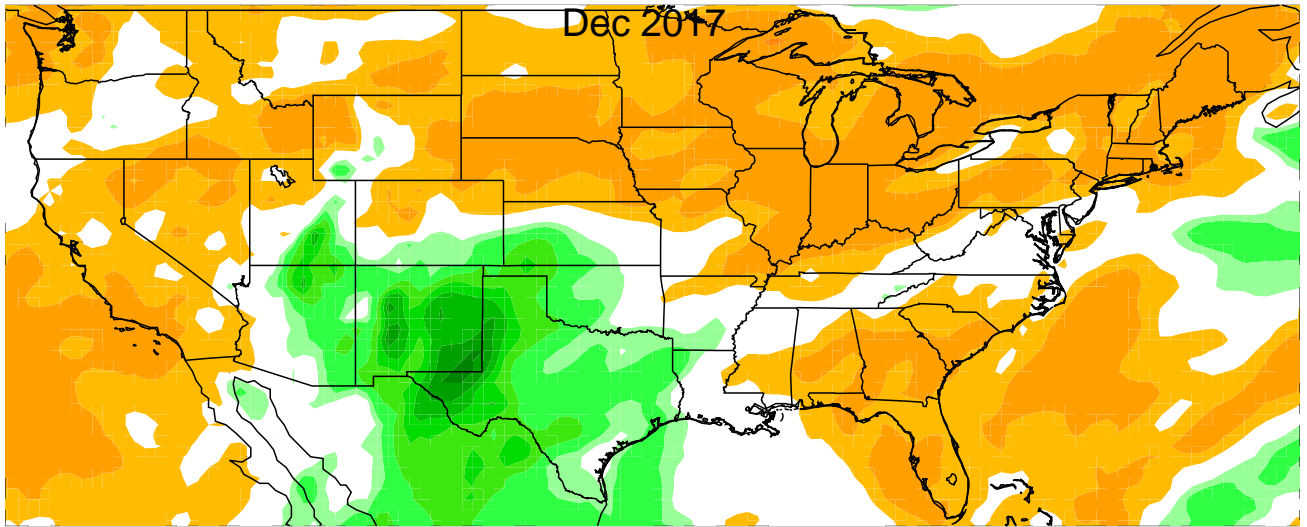
Forecast: 01 Feb 2018



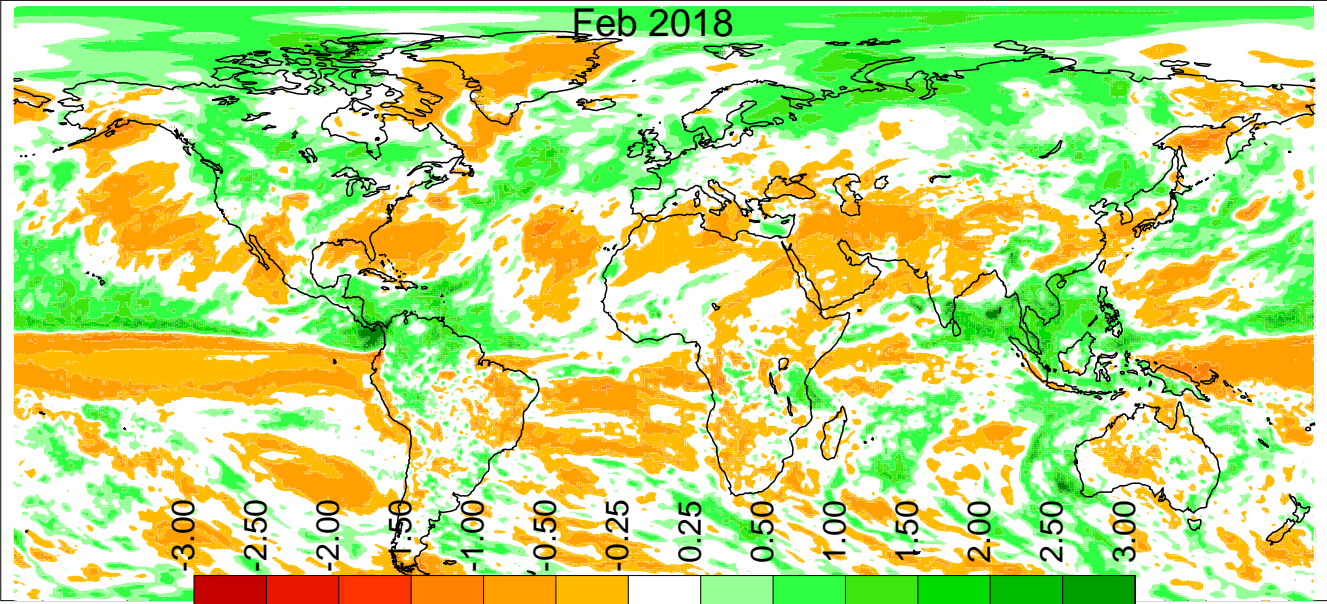
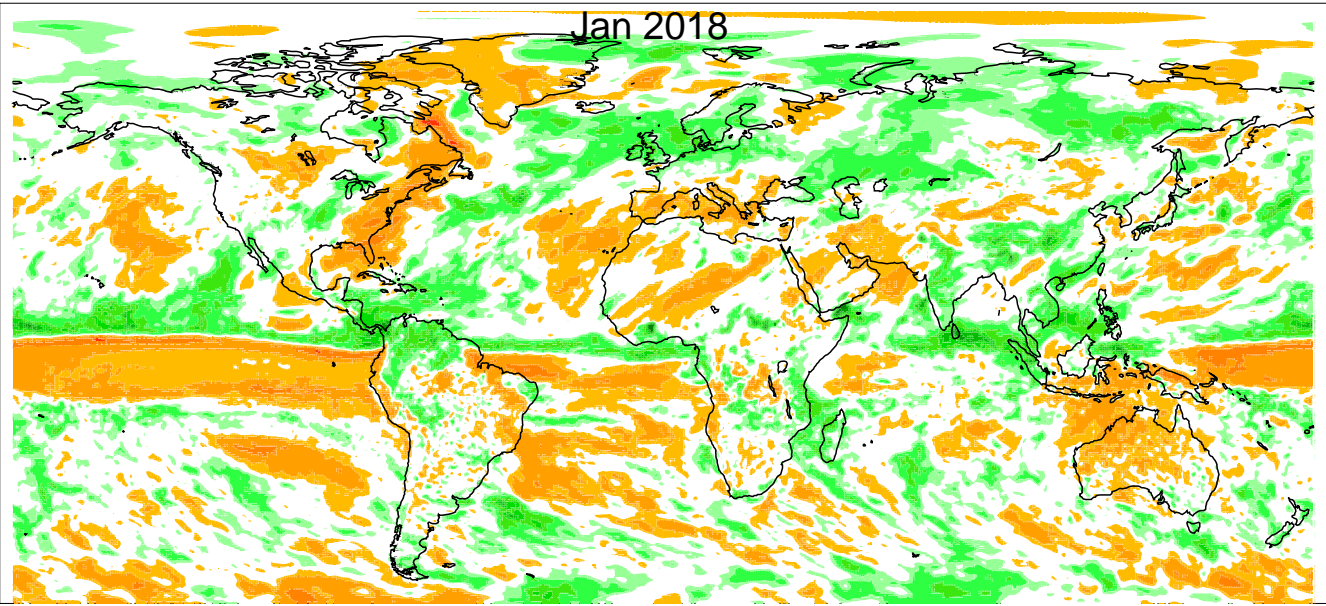
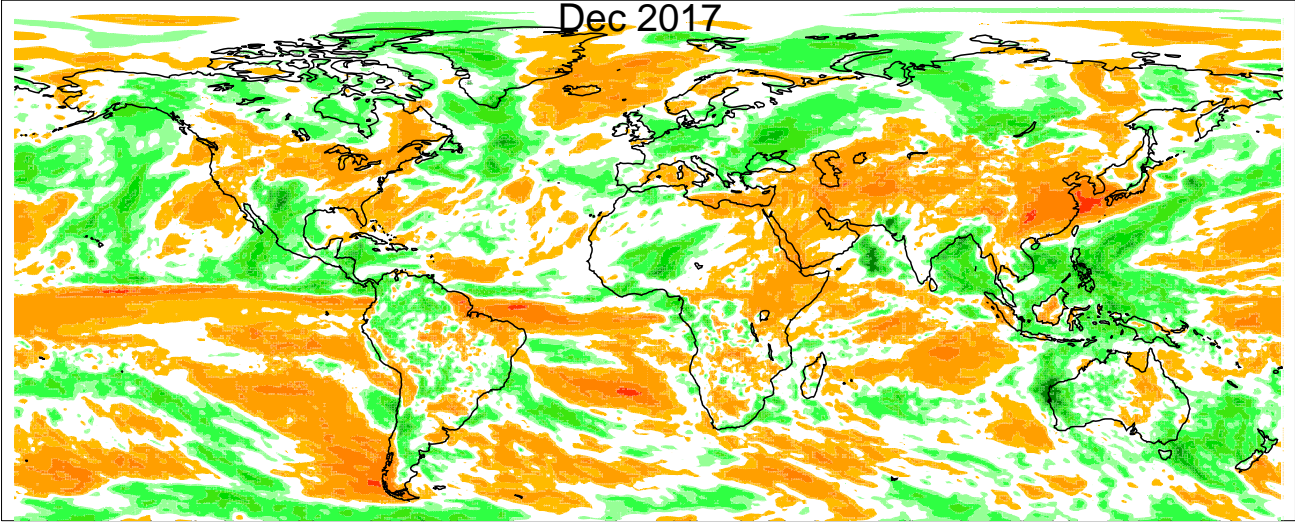
Forecast: 01 Mar 2018



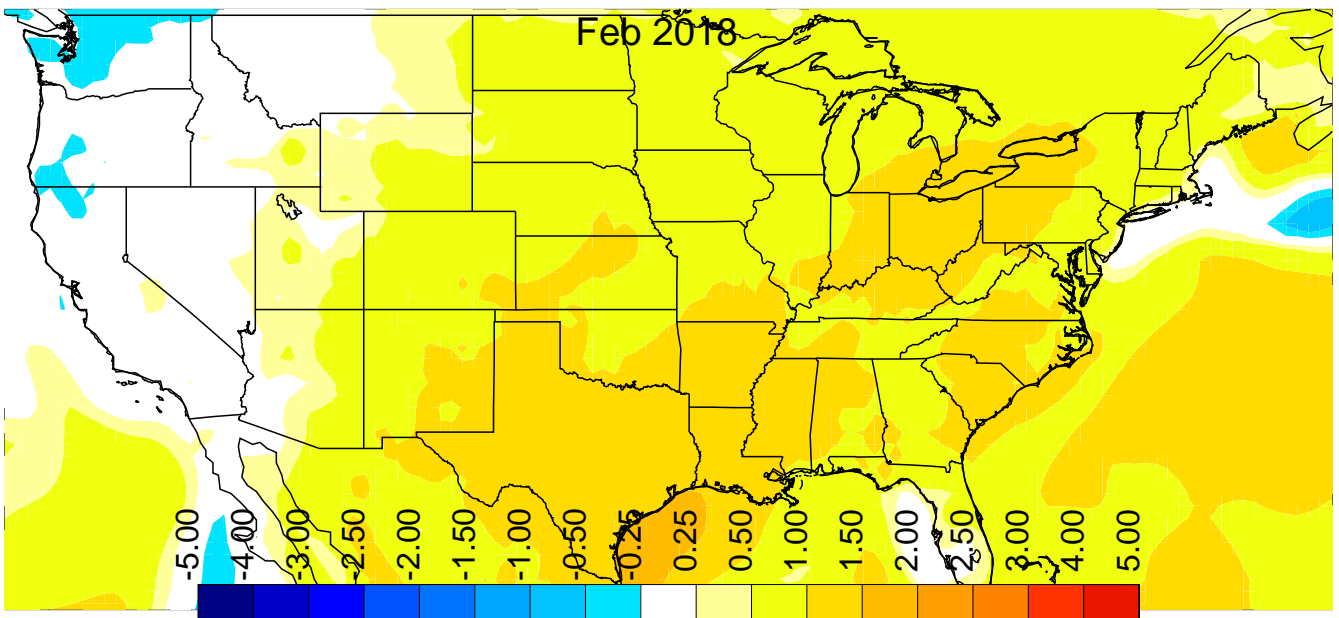
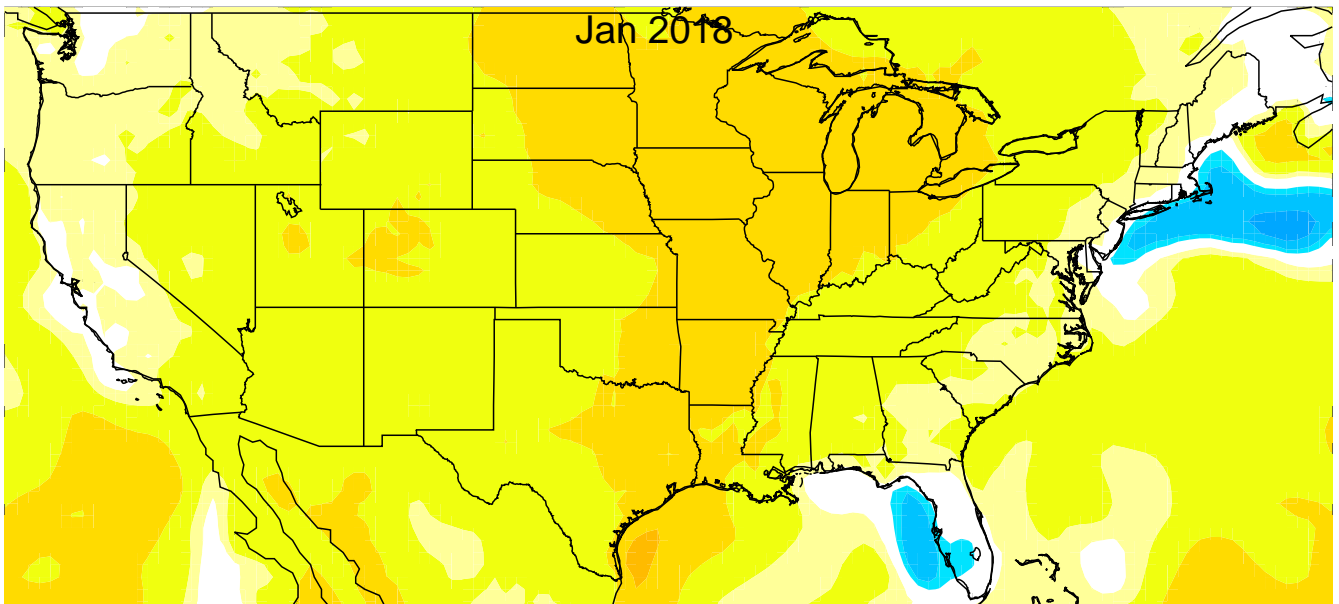
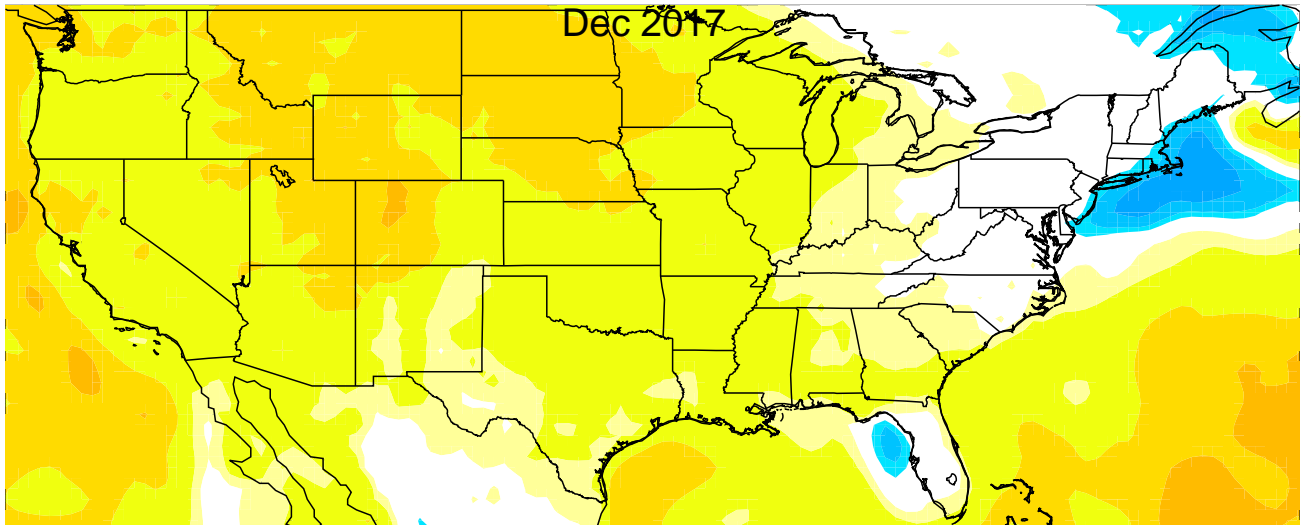
NASA GEOS-5 PRECTOT forecast anomaly



NASA GEOS-5 PRECTOT forecast anomaly



NASA GEOS-5 T2M forecast anomaly



NASA GEOS-5 T2M forecast anomaly

