

ABOVE Regional Weather Briefing

Based on the GMAO GEOS meteorology and aerosol forecast fields
Model Initialized 00z 10 July 2017

Note: Saskatchewan (SK), Alberta (AB), Manitoba (MB), Northwest Territory (NWT), Yukon Territory (YKT), British Columbia (BC)

PAFA = Fairbanks Airport, Alaska

PASC = Deadhorse Airport, Prudhoe Bay Alaska

PABR = Barrow

Day-1 Forecast**Valid 1500z 11 July through 2359z 11 July**

There was an eruption yesterday at Bogoslof Volcano in the Aleutian area. Fires continue to be very active in Alaska and Canada at this time. A weak low pressure system is forecast to move through the lower half of the state from the Canadian line to East of the Anchorage area. Low clouds and precipitation in the beginning of this period are mainly near Galena and in the PAFA area. The clouds and rain gradually move to the south towards the end of the period. PASC and PABR and the north slopes are free of precipitation early in the period, but showers advance from the Arctic Ocean and approach PABR later in the period. The North Slope begins the period rain free but showers form along the Brooks Range just a few hours into this period. Yukon Flats and Ft. Yukon look mostly clear, but it may be tough getting out of PAFA due to the presence of clouds and rain.

Day-2 Forecast**Valid 1500z 12 July through 2359z 12 July**

High values of aerosol optical thickness from fires will be approaching the Yukon Flats region. An area of clouds and rain sits along the north shore from PABR to PASC and south to the Brooks Range. This area moves to the southeast and will approach the Yukon Flats and Ft. Yukon area by end of period. If the clouds near PAFA allow, it could be a good chance for an early flight in the Yukon Flats direction. Thin high clouds approach the Seward Peninsula from the northwest. Galena and west through the Seward Peninsula look like they may be mostly clear.

Day-3 Outlook**Valid 1500z 13 July through 2359z 13 July**

The entire state is under the influence of smoke haze with the largest values of aerosol optical thickness in the northeast quadrant of the state especially over the North Slopes and in the Ft. Yukon area. A weak low pressure system centered over the northeast Kenai Peninsula keeps clouds and rain in and near the PAFA region. PABR to PASC flights or flights in the western Seward Peninsula may be possible.

--

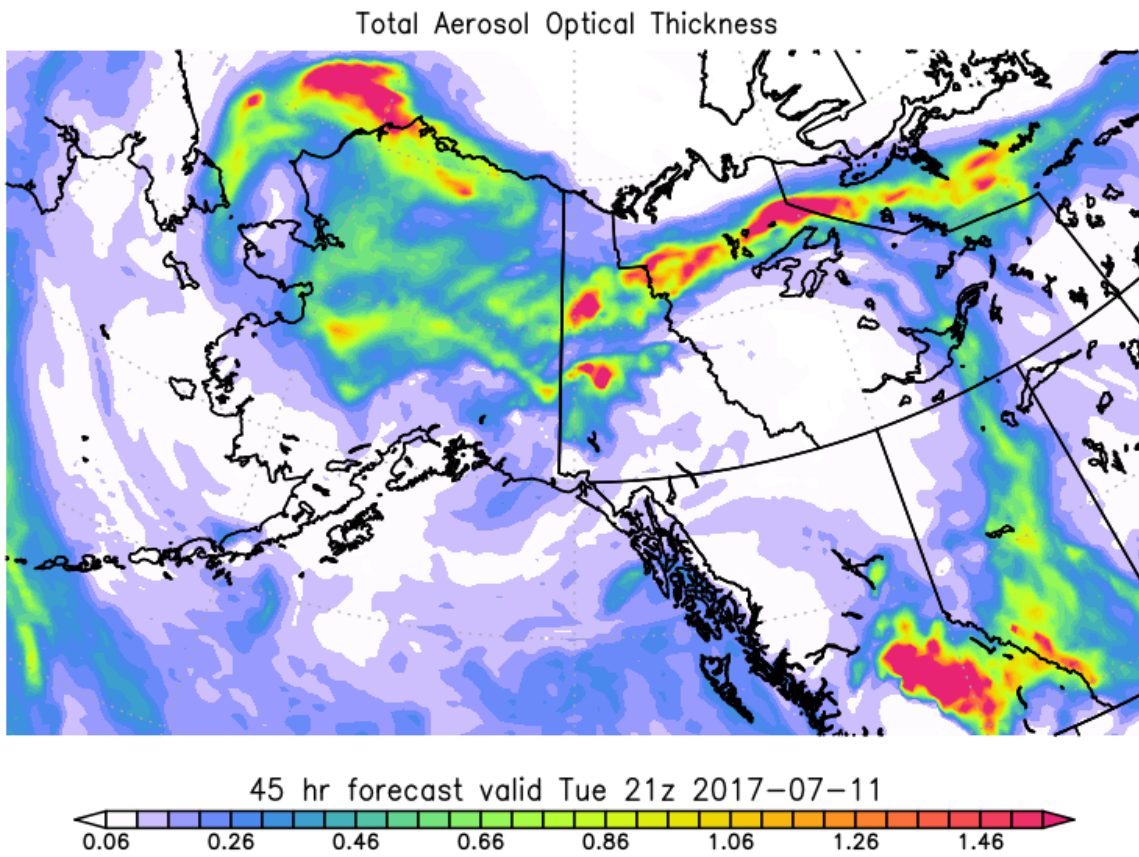
Austin Conaty, SSAI Global Modeling and Assimilation Office
301-614-6149 (ph) NASA Goddard Space Flight Center
301-614-6297 (fax) Code 610.1 Greenbelt, MD 20771

Austin.L.Conaty@nasa.gov

<http://gmao.gsfc.nasa.gov>

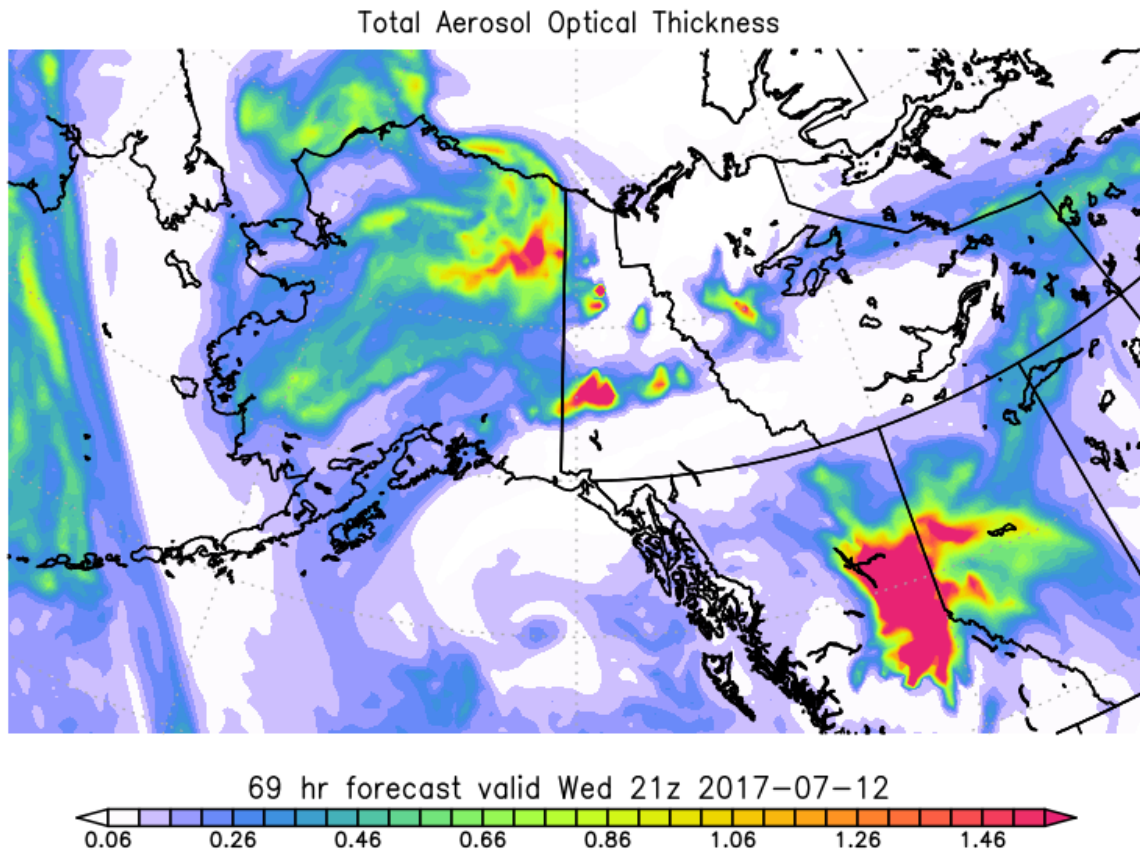
f516_fp.7totaot.045.above_sm.png

NASA/GMAO - GEOS-5 Forecast Initialized on 00z 2017-07-10



f516_fp.7totaot.069.above_sm.png

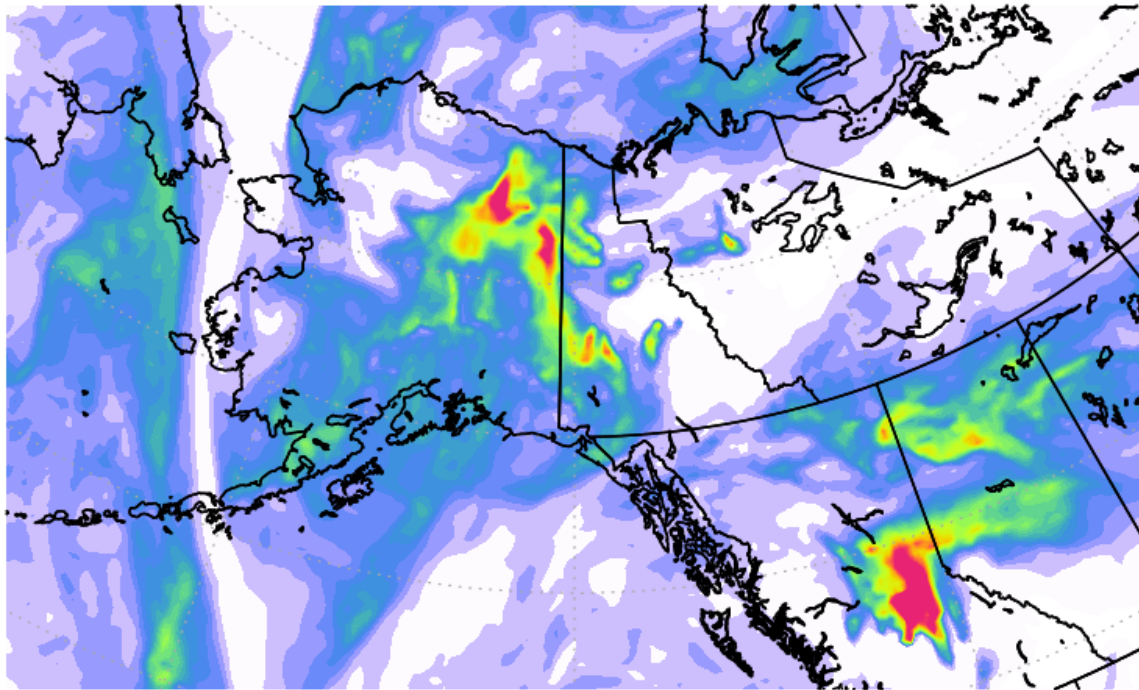
NASA/GMAO - GEOS-5 Forecast Initialized on 00z 2017-07-10



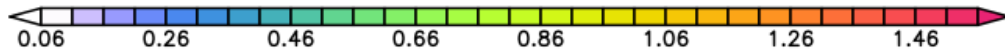
f516_fp.7totaot.093.above_sm.png

NASA/GMAO - GEOS-5 Forecast Initialized on 00z 2017-07-10

Total Aerosol Optical Thickness

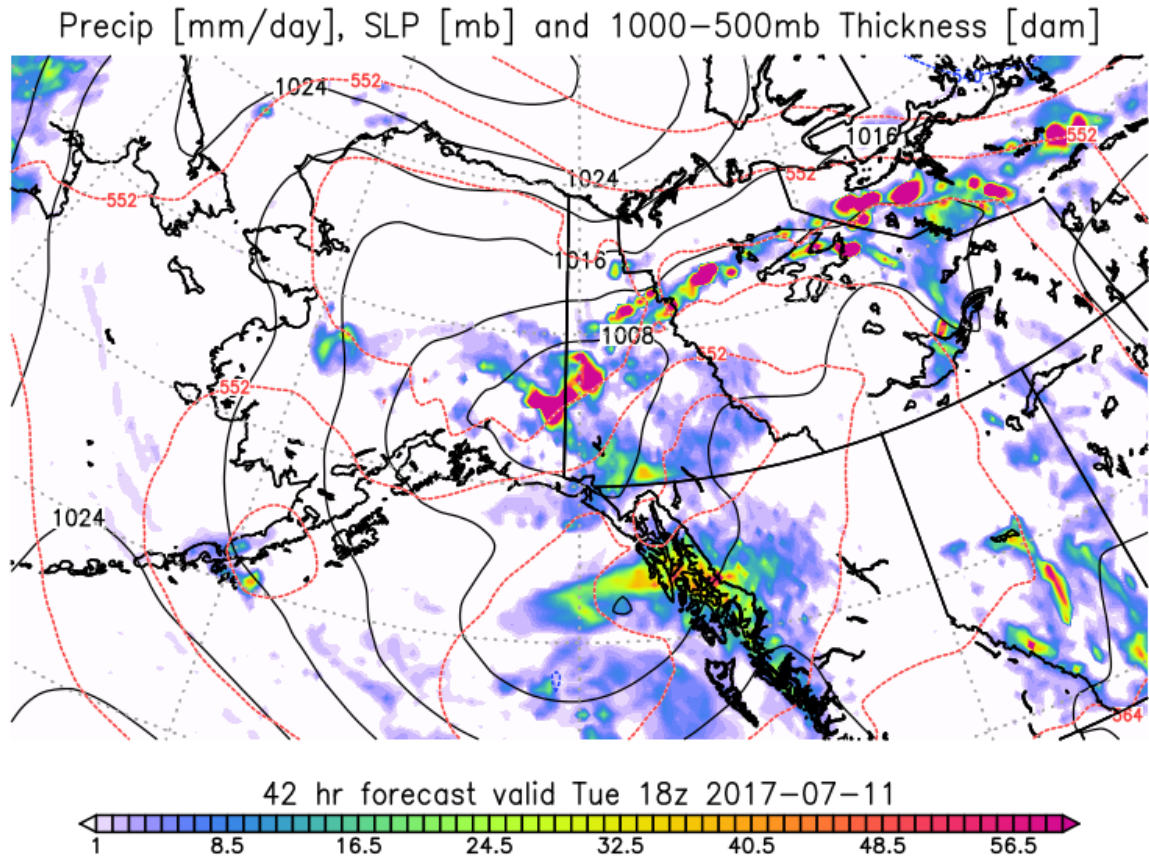


93 hr forecast valid Thu 21z 2017-07-13



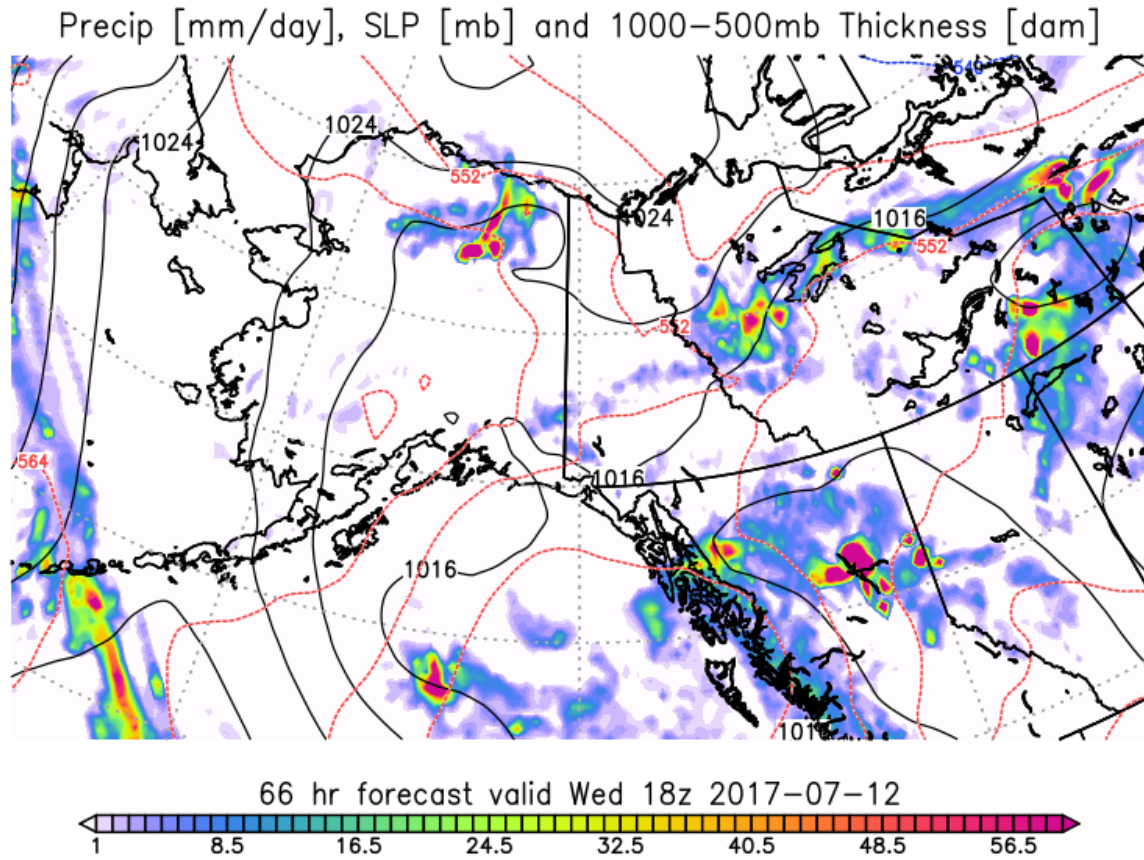
fp.8prec.sfc.042.above_sm.png

NASA/GMAO – GEOS-5 Forecast Initialized on 00z 2017-07-10



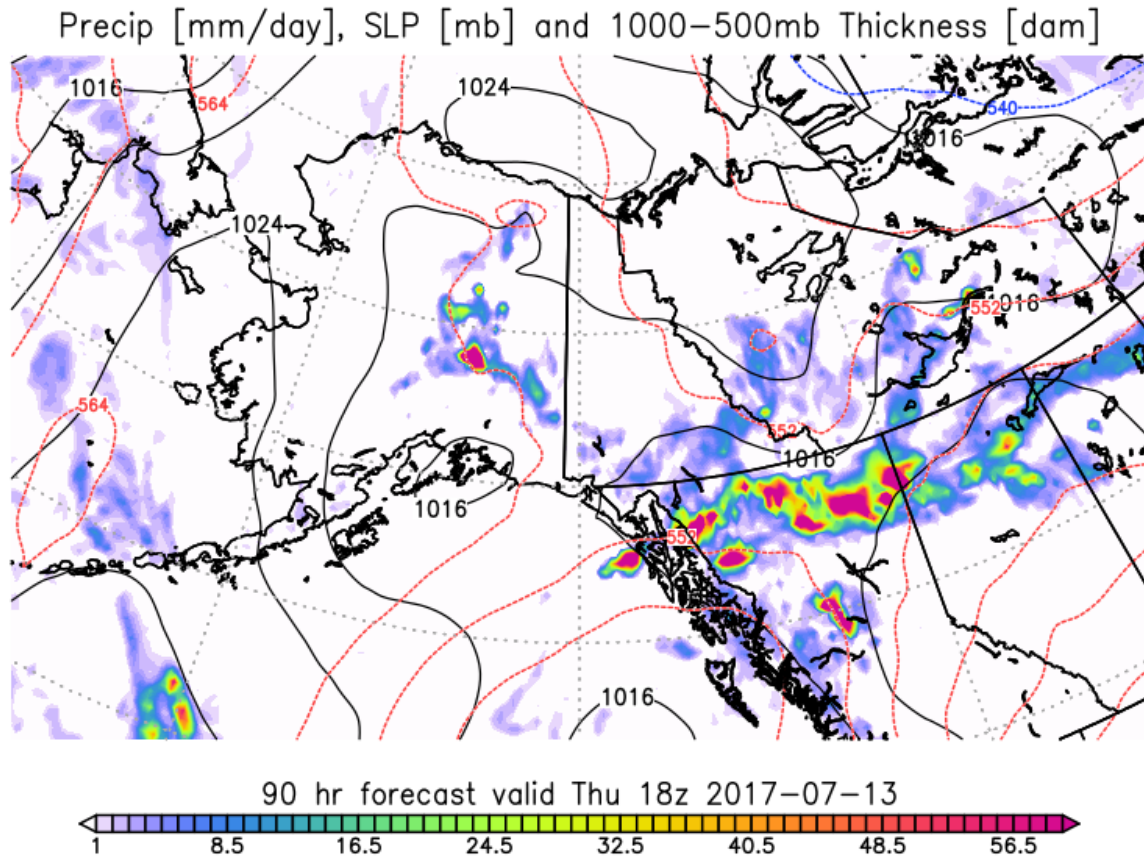
fp.8prec.sfc.066.above_sm.png

NASA/GMAO – GEOS-5 Forecast Initialized on 00z 2017-07-10



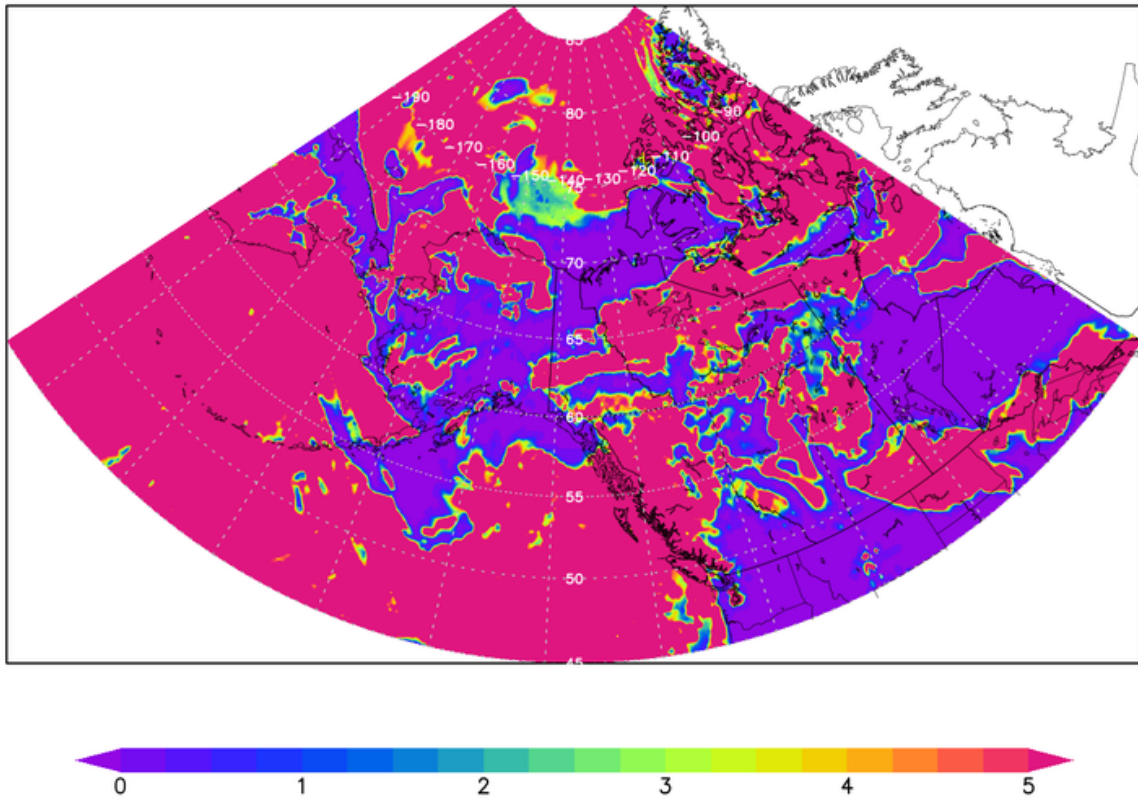
fp.8prec.sfc.090.above_sm.png

NASA/GMAO – GEOS-5 Forecast Initialized on 00z 2017-07-10



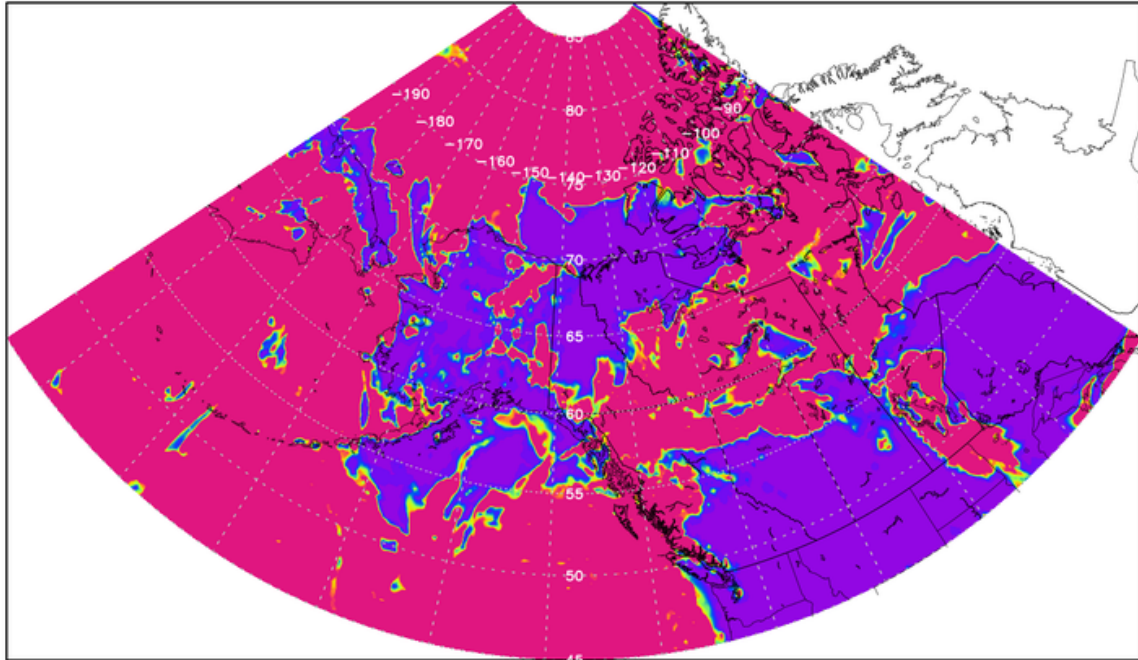
ABOVE_Low_Cloud_Optical_Depth_IT_00z10JUL_VT_18z12JUL.png

GEOS Low Cloud Optical Depth
Initial time 10 JUL. 00z
Valid time 12 JUL. 18z



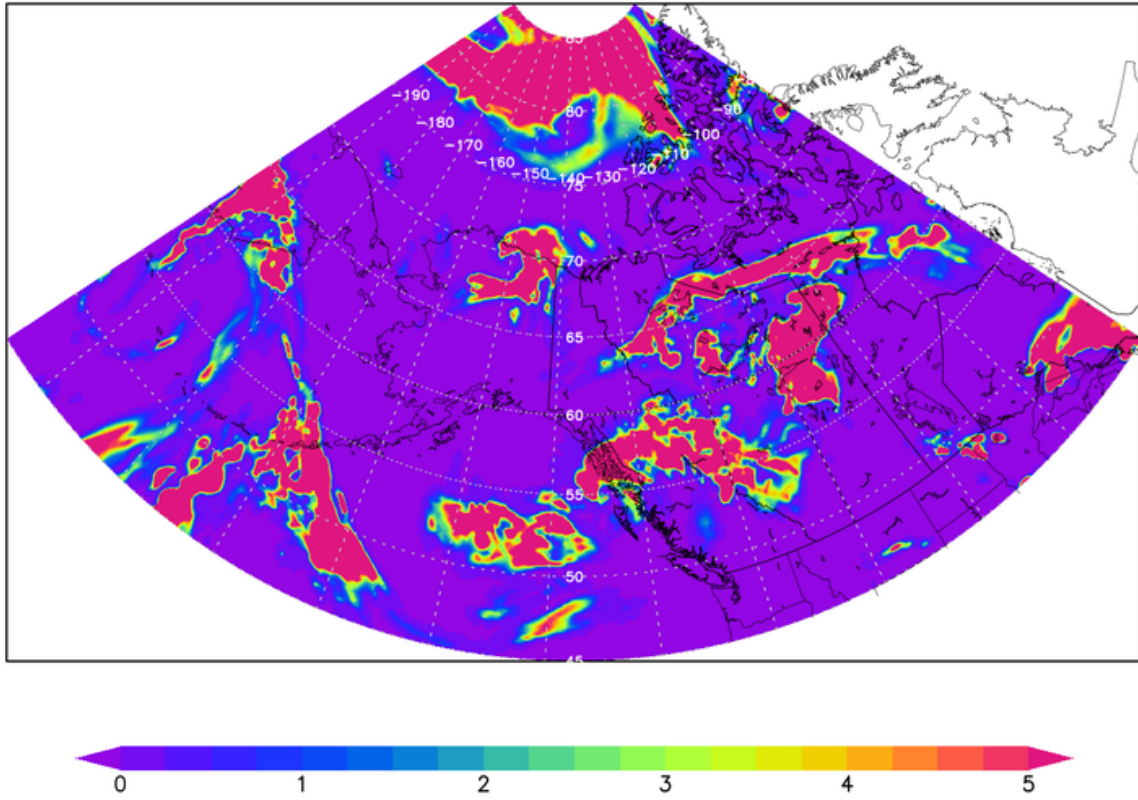
ABOVE_Low_Cloud_Optical_Depth_IT_00z10JUL_VT_18z13JUL.png

GEOS Low Cloud Optical Depth
Initial time 10 JUL. 00z
Valid time 13 JUL. 18z



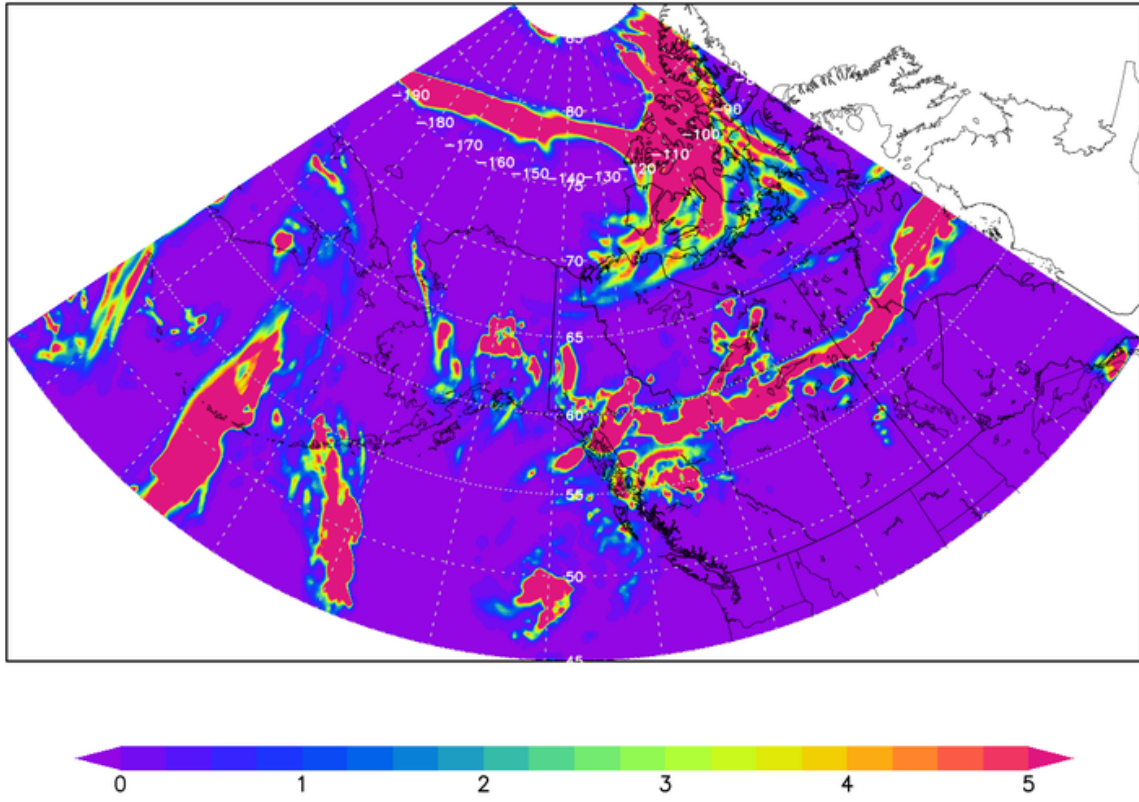
ABOVE_Mid_Cloud_Optical_Depth_IT_00z10JUL_VT_18z12JUL.png

GEOS Mid Cloud Optical Depth
Initial time 10 JUL. 00z
Valid time 12 JUL. 18z



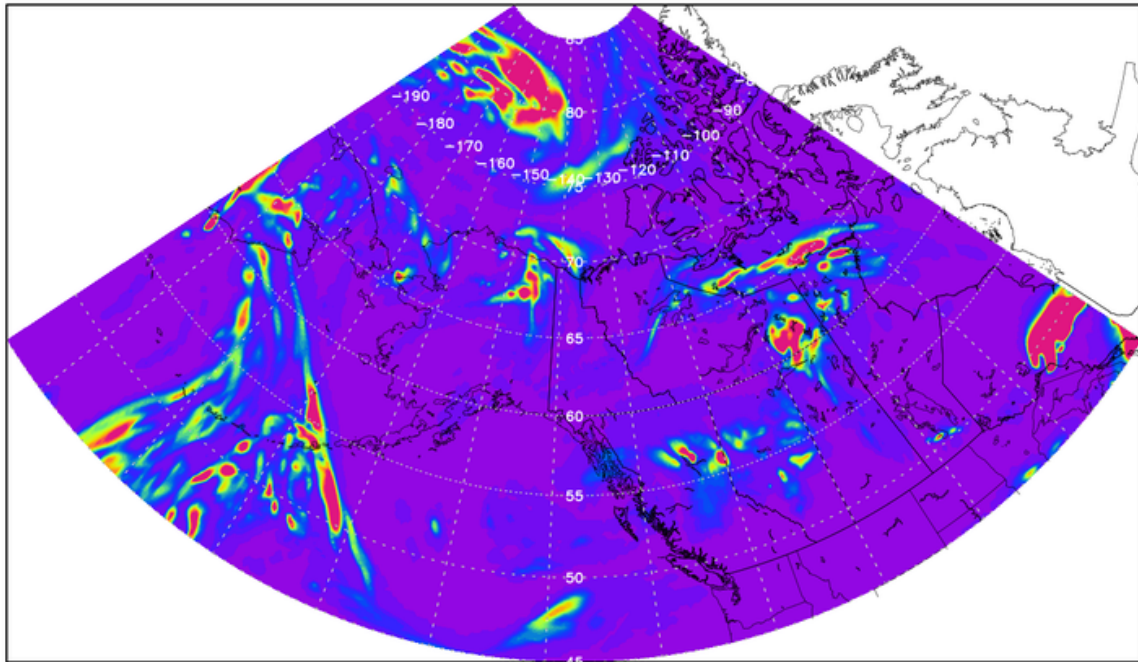
ABOVE_Mid_Cloud_Optical_Depth_IT_00z10JUL_VT_18z13JUL.png

GEOS Mid Cloud Optical Depth
Initial time 10 JUL. 00z
Valid time 13 JUL. 18z



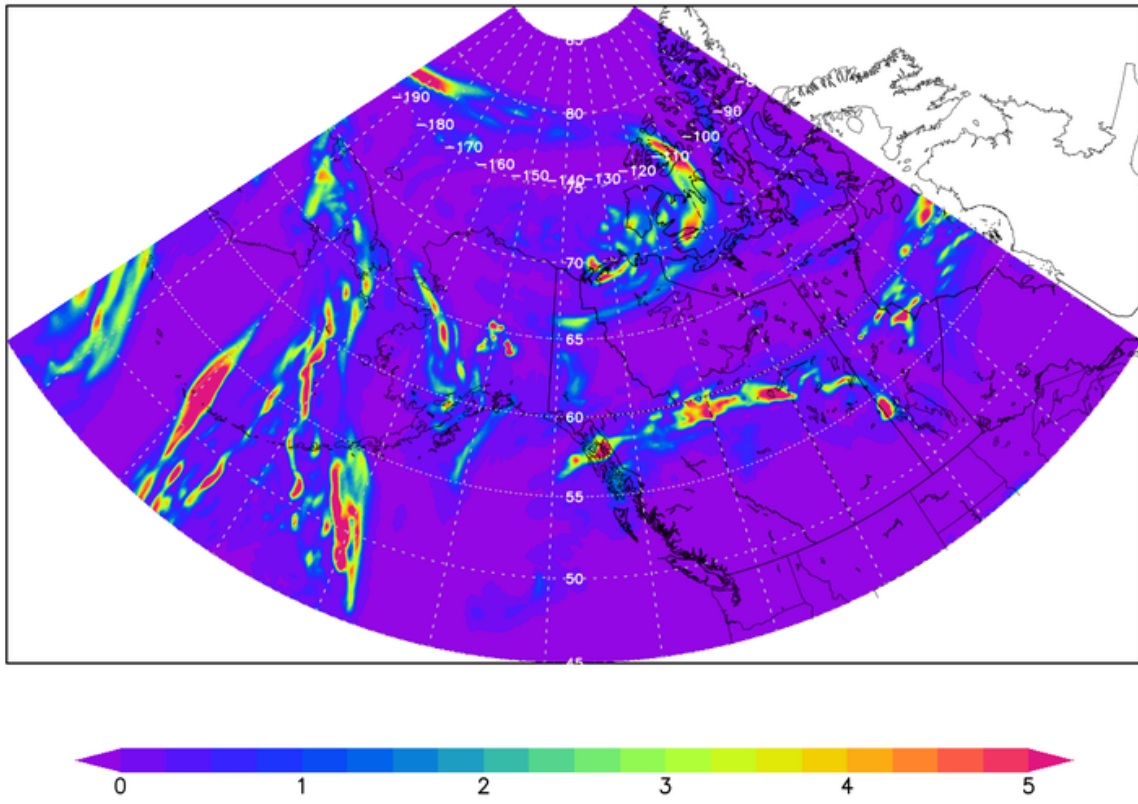
ABOVE_High_Cloud_Optical_Depth_IT_00z10JUL_VT_18z12JUL.png

GEOS High Cloud Optical Depth
Initial time 10 JUL. 00z
Valid time 12 JUL. 18z



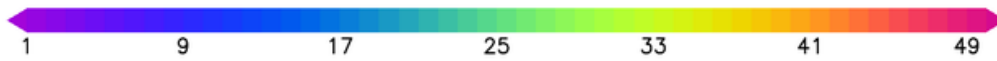
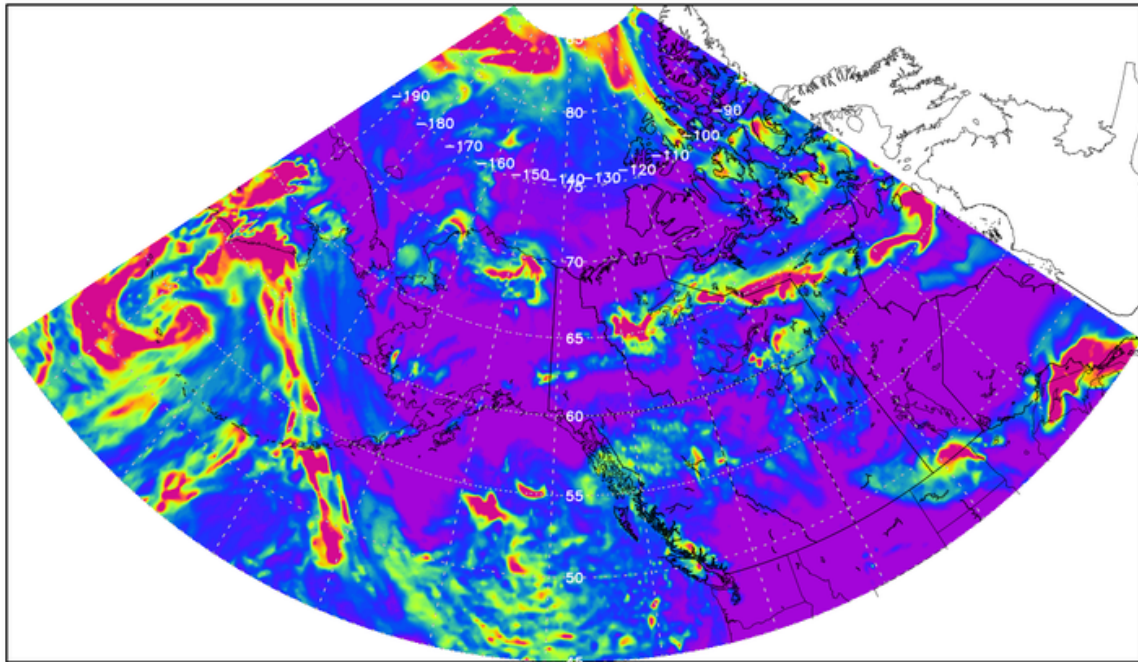
ABOVE_High_Cloud_Optical_Depth_IT_00z10JUL_VT_18z13JUL.png

GEOS High Cloud Optical Depth
Initial time 10 JUL. 00z
Valid time 13 JUL. 18z



ABOVE_Total_Cloud_IT_00z10JUL_VT_18z12JUL.png

GEOS Total Cloud Optical Depth
Initial time 10 JUL. 00z
Valid time 12 JUL. 18z



ABOVE_Total_Cloud_IT_00z10JUL_VT_18z13JUL.png

GEOS Total Cloud Optical Depth
Initial time 10 JUL. 00z
Valid time 13 JUL. 18z

